

DOHA THERMAL ENERGY STORAGE PRODUCTION PLANT



How much energy does a CSP plant use a year? The addition of 8 h of storage increases the utilisation factor of the CSP plant in the country from about 25% to over 40% annually. The optimum CSP plant capacities based on the specified energy needs are 4198 MW and a 70 GWh thermal storage unit would help the output of this technology. Fig. 11.



Why is thermal energy storage important? Thermal energy storage (TES) can help to integrate high shares of renewable energy in power generation, industry and buildings. This outlook identifies priorities for research and development. Transforming the global energy system in line with global climate and sustainability goals calls for rapid uptake of renewables for all kinds of energy use.



What is thermal energy storage (TES)? Each outlook identifies technology-, industry- and policy-related challenges and assesses the potential breakthroughs needed to accelerate the uptake. Thermal energy storage (TES) can help to integrate high shares of renewable energy in power generation, industry and buildings.



What is a BYD containerized energy storage system? The BYD containerized Energy Storage System is rated at 250 kW (300 KVA) and 500 KWh with nominal output voltage of 415 VAC at a frequency of 50Hz and is outfitted with environmental controls, inverters and transformers, all self-contained, in a 40 foot shipping container to provide stable power supply.



The International Renewable Energy Agency predicts that with current national policies, targets and energy plans, global renewable energy shares are expected to reach 36% and 3400 GWh of stationary energy storage by 2050. However, IRENA Energy Transformation Scenario forecasts that these targets should be at 61% and 9000 GWh to achieve net zero ???

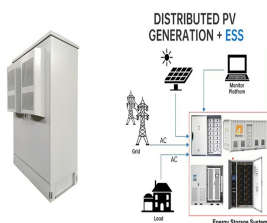
DOHA THERMAL ENERGY STORAGE PRODUCTION PLANT



Thermal energy storage (TES) is the most suitable solution found to improve the concentrating solar power (CSP) plant's dispatchability. Molten salts used as sensible heat storage (SHS) are the most widespread TES medium. However, novel and promising TES materials can be implemented into CSP plants within different configurations, minimizing the ???



The energy system in the EU requires today as well as towards 2030 to 2050 significant amounts of thermal power plants in combination with the continuously increasing share of Renewables Energy Sources (RES) to assure the grid stability and to secure electricity supply as well as to provide heat. The operation of the conventional fleet should be harmonised with ???



Solar thermal power plants for electricity production include, at least, two main systems: the solar field and the power block. Regarding this last one, the particular thermodynamic cycle layout and the working fluid ???



Historical trends and dominance of renewable energy sources (1965-2021), based on data from [18]: (a) progression of generated energy by different renewable energy sources; (b) relative dominance



Therefore, the coal is transported via trains to the fuel storage space. The size of coal is very large that is not suitable for the boiler. So, the coal is crushed in small pieces via crusher and fed to the boiler. In a thermal power plant, the heat energy is lost in the condenser. There are two types of efficiency in thermal power plants.

DOHA THERMAL ENERGY STORAGE PRODUCTION PLANT



Pumped Storage Hydro (PSH) o Thermal Energy Storage Super Critical CO₂ Energy Storage (SC-CCES) Molten Salt Liquid Air Storage o Chemical Energy Storage Hydrogen Ammonia Methanol 2) Each technology was evaluated, focusing on the following aspects: o Key components and operating characteristics o Key benefits and limitations of the technology

Commercial and Industrial ESS

Air Cooling / Liquid Cooling
 • Energy Density Booster
 • Renewable Energy Integration
 • Modular Design for Flexible Expansion



Thermal energy storage has the potential to be an essential brick in building a fossil-free energy system. Approximately half of the world's energy consumption is in the form of heat, from heating the built environment to a range of industrial processes and more. By combining thermal energy storage with renewable electricity production, many applications that currently use fossil fuels ???



The introduction of thermal energy storage (TES) to CSP plants could balance the supply and demand of energy by minimizing the adverse effects of solar energy intermittency . Increased use of irregular RES has an impact on grid stability. Pandey, A., Pandey, P., & Tumuluru, J. S. (2022). Solar energy production in India and commonly used



The energy generated at present through fossil fuel is the major cause of environmental degradation and global warming. It is expected that the temperature can rise to about 1.5 °C of the preindustrial level by 2030???2052 if the current trends of the emission continue (Singh et al. 2021). Tackling with the adverse impact of environmental deterioration is the main ???



The concept of thermal energy storage (TES) can be traced back to early 19th century, with the invention of the ice box to prevent butter from melting (Thomas Moore, An Essay on the Most Eligible Construction of IceHouses-, Baltimore: Bonsal and ???

DOHA THERMAL ENERGY STORAGE PRODUCTION PLANT



Flow diagram of a CHP plant: a) Energy, b) Exergy. Flow diagram of integrated system with 20% steam from boiler and 80% steam from Molten salt storage: c) Energy, d) Exergy. Download: Download high-res image (578KB) Download: Download full-size image; Fig. 6. The hourly power production by source in Sweden, for the year 2017.



The share of renewable energy in worldwide electricity production has substantially grown over the past few decades and is hopeful to further enhance in the future [1], [2] accordance with the prediction of the International Energy Agency, renewable energy will account for 95% of the world's new electric capacity by 2050, of which newly installed ???



The Vaskiluoto thermal energy storage facility is one of the largest energy reserves in use in Finland. The TES facility has been in operation since 2020. The facility can be used into the future regardless of the production mode, making it an excellent example of sector coupling. The thermal storage caverns have a capacity of 150,000 m³ and



Hydrogen has tremendous potential of becoming a critical vector in low-carbon energy transitions [1]. Solar-driven hydrogen production has been attracting upsurging attention due to its low-carbon nature for a sustainable energy future and tremendous potential for both large-scale solar energy storage and versatile applications [2], [3], [4]. Solar photovoltaic-driven ???



Photo courtesy of CB&I Storage Tank Solutions LLC. Thermal Energy Storage Overview. Thermal energy storage (TES) technologies heat or cool a storage medium and, when needed, deliver the stored thermal energy to meet heating or cooling needs. TES systems are used in commercial buildings, industrial processes, and district energy installations to

DOHA THERMAL ENERGY STORAGE PRODUCTION PLANT



To effectively utilize waste heat from various industrial production techniques, dynamic thermal management using PCM thermal a large amount of heat can be recovered from the exhaust gases evolved in the electric arc furnace of a steelmaking plant. A thermal energy storage system based on a dual-media packed bed TES system is adopted for



Concentrating solar power (CSP) is a high-potential renewable energy source that can leverage various thermal applications. CSP plant development has therefore become a global trend. However, the designing of a CSP plant for a given solar resource condition and financial situation is still a work in progress. This study aims to develop a mathematical model to analyze the ???



In the FLEXI- TES joint project, the flexibilization of coal-fired steam power plants by integrating thermal energy storage (TES) into the power plant process is being investigated.



Solar thermal power plants for electricity production include, at least, two main systems: the solar field and the power block. Regarding this last one, the particular thermodynamic cycle layout and the working fluid employed, have a decisive influence in the plant performance. STPPs usually include a third important component, a thermal



To address the growing problem of pollution and global warming, it is necessary to steer the development of innovative technologies towards systems with minimal carbon dioxide production. Thermal storage plays a crucial role in solar systems as it bridges the gap between resource availability and energy demand, thereby enhancing the economic viability of the ???

DOHA THERMAL ENERGY STORAGE PRODUCTION PLANT



Thermal energy storage technologies allow us to temporarily reserve energy produced in the form of heat or cold for use at a different time. is sometimes referred to as Cryogenic Energy Storage (CES). The word "cryogenic" refers to the production of very low temperatures. energy storage, with 100s of MWs output. LAES systems can use



One-way to continuously produce energy or to produce the required amount of electricity from renewable energy systems is using energy storage. Storage systems like battery, pumped storage, and thermal storage are widely employed for storing energy. Batteries are used mostly for storing energy on small scales.



Solar energy is the most viable and abundant renewable energy source. Its intermittent nature and mismatch between source availability and energy demand, however, are critical issues in its deployment and market penetrability. This problem can be addressed by storing surplus energy during peak sun hours to be used during nighttime for continuous ???



Thermal energy storage allows to keep the steam cycle warm during standby situations and avoids the use of fuels for that purpose. there are small but valuable contributions from hydropower imports and geothermal plants. Hydrogen production capacity increases from 5 GW in 2030 to 25 GW in 2060 and is regulated proportionally to the



Even though each thermal energy source has its specific context, TES is a critical function that enables energy conservation across all main thermal energy sources [5] Europe, it has been predicted that over 1.4×10^{15} Wh/year can be stored, and 4×10^{11} kg of CO₂ releases are prevented in buildings and manufacturing areas by extensive usage of heat and ???

DOHA THERMAL ENERGY STORAGE PRODUCTION PLANT



E2S Power, a joint venture between Swiss SS& A Power Group and German company WIK, presented the innovative thermal energy storage TWEST TM, which provides a solution for intermittent production from renewable energy sources and conversion of thermal power plants to CO₂ free operation. The E2S Power thermal energy storage technology has been validated in ???



Thermal energy storage (TES) is a critical enabler for the large-scale deployment of renewable energy and transition to a decarbonized building stock and energy system by 2050. Advances in thermal energy storage would lead to increased energy savings, higher performing and more affordable heat pumps, flexibility for shedding and shifting



Solar thermal energy, especially concentrated solar power (CSP), represents an increasingly attractive renewable energy source. However, one of the key factors that determine the development of this technology is the integration of efficient and cost effective thermal energy storage (TES) systems, so as to overcome CSP's intermittent character and to be more ???



The prediction of the techno-economic performances of future concentrated solar power (CSP) solar tower (ST) with thermal energy storage (TES) plants is challenging. Nevertheless, this information



Doha West Power Plant is a 2,400MW oil fired power project. It is located in Al Asimah, Kuwait. According to GlobalData, who tracks and profiles over 170,000 power plants worldwide, the project is currently active.