

DOMESTIC PHOTOVOLTAIC PANEL MODELS



Free UK Delivery* 25 Year Warranty** Plug-In Solar 440W (1 Panel) DIY Solar Power Kit with Roof Mount for Metal/Wooden Roofs (Enphase Micro-Inverter) Metal/Wood Roof Mount Kits, Plug In Solar, Self Install DIY Solar Kits. £505.00 (ex. VAT) £606.00 (inc. VAT) Add to Cart;



Demographic of the nation make India as a tropical country with good intensity radiation and excellent solar energy potential. In a year the average solar radiation fall is 4000 kWh/m² with 300 sunny days (Kirmani et al., 2015). The prime minister of India revised the goal of 20 GW solar energy into 100 GW aspiring mission of solar energy installation by 2022.



Domestic Solar PV Scheme The Domestic Solar PV Scheme operates under the Microgeneration Support Scheme (MSS) and provides a grant towards the purchase and installation of a solar PV system for homeowners. This takes the form of a once-off payment to a homeowner based on the installation of products which meet the requirements of the Scheme.

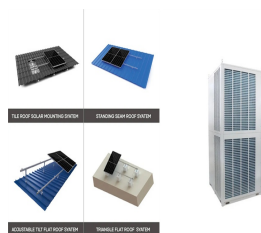


We compared 30+ of the top solar panel manufacturers operating in the UK to determine the top 5 best solar panel models available today. We compared manufacturer data, independent reviews, and third party accreditations for all 322 available solar panel models on the market. Best solar panel companies; Manufacturer: Best for: Price per



The best solar panel in 2024 is SunPower Maxeon 6.; The best solar panel in terms of warranty is the Project Solar Evolution Titan 445, offering a lifetime warranty of 99.9 years.; The best solar panel for the average 3-bedroom home.

DOMESTIC PHOTOVOLTAIC PANEL MODELS



Solar PV (photovoltaic) panels convert sunlight into electricity. The free power generated from your solar panel array can then be used to power your home or business, store the surplus energy not being used in the building by using battery storage systems or send the power back to the grid for others to use! A generation meter is installed to monitor the volume of electricity generated ???



Different Size of Domestic Solar Panels Systems . Below we have detailed some of the most common solar panel installations in the UK for domestic properties. There are considerable weight differences depending on the exact brand and model of solar panel you buy, but on average they range from 16kg to 24kg.



What are hybrid solar panels? A hybrid solar panel is a combination panel that can produce electricity and heat at the same time. They're also known as solar PV-T, or solar photovoltaic-thermal panels, meaning they take both energy and heat from the sun.. What that means for us, is that we can use one panel to generate electricity as well as heat and hot water.



Our picks for the best home solar panels in 2024. According to our research, the best solar panels available today are: Best overall solar panels: Qcells. Best solar panel warranty: Silfab Solar Best value solar panel: JA Solar Best solar panel performance: Jinko Solar Best availability: Canadian Solar You can learn more about our picks for the best solar panels in our video from solar ???



3 Description of your Solar PV system Figure 1 ??? Diagram showing typical components of a solar PV system The main components of a solar photovoltaic (PV) system are: Solar PV panels ??? convert sunlight into electricity. Inverter ??? this might be fitted in the loft and converts the electricity from the panels into the form of electricity which is used in the home.

DOMESTIC PHOTOVOLTAIC PANEL MODELS



Model: PV410-M10: Marley Product Code: MAPV410-M10: Peak Power: 410Wp: Efficiency: 21.5%: No. of cells: 54x2: A Perfect solution for domestic properties with smaller roof areas, or obstacles in the roof such as dormers or roof ???



Solar panel sizes in the UK are generally between 250W and 450W for domestic installations, with physical dimensions typically measuring and height. While there isn't usually a large variety or a standard dimension range, we've looked at popular solar panel models and found the standard solar panel dimensions for both residential and



We review the best grid-connect solar inverters from the worlds leading manufacturers Fronius, SMA, SolarEdge, Fimer, Sungrow, Huawei, Goodwe and many more to decide who offers the highest quality and most ???



The average domestic solar panel system in the UK is around 3.5 kilowatt peak (kWp). Pitch. This is the angle at which your roof faces the sun. According to the Energy Saving Trust, the best angle for solar panels in the UK is somewhere between 30° and 40°. According to experts, some of the latest models of solar panels that are being



This dataset contains voltage, current, power, energy, and weather data from low-voltage substations and domestic premises with high uptake of solar photovoltaic (PV) embedded generation. Data collected as part of the project run by UK Power Networks.



The 24% efficiency rate of AIKO's powerful 72-cell N-Type ABC White Hole Series panel is a new best for domestic solar panels, which struggled to get above 20% a few years ago. first to the top 48 models and then to the nine best: Power ??? Measured in watts (W), power refers to a solar

DOMESTIC PHOTOVOLTAIC PANEL MODELS

panel's peak energy production in standard test

DOMESTIC PHOTOVOLTAIC PANEL MODELS



This is now a common technology deployed in most newer solar panel models. They are similar in size and weight to their full-cell equivalents. Solar panel output or "wattage" The ability to capture the sun's rays and ???



The type of solar panel you need depends on the type of system you want to install. For a traditional rooftop solar panel system, you'll usually want monocrystalline panels due to their high efficiency. If you have a big roof with a lot of space, you might choose polycrystalline panels to save money upfront. Want to DIY a portable solar setup on an RV or boat?



As specialists in domestic and residential solar panel systems we provide a broad range of solutions to generate optimal returns. Request a survey today. Email: info@geogreenpower Call: +44 (0) 800 988 3188 Call: +44 (0) 1509 880 199



Solar panel system sizes are normally expressed in kilowatt peaks (kWp), which is the maximum output of the system. Household solar panel systems are typically up to 4kWp. We spoke to more than 2,000 solar panel owners about ???



Then, divide that system size by the output of each solar panel model to figure out how many panels you'll need. Choosing a larger solar array can help you maximise your energy offset and savings over time, especially ???



The average temperature coefficient for a solar panel is $-0.32\%/^{\circ}\text{C}$, which means for every degree above 25°C , a solar panel's output falls by a miniscule 0.32%. However, even if your solar panels were to reach the dizzying heights of 50°C , they would still be operating at roughly 92% of

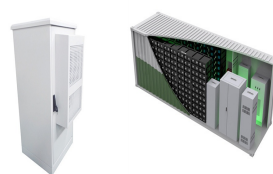
DOMESTIC PHOTOVOLTAIC PANEL MODELS

their original capacity - not a very significant loss at all.

DOMESTIC PHOTOVOLTAIC PANEL MODELS



Panasonic. Best for roofs with tight spaces. Panasonic is most commonly known in the U.S. as a TV and small appliance manufacturer, but the Japanese company is also a global leader in solar panels. In 2021, Panasonic ???



merical model and used CFD to simulate heat and mass transfer of PCM at the back of photovoltaic panels. Their results showed that adding PCM at the back of panels can maintain the operating temperature below 40°C. Active cooling is effective to cool PV panels. However, with the additional power consumption involved, the active cooling



Commercial solar panel Solar panel installations can enhance your home's energy efficiency. Many countries have energy rating systems that assess the overall energy efficiency of a property. By generating your electricity through solar panels, your home's energy rating is likely to improve, making it more appealing to potential buyers or renters, and helping you comply with ???



A nice feature we have found when using this software is the ability to directly compare the performance of different solar panel types, makes and models directly against the details of the solar PV installation site. Most solar PV manufacturers panels and modules are already listed in the SMA Sunny Design database, you also have the option to



Materials Needed for Building a Photovoltaic Solar Panel. Of course, you can only build your own solar panel system with the appropriate equipment. Don't worry. Everything you need is listed in this section. Solar Cells. The show's star is solar cells, so you must prioritize buying them before you build a solar panel system.