

DON T STARVE HAMLET ENERGY STORAGE BLOCK



The Ancient Pig Ruins are found in Hamlet worlds and can be located in any biome except the Pig City. The Ruins often contain valuable loot, such as gems, gold, and relics. However, they can also be full of traps. This guide will teach you how to successfully explore the ruins. Before you even begin to explore the ruins, you will need adequate tools to do so. Firstly, source some ???



The Maxameleon greeting Wilson as he lands in the world of Don't Starve: Hamlet. Welcome to your brand-new, unique Hamlet world. Each world map is randomly generated, but you will always spawn first hour of the day in the Rainforest biome, in the first day of temperate season, and surrounded by the remains of what seems to be a crashed air balloon. A machete will be lying ???



Pig Shops are naturally spawning Structures exclusive to the Hamlet DLC, where the player can use Oincs to buy items. Each shop specializes in a different category of goods. Some Pig Shops can only be found in Swinesbury Pig City on the first island, others only in the Palace City on the second island. If the player obtains the Key to the City, all Pig Shops becomes craftable in the ???



The Key to the City and Executive Hammer are exclusive items that can only be acquired through giving royal trinkets to the Pig Queen. The Key unlocks the City Planning Tab, a high-end crafting tab similar to the ancient or volcanic tab. The executive hammer can permanently destroy structures from the city planning tab and return half the resources used to build it. This guide ???



The Salt Box is a craftable Structure exclusive to Don't Starve Together, introduced in Return of Them. It is found in the Structures Filter, Storage Solutions Filter and Cooking Filter, requiring ten Salt Crystals, a Blue Gem and a Cut Stone to craft, and an Alchemy Engine to prototype. Similar to the Ice Box, the Salt Box can be used to store and preserve up to 9 stacks

DON T STARVE HAMLET ENERGY STORAGE BLOCK



of Food Items. ???

DON T STARVE HAMLET ENERGY STORAGE BLOCK



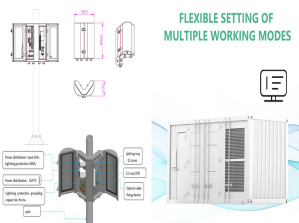
Wormwood's main perk is access to the exclusive Green Thumb Tab. This gives him the ability to craft 5 unique items. These items are: Living Log ??? Used in making Poison balm, Bramble Husk, and Bramble Trap. Costs 20 to craft. Also used in a number of recipes that aren't specific to Wormwood. Poison Balm ??? Cures Poison. Bramble Husk ??? When worn: provides protection, ???



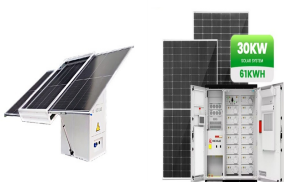
The Cork Barrel is a craftable Structure exclusive to the Hamlet DLC. It has 4 storage slots, and cannot be opened by Pogs. They also cannot be opened by Splumonkeys and Krampus cannot break them or steal items from them, although Slurtles will still pull Rocks out of them and Bearer can still break them to search for food. According to Willow's quote, this item is not flammable, ???



Don't Starve: Hamlet????????????????<<Don't Starve????????????????3?????(R)?????????????-?? 1/4
 ?????????????????????????????????2017913??<<???DLC?????????????(R)?
 ?????????????????????????????????(R)????????????????????????????
 ??????????????????? 3/4 ?????????? Don't Starve:
 Hamlet????????????????<<?? 1/2
 ?????????(R)??,????????????<<??(R)??<<????(R)??????????



This page lists Wagstaff's Quotes which are spoken when the player examines an in-game item or object. The player can alt-click items and objects to examine them. Due to the amount of text catalogued, this page only contains Wagstaff's quotes for items found in Hamlet. For items exclusive to other expansions, see the pages listed above.



The Piko is a neutral Mob exclusive to the Don't Starve: Hamlet DLC. There is also a rarer orange variant called the Orange Piko. Both Piko and Orange Piko spawn from Tea Trees, and seem more likely to spawn near clumps of several trees growing close together. Each Piko has a "home tree". They will only climb this tree, unless they are caught in a trap and

DON T STARVE HAMLET ENERGY STORAGE BLOCK

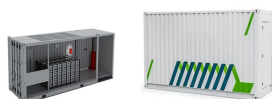


released. They will ???

DON T STARVE HAMLET ENERGY STORAGE BLOCK



A Sinkhole is the entrance to a Cave and can be found randomly in the world. In, each Sinkhole leads to a new Cave or Ruin, while in, there is just one "caves" and the ruins are an area within it. The cave-side of a sinkhole is a staircase or cave-exit ("cave_exit" in the code). When first discovered, the Sinkhole will be a Plugged Sinkhole and is covered with a jagged rubble ???



The Swinesbury City Hall is a naturally spawning Pig Shop Structure exclusive to the Hamlet DLC. It is found in Swinesbury Pig City and sells a variety of permits and contracts to the player. Upon entering the Swinesbury City Hall, the player will find a variety of Items that are sold in exchange for Oincs. Additionally, Mayor Truffleston wanders around the room. The following items can ???



The Key to the City and Executive Hammer are exclusive items that can only be acquired through giving royal trinkets to the Pig Queen. The Key unlocks the City Planning Tab, a high-end crafting tab similar to the ancient or volcanic tab. The executive hammer can permanently destroy structures from the city planning tab and return half the resources used to build it. This guide ???



Hedges are shaped bushes found in the Pig Villages in the Hamlet DLC. They have two forms, cut and grown. Whilst cut, the Hedges cannot be interacted with, but when grown they can be cut either by using a Razor which will result in 1 Clipping or by using Shears which will result in 2 Clippings. Hedges will have a 3% chance to grow every 0.5-1.5 days.



Judgement: Banker Pig. Do not use him unless desperate for Oincs. You don't find many gems in the early game until you find the Pinnacle with the BFB, But you'll probably get one Blue gem, one Red gem, and one Purple gem. You can't sell him the Purple gem and you should probably save the Red and Blue gems for the Smelter and Sprinkler, respectively. You'd normally have quite ???

DON T STARVE HAMLET ENERGY STORAGE BLOCK



Pogs are neutral Mobs exclusive to the Hamlet DLC. These curious and hungry critters tend to spawn in small herds in the Wild Plains Biomes. A Pog drops a single Morsel when killed. They are considered innocent creatures and killing one adds 2 points to the player's Naughtiness level, which can cause Krampus to appear. They will eat any Food Item left on the ground (including ???)



The Radish is a Vegetable Food Item exclusive to the Hamlet DLC. It can most often be found growing naturally in the ground, but these won't respawn after being picked. Radish can also be Farmed by planting Seeds in a Farm. When eaten raw, Radish restore 12.5 Hunger and 1 Health. They take 15 days to spoil and can be used in a Crock Pot. Radish are required to make Spicy ???



The Royal Gallery Key is an item exclusive to the Hamlet DLC. It is given to players from the Pig Queen in exchange for the Regal Scepter, Royal Crown, The Blue Sow or The Jeweled Truffle. It is used to unlock one of the items in the Royal Gallery.



"The Sty" Oddities Emporium is a naturally spawning Pig Shop Structure exclusive to the Hamlet DLC. It is found in the Palace Pig City and sells a variety of rare Crafting materials to the player. If the player obtains the Key to the City, "The Sty" Oddities Emporium also becomes craftable in the City Planning Tab, using four Boards, three Ball Pein Hammers and four Pig Skins. Upon ???



The Cave Cleft is a naturally spawning Structure exclusive to Hamlet DLC. Within, only a single room is able to be explored unlike Ancient Pig Ruins and Mant Hills. The room is dark with the exception of some light near the exit during Day and Dusk. Upon entering a Cave Cleft, the player will find some structures such as Stalagmites and Unimportant Pillars which can be mined with ???



Don't Starve: Hamlet?????????????<<Don't
Starve????????????????3?????(R)?????????-?? 1/4
????????????????????????????2017913??<???DLC?????????(R)?
?????????????????????????(R)????????????????????
???????????????? 3/4 ????????



Cloth is a Refined Item introduced in the Shipwrecked DLC. It requires a Science Machine to prototype and 3 Bamboo to craft. Cloth can also be occasionally found when Hammering Crates or floating on the water in Ship Graveyards. It is used in many crafting recipes and can be used as Fuel. Cloth is also included in the Hamlet DLC, required to craft Pith Hats and Gas Masks. ???



The Ice Cube is a craftable Dress Item from the Reign of Giants DLC. It requires 2 Electrical Doodads, 4 Rope, and 10 Ice to craft and an Alchemy Engine to prototype. When worn, the Ice Cube grants 240 points of protection from Overheating, and provides a cooling effect of 40%. Additionally, the player's Wetness will increase rapidly up to a maximum of 50 and walking ???



The Fountain of Youth is a naturally-spawning object in the Hamlet DLC. It can be found on an isolated island, reachable only by going through ruins with an artichoke above the entrance. The Fountain can be interacted with to obtain Magic Water, but doing so will spawn the Pugalisk from the nearby Ominous Carving. As long as there are no Magic Waters or Magic Flowers that ???



El Aporkalypse es un evento de Don't Starve Hamlet que ocurre cuando los tres sellos del Calendario de Aporkalypse se alinean. Sin el control del jugador, esto sucede al comienzo del día 61 en un mundo de Hamlet. Durante este evento, el mundo estará constantemente iluminado y teñido de rojo, como resultado de un eclipse solar.

DON T STARVE HAMLET ENERGY STORAGE BLOCK



The Oscillating Fan is a craftable Structure exclusive to the Hamlet DLC. It is found in the Science Tab, requires 2 Alloy, 2 Electrical Doodads and 1 Gear to craft, and an Alchemy Engine to prototype.. While active, the fan prevents the effects of Hay Fever and will dry the player off very rapidly (5 times as fast) even in Fog or Rain as long as the player is within a certain range of ???