

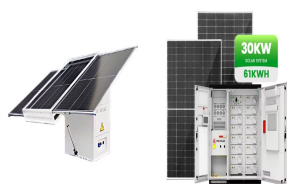
EL SALVADOR SUNSET SOLAR



6 ? Gracias a esta grafica usted podr? conocer, seguir de cerca y analizar los cambios en todos los par?metros, con respecto al tiempo. Usted sabr? la hora del amanecer y del atardecer en cierta ?poca de a?o, cuantas son las horas de sol diarias en San Salvador y c?mo evolucionan sus d?as (sus horas de luz). El dise?o de esta grafica nos permite analizar todos los datos con ???



Solar noon ??? The moment when the sun appears the highest in the sky, compared to its positions during the rest of the day. Sunset ??? The moment when the top of the sun disc touches the ???



San Miguel, El Salvador - sunrise, sunset, dawn and dusk times for the whole year in a graph, day length and changes in lengths in a table. Basic information, like local time and the location on a world map, are also featured. San Miguel, El Salvador - Solar energy and surface meteorology. Variable I II III IV V VI VII VIII IX X XI XII



The solar day over the course of the year 2024. From bottom to top, the black lines are the previous solar midnight, sunrise, solar noon, sunset, and the next solar midnight. The day, twilights (civil, nautical, and astronomical), and night are ???



May Weather in San Salvador El Salvador. Daily high temperatures decrease by 3°F, from 86°F to 83°F, From bottom to top, the black lines are the previous solar midnight, sunrise, solar noon, sunset, and the next solar midnight. The day, twilights (civil, nautical, and astronomical), and night are indicated by the color bands from yellow

EL SALVADOR SUNSET SOLAR



6 ? Here are today's sunrise and sunset times in San Salvador, El Salvador. You'll also find a sunrise and sunset calendar on this page for specific dates of sunrise/sunset in San Salvador.



March Weather in La Libertad El Salvador. Daily high temperatures are around 91°F, rarely falling below 88°F or exceeding 94°F. From bottom to top, the black lines are the previous solar midnight, sunrise, solar noon, sunset, and the next solar midnight. The day, twilights (civil, nautical, and astronomical), and night are indicated by



February Weather in San Salvador El Salvador. Daily high temperatures are around 86°F, rarely falling below 82°F or exceeding 90°F. From bottom to top, the black lines are the previous solar midnight, sunrise, solar noon, sunset, and the next solar midnight. The day, twilights (civil, nautical, and astronomical), and night are indicated



A wet day is one with at least 0.04 inches of liquid or liquid-equivalent precipitation. The chance of wet days in San Salvador varies significantly throughout the year. The wetter season lasts 5.4 months, from May 13 to October 24, with a greater than 24% chance of a given day being a wet day. The month with the most wet days in San Salvador is September, with an average of 13.8 ???



From bottom to top, the black lines are the previous solar midnight, sunrise, solar noon, sunset, and the next solar midnight. The day, twilights (civil, nautical, and astronomical), and night are indicated by the color bands from yellow to gray. Aeropuerto Internacional El Salvador (MSLP, 30%, 59 mi, west, -328 ft elevation change

EL SALVADOR SUNSET SOLAR



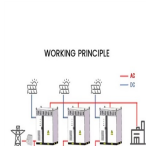
??? Total Solar Eclipse ??? Berl?n, Departamento de Usulut?n, El Salvador. Time/General; Weather . Weather Today/Tomorrow Sunset. The sun is setting. Sunset. Temperature changes. As the Moon covers the Sun, the amount of solar energy decreases. Temperature changes. As the Moon covers the Sun, the amount of solar energy



The solar day over the course of the year 2024. From bottom to top, the black lines are the previous solar midnight, sunrise, solar noon, sunset, and the next solar midnight. The day, twilights (civil, nautical, and astronomical), and night are indicated by ???



October Weather in San Salvador El Salvador. Daily high temperatures are around 83°F, rarely falling below 78°F or exceeding 87°F.. Daily low temperatures are around 67°F, rarely falling below 63°F or exceeding 70°F.. For reference, on March 31, the hottest day of the year, temperatures in San Salvador typically range from 67°F to 87°F, while on January 14, the ???



Fall Weather in San Salvador El Salvador. Daily high temperatures are around 83°F, rarely falling below 78°F or exceeding 88°F. From bottom to top, the black lines are the previous solar midnight, sunrise, solar noon, sunset, and the next solar midnight. The day, twilights (civil, nautical, and astronomical), and night are indicated by



El Primer parque de diversiones de Centroam?rica, frente al mar. % Despu?s de tu sesi?n de surf, tienes una nueva opci?n que debes visitar y se trata de Sunset Park, un parque de diversiones ubicado en el Complejo Tur?stico del Puerto de ???

EL SALVADOR SUNSET SOLAR



Calculation of sunset and sunrise time in San Salvador (San Salvador Department, El Salvador) for december 2024, length of day. Astronomy calculator (schedule, calendar, graph). 12



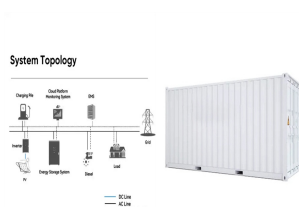
You can display here the sun direction and the sunny hours in San salvador (El salvador. Accurate location-specific knowledge of sun path and climatic conditions is essential for economic decisions about solar collector area, orientation, landscaping, summer shading, and the cost-effective use of solar trackers.



The earliest sunrise of the month in San Salvador is 5:28 AM on June 1 and the latest sunrise is 5 minutes later at 5:32 AM on June 30.. The earliest sunset is 6:21 PM on June 1 and the latest sunset is 7 minutes later at 6:28 PM on June 30.. Daylight saving time is not observed in San Salvador during 2024. For reference, on June 20, the longest day of the year, the Sun rises at ???



Spring Weather in San Salvador El Salvador. Daily high temperatures are around 85°F, rarely falling below 79°F or exceeding 91°F. From bottom to top, the black lines are the previous solar midnight, sunrise, solar noon, sunset, and the next solar midnight. The day, twilights (civil, nautical, and astronomical), and night are indicated by



Calculate sunrise, sunset, solar noon, day length, solar eclipse, shadow length and twilight for San Salvador, El Salvador Online interactive map with sun movement, sun location and get ???

EL SALVADOR SUNSET SOLAR



A wet day is one with at least 0.04 inches of liquid or liquid-equivalent precipitation. The chance of wet days in Santa Tecla varies significantly throughout the year. The wetter season lasts 5.4 months, from May 13 to October 25, with a greater than 25% chance of a given day being a wet day. The month with the most wet days in Santa Tecla is September, with an average of 14.2 ???



Por lo que es esta ruta la que puede llevar desde San Salvador hasta Sunset Park. Como dato extra, adem?s de buses se tiene entendido que tambi?n hay coasters de la ruta 102. Si ese es el caso las coaster (pronunciado en El Salvador como costers) tambi?n son otra opci?n. en carro



While a sunset in the northern USA or central Europe can take almost an hour, in El Salvador, it lasts only an average of 25 minutes. In June, it's about 25 minutes in San Salvador, while in December it's 24 minutes.



The earliest sunrise of the month in San Salvador is 5:33 AM on July 1 and the latest sunrise is 8 minutes later at 5:41 AM on July 31.. The latest sunset is 6:28 PM on July 8 and the earliest sunset is 4 minutes earlier at 6:24 PM on July 31.. Daylight saving time is not observed in San Salvador during 2024. For reference, on June 20, the longest day of the year, the Sun rises at ???



Calculations of sunrise and sunset in San Salvador ??? El Salvador for August 2024. Generic astronomy calculator to calculate times for sunrise, sunset, moonrise, moonset for many cities, with daylight saving time and time zones taken in account.

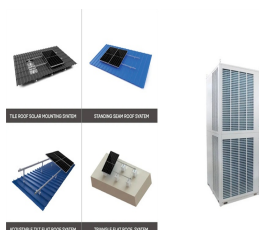
EL SALVADOR SUNSET SOLAR



El Instituto Salvadoreño de Turismo (ISTU) celebrará a lo grande el segundo aniversario de Sunset Park en el Puerto de La Libertad este domingo 25 de agosto del presente año.



Join us on a transformative 5-day retreat on the coastline of El Salvador. Build your redox, harvest photons and become empowered through education while learning directly from leaders in the field of quantum and circadian biology. At Solar Culture, we believe knowledge is your most potent medicine. Our science-backed workshops, led by experts in their



A wet day is one with at least 0.04 inches of liquid or liquid-equivalent precipitation. The chance of wet days in Suchitoto varies significantly throughout the year. The wetter season lasts 5.4 months, from May 13 to October 25, with a greater than 23% chance of a given day being a wet day. The month with the most wet days in Suchitoto is September, with an average of 13.4 days with at ???



The earliest sunrise of the month in San Salvador is 6:20 AM on January 1 and the latest sunrise is 4 minutes later at 6:24 AM on January 23.. The earliest sunset is 5:40 PM on January 1 and the latest sunset is 16 minutes later at 5:56 PM on January 31.. Daylight saving time is not observed in San Salvador during 2024. For reference, on June 20, the longest day of the year, the Sun ???



(Times for San Salvador) Sunrise and sunset in El Salvador do not differ significantly throughout the year. The reason for this is the proximity to the equator. Thus, the sun swings north in the middle of the year and south at the turn of the year, without moving too far away. Sunset Hours of daylight Solar noon; San Miguel: 06:06 am: 05:29