

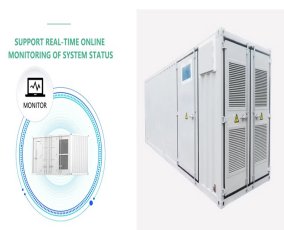
ELECTRIC CARRIER FLYWHEEL ENERGY STORAGE



energy storage, could play a significant role in the transformation of the electrical power system into one that is fully sustainable yet low cost. This article describes the major components that



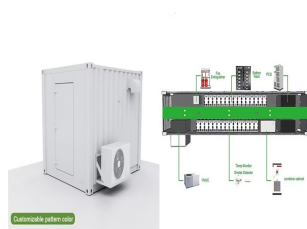
In the field of flywheel energy storage systems, only two bearing concepts have been established to date: 1. Rolling bearings, spindle bearings of the 'High Precision Series' are usually used here.. 2. Active magnetic bearings, usually so-called HTS (high-temperature superconducting) magnetic bearings.. A typical structure consisting of rolling



Three types of MSSs exist, namely, flywheel energy storage (FES), pumped hydro storage (PHS) and compressed air energy storage (CAES). PHS, which is utilized in pumped hydroelectric power plants, is the most popular MSS. In order to generate electricity, high head reserved water is utilized and pumped into an electricity turbine with a



Video Credit: NAVAJO Company on The Pros and Cons of Flywheel Energy Storage. Flywheels are an excellent mechanism of energy storage for a range of reasons, starting with their high efficiency level of 90% and estimated long lifespan. Flywheels can be expected to last upwards of 20 years and cycle more than 20,000 times, which is high in



The flywheel energy storage system (FESS) offers a fast dynamic response, high power and energy densities, high efficiency, good reliability, long lifetime and low maintenance

ELECTRIC CARRIER FLYWHEEL ENERGY STORAGE



Yes, flywheel energy storage can be used in electric vehicles (EVs), particularly for applications requiring rapid energy discharge and regenerative braking. Flywheels can improve vehicle efficiency by capturing and storing braking energy, which can then be used to accelerate the vehicle, reducing overall energy consumption.



Energy storage systems (ESS) provide a means for improving the efficiency of electrical systems when there are imbalances between supply and demand. Additionally, they are a key element for improving the stability and quality of electrical networks. They add flexibility into the electrical system by mitigating the supply intermittency, recently made worse by an ???



Future of Flywheel Energy Storage Keith R. Pullen^{1,*} Professor Keith Pullen obtained his bachelor's and doctorate degrees from Imperial College London with Electric Flywheel Basics The core element of a ???wheel consists of a rotating mass, typically axisym-metric, which stores rotary kinetic en-ergy E according to $E = \frac{1}{2}$



The coupling of drive units of electric and hybrid vehicles with flywheel-based kinetic energy recovery systems is one of the best suitable options to reduce fuel energy usage. It is also a convenient method to reduce greenhouse gas emissions, by the way. $\{\omega\}_{\text{R}}^{(i)}$ are the angular velocities of the planet carrier, sun



Flywheels with the main attributes of high energy efficiency, and high power and energy density, compete with other storage technologies in electrical energy storage applications, as well as in transportation, military ???

ELECTRIC CARRIER FLYWHEEL ENERGY STORAGE



A review of flywheel energy storage technology was made, with a special focus on the progress in automotive applications. We found that there are at least 26 university research groups and 27



??? Flywheel energy storage ??? Energy harvesting 5. Glenn Research Center at Lewis Field Application of Proton Exchange ??? For large hybrid electric or all electric commercial airplane, 4-5X increase in power density of solid oxide fuel cell and specific energy or batteries



Energy storage systems (ESSs) are the technologies that have driven our society to an extent where the management of the electrical network is easily feasible. The balance in supply ???



How Flywheel Energy Storage Systems Work. Flywheel energy storage systems (FESS) employ kinetic energy stored in a rotating mass with very low frictional losses. Electric energy input accelerates the mass to speed via an integrated motor-generator. The energy is discharged by drawing down the kinetic energy using the same motor-generator.



The flywheel in the flywheel energy storage system (FESS) improves the limiting angular velocity of the rotor during operation by rotating to store the kinetic energy from electrical energy, increasing the energy storage capacity of the FESS as much as possible and driving the BEVs" motors to output electrical energy through the reverse

ELECTRIC CARRIER FLYWHEEL ENERGY STORAGE



Energy storage flywheel systems are mechanical devices that typically utilize an electrical machine (motor/generator unit) to convert electrical energy in mechanical energy and vice versa. Energy is stored in a fast-rotating mass known as the flywheel rotor. The rotor is subject to high centripetal forces requiring careful design, analysis, and fabrication to ensure the safe ???



Chemical-hydrogen storage uses hydrogen as an energy carrier to store electricity, for example through electrolysis. Electricity is converted, stored, and then re-converted into the desired end-use form (e.g., electricity, heat, or liquid fuel). Power-storage devices are flywheel energy storage device, electric-magnetic field storage such



The carrier is connected to the drive shaft on which MG2 is mounted either directly or with suitable gearing. The electromechanical battery, Science and Technology Review, pp. 12-20, April 1996 17. Price, G., An assessment of ???



It may be possible to have an energy storage system based on distributed flywheel modules that can simultaneously perform all of these functions, rather than having each function provided separately with batteries or other limited-capability energy storage technologies. IV. ELECTRIC START Flywheel energy storage is being investigated as a direct



Download Citation | Flywheel energy storage system for electric start and an all-electric ship | This paper reports on the investigation and development of flywheel technology as energy storage

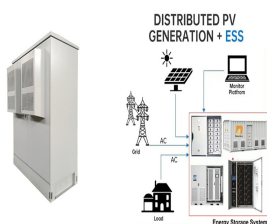
ELECTRIC CARRIER FLYWHEEL ENERGY STORAGE



Energy storage has risen to prominence in the past decade as technologies like renewable energy and electric vehicles have emerged. However, while much of the industry is focused on conventional battery technology as the path forward for energy storage, others are turning to more unique approaches. Flywheel energy storage concept.



A review of energy storage types, applications and recent developments. S. Koochi-Fayegh, M.A. Rosen, in Journal of Energy Storage, 2020 2.4 Flywheel energy storage. Flywheel energy storage, also known as kinetic energy storage, is a form of mechanical energy storage that is a suitable to achieve the smooth operation of machines and to provide high power and energy ???



Flywheel Energy Storage (FES) systems refer to the contemporary rotor-flywheels that are being used across many industries to store mechanical or electrical energy. Instead of using large iron wheels and ball bearings, advanced FES systems have rotors made of specialised high-strength materials suspended over frictionless magnetic bearings



6. Energy Storage Time Response ??? Energy Storage Time Response classification are as follows: Short-term response Energy storage: Technologies with high power density (MW/m³ or MW/kg) and with the ability of short-time responses belongs, being usually applied to improve power quality, to maintain the voltage stability during transient (few ???



Performance analysis of PMSM for high-speed flywheel energy storage systems in electric and hybrid electric vehicles. 2014 IEEE International Electric Vehicle Conference (IEVC) (2014), pp. 1-8, 10.1109/IEVC.2014.7056202. Google Scholar [43] Lu X., Iyer K.L.V., Mukherjee K., Kar N.C.

ELECTRIC CARRIER FLYWHEEL ENERGY STORAGE



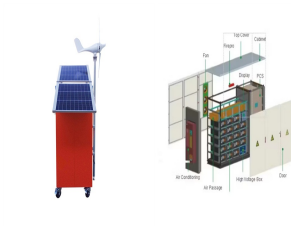
How Flywheel Energy Storage Systems Work. Flywheel energy storage systems (FESS) employ kinetic energy stored in a rotating mass with very low frictional losses. Electric energy input accelerates the mass to speed via an integrated motor-generator. The energy is discharged by drawing down the kinetic energy using the same motor-generator.



1 INTRODUCTION. Pure Electric Vehicles (EVs) are playing a promising role in the current transportation industry paradigm. Current EVs mostly employ lithium-ion batteries as the main energy storage system (ESS), due to their high energy density and specific energy [].However, batteries are vulnerable to high-rate power transients (HPTs) and frequent ???



Flywheel hybrid electric vehicle: FW: Energy storage flywheel: GA: Genetic algorithm: GWO: Grey wolf optimization: HEV: Hybrid electric vehicle: ICE: Internal combustion engine: KERS: Kinetic energy recovery system: MG: Motor/generator: PGS: Planetary gear set: PGS-FHEP: Planetary gear set based flywheel hybrid electric powertrain: PHEVs: Plug



When acting as motor, electric energy supplied to the stator winding is converted to torque and applied to the rotor, causing it to spin faster and gain kinetic energy. In generator mode kinetic energy stored in the rotor applies a torque, which is converted to electric energy. Fig. 1 shows the basic layout of a flywheel energy storage system



Flywheel energy storage systems operate by storing energy mechanically in a rotating flywheel. The generating motor is used to rotate the flywheel and to generate electricity from flywheel rotation.

ELECTRIC CARRIER FLYWHEEL ENERGY STORAGE



Energy storage technology is becoming indispensable in the energy and power sector. The flywheel energy storage system (FESS) offers a fast dynamic response, high power and energy densities, high



The carrier is connected to the drive shaft on which MG2 is mounted either directly or with suitable gearing. The electromechanical battery, Science and Technology Review, pp. 12-20, April 1996 17. Price, G., An assessment of flywheel energy storage for electric vehicle, PhD Thesis, University of Sussex, 1980 18. Brockbank, C. and Greenwood