

ELECTRIC FLYWHEEL ENERGY STORAGE PROJECT



Pic Credit: Energy Storage News A Global Milestone. This project sets a new benchmark in energy storage. Previously, the largest flywheel energy storage system was the Beacon Power flywheel station in Stephentown, New York, with a capacity of 20 MW. Now, with Dinglun's 30 MW capacity, China has taken the lead in this sector.. Flywheel storage ???



This review presents a detailed summary of the latest technologies used in flywheel energy storage systems (FESS). This paper covers the types of technologies and systems employed within FESS, the range of materials used in the production of FESS, and the reasons for the use of these materials. Furthermore, this paper provides an overview of the ???



IEEE Aerospace and Electronics Systems Magazine, 1998;13:13???6. A general review of flywheel technology. Flywheel energy and power storage systems by Bjørn Bolund, Hans Bernhoff, and Mats Leijon. Renewable and Sustainable Energy Reviews, 11 (2007), 235???258. Considers how flywheels can be used for electricity storage. Historical interest



Flywheel. 20. secs - mins. 20,000 ??? 100,000. 20 ??? 80. ???flow batteries make up less than 5 percent of the battery market???flow batteries have been used in multiple energy storage projects that require longer energy storage durations. Flow batteries have relatively low energy densities and have long life cycles, which makes them well

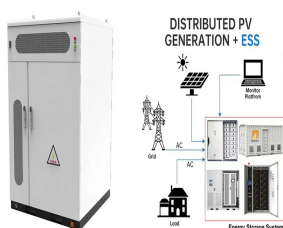


Electrical Energy Storage (EES) refers to systems that store electricity in a form that can be converted back into electrical energy when needed. 1 Batteries are one of the most common forms of electrical energy storage. The first battery???called Volta's cell???was developed in 1800. 2 The first U.S. large-scale energy storage facility was the Rocky River Pumped Storage plant in ???

ELECTRIC FLYWHEEL ENERGY STORAGE PROJECT



With the rise of new energy power generation, various energy storage methods have emerged, such as lithium battery energy storage, flywheel energy storage (FESS), supercapacitor, superconducting magnetic energy storage, etc. FESS has attracted worldwide attention due to its advantages of high energy storage density, fast charging and discharging ???



Finding efficient and satisfactory energy storage systems (ESSs) is one of the main concerns in the industry. Flywheel energy storage system (FESS) is one of the most satisfactory energy storage which has lots of advantages such as high efficiency, long lifetime, scalability, high power density, fast dynamic, deep charging, and discharging capability. The ???



The installation of the 25 KWH flywheel system is the first ever kinetic energy storage system integrated into the electrical grid in Hawaii and is also the world's first commercially available, four-hour flywheel energy storage system. The flywheel and related equipment have no emissions and require no storage or disposal of hazardous



Flywheel Energy Storage Systems (FESS) work by storing energy in the form of kinetic energy within a rotating mass, known as a flywheel. Here's the working principle explained in simple way, Energy Storage: The system features a flywheel made from a carbon fiber composite, which is both durable and capable of storing a lot of energy.



An overview of system components for a flywheel energy storage system. Fig. 2. A typical flywheel energy storage system [11], which includes a flywheel/rotor, an electric machine, bearings, and power electronics. Fig. 3. The Beacon Power Flywheel [12], which includes a composite rotor and an electric machine, is designed for frequency

ELECTRIC FLYWHEEL ENERGY STORAGE PROJECT



Flywheel energy storage consists in storing kinetic energy via the rotation of a heavy object. Find out how it works. Flywheel energy storage consists in storing kinetic energy via the rotation of a heavy wheel or cylinder, which is usually set in motion by an electric motor, then recovering this energy by using the motor in reverse as a power



On June 7th, Dinglun Energy Technology (Shanxi) Co., Ltd. officially commenced the construction of a 30 MW flywheel energy storage project located in Tunliu District, Changzhi City, Shanxi Province. This project represents China's first grid-level flywheel energy storage frequency regulation power s



OverviewApplicationsMain componentsPhysical characteristicsComparison to electric batteriesSee alsoFurther readingExternal links



The main components of a typical flywheel. A typical system consists of a flywheel supported by rolling-element bearing connected to a motor???generator.The flywheel and sometimes motor???generator may be enclosed in a vacuum chamber to reduce friction and energy loss.. First-generation flywheel energy-storage systems use a large steel flywheel rotating on mechanical ???

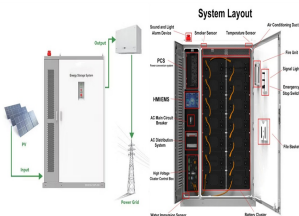


It's been taking quite a bit of time to research, so in the meantime, I thought it'd be fun to re-introduce Clean Energy MBA readers to a well-known energy storage project (i.e. the 20MW Stephentown Flywheel developed by Beacon Power) and also provide an intro to energy storage along the way. It's

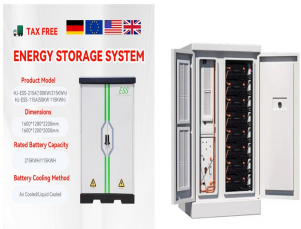
ELECTRIC FLYWHEEL ENERGY STORAGE PROJECT



West Boylston Municipal Light Plant (WBMLP) has installed a flywheel energy storage system (FESS), the first long-duration flywheel in the Northeast. The flywheel began operating on January 1, 2019. The 128 kilowatt (kW) behind-the-meter FESS is interconnected through the plant's existing 370 kW solar project.



Flywheel energy storage technology is a form of mechanical energy storage that works by accelerating a rotor (flywheel) to a very high speed and maintaining the energy in the system as kinetic energy.



The project represents a pioneering use of a semi-buried underground well system designed to provide a safe environment for the operation, waterproofing, cooling, and maintenance of the flywheel unit. Flywheel energy storage technology is a form of mechanical energy storage that works by accelerating a rotor (flywheel) to a very high speed and



Flywheel Energy Storage Demonstration National mechanical energy back into electrical energy. Amber Kinetics will improve the San Diego Gas and Electric PROJECT DURATION 3/1/2010???12/31/2014 BUDGET Total Project Value \$7,457,591 DOE/Non-DOE Share \$3,694,660/\$3,762,931 EQUIPMENT Power Electronics



The Office of Electricity's (OE) Energy Storage Division's research and leadership drive DOE's efforts to rapidly deploy technologies commercially and expedite grid-scale energy storage in meeting future grid demands. The Division advances research to identify safe, low-cost, and earth-abundant elements for cost-effective long-duration energy storage.

ELECTRIC FLYWHEEL ENERGY STORAGE PROJECT



The speed of the flywheel undergoes the state of charge, increasing during the energy storage stored and decreasing when discharges. A motor or generator (M/G) unit plays a crucial role in facilitating the conversion of energy between mechanical and electrical forms, thereby driving the rotation of the flywheel [74]. The coaxial connection of both the M/G and the flywheel signifies ???



The Max Planck Institute ??? Flywheel Energy Storage System is a 387,000kW flywheel energy storage project located in Garching, Bavaria, Germany. The rated storage capacity of the project is 770kWh. The electro-mechanical battery storage project uses flywheel storage technology. The project will be commissioned in 1991.



Thanks to the unique advantages such as long life cycles, high power density, minimal environmental impact, and high power quality such as fast response and voltage stability, the flywheel/kinetic energy storage system (FESS) is gaining attention recently. There is noticeable progress in FESS, especially in utility, large-scale deployment for the electrical grid, ???



Energy storage systems (ESSs) are the technologies that have driven our society to an extent where the management of the electrical network is easily feasible. The balance in supply ???



storage technologies in electrical energy storage applications, as well as in transportation, military services, and space satellites [8]. With storage capabilities of up to 500 MJ and power ranges from kW to GW, they perform a variety of important energy storage applications in a power system [8,9]. The most common applications of ???ywheels

ELECTRIC FLYWHEEL ENERGY STORAGE PROJECT



In this paper, state-of-the-art and future opportunities for flywheel energy storage systems are reviewed. The FESS technology is an interdisciplinary, complex subject that ???



The most common applications of ???ywheels in electrical energy storage are for uninterruptible power. commercial projects for each application. Flywheel energy storage systems can deliver.



2 ? According to Energy-Storage.News, the Dinglun Flywheel Energy Storage Power Station is claimed to be the largest of its kind, at least per the site's developers in Changzhi.



1 Introduction. Among all options for high energy store/restore purpose, flywheel energy storage system (FESS) has been considered again in recent years due to their impressive characteristics which are long cyclic endurance, high power density, low capital costs for short time energy storage (from seconds up to few minutes) and long lifespan [1, 2].



Flywheel Energy Storage System (FESS) Revterra Kinetic Stabilizer Sized to Meet Even the Largest of Projects. Our industrial-scale modules provide 2 MW of power and can store up to 100 kWh of energy each, and can be combined to meet a project of any scale. Low-Cost Steel Flywheel Stores Kinetic Energy. Electric energy is converted into