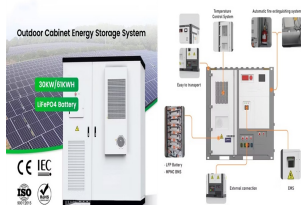


# ELEPHANT PHOTOVOLTAIC PANEL SIZE



Solar panels generate clean energy and significant savings, but they aren't a one-size-fits-all solution. The size and weight of solar panels vary depending on the make and model, with most residential panels measuring about 5.5 feet ???



The India solar PV panels market size was estimated to be USD 7.31 billion in 2023 and is projected to grow at a CAGR of 9.4% from 2024 to 2030. The solar PV market in India is experiencing significant growth driven by a combination of factors. It includes supportive government policies such as the Jawaharlal Nehru National Solar Mission (JNNSM



Table 1: Solar panel cable for amp chart for 90°C (194°F) Copper. Amperage tables exist for copper cables reflecting the current carrying capacity of the different gauge cables at different operating temperatures. Temperatures as high as 150°C are considered when selecting cables for wiring up solar panels.



A conventional 60-cell solar panel will produce 300 watts and a 72-cell solar panel can produce 400 watts of electricity. Home solar panel size. A typical home solar panel today is usually about 65 inches by 39 inches or 5.4 feet by 3.25 feet. Of course, there might be some variation among different manufacturers.



Some common solar panel system sizes include a 3kW solar panel system, a 4 kilowatt solar panel system and a 5kW solar panels. For instance, a typical 2kW solar panel system suited for 1-3 people will need ???



When considering solar panel dimensions, weight can vary based on their solar panel size and type. For residential installations in the UK, panels generally weigh between 18-21 kg each. Commercial PV panels tend to be heavier and range anywhere between 22-30 kg.

# ELEPHANT PHOTOVOLTAIC PANEL SIZE

## Commercial and Industrial ESS

- Budget-Friendly Solution
- Renewable Energy Integration
- Modular Design for Flexible Expansion



What Are the Standard Solar Panel Sizes? When it comes to standard solar panel sizes, like 300w or 500w, it is essential to determine the size of a solar panel system based on these standard sizes. The dimensions of a ???



Solar panel sizes guide with residential & commercial solar panel dimensions, different types & how many solar panels you need for Solar panels are available in a wide range of sizes, types, and total wattage. The standard solar panel size measures an average of 5.4 by 3.25 feet or 65 by 39 inches. This can cover up to 15 square feet of an



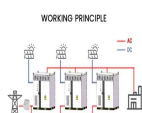
Many solar panel companies make small solar panels designed specifically for small roofs. You can also opt for high-efficiency solar panels that have conversion rates as high as 23% (compared to the industry average of ???



Solar Panel Size. It focuses on maximum electricity generation and overall capacity rather than the quantity of panels. To calculate the required system size, multiply the number of panels by the output. For example, a 6.6 ???



Solar Panel Size In Dimensions. The dimensions of a solar panel are its physical size in terms of length, width, and thickness, including the frame. You need to know whether you have adequate roof space for your solar panels, and their dimensions will give you an idea of the overall scale of the solar energy system you're considering.



The size of a 300w solar panel A 300w solar panel is generally a popular choice for residential applications and small commercial systems thanks to its balance of performance and footprint. A panel of this wattage can generate enough energy to power multiple home appliances and

# ELEPHANT PHOTOVOLTAIC PANEL SIZE

---

significantly help reduce energy costs.

# ELEPHANT PHOTOVOLTAIC PANEL SIZE



It is important to know what type of solar panel mounting system is the best for you. Then, deciding on the foundation type based on weather (wind and snow) conditions as well as size and weight of solar panels. Selection of the foundation: Helical piles or concrete piers. Perforation of the ground will be required. Selection of the



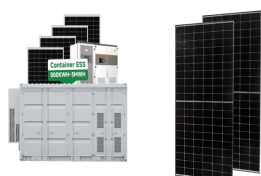
Solar Panel Size vs. Solar Panel Wattage. When searching for different solar panel sizes online, you may find your product choices are typically differentiated by their wattage, or by the number of cells on a panel, rather than their physical dimensions or arbitrary sizes like small, medium, and large.



Summary. You need around 200-400 watts of solar panels to charge many common 12V lithium battery sizes from 100% depth of discharge in 5 peak sun hours with an MPPT charge controller.; You need around 150-300 watts of solar panels to charge many common 12V lead acid battery sizes from 50% depth of discharge in 5 peak sun hours with an ???



Discover which solar panel sizes and dimensions are the most common in the UK, as well as which size is the best for your home. 0330 818 7480. Become a Partner. Menu. Solar Panels. Heat Pumps. Boilers. Windows. ???



Due to its abundant natural supply and environmentally friendly features, solar photovoltaic (PV) production based on renewable energy is the ideal substitute for conventional energy sources. The efficiency of solar power generation under partial shading conditions (PSCs) is significantly increased by maximizing power extraction from the PV system. The maximum ???

# ELEPHANT PHOTOVOLTAIC PANEL SIZE



Step 1: Turn on all the appliances and devices you want to power with the solar panel system. Step 2: Use a clamp meter to measure the current consumption in amps (A) by clamping it around the phase wire of your electric meter. Step 3: The clamp meter will display the current consumption in amps. Step 4: Multiply the amps by the system voltage (e.g., 120V in ???)



Solar panel inverter. The solar inverter is a key part of any solar panel system, converting electricity from DC to AC. This needs to happen before the inverter can be installed. The cost of your inverter will be included in the final quote of your solar panel system, which will approximately be between \$500-\$1,000, depending on the power you



You might also hear of 120 half-cell panels (equivalent size to 60 cells) or 144 half-cell panels (equivalent size to 72 cells). These half-cell panels, as you might suspect, have their solar cells cut in half.



Clean Elephant is of the most experienced solar panel cleaning companies in Essex. We have equipped ourselves with professional solar panel cleaning equipment, know how to clean solar panels safely and effectively and have positioned ourselves to offer a high quality professional solar panel cleaning service. We use safe scaffold towers.



Learning about different solar panel types, like 60-cell, 72-cell, and 96-cell, is key to optimizing solar panel efficiency. When you match the system size with your energy needs and consider the climate, you make smart choices for sustainable energy use.

# ELEPHANT PHOTOVOLTAIC PANEL SIZE



Average Area of a Single Solar Panel. A single solar panel box generally spans between 12 to 18 square feet, depending on its intended energy output. Factors That Determine Solar Panel Size Panel Material. Various ???



With the  $-0.35\%/^{\circ}\text{C}$  temperature coefficient of open circuit voltage offered by the EcoFlow 400W Rigid Solar Panel, this means that for each  $1^{\circ}\text{C}$  change in temperature, the voltage, power output, or current of your solar panel will change by 0.35%.



Understanding Solar Panel Dimensions and Sizes. Solar photovoltaic (PV) systems contribute to environmental conservation by reducing carbon footprint, lowering energy costs, and providing independence from the power grid through energy storage. Consequently, an increasing number of individuals in the UK have opted to invest in solar panels.



With increased size, a solar panel can house more solar cells, capturing more sunlight, and hence, produces more electricity. If you're trying to understand commercial solar panel sizes and wattage, remember, this correlation is key. The wattage of a commercial solar panel describes its power output ??? how much power it can produce under



Factors that could influence a solar panel's weight include: Size: Larger panels with more surface area will generally be heavier. Materials: The type and thickness of materials used in the panel's construction, such as the frame, glass, and back sheet, will affect its weight. Type of Cells: Different types of photovoltaic cells may have varying weights.