

ENERGY STORAGE 400A COPPER BUSBAR



What is a 400A busbar? It boasts a 400A rating, making it ideal for high-current applications up to 48V DC and 300V AC. This makes it a robust solution for power distribution in various vehicles and applications. The 400A busbar is built with an 8mm (0.32???) thick copper bus bar plate, ensuring exceptional conductivity and efficient power distribution.



What is a 400 amp solid copper busbar? This 400 amp solid copper busbar features six 5/16??? (M8) stud terminals, ensuring versatile connectivity for high-current applications in demanding environments. Crafted with an 8mm thick solid copper bar and corrosion-resistant stainless steel terminals, it guarantees maximum conductivity and lasting performance.



What is bb400-t6m8-c 400 amp solid copper busbar? BB400-T6M8-C 400 Amp Solid Copper Busbar Features This busbar distribution block is designed to handle demanding electrical systems. It boasts a 400A rating, making it ideal for high-current applications up to 48V DC and 300V AC. This makes it a robust solution for power distribution in various vehicles and applications.



What is the GRL 400A-630A busbar system? The GRL 400A-630A busbar system is a modular busbar system that is easy to install and use. It is ideal for various applications, including 20mm, 25mm, and 30x5mm flat copper busbars. The keyword for this product is 'ring'.



How long does a copper busbar last? Copper with tin coat, it gets strength from these coating which does not allow to rust or corrosion over duration of time. This makes the busbar fairly resistant to breaking and able to last a very long time (i. e., you will have it for years and not break or wear out).

ENERGY STORAGE 400A COPPER BUSBAR



What type of copper busbar does Daier manufacture? We are here to help you and give you the information you need. Daier manufactures 400 Amp solid copper busbar with 6x5/16" (M8) studs, and 8mm thick copper. Various amperages & configurations available.



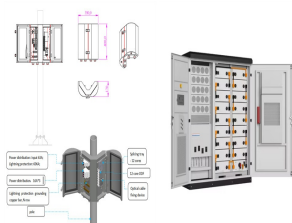
Energy Storage System (ESS) 12mm) to fit different applications; Rated at 120A, 150A, 200A, 250A, 300A, 350A and 400A, high current connectors offering high power capacity. Excellent sealing performance; 360 ???



DPCB Punched Plain Copper Busbar, Single; DPCB Punched Plain Copper Busbar, Double; TCB Threaded Busbar; Energy Storage; Datacenter; Renewable Energy; Railway; Solutions. Engineering Design Services; BS ???



Connectors for connecting to the busbar simplify the installation of slide-in systems in energy storage systems. The connectors with reverse-polarity protection are plugged onto the rear side of a storage system and are suitable ???



GRL's 400A-630A busbar electrical system is a versatile, easy-to-install option rated up to 690V. The system can be used with flat copper busbars in 15mm, 20mm, 25mm or 30x5mm thickness, making it an excellent choice ???



In battery systems for large-scale energy storage or electric vehicles, Cu-flex busbars can be used to connect battery cells or modules. A Cu-flex flexible copper busbar is made of strands of copper wires that are woven ???

ENERGY STORAGE 400A COPPER BUSBAR



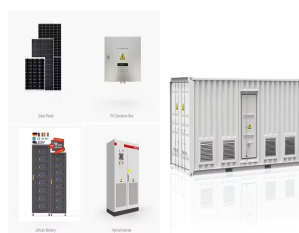
Switchgear, Busway, Circuit Breaker, Photovoltaic Ribbon, Energy Storage, Transformer. More. Company Introduction. Trade Capacity. High and low voltage busway, Tin-plate copper strip, Wetown Electric (Stock Code SH. ???



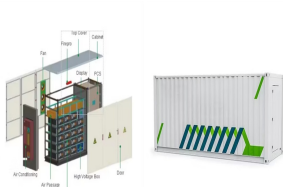
GRL 400A-630A ring busbar system adopts modular design, which is easy to install and easy to use. Energy Storage Fuse Link; PV Fuse Link; High Voltage Fuse; Fuse Holder and Fuse Base. Fuse Holder; Application ???



Energy Storage Connector. Energy storage connectors are mainly used to connect battery modules of energy storage systems in series, making it safer for workers to install energy storage systems (ESS). Battery Storage ???



The 400A busbar is built with an 8mm (0.32???) thick copper bus bar plate, ensuring exceptional conductivity and efficient power distribution. Durable stainless steel studs and nuts ???



GRL 400A-630A busbar system adopts modular design, which is easy to install and easy to use. This busbar system is ideal for a variety of applications, including 20mm, 25mm and 30x5mm flat copper busbars.



DPCB Punched Plain Copper Busbar, Single; DPCB Punched Plain Copper Busbar, Double; TCB Threaded Busbar; UD-400A. Read more Read less. Print This Page Need technical support or a quote? We're here to help. ???

ENERGY STORAGE 400A COPPER BUSBAR



GCS2 connector is a safe and economical two-way energy storage connector for connecting bus bars, rated current 300A, operating voltage up to 1500V DC. It has a wide range of applications in energy storage solutions ???



digital energy, instrumentation & panel meters, rf/gsm & plc. meter counters. digital energy, instrumentation & panel meters, rf/gsm & plc. copper busbar 45x10x300l plated and threaded 15xm12. acdc. bfc4510. list price r 926.60 ???



Supplier Homepage Products Energy Storage Connector& Cable Fpic IP67 Waterproof High Current 60A 100A 120A 150A 200A 250A 300A 350A 1500VDC Battery Energy Storage Connector Related Categories Battery Pack



Pylontech Lithium Energy Storage Systems. Batteries; Mounting Solutions; Cables & Accessories; Automotive Batteries ; Copper Crimp Lugs; Insulated Terminals; Heat Shrink Terminals; ???



Insulated copper braid X=350 mm L=372mm 400A. Skip to main content Fulltext search Search. search; Bookmark Stem, energy storage systems for reduced electricity billing Insulated copper braids - Busbar. EN ???



Add to cart. where to purchase. 3 x Copper Busbar sets; 1 x 2/0 AWG Battery to Inverter Cable set (choose a length) Additional Information. LiFePO4 Modular ???

ENERGY STORAGE 400A COPPER BUSBAR



This tinned copper busbar is used to distribute electrical power in a safe and efficient manner. Copper with tin coat, it gets strength from these coating which does not allow to rust