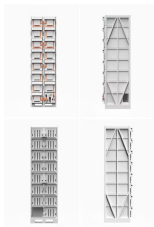
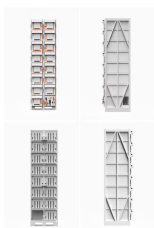


ENERGY STORAGE BATTERY CABINET

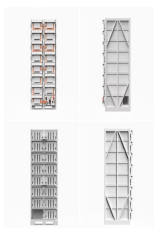
USER MANUAL



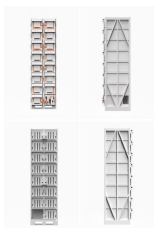
Are there user-maintainable parts inside the battery unit? There are no user-maintainable parts inside the battery unit. Only personnel approved by SUNGROW can remove, replace and dispose of the batteries. Users are not allowed to maintain batteries without guidance. To avoid electric shock, do not perform any other maintenance operations beyond those described in this manual.



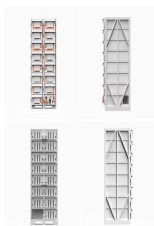
How to connect a battery to an energy storage inverter? Rack: Single battery: Connect the positive and negative poles of the battery to the positive and negative terminal of the DC port of the energy storage inverter (or the junction box) with a red and black cables (Max number 8): The connection of several batteries is on



How to store LFP battery? temperature conditions. Self-discharge of the LFP battery pack is 1-2% per month. Keep the battery SOC at 40%-60% during storage. Keep the battery pack away from corrosive substances, inflammable and explosive material as well as hazardous gases. For long-term storage (>6 months), charge the LFP battery to more than 80% of its rated



What are the parameters of ST2752UX/ST2695UX battery? 11 Appendix 11.1 System Parameters table 11-1 ST2752UX/ST2695UX Parameter
ST2752UX ST2695UX Battery Data Cell type Battery capacity (BOL) 2752 kWh 2695 kWh System output voltage 1160 ~ 1500 V 1160 ~ 1500 V range General Data Dimensions of battery 9340*2600*1730mm unit (W *H *D) Weight of battery unit 26,400 kg

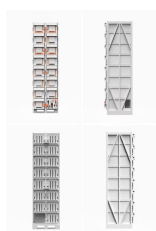


How do I install the E-box battery? 4.1 Install the battery The E-BOX SERIES can be installed either vertically or horizontally. In this chapter, instructions here are only for horizontal installation such as: install it on in a 19-inch cabinet. Vertical installation is similar. All equipment must be placed steadily during installation and

ENERGY STORAGE BATTERY CABINET USER MANUAL



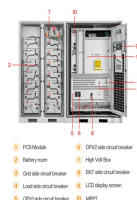
What are the precautions before maintenance of Sungrow batteries? 10.1 Precautions Before Maintenance ??? Do not open the door to maintain the batteries in rainy, humid or windy days. SUNGROW shall not be held liable for any damage caused by violation of the warning.



Enershare is a leading manufacturer of Solar lithium battery Energy Storage Systems, providing solutions for utility, commercial and residential applications. 215KWh Outdoor energy storage cabinet 768V 30KW 60KW ???



. 27 Contact Information . 29 Introduction The GUS Technology Home Energy Storage System is a 15 kWh capacity ???



CATL EnerOne 372.7KWh Liquid Cooling battery energy storage cabinet lifepo4 battery container EnerOne Outdoor Liquid Cooling Battery System Features: Basic Parameters Basic Parameters Configuration 1P416S Cell ???



Product Name: ECO-E215WS Integrated Air-cooled Energy Storage Cabinet. The air-cooled integrated energy storage cabinet adopts the "All in One" design concept, integrating long-life battery cells, efficient bi-directional balancing ???

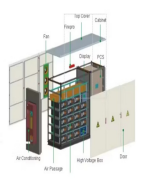
ENERGY STORAGE BATTERY CABINET USER MANUAL



The SolaX ESS-TRENE is an all-in-one C&I energy storage cabinet, available in liquid cooling and air cooling models. Equipped with high-performance LFP cells, advanced energy management, and robust safety features, suitable for ???



Sungrow's PowerTitan 2.0 offers scalable 5MWh liquid-cooled energy storage, featuring 2.5MW/1.25MW outputs, designed for high-demand commercial & industrial applications. The electrical cabinet and battery cabinet are ???



Outdoor Liquid-Cooled Battery Cabinet 6000 Cycles of Energy Storage Battery System, Find Details and Price about Solar Panel Lithium Battery from Outdoor Liquid-Cooled Battery Cabinet 6000 Cycles of Energy Storage ???



Industrial and Commercial ESS 215kWh Energy Storage Cabinet Description. From standardized battery boxes to configurable modular energy storage systems, achieving dual-platforms and multi-series product system, to meet ???