

ENERGY STORAGE BATTERY DIRECTION



How do batteries store energy? Batteries and similar devices accept, store, and release electricity on demand. Batteries use chemistry, in the form of chemical potential, to store energy, just like many other everyday energy sources. For example, logs and oxygen both store energy in their chemical bonds until burning converts some of that chemical energy to heat.



Can you store electricity in a battery? ??? You cannot catch and store electricity, but you can store electrical energy in the chemicals inside a battery. ??? There are three main components of a battery: two terminals made of different chemicals (typically metals), the anode and the cathode; and the electrolyte, which separates these terminals.



What is a battery & how does it work? ??? A battery is a device that is able to store electrical energy in the form of chemical energy, and convert that energy into electricity, ??? says Antoine Allanore, a postdoctoral associate at MIT ???s Department of Materials Science and Engineering.



How does a rechargeable battery work? To accept and release energy, a battery is coupled to an external circuit. Electrons move through the circuit, while simultaneously ions (atoms or molecules with an electric charge) move through the electrolyte. In a rechargeable battery, electrons and ions can move either direction through the circuit and electrolyte.



How do commercial batteries work? Analyzing the energetics of the overall cell reaction can also provide insights into how commercial batteries work and where their energy is stored. The most widely used household battery is the 1.5 V alkaline battery with zinc and manganese dioxide as the reactants. Six 1.5 V cells are also combined in series to produce a 9 V battery.

ENERGY STORAGE BATTERY DIRECTION



Why is battery storage important? This storage is critical to integrating renewable energy sources into our electricity supply. Because improving battery technology is essential to the widespread use of plug-in electric vehicles, storage is also key to reducing our dependency on petroleum for transportation.



McKinsey's Energy Storage Team can guide you through this transition with expertise and proprietary tools that span the full value chain of BESS (battery energy storage systems), LDES (long-duration energy storage), and TES (thermal energy storage). As part of the Battery Accelerator Team, we support energy storage manufacturers, renewable



Flow battery energy storage (FBES)??? Vanadium redox battery (VRB)??? Polysulfide bromide battery (PSB)??? Zinc???bromine (ZnBr) battery: Paper battery Flexible battery: Electrical energy storage (ESS) Electrostatic energy storage??? Capacitors??? Supercapacitors:

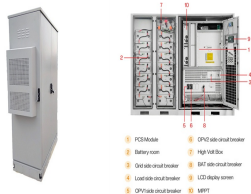


Battery storage, or battery energy storage systems (BESS), are devices that enable energy from renewables, like solar and wind, to be stored and then released when the power is needed most.. Lithium-ion batteries, which are used in mobile phones and electric cars, are currently the dominant storage technology for large scale plants to help electricity grids ???



6 UTILITY SCALE BATTERY ENERGY STORAGE SYSTEM (BESS)
BESS DESIGN IEC - 4.0 MWH SYSTEM DESIGN Battery storage systems are emerging as one of the potential solutions to increase power system flexibility in the presence of variable energy resources, such as solar and wind, due to their

ENERGY STORAGE BATTERY DIRECTION



Because the stationary energy storage battery market is currently dominated by LIBs, the equipment for this type of battery (i.e., thin film electrodes) To galvanize future research in the right direction, we addressed the challenges ???



For energy storage, the capital cost should also include battery management systems, inverters and installation. The net capital cost of Li-ion batteries is still higher than \$400 kWh ???1 storage. The real cost of energy storage is the LCC, which is the amount of electricity stored and dispatched divided by the total capital and operation cost



ESMAP has created and hosts the Energy Storage Partnership (ESP), which aims to finance 17.5-gigawatt hours (GWh) of battery storage by 2025 ??? more than triple the 4.5 GWh currently installed in all developing countries. So far, the program has mobilized \$725 million in concessional funding and will provide 4.7 GWh of battery storage (active



The design of the flywheel is important, especially in the direction of any device on the quality of the bearings that support the shaft between the motor and the generator. Their high energy density and long cycle life make them ideal for grid-scale energy storage: Sodium ion battery: Moderate to high: Moderate to high: Moderate to high: Good:



Battery Energy Storage Systems (BESS) - or just battery storage - are systems that allow the energy created by renewable sources, such as wind and solar, to be stored and then released at a later date. Why is it important? Battery storage enables reliable, consistent delivery of renewable energy into customers' homes. Although green energy

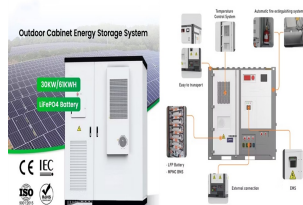


An alkaline battery can deliver about three to five times the energy of a zinc-carbon dry cell of similar size. Alkaline batteries are prone to leaking potassium hydroxide, so these should also be removed from devices for long-term storage. While some alkaline batteries are rechargeable, most

ENERGY STORAGE BATTERY DIRECTION

are not.

ENERGY STORAGE BATTERY DIRECTION



Battery energy storage system (BESS) is widely used to smooth RES power fluctuations due to its mature technology and relatively low cost. However, the energy flow within a single BESS has been proven to be detrimental, as it increases the required size of the energy storage system and exacerbates battery degradation [3]. The flywheel energy storage system ???



In the present era of sustainable energy evolution, battery thermal energy storage has emerged as one of the most popular areas. A clean energy alternative to conventional vehicles with internal combustion engines is to use lithium-ion batteries in electric vehicles (EVs) and hybrid electric vehicles (HEVs). Air flow direction and inlet



The lead acid battery has been a dominant device in large-scale energy storage systems since its invention in 1859. It has been the most successful commercialized aqueous electrochemical energy storage system ever since. In addition, this type of battery has witnessed the emergence and development of modern electricity-powered society.



By installing battery energy storage system, renewable energy can be used more effectively because it is a backup power source, less reliant on the grid, has a smaller carbon footprint, and enjoys long-term financial benefits. By switching the voltage direction, energy is released. The term "supercapacitor" refers to the energy density



As a flexible power source, energy storage has many potential applications in renewable energy generation grid integration, power transmission and distribution, distributed generation, micro grid and ancillary services such as frequency regulation, etc. In this paper, the latest energy storage technology profile is analyzed and summarized, in terms of technology ???

ENERGY STORAGE BATTERY DIRECTION



Battery energy storage systems (BESSs) have become increasingly crucial in the modern power system due to temporal imbalances between electricity supply and demand. The power system consists of a growing number of distributed and intermittent power resources, such as photovoltaic (PV) and wind energy, as well as bidirectional power components



??? Energy storage systems ??? Automotive Target Applications Features
 ???Digitally-controlled bi-directional power stage operating as half-bridge battery charger and current fed full-bridge boost converter ???2kW rated operation for discharge and 1kW rated for charging ???High efficiency >95.8% as charger & >95.5% as boost converter



In order to facilitate the local sharing of renewable energy, an energy sharing management method of multiple microgrids (MGs) with a battery energy storage system (BESS) and renewable energy sources (RESs) is developed. First, a virtual entity named the energy sharing provider (ESP), which acts as an agent for MGs, is introduced to minimize the power loss cost. Second, ???



Delta offers Energy Storage Systems (ESS) solution, backed by over 50 years of industry expertise. Our solutions include PCS, battery system, control and EMS, supported by global R& D, manufacturing, and service capabilities. Delta's battery energy storage system (BESS) utilizes LFP battery cells and features high energy density, advanced



Superconducting magnetic energy storage (SMES) systems store energy in the magnetic field created by the flow of direct current in a superconducting coil that has been cryogenically cooled to a temperature below its superconducting critical temperature. This use of superconducting coils to store magnetic energy was invented by M. Ferrier in 1970. [2]A typical SMES system ???

ENERGY STORAGE BATTERY DIRECTION



Much of the energy of the battery is stored as "split H₂O" in 4 H⁺ (aq), the acid in the battery's name, and the O²⁻ ions of PbO₂ (s); when 2 H⁺ (aq) and O²⁻ react to form the strong ???



The analyst said he expects most of the projects involved to be new-build battery storage assets, although the fact that ENGIE's energy storage subsidiary ENGIE EPS has said it will deliver 25MW of its Fast Reserve availability from a vehicle-to-grid (V2G) project in Turin implies that "some utilities have implemented some innovation" too, the Clean Horizon ???



The existing thermal runaway and barrel effect of energy storage container with multiple battery packs have become a hot topic of research. This paper innovatively proposes an optimized system for the development of a healthy air ventilation by changing the working direction of the battery container fan to solve the above problems.

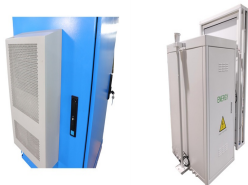


Battery Energy Storage. Systems (BESS) Benefits of BESS. Energy storage systems enable a more efficient and resilient electrical grid, creating many benefits for consumers, businesses, and communities. Bolster a Sustainable Electrical Grid. Enables electricity to be saved and used when and where it is needed most. Provides more flexibility to

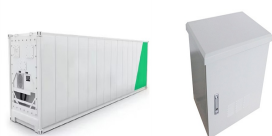


Tehachapi Energy Storage Project, Tehachapi, California. A battery energy storage system (BESS) or battery storage power station is a type of energy storage technology that uses a group of batteries to store electrical energy. Battery storage is the fastest responding dispatchable source of power on electric grids, and it is used to stabilise those grids, as battery storage can ???

ENERGY STORAGE BATTERY DIRECTION



In a new paper published in Nature Energy, Sepulveda, Mallapragada, and colleagues from MIT and Princeton University offer a comprehensive cost and performance evaluation of the role of long-duration energy storage (LDES) technologies in transforming energy systems. LDES, a term that covers a class of diverse, emerging technologies, can respond



Energy storage systems are essential in modern energy infrastructure, addressing efficiency, power quality, and reliability challenges in DC/AC power systems. Recognized for their indispensable role in ensuring grid stability and seamless integration with renewable energy sources. These storage systems prove crucial for aircraft, shipboard ???



The containerized energy storage battery system studied in this paper is derived from the "120TEU pure battery container ship" constructed by Wuxi Silent Electric System Technology Co., Ltd. The ship's power supply system is connected to a total of three containerized lithium battery systems, each with a battery capacity of 1540 kWh, and



Since its inception, the EPRI Energy Storage Roadmap was intended to guide the direction of EPRI's energy storage efforts to ensure delivery of relevant and impactful resources to its Members, the industry, and the public. The following table maps EPRI's energy storage related publications to the relevant Future State. The table may be sorted



This reaction can be reversed by passing a current in the opposite direction, recharging the battery. This is widely considered as the first commercialised battery, used to power lamps in railway carriages. This battery also made the world's first electrified transport possible, built in 1884 by Thomas Parker. The essential need for