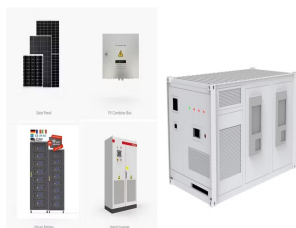


# ENERGY STORAGE BOX MODELING



The black box model can be developed based on empirical or data-driven modeling. This modeling does not rely on (ANNs) can provide satisfactorily accurate results in modeling the battery energy storage systems; however, extreme gradient boosting and fuzzy logic algorithms can be considered to provide improved results. Black box models, also



robotics, EV charging station, data center, and seasonal energy storage, appears gradually with the technology progress and cost decrement, which desires the exploration of operation and commercial modes. Last but not the Advanced modeling methods for ESSs, including grey box modeling, energy-mass balance model, neural network



long-duration energy storage (LDES) and multi-day energy storage (MDS) technologies could serve as DEFRs and help New York achieve a reliable, affordable, zero-carbon grid. LDES is defined as storage with durations between 10 and 24 hours.<sup>3</sup> The U.S. Department of Energy's Pathways to Commercial



Schematic view of the hanalike ESS model based on previously published sub-models, "alawa for degradation simulation [47], apo for ECM modeling of the single cells [45], ili for cell-to-cell



Grey-box modelling combines physical and data-driven models to benefit from their respective advantages. Neural ordinary differential equations (NODEs) offer new possibilities for grey-box modelling, as differential equations given by physical laws and neural networks can be combined in a single modelling framework. This simplifies the simulation and optimization ???

# ENERGY STORAGE BOX MODELING



With the increasing deployment of offshore wind power plants (WPPs), the grid-forming (GFM) battery energy storage system (BESS) recently emerges as an attractive solution to improve the dynamic



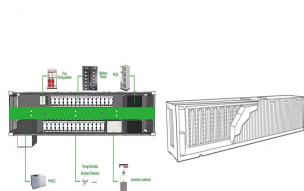
In recent years, analytical tools and approaches to model the costs and benefits of energy storage have proliferated in parallel with the rapid growth in the energy storage market. Some analytical tools focus on the technologies themselves, with methods for projecting future energy storage technology costs and different cost metrics used to compare storage system designs. Other ???



Purpose of Review Energy storage is capable of providing a variety of services and solving a multitude of issues in today's rapidly evolving electric power grid. This paper reviews recent research on modeling and optimization for optimally controlling and sizing grid-connected battery energy storage systems (BESSs). Open issues and promising research ???



With the increasing deployment of offshore wind power plants (WPPs), the grid-forming (GFM) battery energy storage system (BESS) has recently emerged as an attractive solution to improve the dynamic performances of WPPs. is developed first. This allows the impedance model of offshore WPP, including a black-box model of long transmission



??? Opportunity exists for project teams to utilize energy modeling software to help evaluate design decisions in terms of life-cycle cost impacts in order to maximize ??? Battery storage ??? Concentrating solar power ??? Wind ??? Geothermal ??? Biomass ??? Solar water heating Financials ??? Behind-the-meter ??? residential

# ENERGY STORAGE BOX MODELING



rather than from a black-box model. Therefore, in this paper, we present a dynamic model for a metal hydride energy storage system along with a model predictive control strategy for track-ing the desired heat transfer rates in each reactor of a two-reactor metal hydride system. Speci cally, in Section 2, we present the dynamic model of the metal



Background In an ever-changing world where needs increase daily due to economic growth and demographic progression, where prices are unstable, where reserves are running out, where climate change is topical, the energy issues are increasingly marked by the question of sustainability. In many developing countries, wood and subsidized butane are the ???



Lithium-ion batteries are a popular choice for a wide range of energy storage system applications. The current motivation to improve the robustness of lithium-ion battery applications has stimulated the need for in-depth research into aging effects and the establishment of lifetime prediction models. T1 - Review of "grey box" lifetime



Buildings consume approximately  $\frac{3}{4}$  of the total electricity generated in the United States, contributing significantly to fossil fuel emissions. Sustainable and renewable energy production can reduce fossil fuel use, but necessitates storage for energy reliability in order to compensate for the intermittency of renewable energy generation. Energy storage is critical for success in ???



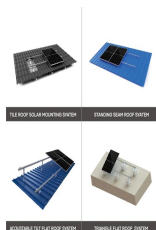
This paper summarizes capabilities that operational, planning, and resource-adequacy models that include energy storage should have and surveys gaps in extant models. Given its physical characteristics and the range of services that it can provide, energy storage raises unique modeling challenges. This paper summarizes capabilities that operational, ???

# ENERGY STORAGE BOX MODELING

SUPPORT REAL-TIME ONLINE  
MONITORING OF SYSTEM STATUS



The energy storage density is improved through the deep coupling of daily energy storage and cross-seasonal energy storage. A mathematical model of the system-performance analysis is established.



Results show the need for a black box model that can take into account the different seasonal performance of the LHTESS. In this analysis the best fit was achieved by means of Random Forest models with an accuracy higher than 90%. Bergman T L and Faghri A 2011 Enhancement of latent heat energy storage using embedded heat pipes International



Grey-box modeling, as one of the three fundamental modeling techniques for building energy models, has many advantages compared with black-box modeling and white-box modeling. It has been widely applied to solve problems of building technologies, such as building load estimation, control and optimization, and building-grid integration.

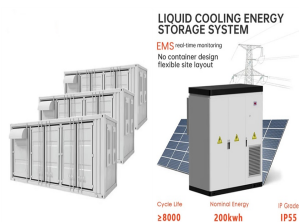


Lithium-ion batteries are a popular choice for a wide range of energy storage system applications. The current motivation to improve the robustness of lithium-ion battery applications has stimulated the need for in-depth research into aging effects and the establishment of lifetime prediction models. Consequently, there is a rising need for



The current energy-related modeling techniques, involving the prediction, management, and optimization of the building energy systems design and control, can be grouped into three categories, physics-based modeling (i.e., white-box models), data-driven modeling (i.e., black-box models), and hybrid modeling (i.e., grey-box models), by reflecting both physical ???

# ENERGY STORAGE BOX MODELING



Hydrogen Energy Storage: Experimental analysis and modeling Monterey Gardiner U.S. Department of Energy question box .  
hydrogenandfuelcells.energy.gov . NREL is a national laboratory of the U.S. Department of Energy, Office of Energy Efficiency and Renewable Energy, operated by the Alliance for Sustainable Energy, LLC. Cutter, E., L



Battery energy storage systems (BESS) have been playing an increasingly important role in modern power systems due to their ability to directly address renewable energy intermittency, power system technical support and emerging smart grid development [1, 2]. To enhance renewable energy integration, BESS have been studied in a broad range of ???



They are a pure black-box model, and a grey-box model based on the Number of Transfer Units (or effectiveness-NTU) approach. Energy storage is essential to facilitate the effective utilization of renewable energy [1], due to the intermittent nature of renewable energy resources (e.g., solar and wind energy). Thermal energy storage (TES



This paper presents models for renewable energy systems with storage, and considers its optimal operation. We model and simulate wind and solar power production using stochastic differential



Given its physical characteristics and the range of services that it can provide, energy storage raises unique modeling challenges. This paper summarizes capabilities that operational, ???

# ENERGY STORAGE BOX MODELING



The 12th International Conference on Energy Storage INNO-SP-59  
Numerical modeling and experimental study of a box-section tube bundle  
thermal energy storage for free-cooling of buildings Fabien Rouault<sup>1, 2</sup>,  
Denis Bruneau<sup>3</sup>, Patrick Sebastian<sup>4</sup>, Serge Ekomy Ango<sup>5</sup>, Jérôme  
Lopez<sup>6</sup> 1 Arts et Métiers ParisTech, I2M, UMR 5295, F-33400 Talence,  
France.



Battery energy storage systems (BESS) are of a primary interest in terms  
of energy storage capabilities, but the potential of such systems can be  
expanded on the provision of ancillary services.



Given its physical characteristics and the range of services that it can  
provide, energy storage raises unique modeling challenges. This paper  
summarizes capabilities that operational, planning, and  
resource-adequacy models that include energy storage should have and  
surveys gaps in extant models. Existing models that represent energy  
storage differ in fidelity of representing ???



Hydrogen Energy Storage: Experimental analysis and modeling Monterey  
Gardiner U.S. Department of Energy . question box .  
[hydrogenandfuelcells.energy.gov](http://hydrogenandfuelcells.energy.gov) . NREL is a national laboratory of the  
U.S. Department of Energy, Office of Energy Efficiency and Renewable  
Energy, operated by the Alliance for Sustainable Energy, LLC.  
selected-for-2