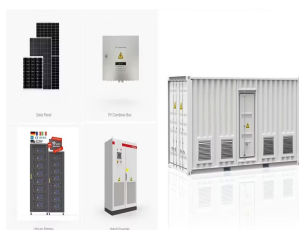


# ENERGY STORAGE CHARGING AND DISCHARGING CAPACITY

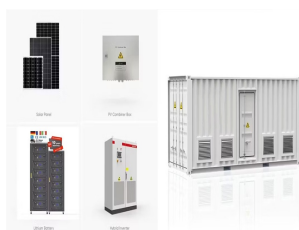


What is charge/discharge capacity cost & charge efficiency?

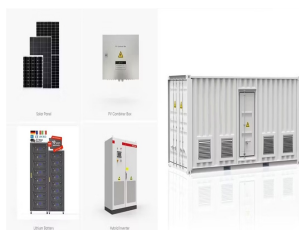
Charge/discharge capacity cost and charge efficiency play secondary roles. Energy capacity costs must be ???US\$20???kWh ???1 to reduce electricity costs by ???10%. With current electricity demand profiles, energy capacity costs must be ???US\$1???kWh ???1 to fully displace all modelled firm low-carbon generation technologies.



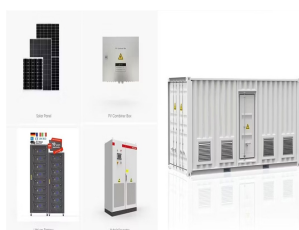
How do charging/discharging rates affect rated battery capacity? The charging/discharging rates affect the rated battery capacity. If the battery is being discharged very quickly (i.e., the discharge current is high), then the amount of energy that can be extracted from the battery is reduced and the battery capacity is lower.



Do charge power and energy storage capacity investments have O&M costs? We provide a conversion table in Supplementary Table 5, which can be used to compare a resource with a different asset life or a different cost of capital assumption with the findings reported in this paper. The charge power capacity and energy storage capacity investments were assumed to have no O&M costs associated with them.

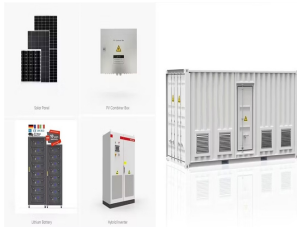


What is a battery energy storage system? A battery energy storage system (BESS) is an electrochemical device that charges (or collects energy) from the grid or a power plant and then discharges that energy at a later time to provide electricity or other grid services when needed.

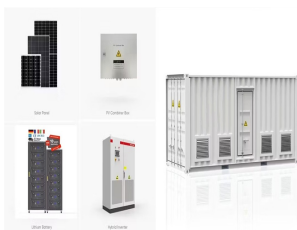


Can energy storage technologies help a cost-effective electricity system decarbonization? Other work has indicated that energy storage technologies with longer storage durations, lower energy storage capacity costs and the ability to decouple power and energy capacity scaling could enable cost-effective electricity system decarbonization with all energy supplied by VRE 8,9,10.

# ENERGY STORAGE CHARGING AND DISCHARGING CAPACITY



Can energy capacity and discharge power capacity be varied independently? In our exploration of the LDES design space it was assumed that the three scaling dimensions, that is, energy capacity, discharge power capacity and charge power capacity, can be varied independently, even though all three degrees of freedom are not possible for certain technologies.



Unlike traditional power plants, renewable energy from solar panels or wind turbines needs storage solutions, such as BESSs to become reliable energy sources and provide power on demand [1]. The lithium-ion battery, which is used as a promising component of BESS [2] that are intended to store and release energy, has a high energy density and a long energy ???



A battery energy storage system (BESS) is an electrochemical device that charges (or collects energy) from the grid or a power plant and then discharges that energy at a later time to provide electricity or other grid services when needed.



Fortunately, with the support of coordinated charging and discharging strategy [14], EVs can interact with the grid [15] by aggregators and smart two-way chargers in free time [16] due to the rapid response characteristic and long periods of idle in its life cycle [17, 18], which is the concept of vehicle to grid (V2G) [19]. The basic principle is to control EVs to charge ???



The charging energy received by EV i ??? is given by (8). In this work, the CPCV charging method is utilized for extreme fast charging of EVs at the station. In the CPCV charging protocol, the EV battery is charged with a constant power in the CP mode until it reaches the cut-off voltage, after which the mode switches to CV mode wherein the voltage is held constant ???

# ENERGY STORAGE CHARGING AND DISCHARGING CAPACITY



Energy density is the most critical factor for portable devices, while cost, cycle life, and safety become essential characteristics for EVs. However, for grid-scale energy storage, cost, cycle life, and safety take precedence over energy density. Fast charging and discharging are critical in all three cases.



Energy Management Systems play a critical role in managing SOC by optimizing time of use hence allowing the energy storage system to be ready for charge and discharge operation when needed. 2



Lepszy [29] examined the storage capacity and power charge and discharge in energy storage systems based on the day-ahead market. However, this study assumes almost unlimited energy storage capacity (e.g. salt caverns) and the selection of hours of charge and discharge based solely on historical maximum and minimum electricity prices, which is



Lithium-ion batteries have become the dominant energy storage device for portable. One data unit comprises a relaxation voltage curve after full charge with the following discharge capacity



The energy capacity of any battery is a function of discharge rate. Fundamentally, this is true because there is no such thing as zero internal resistance. Storage charge termination voltage\* \*It would be great if these values can be provided for accurate charging, normal charging, fast charging, discharging, storage charging, etc. per cell

# ENERGY STORAGE CHARGING AND DISCHARGING CAPACITY



Dielectric electrostatic capacitors<sup>1</sup>, because of their ultrafast charge/discharge, are desirable for high-power energy storage applications. Along with ultrafast operation, on-chip integration



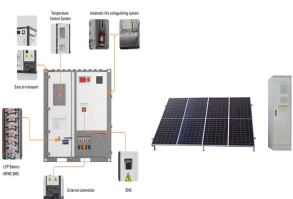
Energy storage has become a fundamental component in renewable energy systems, especially those including batteries. However, in charging and discharging processes, some of the parameters are not



A suitable charging protocol is required for the optimal charging of LIBs. During the charging of LIBs, the battery charger controls the voltage, current, and/or power of LIBs [10]. Fast charging techniques for EV applications generally aim to achieve the optimal balance between the two contradictory objectives of reducing charging time and extending the lifetime ???



K. Webb ESE 471 5 Capacity Units of capacity: Watt-hours (Wh) (Ampere-hours, Ah, for batteries) State of charge (SoC) The amount of energy stored in a device as a percentage of its total energy capacity Fully discharged: SoC = 0% Fully charged: SoC = 100% Depth of discharge (DoD) The amount of energy that has been removed from a device as a



long it will take to fill (charge) or empty (discharge) the energy storage system. Specifically, dividing the capacity by the power tells us the duration,  $d$ , of filling or emptying:  $d = E/P$ . Thus, a system with an energy storage capacity of 1,000 Wh and a power of 100 W will empty or fill in 10 hours, while a storage system with the same capacity

# ENERGY STORAGE CHARGING AND DISCHARGING CAPACITY



The basic principle of V2G technology is to control the charging and discharging process of EVs so that during low load periods, the grid dispatches EVs for charging to store excess power generation from the grid. ???



Electric vehicles (EVs) play a major role in the energy system because they are clean and environmentally friendly and can use excess electricity from renewable sources. In order to meet the growing charging demand for EVs and overcome its negative impact on the power grid, new EV charging stations integrating photovoltaic (PV) and energy storage ???



CE is the ratio between the charging capacity and discharge capacity after a full charge. Besides variations in results by types of energy storage systems, results differ based on the system's age, different charge-discharge current rates, decomposition of electrolytes, nearby temperature, and other factors. Depth of Discharge (DoD)



Thermal energy storage (TES) is of great importance in solving the mismatch between energy production and consumption. In this regard, choosing type of Phase Change Materials (PCMs) that are widely used to control heat in latent thermal energy storage systems, plays a vital role as a means of TES efficiency. However, this field suffers from lack of a ???



While reducing the RES's uncertainty, HESS can also meet the demand of MG load side. The charging/discharging station (CDS) with V2G as a transfer station for the energy interaction between EVs and MG, whose capacity planning directly affects the effect of EVs participating in scheduling and MG energy storage devices" capacity elasticity.

# ENERGY STORAGE CHARGING AND DISCHARGING CAPACITY



To optimize the battery charging and discharging states, significantly reduce the frequency of battery charging and discharging, and extend its service life, the battery and supercapacitor can be mixed as energy storage devices to achieve complementary each other, called a hybrid energy storage system (HESS) (Rezaei et al., 2022).



The integration of thermal energy storage (TES) systems in concentrated solar power (CSP) plants is a key factor to improve their competitiveness and overcome the intermittency of energy production. Currently, most planned or under construction CSP plants include integrated TES and their average storage capacity has been increasing [1].



The present study aims to investigate the performance of the low-capacity energy storage tank in different heat transfer fluid (HTF) conditions (at various flow rates) filled with spherical capsules containing nano-enhanced phase change material (nano-PCM). The total charging and discharging time of the storage tank depending on the



PDF | On Jan 1, 2022, Baoge Zhang and others published Research on VSG Frequency Characteristics and Energy Storage Device Capacity and Charge-Discharge Characteristics Based on Feedforward Branch

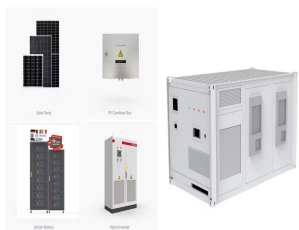


Battery Energy Storage Systems (BESS) are essential components in modern energy infrastructure, particularly for integrating renewable energy sources and enhancing grid stability. A fundamental understanding of three key parameters???power capacity (measured in megawatts, MW), energy capacity (measured in megawatt-hours, MWh), and ???



# ENERGY STORAGE CHARGING AND DISCHARGING CAPACITY

---



Compared to Use Case 1, the schedule of charging, discharging, and battery state of charge changes based on the power consumption, power generation, and energy price, however, the behavior is similar in the sense that as expected, the households select to charge the CES when the energy price is low and discharge from the CES when the energy



hydroelectric resources . Most large-scale storage systems in operation use lithium-ion technology, which is currently preferred over other battery technology because it provides fast response times and high-cycle efficiency (low energy loss between charging and discharging), while still being cost-effective.