

# ENERGY STORAGE COLD WELDING MACHINE VIDEO



How does cold welding work? Instead, the energy used for creating a weld comes in the form of pressure. During the cold welding process, unlike with fusion welding processes, no liquid or molten phase is present in the joint as can be seen in other techniques including arc welding, friction welding or laser welding.



What is cold welding? (Advantages, Disadvantages and Applications)  
Cold welding, or contact welding, is a solid-state welding process that requires little or no heat or fusion to join two or more metals together. Instead, the energy used for creating a weld comes in the form of pressure.



What are the advantages of cold welding? Cold welding delivers a number of advantages over other welding procedures, including: 1. No HAZ Cold welding doesn't create a heat affected zone (HAZ), which greatly reduces the risk of negative chemical or mechanical changes to the base materials being joined.



Why is cold welding a problem? The cold welding process has caused mechanical problems in early satellites and other spacecraft as the process does not exclude the relative motion between surfaces to be joined. This means that adhesion, fretting galling, and sticking can overlap so, for example, cold welding and fretting can occur at the same time.



Can cold welding create permanent welds? Cold welding can create permanent welds under the right conditions. If done correctly, the join can only be reversed with damage to the workpieces. However, if the cold welding is not done under the right conditions, the joins will be liable to fail.

# ENERGY STORAGE COLD WELDING MACHINE VIDEO



What metals can be cold welded? Metal to be cold welded need to be ductile but the technique is commonly used to join aluminium (including unweldable grades like the 7XXX series), 70/30 brass alloys, copper, zinc, silver and silver alloys, nickel, and gold, especially as wires. Cold welding can also be used to join metals such as stainless steel under great pressure.



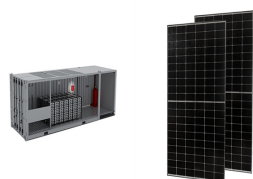
Capacitance Energy Storage Spot Welder, charge & discharge welding, the energy stored in the capacitor releases on the welding transformer instantly to produce high current. Saving electricity, small required power capacity, reducing cost, unaffected by power voltage drop, suitable for the welding of low-impedance materials such as aluminum



Cold welding, or contact welding, is a solid-state welding process that requires little or no heat or fusion to join two or more metals together. Instead, the energy used for creating a weld comes in the form of pressure. During the cold welding process, unlike with fusion welding processes, no liquid or molten phase is present in the joint as can be seen in other techniques including arc



A adopts the latest energy-gathered pulse welding technology, it has a great welding power, the welding spot is nice and elegant, ensuring you a reliable welding effect. 3. The maximum welding power of the machine can be up to 10.6 KW meeting the needs for large-batteries welding.



Moreover, it's easy to customize a well-designed cold welding machine. Besides the aesthetic, designing an efficient cold welder, also helps you protect against multiple unhappy events. Size. Size is another worth considering factor while buying a new machine. But, in the case of a cold welding machine, it's not a big headache.

# ENERGY STORAGE COLD WELDING MACHINE VIDEO



Cold welding, or contact welding, is a solid-state welding process that requires little or no heat or fusion to join two or more metals together. Instead, the energy used for creating a weld comes ???



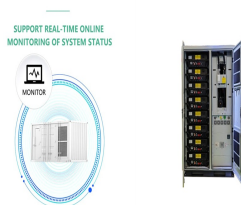
This energy storage stud welding machine provides a reliable guarantee for the stability of welding quality. The input is a single-phase 220v AC three-wire system, and the wide voltage input is flexible in application, easy to move and high welding efficiency. Item No.: RSR-4000: Power Frequency 50Hz: Functions:



China leading provider of Spot Welding Machines and Energy Storage Welder, Shanghai Trintfar Intelligent Equipment Co., Ltd. is Energy Storage Welder factory. English Video Technical Support . Contact Now. Drums Steel Drum Welding Production Line Seam Welding Equipment. Speed: 2~10pcs/min



Product Description. Product Features. The newly designed U.S. Solid USS-BSW00005 high-frequency inversion battery spot welder equips with the two super capacitors for energy storage and power supply for pulse welding. Unlike traditional AC transformer spot welders, it is more portable and it does not cause any interference to the electric circuit, eliminating tripping ???



Product Description. Product Features. The newly designed U.S. Solid USS-BSW00007 high-frequency inversion battery spot welder equips with the two super capacitors for energy storage and power supply for pulse welding. Unlike traditional bulky AC transformer spot welders, it is more portable and it does not cause any interference to the electric circuit, eliminating tripping ???

# ENERGY STORAGE COLD WELDING MACHINE VIDEO



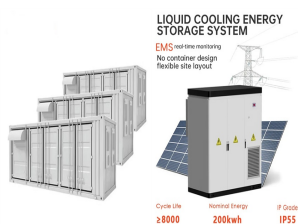
Video. Battery Pack Assembly Line Video; Cylindrical Cell Production Line Video; Prismatic Cell & Pouch Cell Manufacturing Line; Precision Energy Storage DC Spot Welding Machine. Model Number: TMAX-HDP-3000; Dimension(L\*W\*H): 900\*700\*1300mm; Net Weight: 60kg; Compliance: CE Certified; Warranty:



U.S. Solid SKU: JFBSW00005 UPC: 888107100379 Condition: New Availability: Usually ships within 24 hours. Width: 8.90 (in) Height: 7.50 (in) Depth: 6.70 (in) Google product category: Hardware > Tools Product Description The newly designed U.S. Solid battery spot welder is equipped with two super capacitors for energy storage and power supply for pulse welding.



What is the capacitor energy storage pulse welding machine? The U.S. Solid newly designed and patented USS-BSW series product are equipped with multiple super capacitors for energy storage and power supply for pulse welding. Comparing to the traditional AC transformer spot welders, it is more powerful, stable and portable.



???Intelligent adjustment???Screen Digital intelligent display,storage store the welding parameters,parameter capable for adjustment when welding ???Energy saving???Small size, long life, easy to carry, external foot switch ANDELI 180Amp Cold Welding Machine 110V/220V, Intelligent Precision Cold Welder With IGBT Digital Inverter, TIG



Cold welding machines represent a specialized technology designed to join metals without the need for heat. This process leverages pressure to fuse materials at a molecular level, a method that stands in contrast to traditional welding techniques that rely on melting and cooling phases. The principle behind cold welding is simple yet profoundly

# ENERGY STORAGE COLD WELDING MACHINE VIDEO

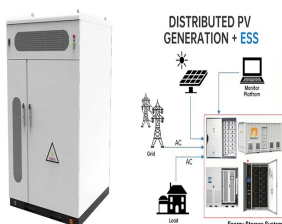
114KWh ESS



Key Takeaways. Cold welding is a solid-state process that joins metals without heat, relying on high pressure to create strong metallurgical bonds.; Cold welding requires meticulous preparation, as the metal surfaces must be clean and free of oxide layers to ensure a strong bond.; Cold welding is particularly valuable in industries like aerospace and electronics, ???



Here's your chance to learn all about it! Cold welding machines are incredibly useful in the manufacturing sector, providing unparalleled fast and efficient operations. For these purposes, the elements required are solid state bonding machines of high energy density or ultrasonic welder machines instead of conventional welding machines.



4 Functions of Laser Welding Machine. Laser Welding: With a laser welding torch, it is a laser welding machine that can weld aluminum, stainless steel, titanium, gold, silver, copper, nickel, chromium and other metals or alloys, and can also be applied to various welding metals between different materials, such as titanium-gold, copper-brass, nickel-copper, titanium-molybdenum, ???



By minimizing thermal deformation and maximizing bonding efficacy, the right energy storage solution enables cold welding machines to perform effectively across various applications. 1. CAPACITORS. Capacitors are essential components in the realm of cold welding machines, facilitating the efficient storage and release of electrical energy.



Cold Welding Machines. Using a cold welding machine, you can cold-pressure weld the majority of non-ferrous ductile metals. These devices can work with wires and rods as thin as 0.5 mm and as thick as 15 mm. For smaller wire diameters, a hand-operated cold welding machine can be used, and for larger wire diameters, pneumatic or electric

# ENERGY STORAGE COLD WELDING MACHINE VIDEO

---



Product Description. Product Features. The newly designed U.S. Solid USS-BSW00004 high-frequency inversion battery spot welder equips with the two super capacitors for energy storage and power supply for pulse welding. Unlike traditional AC transformer spot welders, it is more portable and it does not cause any interference to the electric circuit, eliminating tripping ???



How a Cold Welding Machine Works. A cold welding machine is a device used to bond two metal surfaces without the use of heat. The process involves applying pressure to the metal surfaces until they fuse and create a joint.