

ENERGY STORAGE CONTAINER STRUCTURE SIMULATION



Here, experimental and numerical studies on the gas explosion hazards of container type lithium-ion battery energy storage station are carried out. In the experiment, the LiFePO₄ battery module of 8.8kWh was overcharged to thermal runaway in a real energy storage container, and the combustible gases were ignited to trigger an explosion. The



China's rapid economic development and rising energy consumption have led to significant challenges in energy supply and demand. While wind and solar energy are clean alternatives, they do not always align with the varying energy needs across different times and regions. Concurrently, China produces substantial amounts of industrial waste heat annually. ???



The energy storage mathematical models for simulation and comprehensive analysis of power system dynamics: A review. The main elements of this structure are: a three-phase bidirectional DC-AC converter; DC link capacitor; communication interface between the energy storage device and the DC circuit, the topology of which depends on the



In this work, a new modular methodology for battery pack modeling is introduced. This energy storage system (ESS) model was dubbed hanalike after the Hawaiian word for "all together" because it is unifying various models proposed and validated in recent years. It comprises an ECM that can handle cell-to-cell variations [34, 45, 46], a model that can link ???



Energy system simulation (ESS) that includes simulation software such as Dymola, TRNSYS, Matlab/Simulink; allows heat or cold to be used later. Energy storage can be divided into many categories, but this article focuses on thermal energy storage because this is a key technology in energy systems for conserving energy and increasing energy

ENERGY STORAGE CONTAINER STRUCTURE SIMULATION



The safety measures and placement spacing of energy storage containers have an essential impact on combustion and explosion development and diffusion. Herein, the impact of changes in shock wave pressure and flame propagation speed on the safety of energy storage containers was revealed by changing the ignition position and



Optimal internal structure and layout enhance system heat transfer performance. [14] studied the melting and solidification behavior of PCM in a non-direct contact heat storage container using numerical simulation, analyzing factors that influence the system's charging and discharging times. provided an overview of containers used in



Tolerance in bending into a certain curvature is the major mechanical deformation characteristic of flexible energy storage devices. Thus far, several bending characterization parameters and various mechanical methods have been proposed to evaluate the quality and failure modes of the said devices by investigating their bending deformation status and received strain.



This work focuses on the heat dissipation performance of lithium-ion batteries for the container storage system. The CFD method investigated four factors (setting a new air inlet, air inlet ???



Large-scale Energy Storage Systems (ESS) based on lithium-ion batteries (LIBs) are expanding rapidly across various regions worldwide. and wind velocity fields were employed to assess the gas explosion hazards to ESS container structure and surroundings. The results demonstrate that altering the vent door pressure, without the top vent

ENERGY STORAGE CONTAINER STRUCTURE SIMULATION

114KWh ESS



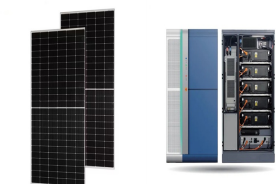
thermal design of a container energy storage battery pack Energy Storage Science and Technology :1858-1863. [3] Yang K, Li D H, Chen S and Wu F 2008 Thermal model of batteries for electrical vehicles



The ESS studied in this paper is a 40 ft container type, and the optimum operating temperature is 20 to 40 °C [36], [37]. Li-ion batteries are affected by self-generated heat, and when the battery temperature is below 20 °C, the battery charge/discharge performance is significantly reduced [36], [37] temperature conditions above 40 °C, Li-ion batteries are at ???



Featuring phase-change energy storage, a mobile thermal energy supply system (M-TES) demonstrates remarkable waste heat transfer capabilities across various spatial scales and temporal durations, thereby effectively optimizing the localized energy distribution structure???a pivotal contribution to the attainment of objectives such as "carbon peak" and ???



liquid fraction, energy transferred and momentum. Simulation outputs are commonly used to design the internal structure of the storage tank so that its heat transfer efficiency is improved. However, 3???D models require not only high???performance computing, but also large simulation times. Two???dimensional (2???D) and one???dimensional (1???D

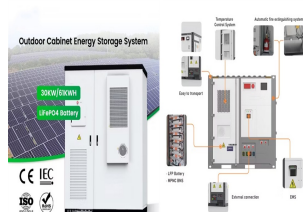


In this paper, the heat dissipation behavior of the thermal management system of the container energy storage system is investigated based on the fluid dynamics simulation method. The results of the effort show that poor airflow organization of the cooling air is a significant influencing factor leading to uneven internal cell temperatures.

ENERGY STORAGE CONTAINER STRUCTURE SIMULATION



3.7se of Energy Storage Systems for Peak Shaving U 32 3.8se of Energy Storage Systems for Load Leveling U 33 3.9ogrid on Jeju Island, Republic of Korea Micr 34 4.1rice Outlook for Various Energy Storage Systems and Technologies P 35 4.2 Magnified Photos of Fires in Cells, Cell Strings, Modules, and Energy Storage Systems 40



As LIB energy storage containers are increasingly used and expanded to high-altitude areas, it is crucial to understand the fire characteristics of these containers under different ambient pressures. The model structure and its specific size information can be seen in Fig. 2 (a). The simulation of the heat release rate of the LIB pack



DOI: 10.1016/J.ENCONMAN.2018.09.070 Corpus ID: 105934695;
Mobilized thermal energy storage: Materials, containers and economic evaluation @article{Guo2018MobilizedTE, title={Mobilized thermal energy storage: Materials, containers and economic evaluation}, author={Shaopeng Guo and Qibin Liu and Jun Zhao and Guang Jin and Wenfei Wu and ???



In this work is established a container-type 100 kW / 500 kWh retired LIB energy storage prototype with liquid-cooling BTMS. The prototype adopts a 30 feet long, 8 feet wide and 8 feet high container, which is filled by 3 battery racks, 1 combiner cabinet (10 kW x 10), 1 Power Control System (PCS) and 1 control cabinet (including energy



Cold-storage containers are widely used in cold-chain logistics transportation due to their energy saving, environmental protection, and low operating cost. The uniformity of temperature distribution is significant in agricultural-product storage and transportation. This paper explored temperature distribution in the container by numerical simulation, which included ???

ENERGY STORAGE CONTAINER STRUCTURE SIMULATION



The main objectives of this paper are to seek for an optimized structure of direct/indirect energy storage container in the M-TES system, and to study the structure???performance relationship between the structure of direct/indirect energy storage container and heat transfer rate and charge/discharging energy efficiency of the M-TES system



From several decades, phase change materials (PCMs) are playing a major role in management of short and medium term energy storage applications, namely, thermal energy storage [1,2,3], building conditioning [4,5,6,7], electronic cooling [8, 9], telecom shelters, to name a few. A major drawback of the PCMs is their poor thermal conductivity.



The "three-peak" structure outside the container was primarily influenced by the maximum external explosion a three-dimensional explosion-venting simulation model of energy storage containers with multiple vent structures was developed using CFD technology, based on the actual ESS container structure. A systematic study was conducted on



The numerical simulation of a container type energy storage system velocity field and temperature field were carried out, according to standard k- model, D-O radiation model and lithium battery ???

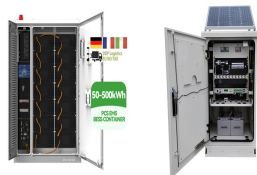


The Challenge. Fueled by an increasing desire for renewable energies and battery storage capabilities, many Utilities are considering significantly increasing their investments in battery energy storage systems (BESS), which store energy from solar arrays or the electric grid, and then provide that energy to a residence or business. This increase in ???

ENERGY STORAGE CONTAINER STRUCTURE SIMULATION



??? CFD modelling and simulation of Thermal Energy Storage using Phase Change Material. ??? Gallium is used as Phase Change Material due to its high thermal conductivity than paraffin. ??? The design with fins gives higher heat transfer rate with optimized number of ???



As people pay attention to health and food safety, food storage and transportation play an increasingly important role in maintaining the quality of food, fruits and vegetables, drugs and so on in production, transportation, storage and consumption [1] the process of food cold chain transportation, due to the lack of continuous power supply, the ???



The energy storage rate and temperature uniformity can be improved by changing the inclination angle, geometric structure, and relative position of the heat transfer fluid (HTF) in the energy storage enclosure [4]. This approach has gained research attention due to its ability to enhance performance without alterations to the container's volume