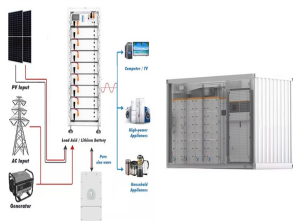
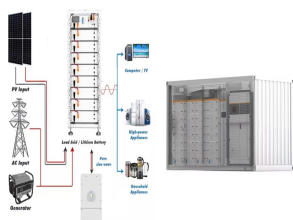


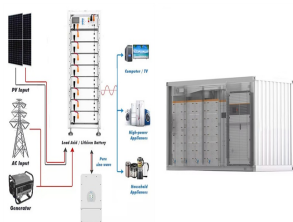
ENERGY STORAGE DEVICE FOR AUTOMOTIVE ELECTRICAL EQUIPMENT



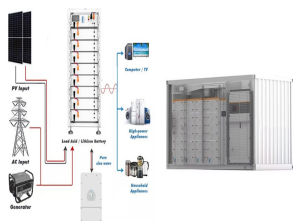
Which energy storage sources are used in electric vehicles? Electric vehicles (EVs) require high-performance ESSs that are reliable with high specific energy to provide long driving range . The main energy storage sources that are implemented in EVs include electrochemical,chemical,electrical,mechanical,and hybrid ESSs,either singly or in conjunction with one another.



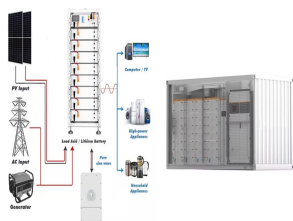
Which energy storage systems are suitable for electric mobility? A number of scholarly articles of superior quality have been published recently,addressing various energy storage systems for electric mobility including lithium-ion battery,FC,flywheel,lithium-sulfur battery,compressed air storage,hybridization of battery with SCs and FC ,,,,,,.



What are energy storage technologies for EVs? Energy storage technologies for EVs are critical to determining vehicle efficiency,range,and performance. There are 3 major energy storage systems for EVs: lithium-ion batteries,SCs,and FCs. Different energy production methods have been distinguished on the basis of advantages,limitations,capabilities,and energy consumption.

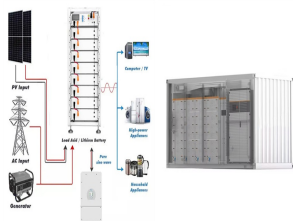


What are energy storage systems? Energy storage systems are devices, such as batteries, that convert electrical energy into a form that can be stored and then converted back to electrical energy when needed 2, reducing or eliminating dependency on fossil fuels 3. Energy storage systems are central to the performance of EVs, affecting their driving range and energy efficiency 3.

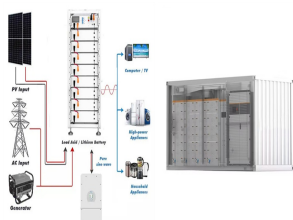


Which storage systems are used to power EVs? The various operational parameters of the fuel-cell,ultracapacitor,and flywheelstorage systems used to power EVs are discussed and investigated. Finally,radar based specified technique is employed to investigate the operating parameters among batteries to conclude the optimal storage solution in electric mobility.

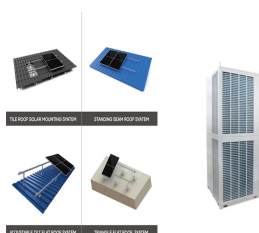
ENERGY STORAGE DEVICE FOR AUTOMOTIVE ELECTRICAL EQUIPMENT



What are the characteristics of energy storage system (ESS)? Use of auxiliary source of storage such as UC, flywheel, fuelcell, and hybrid. The desirable characteristics of an energy storage system (ESS) to fulfill the energy requirement in electric vehicles (EVs) are high specific energy, significant storage capacity, longer life cycles, high operating efficiency, and low cost.



The battery is an energy storage device that enables energy from renewable resources like solar and wind to be stored and released when the customer is in need. It is possible to store the energy in the form of the ???



Electrochemical energy storage and conversion systems such as electrochemical capacitors, batteries and fuel cells are considered as the most important technologies proposing environmentally friendly and sustainable ???



Making energy storage devices into easily portable and curved accessories, or even weaving fibers into clothes, will bring great convenience to life. Carlson et al. [88] designed ???



Energy storage systems play a crucial role in the overall performance of hybrid electric vehicles. Therefore, the state of the art in energy storage systems for hybrid electric vehicles is discussed in this paper along ???

ENERGY STORAGE DEVICE FOR AUTOMOTIVE ELECTRICAL EQUIPMENT



GE is known for its involvement in various energy storage projects, particularly when it comes to grid-scale battery storage solutions. It continues to be at the forefront of developing and deploying advanced energy storage ???



Information about the company's automotive electrical equipment. Automotive Electrical Equipment. Toyo Denki's power electronics technology is contributing to advances in high-efficiency permanent magnet-type motors and control ???



There are, in fact, several devices that are able to convert chemical energy into electrical energy and store that energy, making it available when required. Capacitors are energy storage devices; they store electrical energy ???



Figure 9: Connection possibilities of power electronics-based energy storage devices in an AC electric power system. Internet-enabled technologies. Power electronics-based energy storage devices using industrial ???



Use of auxiliary source of storage such as UC, flywheel, fuelcell, and hybrid. The desirable characteristics of an energy storage system (ESS) to fulfill the energy requirement in ???

ENERGY STORAGE DEVICE FOR AUTOMOTIVE ELECTRICAL EQUIPMENT



The global electric car fleet exceeded 7 million battery electric vehicles and plug-in hybrid electric vehicles in 2019, and will continue to increase in the future, as electrification is an important means of decreasing the greenhouse gas ???



A flywheel, in essence is a mechanical battery - simply a mass rotating about an axis. Flywheels store energy mechanically in the form of kinetic energy. They take an electrical input to accelerate the rotor up to speed by ???



They may also be useful as secondary energy-storage devices in electric vehicles because they help electrochemical batteries level load power. Recycling Batteries. Electric vehicles are relatively new to the U.S. auto market, so only ???



Energy storage device testing is not the same as battery testing. There are, in fact, several devices that are able to convert chemical energy into electrical energy and store that energy, making it available when required.



Energy Storage Solution. Delta's energy storage solutions include the All-in-One series, which integrates batteries, transformers, control systems, and switchgear into cabinet or container solutions for grid and C&I applications. The ???