

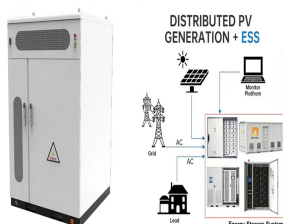
# ENERGY STORAGE FIELD SCALE CALCULATION



How is energy storage capacity calculated? The energy storage capacity,  $E$ , is calculated using the efficiency calculated above to represent energy losses in the BESS itself. This is an approximation since actual battery efficiency will depend on operating parameters such as charge/discharge rate (Amps) and temperature.



What is a battery energy storage system? A battery energy storage system (BESS) is an electrochemical device that charges from the grid or a power plant and then discharges that energy to provide electricity or other grid services when needed.



How do you calculate battery efficiency? Efficiency is the sum of energy discharged from the battery divided by sum of energy charged into the battery (i.e., kWh in/kWh out). This must be summed over a time duration of many cycles so that initial and final states of charge become less important in the calculation of the value.



What is the optimal configuration of energy storage capacity? The optimal configuration of energy storage capacity is an important issue for large scale solar systems. a strategy for optimal allocation of energy storage is proposed in this paper. First various scenarios and their value of energy storage in PV applications are discussed. Then a double-layer decision architecture is proposed in this article.

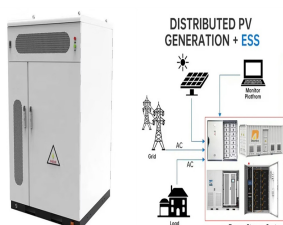


What is the investment cost of energy storage system? The investment cost of energy storage system is taken as the inner objective function, the charge and discharge strategy of the energy storage system and augmentation are the optimal variables. Finally, the effectiveness and feasibility of the proposed model and method are verified through case simulations.

# ENERGY STORAGE FIELD SCALE CALCULATION



What is the difference between rated power capacity and storage duration? Rated power capacity is the total possible instantaneous discharge capability of a battery energy storage system (BESS), or the maximum rate of discharge it can achieve starting from a fully charged state. Storage duration, on the other hand, is the amount of time the BESS can discharge at its power capacity before depleting its energy capacity.



This paper analyzes the differences between the power balance process of conventional and renewable power grids, and proposes a power balance-based energy storage capacity ???



In electrical energy storage science, "nano" is big and getting bigger. One indicator of this increasing importance is the rapidly growing number of manuscripts received and papers published by ACS Nano in the general ???



EnSights has launched a tool for calculating the optimal sizing of battery energy storage system (BESS) projects. "We developed our storage calculator to not only mitigate these risks for decision-makers but to make ???



This significantly expands the potential applications of ferroelectric materials in the field of energy storage. Figure 5c illustrates a device schematic for capacitive geometry based on flexible ferroelectric thin film systems, ???

# ENERGY STORAGE FIELD SCALE CALCULATION

---



Abstract: The optimal configuration of energy storage capacity is an important issue for large scale solar systems. a strategy for optimal allocation of energy storage is proposed in this ???



The interest in modeling the operation of large-scale battery energy storage systems (BESS) for analyzing power grid applications is rising. This is due to the increasing storage capacity installed in power systems for ???



Topic: Multi-scale calculation and design of electrochemical energy storage materials. Lecturer: Prof. Shi Siqi. Time: 10:00 am, Thursday, December 3, 2020. Place: Room 343, Teaching ???



In the Equation (),  $A_m B_n$  is a compound;  $m$  and  $n$  are the number of  $A$  and  $B$  in the formula;  $E(A_m B_n)$ ,  $E(A)$ , and  $E(B)$  are the energies of compound  $A_m B_n$ , isolated atom  $A$ , and isolated atom  $B$ , respectively; and  $E_{co}$  is the cohesive ???