

# ENERGY STORAGE LAMP WIRING METHOD VIDEO



energy storage lamp wiring. IS001 Battery Energy Storage System Setup and Usage Guide. How to Wire an Energy Storage System: A Step-by-Step Guide . In this video tutorial, we will guide you through the process of wiring an energy storage system. This step-by-step guide is designed for beginners and will



If needed, the wire can be tacked down later with a large staple. Starting at the bottom, thread your lamp wire up through your lamp. You may find it easier to tape the ends together. I have also seen a wire inserted from the top, wrapped around the lamp cord and the cord pulled through the lamp.



9 ? Clean with a mixture of baking soda and water if needed. Test Voltage: Use a multimeter to check voltage at the battery bank. The readings should reflect the intended ???



Photo 5. Rule 12-3032(4) allows installation of wiring associated with instrument transformers and energy usage metering devices in enclosures for overcurrent devices, etc. A new subrule has been added to Rule 12-3000 requiring the bonding of metal fittings used to terminate a non-metallic wiring methods to a non-metallic boxes (photo 3).



On the other hand, concealed wiring is the most popular and common method of wiring the residential buildings. The conduit wiring is the safest method of wiring and also looks beautiful (concealed conduit wiring). Lead Sheathed Wiring. This wiring method is also similar the CTS / TRS Wiring except for the type of wire / cable.

# ENERGY STORAGE LAMP WIRING METHOD VIDEO



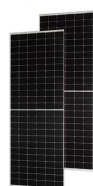
Wiring methods permitted in Class I, Division 1 locations are identified in Sections 501.10(A) and include threaded rigid metal or threaded steel intermediate conduit. Use of certain types of non-metallic conduit in underground installations evolved from permission for use in bulk storage facilities in the 1950s to an exception that



If you don't already have solar yet, you could potentially save thousands of dollars on a new solar plus storage system by going with a DC-coupled setup, which only involves one inverter and is



But we are still far from comprehensive solutions for next-generation energy storage using brand-new materials that can dramatically improve how much energy a battery can store. This storage is critical to integrating renewable energy sources into our electricity supply. Because improving battery technology is essential to the widespread use of



What is Electrical Wiring?. Different Types of Electrical Wiring Systems. Cleat Wiring Methods of Electrical Wiring Systems w.r.t Taking Connection. Joint Box or Tee or Jointing System. Loop-in or Looping System. Casing and Capping wiring Batten Wiring (CTS or TRS) Lead Sheathed Wiring Conduit Wiring Surface Conduit Wiring Concealed Conduit wiring Types of ???



The wiring method ensures an even distribution of energy or power load among the devices. Application of Parallel Wiring in Heating Elements Parallel wiring has many applications for heating elements, including cooktops, ovens, and other equipment that require a controlled amount of heat or electricity to function efficiently.

# ENERGY STORAGE LAMP WIRING METHOD

## VIDEO



Technical Guide ??? Battery Energy Storage Systems v1. 4 . o Usable Energy Storage Capacity (Start and End of warranty Period). o Nominal and Maximum battery energy storage system power output. o Battery cycle number (how many cycles the battery is expected to achieve throughout its warranted life) and the reference charge/discharge rate .



Second, you need to be able to distribute equal voltage to every single fixture in your landscape lighting system, and that takes a well-planned wiring method. The only wiring method that can get equal voltage to every fixture is an equalized hub method of wiring. This method requires equal lengths of wire on all fixtures leading to a central



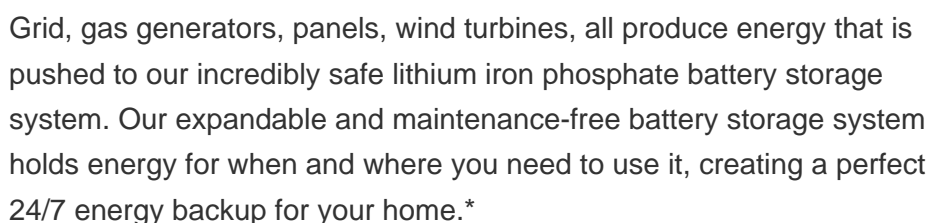
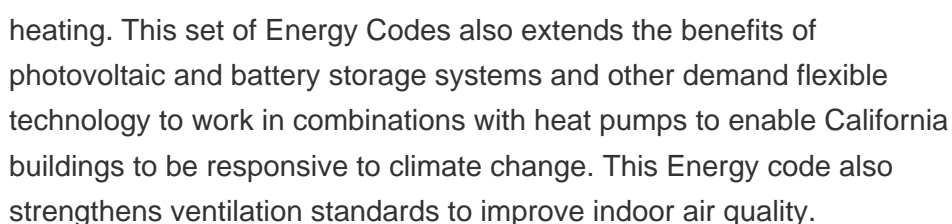
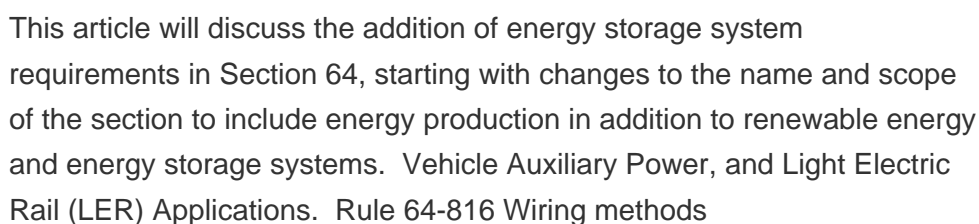
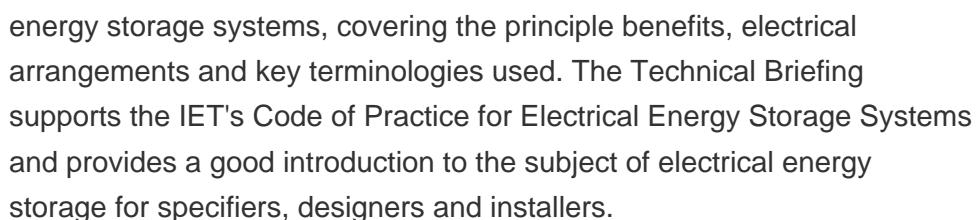
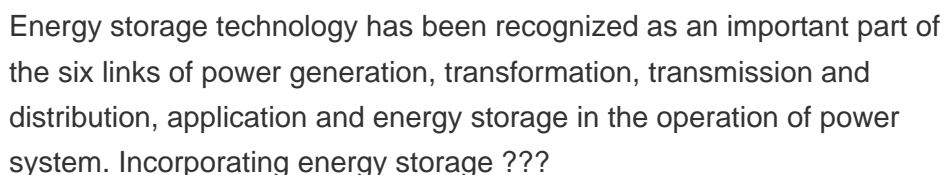
The allowable wiring methods for electrical installations shall be those listed in Table E3801.2. Single conductors shall be used only where part of one of the recognized wiring methods listed in Table E3801.2. As used in this code, abbreviations of the wiring-method types shall be as indicated in Table E3801.2. [110.8, 300.3(A)]



Different sensors may require different voltage levels, wire sizes, or grounding methods. Without proper wiring, the sensor may not function at all or may cause damage to the electrical system. Accuracy: Correct wiring is essential for accurate detection and response. Occupancy sensors rely on changes in electrical current to detect motion or



1. Fluorescent lamp wiring 2. Stair case wiring 3. Measurement of electrical quantities-voltage current, power & power factor in RLC circuit 4. Residential house wiring using fuse, switch, indicator, lamp and energy meter 5. Measurement of energy using single phase energy meter 6. Measurement of resistance to earth of electrical equipment



# ENERGY STORAGE LAMP WIRING METHOD

## VIDEO



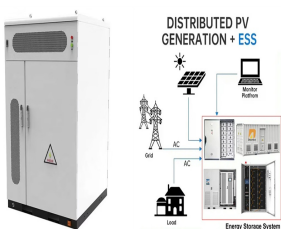
BUILDING ENERGY CODES PROGRAM BUILDING ENERGY CODES PROGRAM PNNL-SA-132937 fitted for and include high-efficacy lamps ??? Walk-in coolers, walk- in freezers, refrigerated warehouse coolers, and stage, film, and video production Used for photographic processes Integral to equipment or instrumentation installed by



PV equipment floating on or attached to structures floating on bodies of water must be identified as being suitable for the purpose and have wiring methods that allow for expected movement of the equipment [690.4(G)]. PV equipment on bodies of water are subject to increased levels of humidity, corrosion, and mechanical and structural stresses.



Energy Storage in an Electric Circuit. Figure 1 shows an elementary RLC circuit. Figure 1. Elementary RLC circuit. Image used courtesy of Lorenzo Mari . Wiring always has inductance and capacitance associated with it ??? these elements store energy. The capacitor will charge when the switch is open, storing electric energy.

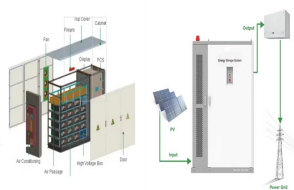


How to Wire a Light Switch using Single Pole Switch (AKA One Way (IEC) or 2-Way (NEC)? In today's basic home electrical wiring installation tutorial, we will show how to wire a single-pole light switch to control a light point using a one-way or single-way switch. The terms "two-way" and "single-pole" are used interchangeably for the same type of switch in the US and Canada.



The allowable wiring methods for electrical installations shall be those listed in Table E3801.2. Single conductors shall be used only where part of one of the recognized wiring methods listed in Table E3801.2. As used in this code, abbreviations of the wiring-method types shall be as indicated in Table E3801.2. [110.8 and 300.3(A)]

# ENERGY STORAGE LAMP WIRING METHOD VIDEO



The U.S. Department of Energy's Water Power Technologies Office enables research, development, and testing of emerging technologies to advance marine energy as well as next-generation hydropower and pumped storage systems for a flexible, Subscribe to The Water Wire The WPTO e-newsletter brings funding opportunities, events, publications



Read on for a very in-depth look at what is involved in the electrical wiring process and what you need to know when working with the wiring in your home. Methods of Electrical Wiring. There are different methods of electrical wiring which include joint box or joining system and loop-in or looping system. The method you choose should be



However, per 504.20, intrinsically safe circuits may be installed using any wiring method allowed by the NEC? for unclassified locations. Similarly, per 501.4(B)(3), 502.4(B)(3) and 505.15(C)(1)(g), nonincendive field wiring circuits can also be installed using unclassified location wiring methods.



Download scientific diagram | Battery energy storage system circuit schematic and main components. from publication: A Comprehensive Review of the Integration of Battery Energy Storage Systems