

ENERGY STORAGE PACK BOX REQUIREMENTS



What are the safety requirements for electrical energy storage systems? Electrical energy storage (EES) systems - Part 5-3. Safety requirements for electrochemical based EES systems considering initially non-anticipated modifications, partial replacement, changing application, relocation and loading reused battery.



What are the requirements for energy storage systems? The requirements for energy storage systems, as stated in article 706, apply to all permanently installed systems operating at over 50 V AC or 60 V DC. These systems may be stand-alone or interactive with other electric power production sources. Currently, these are the conditions outlined in the article.



What is a battery energy storage system (BESS)? By definition, a Battery Energy Storage Systems (BESS) is a type of energy storage solution, a collection of large batteries within a container, that can store and discharge electrical energy upon request.



What is the scope of energy storage system standards? The scope of energy storage system standards includes both industrial large-scale systems and domestic battery energy storage systems (BESSs). Appendix 1 includes a summary of applicable international standards for domestic battery energy storage systems (BESSs).



What are the standards for battery energy storage systems (BESS)? As the industry for battery energy storage systems (BESS) has grown, a broad range of H&S related standards have been developed. There are national and international standards, those adopted by the British Standards Institution (BSI) or published by International Electrotechnical Commission (IEC), CENELEC, ISO, etc.

ENERGY STORAGE PACK BOX REQUIREMENTS



Are domestic battery energy storage systems safe? Despite a limited number of known incidents with domestic battery energy storage systems (BESSs) in the public domain, questions have been raised regarding their safety due to the large energy content within these systems.



Battery venting is a critical safety feature in batteries that prevents the build-up of pressure and gas. Different types of batteries, like lead-acid and lithium-ion, have unique venting designs and requirements. Venting is essential in managing ???



Iron Phosphate (LFP) square aluminium-cased battery cell, with a nominal capacity of 52.2496kWh and a nominal voltage of 166.4V. The operating voltage range is 140.4V to 187.2V. Internal parts and other accessories within the cluster.



There are various factors for selecting the appropriate energy storage devices such as energy density (Wh/kg), power density (W/kg), cycle efficiency (%), self-charge and discharge characteristics, and life cycles (Abumeteir and Vural, 2016). The operating range of various energy storage devices is shown in Fig. 8 (Zhang et al., 2020). It



Technical Guide ??? Battery Energy Storage Systems v1. 4 . o Usable Energy Storage Capacity (Start and End of warranty Period). o Nominal and Maximum battery energy storage system power output. o Battery cycle number (how many cycles the battery is expected to achieve throughout its warrantied life) and the reference charge/discharge rate .

ENERGY STORAGE PACK BOX REQUIREMENTS



There are several types of batteries for energy storage, including lead-acid, lithium-ion, and flow batteries. Each has its advantages and drawbacks. Lithium-ion batteries are currently the most popular choice for energy storage due to their high energy density, long cycle life, and relatively low maintenance requirements.



Unlocking the potential for diverse energy projects, the mtu EnergyPack QG is designed and optimized to suit your specific needs based on standardized modules. Picture 1 showcases an exemplary first variant based on battery racks, ideal for systems below 50 MW, while Picture 2 illustrates an exemplary second variant based on battery containers, perfect for large-scale ???



also sets the maximum energy storage threshold for each energy storage technology. For example, for all types of energy storage systems such as lithium-ion batteries and flow batteries, the upper limit of storage energy is 600 kWh, and all lead-acid batteries have no upper limit. The requirements of NFPA 855 also vary depending on



levels of renewable energy from variable renewable energy (VRE) sources without new energy storage resources. 2. There is no rule-of-thumb for how much battery storage is needed to integrate high levels of renewable energy. Instead, the appropriate amount of grid-scale battery storage depends on system-specific characteristics, including:



Energy Storage Systems. 2 mariofi +358 (0)10 6880 000 White paper Example of battery pack characteristics with three cells of 3.6 V and 2 Ah. NFPA 855: Key design parameters and requirements for the protection of ESS with Li-ion batteries. Table 4. FM Global DS 5-32 and 5-33: Key design parameters for the protection of ESS and data

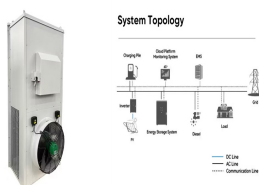
ENERGY STORAGE PACK BOX REQUIREMENTS



procedural frameworks and substantive requirements for residential, commercial, and utility-scale battery energy storage systems. ??? Battery Energy Storage System Model Permit (Model Permit): The Model Permit is intended energy storage system planning goals and actions, and develop local laws and/or other regulations to ensure the



Energy Storage Pack YXYP-52314-E Liquid-Cooled Energy Storage Pack The battery module PACK consists of 52 cells 1P52S and is equipped with internal BMS system, high volt-age connector, liquid cooling plate module, fixed structural parts, fire warning module and other ac-cessories. The battery module has over-voltage,



Battery energy storage plays an essential role in today's energy mix. As well as commercial and industrial applications battery energy storage enables electric grids to become more flexible and resilient. It allows grid operators to store ???



energy industry and a complete flow of connection application solutions from power generation and energy storage to charging. We also provide customized connection solutions for charging stations, high-voltage control cabinets, and energy-storage and communication power supplies. At TE, we are dedicated to providing you with professional,



Discover the Energy Storage Battery PACK Comprehensive Guide. Learn about production, components, characteristics & future prospects. For example, when connecting two batteries in series or parallel and forming a specific shape according to customer requirements, it is referred to as a battery pack. Components of Battery PACK.

ENERGY STORAGE PACK BOX REQUIREMENTS



2 The battery energy storage system ____ 11 2.1 High level design of BESSs ____ 11 7.1.1 Electrical installation and grid connectivity requirements in UK ____ 32 7.1.2 Product safety and dangerous goods regulatory requirements ____ 32 ??? Excessive heat generated deep inside a battery pack as cells fail and thermal runaway



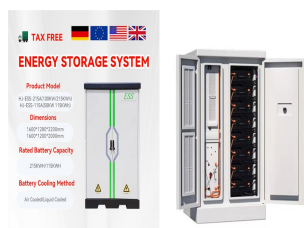
Energy Storage Systems are structured in two main parts. The power conversion system (PCS) handles AC/DC and DC/AC conversion, with energy flowing into the batteries to charge them or being converted from the battery storage into AC power and fed into the grid. Suitable power device solutions depend on the voltages supported and the power flowing.



Long-duration energy storage (LDES) is a key resource in enabling zero-emissions electricity grids but its role within different types of grids is not well understood. Using the Switch capacity



CATL's energy storage systems provide users with a peak-valley electricity price arbitrage mode and stable power quality management. CATL's electrochemical energy storage products have been successfully applied in large-scale industrial, commercial and residential areas, and been expanded to emerging scenarios such as base stations, UPS backup power, off-grid and ???



This document provides an overview of current codes and standards (C+S) applicable to U.S. installations of utility-scale battery energy storage systems. This overview highlights the most impactful documents and is not intended to be exhaustive.

ENERGY STORAGE PACK BOX REQUIREMENTS



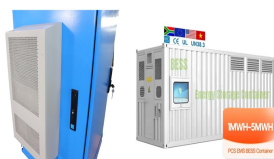
Modular battery energy storage system design factors analysis to improve battery-pack reliability. Taking the energy of the battery-pack as a design specification and assuming that a DC/DC converter will adapt the voltage level required by the application, the number of cells connected in series and in parallel is a decision that will need



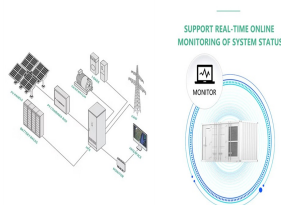
3.7se of Energy Storage Systems for Peak Shaving U 32 3.8se of Energy Storage Systems for Load Leveling U 33 3.9ogrid on Jeju Island, Republic of Korea Micr 34 4.1rice Outlook for Various Energy Storage Systems and Technologies P 35 4.2 Magnified Photos of Fires in Cells, Cell Strings, Modules, and Energy Storage Systems 40



BATTERY ENERGY STORAGE SYSTEMS (BESS) / ELECTRICAL PRODUCTS GUIDE 3 TE PROVIDES INDUSTRY-LEADING ELECTRICAL CONNECTION SOLUTIONS. More Than 60 Years of Experience in the Energy Industry TE helps you improve power allocation flexibility in various phases of the energy landscape, from power generation to power transmission and ???



By definition, a Battery Energy Storage Systems (BESS) is a type of energy storage solution, a collection of large batteries within a container, that can store and discharge electrical energy upon request. The system serves as a buffer ???



The mtu EnergyPack efficiently stores electricity from distributed sources and delivers on demand. It is available in different sizes: QS and QL, ranging from 200 kVA to 2,000 kVA, and from 312 kWh to 2,084 kWh, and QG for grid scale ???

