

# ENERGY STORAGE PET CABLE TIE



What is the best cable tie-out for dogs? Our pick: BV Pet Super Heavy XXL Tie Out Cable for Dogs. A cable tie-out is no good if it can't actually keep your dog secured, and when dealing with a pet that is big and strong, you need to choose a tether that can withstand sharp jaws and lots of pulling. For those dogs, a tie-out like this one has more potential to be strong enough.



What is a dog tie out cable & stake? The SCENEREAL Dog Tie Out Cable and Stake is designed for dogs weighing up to 250 pounds, which is a much higher weight capacity than most cables and stakes. The 10-foot cord has a PVC coating to prevent corrosion, and the sturdy buffer spring prevents neck injuries when the dog rushes toward a squirrel or rabbit.



What is a pestairs dog tie-out cable & stake? Unlike many of the spiral stakes, the Pestairs Dog Tie Out Cable and Stake sits flush with the ground, so you do not have to remove it when you mow the grass. The tie-out features a swivel head design that prevents tangles, and the heavy-duty carabiner clasp can resist pulling from massive dogs.



How does a dog tie out cable work? Each end of the tie-out has a spring hook, one of which is attached to your dog's harness and the other to a secured tether, like a runner or stake. Plus, the clips swivel, so your pet is less likely to tangle or get caught up in the cable. Pros Cons Our pick: BV Pet Super Heavy XXL Tie Out Cable for Dogs



Are dog tie out cables a good idea? Dog tie out cables can be your (other) best friends. Tie out cables (sometimes called dog yard leashes) typically give dogs more room to roam, and they allow you to contain your pup hands-free since they can attach to a structure or be secured to the ground.

# ENERGY STORAGE PET CABLE TIE



Can a dog tie out cable break free? The Petbobi is rated for large dogs, but several pet parents with dogs weighing under 50 pounds were able to break free. A few customers pointed out with photos that the cable has a defect where the metal is crimped. A heavy pull can cause the line to snap. 14. SCENEREAL Dog Tie Out Cable and Stake



This type of tie out cable is ideal for dogs who tend to pull or have a lot of energy, as it provides a strong and secure anchor point. However, it is important to regularly check the stake and cable for any signs of wear or damage to ensure the safety of your dog. Selecting the right length for your dog's tie out cable is essential to



a?JPYUPGRADED 45FT DOG TIE OUT CABLE: Under the advice of loyal customers, we upgraded the tension on the 45 ft cable, Upgrade the easily broken iron clips to stainless steel material clips for up to 150 LBS of XL dogs and tests on a stable ground i made from TPR coatings and 304 stainless steel cable, wear resistant, damping, resistance pull, It's



Enjoy hands-free outdoor activities with your dog & peace of mind with EveryYay's durable 20" tether cable & stake for medium dogs up to 50 lbs. - Includes a tie-out cable and spiral stake that's quick and easy to install to help keep even the most - Lightweight for easy transport and storage. Specifications. SKU. 3292328. Primary Brand



and longevity in an otherwise familiar-looking fastener design. The cable tie's unique material is responsible for its extended lifespan, making it the industry's first commercial-scale, plastic solar tie designed to last more than 25 years. Manufactured from polyvinylidene fluoride, or PVDF, this outdoor tie exhibits some of the highest UV,



It is a great exercise toy to allow high energy small/large dogs to expend excess energy result in calm and sleeps all night. Help with impulse control through training, exercise, and mental stimulation. Dog Tie Out Cable for Camping - 50ft Heavy Duty Overhead Trolley System and Dog

# ENERGY STORAGE PET CABLE TIE

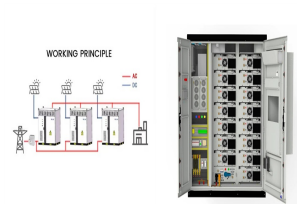
---

Rope Toys with a Big Spring Pole Kit for Dogs up to 200lbs

# ENERGY STORAGE PET CABLE TIE



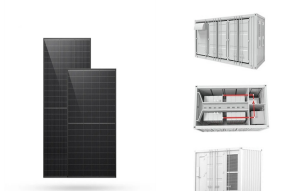
Determining Cable Tie Sizes. Choosing the right cable tie size is crucial. The selection is based on length and width, usually specified in inches or millimeters. Factors such as cable diameter, weight support, and environmental conditions influence the choice, ensuring proper bundling and preventing damage. Common Cable Tie Materials Nylon



Global supplier of energy storage system cables for advanced battery storage (BESS) installations for green energy and grid optimisations. Industry specialists - Technical support - Fast quote and fast delivery. Use our cable calculator to aid with cable sizing in accordance with British BS7671 and International IEC 60364-5-52 standards



Cable Tie Supplier, Terminal, Nail Cilp Manufacturers/ Suppliers - Shanghai Xinlong Plastic Manufacturing Co.,Ltd. PET Tube Cable Tie Contact Now. The Selected Suppliers You Might Like. Street Lighting Module Waterproof Connector Socket M15 2pin Wire Connector Energy Storage Connector & Cable, Circular Connectors & Cable, E-Motorcycle



Ensure your dog's safety with the Pet Shop Tie Out Stake & Cable. A great way to secure your dog outdoors. Ideal for keeping your dog secure and nearby while gardening, camping or for any other outdoor activity where you want your four-legged friend to roam. Simply insert stake into firm ground and attach the cable securely to your dog's lead



About this item . 30FT DOG TIE OUT CABLE:we upgraded the tension on the 30 ft cable,Upgrade the easily broken iron clips to stainless steel material clips for up to 150 LBS of XL dogs and tests on a stable ground i made from TPR coatings and 304 stainless steel cable,wear resistant,damping,resistance pull,It's a super chew proof dog lead, It resists the a?]

# ENERGY STORAGE PET CABLE TIE



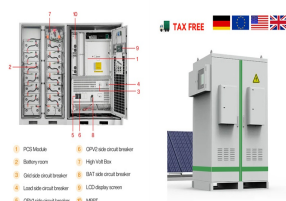
Petbobi 30ft Tie Out Cable for Dog with Durable Spring and Metal Swivel Hooks for Outdoor, Yard and Camping, Rust- Proof Training Tether for Small to Medium Dogs Up to 120 Pounds, Blue. a?|



Solid Dog Tie Out Cable: The dog tie out cable is 50 feet long, rigorously tested for dogs up to 250 lbs. Dogs are always full of energy, especially in yard or outdoor activities. A reliable tie out cable with shock absorbing spring to keep your pet safe so you no need to worry about pets alone! DETAILS OF TIE OUT CABLE .



With an anticipated 23% compounded annual growth rate and up to 88GW added annually globally through to 2030, battery energy storage solutions are being deployed at national, commercial, and domestic levels conjunction with renewable energy generation projects from solar, wind, hydro and biomass, and clean energy generation technologies such as green a?|



This pet tie-out cable will give your dog a lot of room to move around and sniff away to their heart's content. Product Details. Material: Wire: Steel; Hook: Iron; Cover: Polyvinyl chloride (PVC) Dimensions/Size: 10m (L) x 4.5cm (W) Colour: Silver; Features. 600lb tension capacity; For dogs up to 50kg; Vinyl-coated steel cable; Easy to clean



Petbobi Dog Tie Out Cable, 40ft Dog Tether for Yard, Camping, No Tangle Leash with Heavy Duty Buffer Spring, Chew Proof Wire Rope with PVC Coating, Suitable for Medium Large Dogs up to 120 LBS. \$16.99 \$ 16. 99. Get it as soon as Friday, Oct 18. In Stock. Sold by OAKZIP and ships from Amazon Fulfillment.

# ENERGY STORAGE PET CABLE TIE



2%. - Includes a tie-out cable and dome stake that's quick and easy to install to help keep even the most rambunctious pets secure- Built to last with durable- and weather-resistant a?|



Find HaiYUAN Dog Tie Out Cable 10/15/20/30FT Dog Run Cable Orange/Grey Tie Out Cable for Dogs with Durable Superior Clips Dog Cable for Large Dogs Heavy Duty for Outside Hold Large Dogs Up to 100LBS and more at Amazon . Skip to main content . Delivering to Nashville 37217 Update location



ft Dog Tie Out Cable with 10ft Runner Cable - Heavy Duty Long Dog Leash for Yard Training Camping Hiking Outside - Chew Proof Lead Trolley Cable with Buffer for Small Medium Large Dogs Silver and more at Amazon



HaiYUAN Dog Tie Out Cable 10/15/20/25/30FT Dog Runner for Yard Steel Wire Dog Cable with Durable Superior Clips Purple Dog Chains for Outside Dog Lead for Large Dogs Up to 165 lbs STURDY DOG TIE OUT CABLE:The HaiYUAN multi-functional, multi-size, ultra-tensile pull cable provides greater range of motion for dogs.



The SCENEREAL Dog Tie Out Cable and Stake is designed for dogs weighing up to 250 pounds, which is a much higher weight capacity than most cables and stakes. The 10-foot cord has a PVC coating to



The 50-foot Top Paw(R) Trolley Dog Tie Out is excellent for giving your dog a lot of freedom without worrying about a cable or lead dragging the ground. Along with the 50-foot cable comes a trolley system that suspends along the cable and attaches to a tie-out for your dog to move about as it

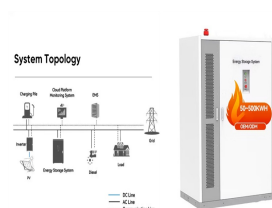
# ENERGY STORAGE PET CABLE TIE

---

pleases.



# ENERGY STORAGE PET CABLE TIE



Pet Accessories. Tie-Out clip storage box; Tie-Out Cable for Dogs, Multiple Lengths and Weight Ratings Available. Our tie out cables were designed with you and your pet in mind. The bright orange color makes the cable visible in your yard to prevent tripping or running over with the lawn mower. The cables are made of galvanized airline



The Heavy-Duty Dog Tie Out Cable is a great product for owners of large dogs who want to provide a safe and secure outdoor space for their pets. This extra strong wire cable is built to last and can support dogs up to 300lbs. The 10ft length of the cable gives your dog enough room to move around and explore their surroundings while also keeping



Find Duckygoo Dog Tie Out Cable Chew Proof, Heavy Duty Dog Leads for Large Dogs Up to 125lbs, Outdoor Long Dog Leash 30ft/50ft, Durable Dog Runner for Yard, Camping, Dog Line for Outside, Tether for Dogs Outside and more at Amazon Dogs are always full of energy, especially in yard or outdoor activities. A reliable tie out cable with shock



Inadequate or delayed post-treatment of cable ties; Natural oxidation during storage of cable ties; Water evaporation or high temperature can cause yellowing of cable ties; Incorrect storage conditions can also contribute to yellowing of cable ties; Use of improper or low-quality materials for production can affect the cable tie's strength



BV Dog Tie Out Cable 30 Feet - Dog Leads for Yard Heavy Duty - Up to 125 Pounds | Tie Out Cable for Dogs, Reflective Dog Lead, Dog Cable 30ft | Rust Free Dog Chain for Yard Outdoor (Red Pair) 1,798 \$27.99 \$ 27 . 99



Find XiaZ Dog Tie Out Cable, 150ft Dog Trolley Runner Cable for Dogs up to 250lbs, Dog Lead for Yard, Camping, Outdoor, with 8 Ft Nylon Bungee Runner, Cable Sling to Protect Trees and more at Amazon . They mention it works well and helps get the energy out of two high-energy



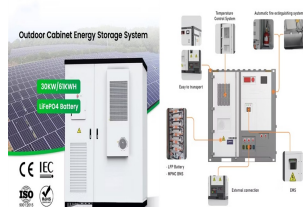
# ENERGY STORAGE PET CABLE TIE

---

dogs. Some say the cable works great, but their puppy chewed

# ENERGY STORAGE PET CABLE TIE

---



Comes with a metal stake to fix the cable tie-out for dogs into the ground. 15 ft. of cable gives your dog full freedom of movement. Cable is retractable for convenient storage. Ideal for pets a?|