

ENERGY STORAGE POWER STATION INDUSTRIAL LAND



The project is China's first 100-MWh-scale energy storage power station to utilize sodium-ion batteries. Developed and managed by Datang Hubei Energy Development, the project can store 100,000 kWh of electricity on a single charge, supplying power to approximately 12,000 households for an entire day.



energy storage facilities Serves ~4.3 million residential, commercial, and industrial customers via multiple brands in 19 states and the District of Columbia ~108 TWhs of load delivered annually Offers over 50 renewable energy and Morro Bay Power Plant: Land Use Restrictions



The project site (grid ref. SN 938 061) is located on industrial-zoned land currently occupied by an industrial building used for storage and distribution. The power station is due to enter commercial operation by October 2024. Hirwaun Power Station, a Drax Group development project, will help support Great Britain's energy security.

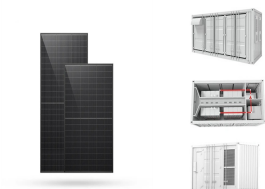


As the world moves towards renewable energy sources, battery storage is becoming an increasingly popular option for storing excess energy. This can be seen in the growing number of utility-scale battery storage projects being developed around the globe.If you are a landowner and are interested in getting involved in this industry, you may be wondering if ???

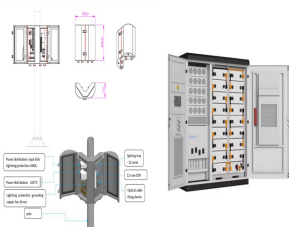


On March 31, the second phase of the 100 MW/200 MWh energy storage station, a supporting project of the Ningxia Power's East NingxiaComposite Photovoltaic Base Project under CHN Energy, was successfully connected to the grid. This marks the completion and operation of the largest grid-forming energy storage station in China.

ENERGY STORAGE POWER STATION INDUSTRIAL LAND



Much like leasing land for solar, leasing land for energy storage or solar-plus-storage (paired solar PV and battery storage) can benefit both landowners and the clean energy transition. For commercial or industrial-scale energy storage solutions that are simply serving on-site consumption, even less space is needed because of lower



Globally, communities are converting to renewable energy because of the negative effects of fossil fuels. In 2020, renewable energy sources provided about 29% of the world's primary energy. However, the intermittent nature of renewable power, calls for substantial energy storage. Pumped storage hydropower is the most dependable and widely used option ???



This new type of energy storage technology helps save land resources, is environmentally friendly, and provides efficient peak shaving, among other advantages. 2024 Construction Begins on China's First Independent Flywheel + Lithium Battery Hybrid Energy Storage Power Station May 19, 2024 2020 China's First Independent Commercial



"Fossil-fuel fired plants have traditionally been used to manage these peaks and troughs, but battery energy storage facilities can replace a portion of these so-called peaking power generators



This issue of Zoning Practice explores how stationary battery storage fits into local land-use plans and zoning regulations. It briefly summarizes the market forces and land-use issues associated with BESS development, analyzes existing regulations for these systems, and offers guidance for new regulations rooted in sound planning principles.

ENERGY STORAGE POWER STATION INDUSTRIAL LAND



3.7se of Energy Storage Systems for Peak Shaving U 32 3.8se of Energy Storage Systems for Load Leveling U 33 3.9ogrid on Jeju Island, Republic of Korea Micr 34 4.1rice Outlook for Various Energy Storage Systems and Technologies P 35 4.2 Magnified Photos of Fires in Cells, Cell Strings, Modules, and Energy Storage Systems 40



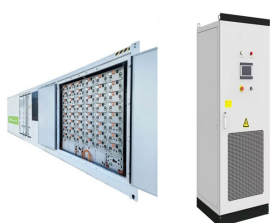
300 MWh is perhaps big or even "huge" for a battery storage but not generally for storing energy. 300 MWh is about the energy that a typical nuclear power plant delivers in 20 minutes. A modern pumped hydro storage, for example (Nant-de-Drance, Switzerland), stores about 20 GWh (with turbines for 900 MW) what is about 67 times the 300 MWh.



Battery storage is a technology that enables power system operators and utilities to store energy for later use. A battery energy storage system (BESS) is an electrochemical device that charges (or collects energy) from the grid or a power plant and then discharges that energy at a later time

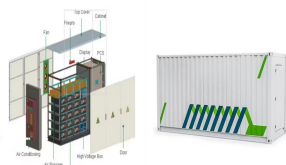


Driven by China's long-term energy transition strategies, the construction of large-scale clean energy power stations, such as wind, solar, and hydropower, is advancing rapidly.



It is suitable for the construction of energy storage power station in areas with dry surface and limited industrial land. small PSAM rely on their own surface-to-aboveground height difference, underground mine water, original industrial land, and relocation of people during the mining process as a basis and have essentially no requirements

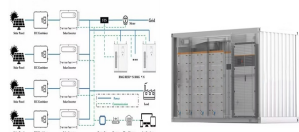
ENERGY STORAGE POWER STATION INDUSTRIAL LAND



In the ever-evolving era of clean energy, energy storage technology has become a focal point in the energy industry. Energy storage systems bring flexibility, stability, and sustainability to power systems. Within the field of energy storage, there are two primary domains: commercial and industrial energy storage and large-scale energy storage???



When fully charged, the 100MW battery facility will be capable of holding 400MWh of electricity, which will be enough to power approximately 80,000 homes and businesses for four hours.. Location and site details. The Ventura energy storage project is being developed near the city of Oxnard, north of Los Angeles in the Ventura County of California.



On August 27, 2020, the Huaneng Mengcheng wind power 40MW/40MWh energy storage project was approved for grid connection by State Grid Anhui Electric Power Co., LTD. Project engineering, procurement, and construction (EPC) was provided by Nanjing NR Electric Co., Ltd., while the project's container e



Large-scale integration of renewable energy in China has had a major impact on the balance of supply and demand in the power system. It is crucial to integrate energy storage devices within wind power and photovoltaic (PV) stations to effectively manage the impact of large-scale renewable energy generation on power balance and grid reliability.



Different energy and power capacities of storage can be used to manage different tasks. Short-term storage that lasts just a few minutes will ensure a solar plant operates smoothly during output fluctuations due to passing clouds, while longer-term storage can help provide supply over days or weeks when solar energy production is low or during

ENERGY STORAGE POWER STATION INDUSTRIAL LAND



The Meizhou Baohu Energy Storage Power Station is located in an industrial park and is the first grid-side, stand-alone energy storage project with over 100 MWh on the China Southern Power Grid. HiTHIUM's immersion liquid-cooling technology realizes an iterative upgrade of electrochemical energy storage safety, with a 50% increase in battery



Texas-based energy company Vistra Corp. applied to the city to build a battery storage project on the retired Morro Bay Power Plant property. The facility would either house batteries in three Costco -warehouse-sized buildings or in 174 individual enclosures ??? enough to store 600 megawatts of electricity and power 450,000 homes, according to



Conventional power plant operation with a higher flexibility using TES was examined in research projects (e.g., BMWi funded projects FleGs 0327882 and FLEXI-TES 03ET7055). The article gives an overview of molten salt thermal energy storage (TES) at commercial and research level for different applications. Large-scale molten salt storage is



Battery storage can offer a source of support to the electricity grid, enabling the addition of more wind and solar power over time. The Irish energy system today is using gas or coal power plants for energy purposes, rather than as a ???



The energy industry is a key industry in China. The development of clean energy technologies, which prioritize the transformation of traditional power into clean power, is crucial to minimize peak carbon emissions and achieve carbon neutralization (Zhou et al., 2018, Bie et al., 2020) recent years, the installed capacity of renewable energy resources has been steadily ???

ENERGY STORAGE POWER STATION INDUSTRIAL LAND



A run-of-river hydroelectric power station that is downstream of a large dam takes advantage of storage in that dam to reduce dependence on day-to-day rainfall. needs of a million-person city could be provided by an off-river PHES system with a power rating of 1 GW and one day of storage that floods 3 km² of land located away from any



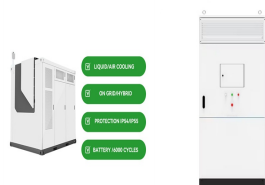
Contact TCO Land Services for a free consultation on your utility-scale battery storage project and determine if we can help you achieve your goals. Contact. Phil Cortese VP Business Development T: (303) 963-6787 E: phil.cortese@tcolandservices.com. References. Energy Information Administration: EIA Annual Energy Outlook 2022



On behalf of the Australian Government, the Australian Renewable Energy Agency (ARENA) has today announced \$422,582 in funding for AGL Energy Limited (AGL) to investigate the viability of retrofitting the Torrens Island Power Station B in South Australia with thermal energy storage technology.



Landowners can make money by leasing their land for a Battery Energy Storage System (BESS) project. It can require as little as 1 or 2 acres. An energy storage project is a cluster of battery banks (or modules) that are connected to the electrical grid. Then, when the cost of electricity is relatively high, or when power generation



Phase 1 of Moss Landing Energy Storage Facility was connected to the power grid and began operating on 11 December 2020, at the site of Moss Landing Power Plant, a natural gas power station owned by Vistra since it acquired the facility's previous owner, Dynegy in 2018. the company claimed that the industrial zone in which it sits offers