

ENERGY STORAGE POWER STATION PEAK SHAVING AND VALLEY FILLING POLICY



Does a battery energy storage system have a peak shaving strategy?

Abstract: From the power supply demand of the rural power grid nowadays, considering the current trend of large-scale application of clean energy, the peak shaving strategy of the battery energy storage system (BESS) under the photovoltaic and wind power generation scenarios is explored in this paper.



Do energy storage systems achieve the expected peak-shaving and valley-filling effect? Abstract: In order to make the energy storage system achieve the expected peak-shaving and valley-filling effect, an energy-storage peak-shaving scheduling strategy considering the improvement goal of peak-valley difference is proposed.



Does constant power control improve peak shaving and valley filling? Finally,taking the actual load data of a certain area as an example,the advantages and disadvantages of this strategy and the constant power control strategy are compared through simulation,and it is verified that this strategy has a better effect of peak shaving and valley filling. Conferences > 2021 11th International Confe



Can load peak shaving and valley filling reduce PVD? The function of load peak shaving and valley filling is achieved,thus ensuring the safe and orderly operation of the rural power grid. The feasibility of the strategy is verified through simulation results on multiple scenarios,for the decreased PVD of 44.03%,24.3%,and 33.4%in Scenario 1-3. Conferences > 2023 IEEE International Confe



Does es capacity enhance peak shaving and frequency regulation capacity? However,the demand for ES capacity to enhance the peak shaving and frequency regulation capability of power systems with high penetration of RE has not been clarified at present. In this context,this study provides an approach to analyzing the ES demand capacity for peak shaving and frequency regulation.

ENERGY STORAGE POWER STATION PEAK SHAVING AND VALLEY FILLING POLICY



How is peak-shaving and valley-filling calculated? First, according to the load curve in the dispatch day, the baseline of peak-shaving and valley-filling during peak-shaving and valley filling is calculated under the constraint conditions of peak-valley difference improvement target value, grid load, battery power, battery capacity, etc.



Jul 2, 2023 Guangdong Robust energy storage support policy: user-side energy storage peak-valley price gap widened, scenery project 10% Dec 22, 2022 100MW Dalian Liquid Flow Battery Energy Storage and Peak ???



ENERGY STORAGE POWER STATION PEAK SHAVING AND VALLEY FILLING POLICY



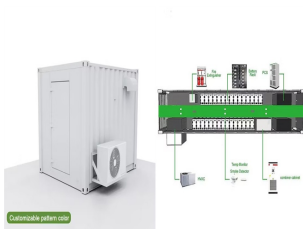
From the power supply demand of the rural power grid nowadays, considering the current trend of large-scale application of clean energy, the peak shaving strategy of the battery energy ???



Peak Shaving. Sometimes called "load shedding," peak shaving is a strategy for avoiding peak demand charges by quickly reducing power consumption during a demand interval. In some cases, peak shaving can be ???



This strategy aims to promote peak shaving and enhance renewable energy utilization. For additional insights and updates on the peak shaving and valley filling ???



100kw 215kwh Battery Storage All in One Energy Storage Systems Cabinet Hybrid Solar Inverter for Peak Shaving and Valley Filling, Find Details and Price about BMS LiFePO4 Battery Solar Power Station from 100kw ???



In Figure 12, the real-time dispatch of CS includes the non-valley filling power purchase, which is the power for ESS charging and EV charging. The peak shaving power sale is the discharging power of ESS to the grid. The ???

ENERGY STORAGE POWER STATION PEAK SHAVING AND VALLEY FILLING POLICY



Energy storage system (ESS) has the function of time-space transfer of energy and can be used for peak-shaving and valley-filling. Therefore, an optimal allocation method of ???



In recent times, energy management in low-voltage distribution networks has become increasingly important, driven by the need for energy efficiency, cost reductions, and alignment with global ???



The 100 megawatt Dalian Flow Battery Energy Storage Peak-shaving Power Station was connected to the grid in Dalian China on Thursday. It will be put into service in mid-October, sources in the



On October 30, the 100MW liquid flow battery peak shaving power station with the largest power and capacity in the world was officially connected to the grid for power ???



Building upon the analysis of the role of configuration of energy storage on the new energy side, this paper proposes an operational mode for active peak regulation "photovoltaic + energy ???

ENERGY STORAGE POWER STATION PEAK SHAVING AND VALLEY FILLING POLICY



With the transformation of China's energy structure, the rapid development of new energy industry is very important for China. A variety of energy storage technologies based on new energy ???



The Dalian Flow Battery Energy Storage Peak-shaving Power Station, which is based on vanadium flow battery energy storage technology developed by DICP, will serve as the city's "power bank" and play the role of ???



In order to make the energy storage system achieve the expected peak-shaving and valley-filling effect, an energy-storage peak-shaving scheduling strategy considering the improvement goal ???



The technologies of joint dispatching of distributed generations (DGs) and energy storage devices (ESS) for load peak shaving and valley filling are widely concerned (Sigrist et al., 2013; Setlhaolo and Xia, 2015; Aneke and ???



The large-scale integration of these vehicles will impact the operations and planning of the power grid. In this paper, we focused on an electric vehicle charging/discharging (V2G) (Vehicle to ???