

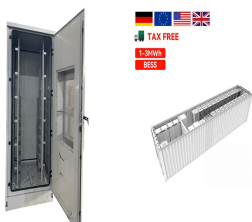
ENERGY STORAGE POWER SUPPLY DOES NOT TURN ON



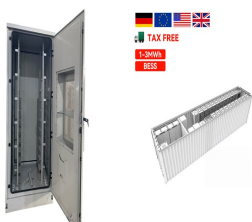
Why is my computer refusing to start with a power supply? However, the computer refusing to start with a power supply you know works is a sign that something else is wrong with the machine. At this point, consider removing everything except one component that plugs into the PSU. Try to turn it on and see whether it works. If it doesn't, remove the power to that component and plug in the next.



Why is my PSU protection not working? Sounds like for some reason a protective circuit is engaging. It takes a reset by PSU power off/unplug to disengage the protection. I'd check the voltage at the house outlet, hot-ground should be @ 120v, hot-neutral should be @ the same, neutral-ground should be 0v.



Should I replace my computer's power supply if it's bad? There's no reason to replace a working piece of hardware when testing it is pretty straightforward. An ozone smell or very high-pitched noise, combined with no power in the computer, is an almost certain indication that the power supply is bad. Unplug your computer immediately and skip the testing.



Can a faulty power supply cause a system failure? A faulty power supply can cause a system failure in one of two ways. It may not provide power to the system at all, or it may not provide sufficient voltage and/or current to the various components of the desktop computer. The following step-by-step checklist helps identify if the power supply unit is working correctly.



How do I know if my power supply is failing? The light should be solid on not flickering or flashing, and the power supply fan should also turn on to speed. If the fan is not spinning up properly this should be considered a BIST failure even if the LED lights up. If the integrated self-test LED turns on, then the power supply unit can deliver power to the system board.

ENERGY STORAGE POWER SUPPLY DOES NOT TURN ON



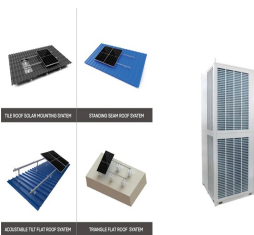
How do you unplug a PSU? Unplug everything from the PSU except the main AC cable and the 24-pin connector cable it comes with. Switch the PSU off with the switch on the unit. If it doesn't have a button, you should turn off the power strip or unplug it while you get things connected. Bend a paperclip into a U shape.



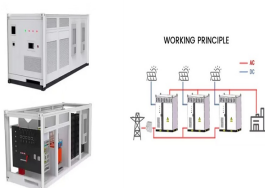
A portable power supply is a large-capacity power supply that can store electric energy in portable power stations. These portable power stations are ideal for use inside or outside your home during outdoor activities for a consistent energy supply. A portable power station has different outputs and can be charged in multiple ways.



It does not include the cost of energy for charging the ESS. Key Insights from Auction Results of Major ESS Tenders a?c The discovered tariff in RTC tenders is lower than any peak power supply tenders, even Storage, 2022 SECI Peak Power Supply - II 1200MW, 2022 RUVNL 1200MW, 2023 SECI RTC-I 400MW, 2019 REMCL 1000MW RTC, 2022 SJVN Firm Power

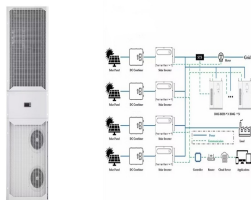


The electricity grid is the largest machine humanity has ever made. It operates on a supply-side model a?? the grid operates on a supply/demand model that attempts to balance supply with end load to maintain stability. When there isn't enough, the frequency and/or voltage drops or the supply browns or blacks out. These are bad moments that the grid works hard to a?|



Computer does not turn on, power supply makes a clicking noise. Thread starter Johnson Deng; Start date Aug 25, outlet and surge protector and at the first try of starting my computer it turns on but shuts down afterwards and does not turn back on. After all of this I decided to replace my motherboard and processor in case there were bad

ENERGY STORAGE POWER SUPPLY DOES NOT TURN ON



5 . Symptoms: Ps2 console wont turn on, no red light and no reaction to ON or RESET buttons in any way when the console is plugged in and the switch on the back is on. How to confirm if your PSU is having issues: We will need a Multimeter or Tester. Your unit's task is to take in the 120v/240v AC from your home's electricity and turn it into @24V DC. To test if your a?|



If the energy storage power supply display shows abnormal symbols and cannot be used, it may be caused by internal failure of the power supply, external environment, or improper use. If a?|



I feel like I should mention again that the power supply won't power on when connected to the X570 board but will power on with the B360 and with the paperclip test and that the X570 has been sent away to be tested and came back that the board has no issues Posted in Storage Devices. 1 TUF GAMING B650-PLUS WIFI boot times are painfully slow



3.7se of Energy Storage Systems for Peak Shaving U 32 3.8se of Energy Storage Systems for Load Leveling U 33 3.9ogrid on Jeju Island, Republic of Korea Micr 34 4.1rice Outlook for Various Energy Storage Systems and Technologies P 35 4.2 Magnified Photos of Fires in Cells, Cell Strings, Modules, and Energy Storage Systems 40



If your power supply has the following problems, please follow the steps in this article to troubleshoot and solve the lighting problem. Phenomenon: Lighting does not turn on, no SOS function. Step 1: Check the illuminator switch. Check if the illuminator key switch is stuck.

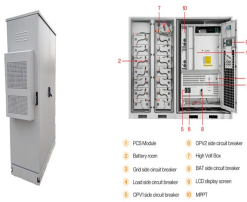
ENERGY STORAGE POWER SUPPLY DOES NOT TURN ON



Energy storage can reduce high demand, and those cost savings could be passed on to customers. Community resiliency is essential in both rural and urban settings. Energy storage can help meet peak energy demands in densely populated cities, reducing strain on the grid and minimizing spikes in electricity costs.



Capacitors used for energy storage. Capacitors are devices which store electrical energy in the form of electrical charge accumulated on their plates. When a capacitor is connected to a power source, it accumulates energy which can be released when the capacitor is disconnected from the charging source, and in this respect they are similar to batteries.



Learn how we can turn your energy waste into renewable energy, through advanced thermal energy storage solutions. it enables 24/7 power, heat or steam supply a?? providing a cost-competitive storage solution compared to molten-salt. and heat dumping mechanisms in case of over-supply. Our energy storage captures and stores excess steam



3 . Learn how to identify if the power supply unit of a Dell desktop is working. Find steps to troubleshoot issues with power supply units and running a self-test diagnostic on the power a?]

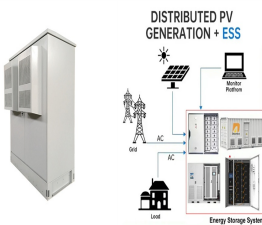


Energy storage is a hot topic. From big batteries like the one at the Emirates Stadium to the smaller smart batteries popping up in homes across the UK, the ability to store energy is a vital part of a plan to make renewables work on a massive scale, and it's all because they bring flexibility to the grid: creating a smarter, more complex, dynamic system not unlike a?]

ENERGY STORAGE POWER SUPPLY DOES NOT TURN ON



It should still be under beelink's 1 year warranty. Rma would be my first recommendation but you can troubleshoot it if you have the time. To start trouble shooting I would try a different 19V power supply and connected to a monitor and see if it turns on (checking if the previous power supply is under supplying wattage to turn on the computer or maybe the power led is dead). Then empty a?]



Step 1: Check the display. The charging information should be clearly displayed when the energy storage is charging, with complete characters and no garbled codes. If the display shows a?]



"When it comes to actual costs, energy storage is not cheap," says Imre Gyuk. We can see where costs stand today, but they'll drop as more storage goes onto the grid. Let's start with storage at power plants. As we learned earlier, an electric company may store energy at a power plant to supply power on high-demand days.



Not only does energy storage facilitate our national clean energy initiative as well as help decarbonize the grid, but a non-wires alternative will also be significantly cheaper for the ratepayer



There are many reasons your PSU won't turn on. Most of them have to do with its incoming power flow or how it's connected. If your PSU isn't getting enough power from the wall outlet, it may not be able to turn on. Even if an outlet is working for another device, it might not be providing quite enough for the PSU.

ENERGY STORAGE POWER SUPPLY DOES NOT TURN ON



So my Synology NAS (DS1515+) Won't power on, I think it's the power supply, but I don't know for sure as I don't have a second PSU to test it on. The Paper Clip test was a success, but the system won't boot. I was wondering if it was a dead motherboard. The system has been working for years and



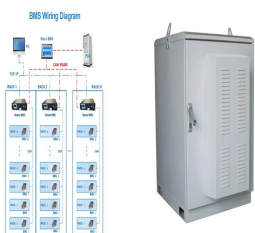
Drive Does Not Power Down When the Computer is Shut Down. A common reason a drive will not shut down with the computer is that the drive may have a power sensing feature. Power Sensing. Allows the drive to sense if the computer is on or off. Determines whether the drive should stay on. May see the data port as active.



Motherboard Not Getting Power. If you have a faulty or an underpowered PSU, your motherboard won't be getting any power which can cause your motherboard won't not to turn on. Check your connections. The motherboard is connected to the PSU via a 20 or 24-pin connector, while the CPU is connected by a 4 or 8-pin connector.



U.S. Department of Energy, Pathways to commercial liftoff: long duration energy storage, May 2023; short duration is defined as shifting power by less than 10 hours; interday long duration energy storage is defined as shifting power by 10a??36 hours, and it primarily serves a diurnal market need by shifting excess power produced at one point in



No hard drives, no GPU, unplug all fans. You should only leave the CPU power and Mobo power plugged in. See if you get any response. If your CPU has onboard graphics great. If not, just look for changes in lights or debug lights. If it turns on, then power off, add one component, turn on, see if you get a boot. Rinse and repeat.

ENERGY STORAGE POWER SUPPLY DOES NOT TURN ON



Energy storage solutions will take on a dominant role in fulfilling future needs for supplying renewable energy 24/7. It's already taking shape today a?? and in the coming years it will become a more and more indispensable and flexible part of our new energy world.



Energy is essential in our daily lives to increase human development, which leads to economic growth and productivity. In recent national development plans and policies, numerous nations have prioritized sustainable energy storage. To promote sustainable energy use, energy storage systems are being deployed to store excess energy generated from a?]



Whether you need a power supply replacement or you're trying to build a custom system from scratch, choosing among the seemingly endless list of power supply types is a challenge.. Selecting the wrong types of power supply can lead to poor performance, costly system downtimes, or even catastrophic power supply failure.. The good news is we're here to a?]



Battery-based power is a third type of power supply and is essentially a mobile energy storage unit. Battery-based power produces negligible noise to interfere with electronics, but loses capacity and does not provide constant voltage as the batteries drain.



Place one hand by the switch on the power supply and the other next to the normal power switch for the computer. Turn the switch on the power supply back on; After about a 1/4 to 1/2 second pause press the main power switch on the computer. This press should be distinctly separate from activating the switch on the power supply, but before the