

ENERGY STORAGE PUMPING



What is a pumped storage facility? Pumped storage facilities are built to push water from a lower reservoir uphill to an elevated reservoir during times of surplus electricity. In pumping mode, electric energy is converted to potential energy and stored in the form of water at an upper elevation, which is why it is sometimes called a ???water battery???



How does pumped hydropower storage work? Pumped hydropower storage works by using the force of gravity to generate electricity. It absorbs surplus energy at times of low demand and releases it when demand is high. This is done by pumping water from a lower source to an upper reservoir and then allowing it to flow back down through a turbine to generate electricity.



How does Pumped Hydro Energy Storage (PHES) work? PHES works by pumping water from a lower reservoir to a nearby upper reservoir when there is spare power generation capacity (for example, on windy and sunny days). The water is then allowed to return to the lower reservoir through a turbine to generate electricity when there is a supply shortfall (for example, during the evening).



What is the energy storage capacity of a pumped hydro facility? The energy storage capacity of a pumped hydro facility depends on the size of its two reservoirs. At times of high demand - and higher prices - the water is then released to drive a turbine in a powerhouse and supply electricity to the grid. The amount of power generated is linked to the size of the turbine.



What is pumped storage hydropower (PSH)? Pumped storage hydropower (PSH) is the world's largest battery technology, accounting for more than 90% of long-duration energy storage globally, surpassing lithium-ion and other battery types. PSH is a closed-loop system with an ???off-river??? site that produces power from water pumped to an upper reservoir without a significant natural inflow.

ENERGY STORAGE PUMPING



What is the main source of energy for pumped hydropower storage?
 Pumped hydropower storage uses the force of gravity to generate electricity using water that has been previously pumped from a lower source to an upper reservoir. The technology absorbs surplus energy at times of low demand and releases it when demand is high.



Example of closed-loop pumped storage hydropower ??? World's biggest battery . Pumped storage hydropower is the world's largest battery technology, with a global installed capacity of nearly 200 GW ??? this accounts ???



Share To: Enlit on the Road visited La Muela, the largest pumped storage hydropower plant in Europe, to find out how Iberdola's giant battery optimizes the ROI of renewable energy sources and enables grid stabilization ???



Pumped Storage Hydropower (PSH) can fix the problem. PSH functions as a giant battery-like energy storage system. By pumping water from a lower reservoir to a higher one, it stores extra electricity. When there is a ???

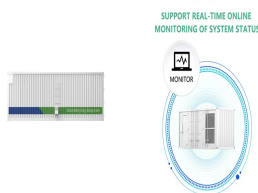


This method allows the storage of large amounts of energy in the form of dammed water in two reservoirs located at different heights. Hydraulic pumping, which today provides almost 85% of the installed electricity storage ???



Pumped storage hydro is a mature energy storage method. It uses the characteristics of the gravitational potential energy of water for easy energy storage, with a large energy storage scale, fast adjustment speed, flexible ???

ENERGY STORAGE PUMPING



Pumped-hydro energy storage (PHES) stores potential energy by pumping water from a lower reservoir to an upper reservoir. The energy is stored as gravitational potential energy of the elevated water. During times of high ???



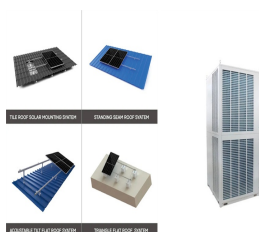
Pumped storage hydropower (PSH) is a type of hydroelectric energy storage. It is a configuration of two water reservoirs at different elevations that can generate power as water moves down from one to the other (discharge), ???



A water battery ??? also known as a pumped storage hydropower system ??? is an energy storage and generation method that runs on water. When excess electricity is available, water is pumped to an upper reservoir, where it ???



Large-scale: This is the attribute that best positions pumped hydro storage which is especially suited for long discharge durations for daily or even weekly energy storage applications.. Cost-effectiveness: thanks to its lifetime ???



The basic operation principle of a pumped-storage plant is that it converts electrical energy from a grid-interconnected system to hydraulic potential energy (so-called "charging") by pumping the water from a lower reservoir to ???



On May 14, 1968, the first PSPS in China was put into operation in Gangnan, Pingshan County, Hebei Province. It is a mixed PSPS. There is a pumped storage unit with the installed capacity ???

ENERGY STORAGE PUMPING



Pumped storage operates by storing electricity in the form of gravitational potential energy through pumping water from a lower to an upper reservoir (see figure 1). The result of this simple solution is a very high round ???



Compressed air energy storage (CAES) one of the technologies looking to be established in Australia to provide large-scale synchronous capacity. Here, we break down the technology and what equipment is involved, and ???



reservoirs to create energy storage. Typically, pumping would take place by buying electricity during times when prices are low, which is when demand is low or the availability of electricity



Promising approaches include improving technologies such as compressed air energy storage and vanadium redox flow batteries to reduce capacity costs and enhance discharge efficiency. In