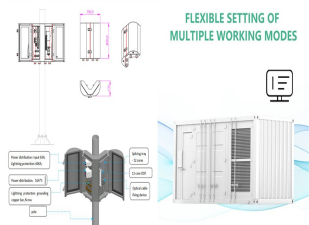
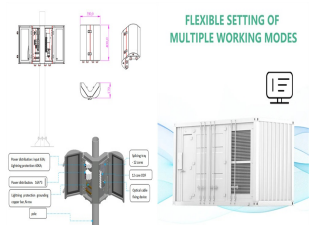


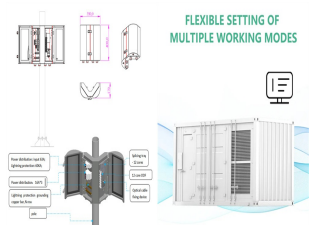
ENERGY STORAGE SAFETY INSPECTION RECORD FORM



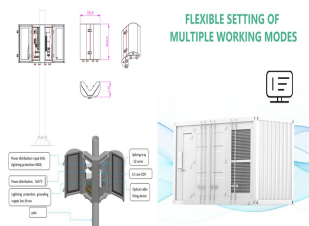
What are the requirements for a reg system inspection? Completeness of the documentation and its correspondence with the REG system on-site, as per SEC???'s inspection checklist. Inspect the presence of Interface Protection and required switches. Witness Compliance test to be performed if necessary, during cold commissioning. Temporary connection granted (known as ???Limited Operational Notification???).



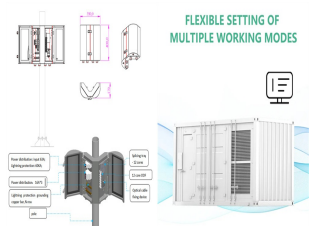
What is the energy storage safety strategic plan? Under the Energy Storage Safety Strategic Plan, developed with the support of the U.S. Department of Energy (DOE) Office of Electricity Delivery and Energy Reliability Energy Storage Program by Pacific Northwest Laboratory and Sandia National Laboratories, an Energy Storage Safety initiative has been underway since July 2015.



Can CSRS be applied to energy storage systems? Until existing model codes and standards are updated or new ones are developed and then adopted, one seeking to deploy energy storage technologies or needing to verify the safety of an installation may be challenged in trying to apply currently implemented CSRs to an energy storage system (ESS).



What are the responsibilities of SEC & Wera inspection & testing? Referring to the approved WERA regulations and SEC connection process, the inspection and testing are executed in Step 3 named as ???REG Connection??? phase. SEC???'s responsibilities at this stage will be limited to the following: Completeness of the documentation and its correspondence with the REG system on-site, as per SEC???'s inspection checklist.



This briefing covers battery energy storage systems (BESS), concerns about their safety and barriers to their deployment. Skip to main content. Battery energy storage systems (BESSs) use batteries, for ???

ENERGY STORAGE SAFETY INSPECTION RECORD FORM



In the context of Energy Storage Systems (ESS), including Battery Energy Storage Systems (BESS), UL 9540 and 9540A standards have been developed. UL 9540 is the original standard, while 9540A represents the ???



A non-load-break-rated switch shall be permitted to be used as a disconnecting means, (NEC 706.30 (C)) Where battery energy storage system input and output terminals are more than 5ft from the connected equipment, or where these ???



Purpose. Inspection checklists are used by professional inspectors primarily as a guide for performing appropriate assessments to determine if what is being inspected???whether that is a product, equipment, facility, or ???



Description. This Domestic unvented hot water storage vessel commissioning / inspection form is designed for and fully compatible for use with ServiceM8.. This form takes you and your staff through all of the steps that form part of the ???



Utilizing ready-to-use warehouse safety checklists helps in establishing a proper safety protocol, conducting regular safety training, and following a long-term and short-term housekeeping procedure. Its importance ???