

ENERGY STORAGE STATION SCALE LIMIT



Can large-scale battery energy storage systems participate in system frequency regulation? In the end, a control framework for large-scale battery energy storage systems jointly with thermal power units to participate in system frequency regulation is constructed, and the proposed frequency regulation strategy is studied and analyzed in the EPRI-36 node model.



What is a large-scale energy storage power station? The large-scale energy storage power station is composed of thousands of single batteries in series and parallel, and the power distribution of each battery pack is the key to the coordinated control of the entire station.



What is the power capacity of battery energy storage stations B1 & B2? According to the calculation, the power and capacity of the battery energy storage stations B1 and B2 with the same frequency regulation capability as the synchronous generator G7 and G8 are about 30???MW/4???MWh and 40???MW/5???MWh, respectively . 5.2. Simulation Calculation Analysis



What is a stationary battery energy storage (BES) facility? A stationary Battery Energy Storage (BES) facility consists of the battery itself, a Power Conversion System (PCS) to convert alternating current (AC) to direct current (DC), as necessary, and the ???balance of plant??? (BOP, not pictured) necessary to support and operate the system. The lithium-ion BES depicted in Error!



Are grid-scale battery energy storage systems safe? Despite widely known hazards and safety design of grid-scale battery energy storage systems, there is a lack of established risk management schemes and models as compared to the chemical, aviation, nuclear and the petroleum industry.

ENERGY STORAGE STATION SCALE LIMIT



Can a battery energy storage station be used for power compensation?
The output power of conventional thermal power units has a hysteresis. Hence, the power of the battery energy storage station can be used for power compensation in the initial stage of system power shortage.



This energy storage station is one of the first batch of projects supporting the 100 GW large-scale wind and photovoltaic bases nationwide. It is a strong measure taken by Ningxia Power to implement the "Four Revolutions and One Cooperation" new strategy for energy security, promote the integration of source-grid-load-storage and the



6 UTILITY SCALE BATTERY ENERGY STORAGE SYSTEM (BESS)
BESS DESIGN IEC - 4.0 MWH SYSTEM DESIGN Battery storage systems are emerging as one of the potential solutions to increase power system flexibility in the presence of variable energy resources, such as solar and wind, due to their



The International Renewable Energy Agency predicts that with current national policies, targets and energy plans, global renewable energy shares are expected to reach 36% and 3400 GWh of



With the rapid increase of installed renewable energy capacity, energy storage systems have become one of the effective solutions to ensure the stable operation of modern power system[1, 2] Considering the requirement of the power system and geographical limitations, the determination of the location and capacity of the energy storage station is ???



City-scale assessment of stationary energy storage supporting end-station fast charging for different bus-fleet electrification levels Fig. 6 d shows the total costs, depending on the capacity of the SES and the power limit, for the selected charging station and scenario. The dot lies above the line,

ENERGY STORAGE STATION SCALE LIMIT

indicating that the limit is not

ENERGY STORAGE STATION SCALE LIMIT



Large-scale integration of renewable energy in China has had a major impact on the balance of supply and demand in the power system. It is crucial to integrate energy storage devices within wind power and photovoltaic ???



Request PDF | Explosion hazards study of grid-scale lithium-ion battery energy storage station | Lithium-ion battery is widely used in the field of energy storage currently. However, the



In recent years, electrochemical energy storage has developed quickly and its scale has grown rapidly [3], [4]. Battery energy storage is widely used in power generation, transmission, distribution and utilization of power system [5] recent years, the use of large-scale energy storage power supply to participate in power grid frequency regulation has been widely ???



The International Renewable Energy Agency predicts that with current national policies, targets and energy plans, global renewable energy shares are expected to reach 36% and 3400 GWh of stationary energy storage by 2050. However, IRENA Energy Transformation Scenario forecasts that these targets should be at 61% and 9000 GWh to achieve net zero ???



The utility-scale storage sector in the United States experienced tremendous growth over 2022 and 2023. Total volume of energy storage installations in the United States in 2022 totaled an incredible 11,976 megawatt hours (MWh), which was surpassed in just the first three quarters of 2023 reaching a staggering 13,518 MWh by cumulative volume.

ENERGY STORAGE STATION SCALE LIMIT



Utility-scale lithium-ion energy storage batteries are being installed at an accelerating rate in many parts of the world. Some of these batteries have experienced troubling fires and explosions. There have been two types of explosions; flammable gas explosions due to gases generated in battery thermal runaways, and electrical arc explosions



In the past few decades, electricity production depended on fossil fuels due to their reliability and efficiency [1]. Fossil fuels have many effects on the environment and directly affect the economy as their prices increase continuously due to their consumption which is assumed to double in 2050 and three times by 2100 [6] g. 1 shows the current global ???



The International Renewable Energy Agency predicts that with current national policies, targets and energy plans, global renewable energy shares are expected to reach 36% and 3400 GWh of stationary energy ???



A wind farm and a CCES power station are connected to node 23 of the original system. Economic comparative analysis is carried out considering three scenarios: no energy storage, carbon-containing energy storage power station, and compressed air energy storage power station, to analyze the total operating costs of the system.



Large-scale integration of renewable energy in China has had a major impact on the balance of supply and demand in the power system. It is crucial to integrate energy storage devices within wind power and photovoltaic (PV) stations to effectively manage the impact of large-scale renewable energy generation on power balance and grid reliability.



The joint intelligent control and optimization technology of "renewable energy + energy storage + synchronous condenser" can effectively enhance the deliverable capacity limits of renewable

ENERGY STORAGE STATION SCALE LIMIT



PHES is much cheaper for large-scale energy storage (overnight or several days) and has much longer technical lifetime (50???100 years). All prices in this article are in United States dollars. 2. The rapid rise of variable solar and wind. Energy model of pumped hydro storage station;



A planning scheme for energy storage power station based on multi-spatial scale model. P_n is the upper limit of the power of the energy storage system. In this paper, a multi-space scale energy storage capacity allocation model is proposed. Under different spatial scales, there are certain differences in dispatching capacity



This study investigates an optimal sizing strategy for substation-scale energy storage station (ESS) that is installed at substations of transmission grids to provide services of both wind power fluctuation smoothing and power supply for peak load simultaneously. Owing to the maximum discharge power limits, discharge power ramp, and minimum



Part 1 of 4: Battery Management and Large-Scale Energy Storage Battery Monitoring vs. Battery Management Communication Between the BMS and the PCS Battery Management and Large-Scale Energy Storage While all battery management systems (BMS) share certain roles and responsibilities in an energy storage system (ESS), they do not all ???



Today, energy storage devices are not new to the power systems and are used for a variety of applications. Storage devices in the power systems can generally be categorized into two types of long-term with relatively low response time and short-term storage devices with fast response [1]. Each type of storage is capable of providing a specific set of applications, ???

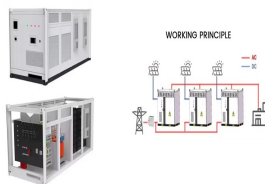


US Energy Information Administration, Battery Storage in the United States: An Update on Market Trends, p. 8 (Aug. 2021). Wood Mackenzie Power & Renewables/American Clean Power Association, US Storage Energy Monitor, p. 3 (Sept. 2022). See IEA, Natural Gas-Fired Electricity

ENERGY STORAGE STATION SCALE LIMIT

(last accessed Jan. 23, 2023); IEA, Unabated Gas-Fired Generation in the Net ???

ENERGY STORAGE STATION SCALE LIMIT



energy storage technologies for grid-scale electricity sector applications. Transportation sector and other energy storage applications (e.g., mini- and micro-grids, electric vehicles, distribution network applications) are not covered in this primer; however, the authors do recognize that these sectors strongly



Among the existing electricity storage technologies today, such as pumped hydro, compressed air, flywheels, and vanadium redox flow batteries, LIB has the advantages of fast response rate, high energy density, good energy efficiency, and reasonable cycle life, as shown in a quantitative study by Schmidt et al. In 10 of the 12 grid-scale



Large-scale energy storage is so-named to distinguish it from small-scale energy storage (e.g., batteries, capacitors, and small energy tanks). The advantages of large-scale energy storage are its capacity to accommodate many energy carriers, its high security over decades of service time, and its acceptable construction and economic management.



One of the main challenges in using 2nd life batteries is determining and predicting the end of life. As it is done for the first life usage, the state of health (SoH) decrease for 2nd life batteries is also commonly fixed to 20%, leading to an end of life (EoL) capacity of 60% [12, 13]. This EoL criterion is mainly driven by the start of non-linear ageing.

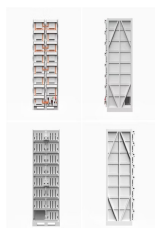


1 INTRODUCTION. Turkey has increased its installed wind power capacity from 1.73 GW in 2011 to 10.67 GW in 2021. Accordingly, the share of wind energy in electricity generation has improved from 3.27% to 10.63% [1]. The total energy demand in Turkey is predicted to rise from 324.5 TWh in 2022 to 452.2 TWh by 2031 [2]. Hence, Turkey needs to increase its ???

ENERGY STORAGE STATION SCALE LIMIT



According to statistics, by the end of 2021, the cumulative installed capacity of new energy storage in China exceeded 4 million kW. By 2025, the total installed capacity of new energy storage will reach 39.7 GW [1]. At present, multiple large-scale electrochemical energy storage power station demonstration projects have been completed and put into operation, [2].



Electrochemical energy storage technology has been widely used in grid-scale energy storage to facilitate renewable energy absorption and peak (frequency) modulation [1]. Wherein, lithium-ion battery [2] has become the main choice of electrochemical energy storage station (ESS) for its high specific energy, long life span, and environmental friendliness.



Let C_{max} be the investment cost limit, and E is the energy multiplier of energy storage battery. 2.3 Inner layer optimization model From the perspective of the base station energy storage operator, for a multi-base station cooperative system composed of 5G base stations, the objective



To leverage the efficacy of different types of energy storage in improving the frequency of the power grid in the frequency regulation of the power system, we scrutinized the capacity allocation of hybrid energy storage power stations when participating in the frequency regulation of the power grid. Using MATLAB/Simulink, we established a regional model of a [3].