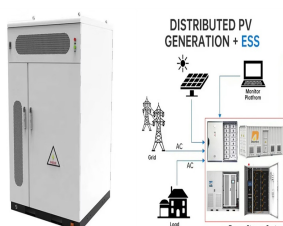


ENERGY STORAGE STATION TYPE



What is an energy storage system? An energy storage system (ESS) for electricity generation uses electricity (or some other energy source, such as solar-thermal energy) to charge an energy storage system or device, which is discharged to supply (generate) electricity when needed at desired levels and quality. ESSs provide a variety of services to support electric power grids.



What is a battery energy storage system (BESS)? A battery energy storage system (BESS) or battery storage power station is a type of energy storage technology that uses a group of batteries to store electrical energy.



What are the different types of energy storage systems? Other types of ESSs that are in various stages of research, development, and commercialization include capacitors and super-conducting magnetic storage. Hydrogen, when produced by electrolysis and used to generate electricity, could be considered a form of energy storage for electricity generation.



What is a battery energy storage system? Battery energy storage systems are generally designed to be able to output at their full rated power for several hours. Battery storage can be used for short-term peak power and ancillary services, such as providing operating reserve and frequency control to minimize the chance of power outages.

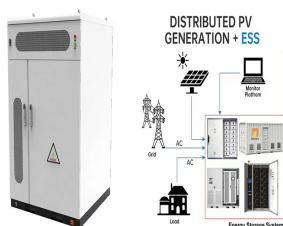


Which energy storage power station successfully transmitted power? China's largest single station-type electrochemical energy storage power station Ningde Xiapu energy storage power station (Phase I) successfully transmitted power. China Energy Storage Alliance On November 16, Fujian GW-level Ningde Xiapu Energy Storage Power Station (Phase I) of State Grid Times successfully transmitted power.

ENERGY STORAGE STATION TYPE



Who uses battery energy storage systems? The most natural users of Battery Energy Storage Systems are electricity companies with wind and solar power plants. In this case, the BESS are typically large: they are either built near major nodes in the transmission grid, or else they are installed directly at power generation plants.



Shared energy storage has the potential to decrease the expenditure and operational costs of conventional energy storage devices. However, studies on shared energy storage configurations have primarily focused on the peer-to-peer competitive game relation among agents, neglecting the impact of network topology, power loss, and other practical ???



The Tesla Megapack is a large-scale rechargeable lithium-ion battery stationary energy storage product, intended for use at battery storage power stations, manufactured by Tesla Energy, the energy subsidiary of Tesla, Inc.. Launched in 2019, a Megapack can store up to 3.9 megawatt-hours (MWh) of electricity. Each Megapack is a container of similar size to an intermodal ???



How do battery energy storage systems work? Simply put, utility-scale battery storage systems work by storing energy in rechargeable batteries and releasing it into the grid at a later time to deliver electricity or other grid services. Without energy storage, electricity must be produced and consumed at exactly the same time.



A wide array of different types of energy storage options are available for use in the energy sector and more are emerging as the technology becomes a key component in the energy systems of the future worldwide. As the need for energy storage in the sector grows, so too does the range of solutions available as the demands become more specific

ENERGY STORAGE STATION TYPE



levels of renewable energy from variable renewable energy (VRE) sources without new energy storage resources. 2. There is no rule-of-thumb for how much battery storage is needed to integrate high levels of renewable energy. Instead, the appropriate amount of grid-scale battery storage depends on system-specific characteristics, including:



The integration between hybrid energy storage systems is also presented taking into account the most popular types. Hybrid energy storage system challenges and solutions introduced by published research are summarized and analyzed. These batteries can be charged at a charging station or at home using an ordinary plug or by a regenerative



At an energy storage station in eastern Chinese city of Nanjing, a total of 88 white battery cartridges with a storage capacity of nearly 200,000 kilowatt-hours are transmitting electricity to the city's grid. The country's installed new-type energy storage capacity had reached 31.39 gigawatts by the end of 2023, of which 22.6 gigawatts

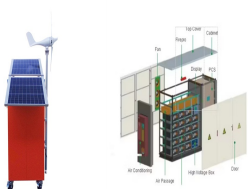


In recent years, electrochemical energy storage has developed quickly and its scale has grown rapidly [3], [4]. Battery energy storage is widely used in power generation, transmission, distribution and utilization of power system [5] recent years, the use of large-scale energy storage power supply to participate in power grid frequency regulation has been widely ???



Therefore, equipping new energy stations with energy storage allows them to participate in the frequency regulation ancillary service market. This not only increases the revenue of the power stations but also provides more frequency regulation support to the grid. The type of energy storage device selected is a lithium iron phosphate

ENERGY STORAGE STATION TYPE



Energy storage plays an important role in this balancing act and helps to create a more flexible and reliable grid system. For example, when there is more supply than demand, such as during the night when continuously operating power plants provide firm electricity or in the middle of the day when the sun is shining brightest, the excess



In order to improve the rationality of power distribution of multi-type new energy storage system, an internal power distribution strategy of multi-type energy storage power station based on improved non-dominated fast sorting genetic algorithm is proposed. Firstly, the mathematical models of the operating cost of energy storage system, the health state loss of energy storage ???



Energy storage involves converting energy from forms that are difficult to store to more conveniently or economically storable forms. Some technologies provide short-term energy storage, while others can endure for much longer. Bulk ???



The energy storage project includes 42 energy storage warehouses and 21 machines integrating energy boosters and converters, using large-capacity sodium-ion batteries of 185 ampere-hours, with a 110-kilovolt booster station as a supporting facility, according to information HiNa Battery Technology, which provides it with sodium-ion batteries



Firstly, according to the national standard, the performance evaluation system of multi-type energy storage power station is established. Secondly, the analytic hierarchy process is used to determine the weight of each index, and the three types of energy storage power stations are evaluated by the multi-level fuzzy comprehensive evaluation method.

ENERGY STORAGE STATION TYPE



The energy storage station, built by China Southern Power Grid's Guangxi branch, is the first phase of an overall 100-MWh project. The anode of both types of batteries is carbon, with the difference that the cathode material of lithium-ion batteries contains lithium ions, while the cathode material of sodium-ion batteries contains sodium



In cryogenic energy storage, the cryogen, which is primarily liquid nitrogen or liquid air, is boiled using heat from the surrounding environment and then used to generate electricity using a cryogenic heat engine. [98] showed the technical improvements of the new third generation type gravel-water thermal energy and proved the novel



Storage technologies include pumped hydroelectric stations, compressed air energy storage and batteries, each offering different advantages in terms of capacity, speed of deployment and environmental impact. Types of Grid Energy Storage: Wheels, Plates and ???



energy storage technologies that currently are, or could be, undergoing research and development that could directly or indirectly benefit fossil thermal energy power systems. ??? The research involves the review, scoping, and preliminary assessment of energy storage



Energy storage solutions that enables the deployment of fast EV charging stations anywhere. Charge point operators will install multiple types of electric vehicle charging stations, from AC to DC with different power outputs. charges and peak energy costs are major barriers for charging operators looking to expand their network of EV



Energy storage is well positioned to help support this need, providing a reliable and flexible form of electricity supply that can underpin the energy transformation of the future. Storage is unique among electricity types in that it can act as a form of both supply and demand, drawing energy from

ENERGY STORAGE STATION TYPE

the grid during off-peak hours when demand is

ENERGY STORAGE STATION TYPE



Pumped storage hydropower (PSH) is a type of hydroelectric energy storage. It is a configuration of two water reservoirs at different elevations that can generate power as water moves down from one to the other (discharge), passing through a turbine. The system also requires power as it pumps water back into the upper reservoir (recharge).



About two thirds of net global annual power capacity additions are solar and wind. Pumped hydro energy storage (PHES) comprises about 96% of global storage power capacity and 99% of global storage energy volume. Batteries occupy most of the balance of the electricity storage market including utility, home and electric vehicle batteries.



Here, experimental and numerical studies on the gas explosion hazards of container type lithium-ion battery energy storage station are carried out. In the experiment, the LiFePO₄ battery module of 8.8kWh was overcharged to thermal runaway in a real energy storage container, and the combustible gases were ignited to trigger an explosion. The



For power grid companies, the FESPS can realize load transfer and reduce power wastage by actively transferring network power flow and charging or discharging the energy storage station. Concurrently, the energy storage system can be discharged at the peak of power consumption, thereby reducing the demand for peak power supply from the power



What is energy storage? Energy storage secures and stabilises energy supply, and services and cross-links the electricity, gas, industrial and transport sectors. It works on and off the grid, in passenger and freight transportation, and in homes as "behind the meter" batteries and thermal stores or heat pump systems.

ENERGY STORAGE STATION TYPE



To leverage the efficacy of different types of energy storage in improving the frequency of the power grid in the frequency regulation of the power system, we scrutinized the capacity allocation of hybrid energy storage power stations when participating in the frequency regulation of the power grid. Using MATLAB/Simulink, we established a regional model of a ???