

ENERGY STORAGE SYSTEM AND INTEGRATION



Can battery energy storage systems be integrated with renewable generation units? Integration of battery energy storage systems (BESSs) with renewable generation units, such as solar photovoltaic (PV) systems and wind farms, can effectively smooth out power fluctuations. In this paper, an extensive literature review is conducted on various BESS technologies and their potential applications in renewable energy integration.



What are the different types of energy storage systems? Battery, battery energy storage system (BESS), energy storage systems, fuel cell, generation expansion planning, hybrid energy storage, microgrid, particle swarm optimization, power system planning, PV, ramp rate, renewable energy integration, renewable energy sources, sizing, solar photovoltaic, storage, techno-economic analysis, and wind turbine.



Does energy storage system support GRID applications? The research facilitated the study of integration of several renewable energy source and have a better understanding of the effectiveness of energy storage system (ESS) to support grid applications.



What are energy storage systems? Energy storage systems (ESSs) make the power system more reliable and efficient by providing a wide array of solutions including spinning reserves, frequency control, load leveling and shifting, voltage regulation and VAR support, power quality improvement and relief of overloaded transmission lines.



What is the role of energy storage technology? Regarding the existing literature and the gaps identified, potential ESS developments and future trends. Energy storage technology plays a role in improving new energy consumption capacities, ensuring the stable and economic operation of power systems, and promoting the widespread application of renewable energy technologies.

ENERGY STORAGE SYSTEM AND INTEGRATION



How do energy storage systems improve the power quality of the grid? In addition, the ESSs improve the power quality of the grid by providing ancillary services[6,7,8]. The demand for energy storage will continue to grow as the penetration of renewable energy into the electric grid increases year by year.



Integration of battery energy storage systems (BESSs) with renewable generation units, such as solar photovoltaic (PV) systems and wind farms, can effectively smooth out power fluctuations. ???



This paper presents a review of energy storage systems covering several aspects including their main applications for grid integration, the type of storage technology and the power converters used



Energy storage research at the Energy Systems Integration Facility (ESIF) is focused on solutions that maximize efficiency and value for a variety of energy storage technologies. With variable energy resources comprising a larger mix of energy generation, storage has the potential to smooth power supply and support the transition to renewable



The Sustainable and Holistic Integration of Energy Storage and Solar PV (SHINES) program develops and demonstrates integrated photovoltaic (PV) and energy storage solutions that are scalable, secure, reliable, and cost-effective. while ensuring a resilient energy system combining energy storage with central and distributed generation.

ENERGY STORAGE SYSTEM AND INTEGRATION



Further, in future electric grid, energy storage systems can be treated as the main electricity sources. Researchers and industrial experts have worked on various energy storage technologies by integrating different renewable energy resources into energy storage systems. Frequency regulation, peak shifting, integration of RE and energy



Renewable energy sources reduce greenhouse gas emissions caused by traditional fossil fuel-based power plants, and experience rapid developments recently. Despite the benefits, due to their intermittent nature, renewables may result in power oscillations, and deteriorate stability, reliability, and power quality of power grids. Integration of battery energy storage systems ???



TES systems are divided into two categories: low temperature energy storage (LTES) system and high temperature energy storage (HTES) system, based on the operating temperature of the energy storage material in relation to the ambient temperature [17, 23]. LTES is made up of two components: aquiferous low-temperature TES (ALTES) and cryogenic

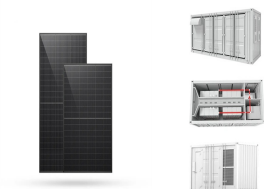


Request PDF | Energy Storage System Integration with Wind Generation for Primary Frequency Support in the Distribution Grid | With the significant increase in the insertion of wind turbines in the



To improve energy utilization efficiency and promote the development of hydrogen energy, we discuss three utilization modes of hydrogen energy, including hydrogen storage, integration into a fuel cell and gas turbine hybrid ???

ENERGY STORAGE SYSTEM AND INTEGRATION



An energy storage system (ESS) adopts clean energy to meet requirements for energy-saving and emissions reductions, and therefore has been developed vigorously in recent years. This study also presents practical applications of various AI techniques in large-scale renewable energy integration systems, and analyzes their effectiveness



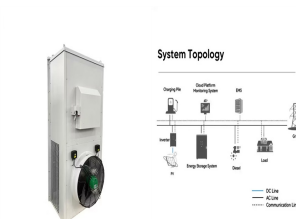
With the development of energy storage technologies (ESTs), the integration of energy storage units has become an effective solution to the fluctuation and uncertainty problem of renewable energy, especially in the applications of smart grids, smart energy systems [20], [21] and smart energy markets [22].



Integration of storage energy systems into grid-connected and standalone energy systems emerged as a promising research area. For both static and mobile applications, the use of hydrogen as a fuel for fuel cell technologies presents a significant difficulty. Numerous studies concentrated on identifying the ideal size and design of HMG systems



Compressed air energy storage (CAES) and pumped hydro storage (PHS) are thermal-based energy storage methods suitable for large-scale energy storage and support RE integration. Fuel cells are electrochemical devices that convert the chemical energy stored in a gaseous or liquid fuel, e.g., hydrogen, methane, methanol, ethanol, and others

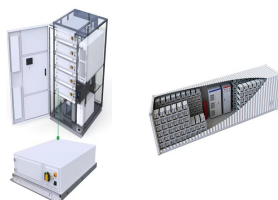


The Energy Systems Integration Group is a nonprofit organization battery energy storage system where field tests of a GFM inverter were carried out (photo courtesy Neoen Australia) Grid-Forming Technology in energy SySTemS inTeGraTion EnErgy SyStEmS IntEgration group iii

ENERGY STORAGE SYSTEM AND INTEGRATION



Energy storage system integration is complex and current approaches can often limit collaboration and flexibility, writes Leon Gosh, managing director of Collect. The rapidly growing energy storage industry is the key to a 100% sustainable energy landscape powered by renewables. Yet, a critical hurdle stands in the way of achieving this clean



ESS helps in the proper integration of RERs by balancing power during a power failure, thereby maintaining the stability of the electrical network by storage of energy during off-peak time with less cost [11]. Therefore, the authors have researched the detailed application of ESS for integrating with RERs for MG operations [12, 13]. Further, many researchers have ???



Energy storage systems allow for meeting customers' load demand services for extended period of time even when small renewable power generation system is used. PHES has offered another development incident whereby it allows for wind power integration forming a hybrid energy storage system known wind-hydro pumped storage (WHPSS) as



It will take them some time to do this, but Forsyth says that in three to five years from now, that could be a big threat for system integrators. Meanwhile, the energy storage divisions of solar inverter manufacturers SMA Sunbelt and Sungrow have already made incursions into the system integration space: both ranked in the IHS Markit top 10.



The book features a comprehensive overview of the various aspects of energy storage; Energy storage solutions with regard to providing electrical power, heat and fuel in light of the Energy ???

ENERGY STORAGE SYSTEM AND INTEGRATION



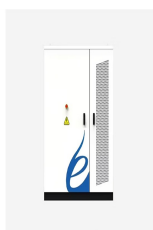
Due to the intermittent nature of wind power, the wind power integration into power systems brings inherent variability and uncertainty. The impact of wind power integration on the system stability and reliability is dependent on the penetration level [2] om the reliability perspective, at a relative low penetration level, the net-load fluctuations are comparable to ???



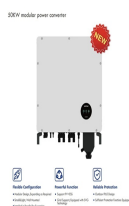
2MW / 5MWh
Customizable



1. Introduction. The chapter seeks to cover the essential aspects of the network integration of electrical energy storage (EES) systems. The chapter covers energy storage policy and markets, energy storage planning and operation, demonstration projects involving network integration of energy storage and energy storage modeling.



The integration of RES into existing grid infrastructure has proven difficult for power system operators who are used to managing a grid powered by fossil fuels. 3 As a result, adequate storage is required for the incorporation of renewable energy into any power system in order to protect the intermittent nature of renewable energy as well as



INTEGRATED DESIGN
EASY TO TRANSPORT AND INSTALL,
FLEXIBLE DEPLOYMENT



3 ? The various benefits of Energy Storage are help in bringing down the variability of generation in RE sources, improving grid stability, enabling energy/ peak shifting, providing ancillary support services, enabling larger renewable energy integration, brings down peak deficit and peak tariffs, reduction of carbon emissions, deferral of



Hence, this article reviews several energy storage technologies that are rapidly evolving to address the RES integration challenge, particularly compressed air energy storage ???

ENERGY STORAGE SYSTEM AND INTEGRATION



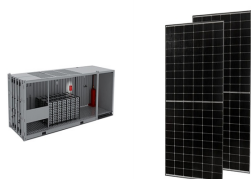
A battery energy storage system (BESS) is an electrochemical device that charges (or collects energy) from the grid or a power plant and then discharges that energy at a later time power system flexibility and enable high levels of renewable energy integration. Studies and real-world experience have demonstrated that



Wind energy integration into power systems presents inherent unpredictability because of the intermittent nature of wind energy. The penetration rate determines how wind energy integration affects system reliability and stability [4]. According to a reliability aspect, at a fairly low penetration rate, net-load variations are equivalent to current load variations [5], and ???



PDF | This book thoroughly investigates the pivotal role of Energy Storage Systems (ESS) in contemporary energy management and sustainability efforts. | Find, read and cite all the research you



As the penetration of variable renewable generation increases in power systems, issues, such as grid stiffness, larger frequency deviations, and grid stability, are becoming more relevant, particularly in view of 100% renewable energy networks, which is the future of smart grids. In this context, energy storage systems (ESSs) are proving to be ???



Moreover, as demonstrated in Fig. 1, heat is at the universal energy chain center creating a linkage between primary and secondary sources of energy, and its functional procedures (conversion, transferring, and storage) possess 90% of the whole energy budget worldwide [3]. Hence, thermal energy storage (TES) methods can contribute to more ???