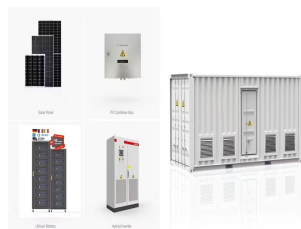


# ESWATINI FAR EAST BATTERY



Far East Battery | 2.604 Follower:innen auf LinkedIn. Green Energy Supplier & ESS Solution Provider | Founded in 2009, FEB is a leading provider of integrated solutions for lithium battery systems. With the ability to independently develop lithium cells, modules, and systems, etc., FEB can provide users with customized battery system solutions. FEB has two lithium battery ???



The cheapest way to get from Eswatini to East London costs only R 2 467, and the quickest way takes just 5 1/2 hours. Find the travel option that best suits you. Rome2Rio. How far is it from Eswatini to East London? The distance between Eswatini and East London is 1033 km. The road distance is 1142.9 km.



TQM Batteries is a prominent distributor and recycling entity for lead-acid automotive and motorcycle batteries. This company complies with the governmental regulations of Eswatini and was officially incorporated on November 15, 2008, under the Registration No. 1429 of 2008. Overseen by TQM Investments (PTY) LTD, their batteries are guaranteed to be free from ???



Times of Eswatini. 7 competitor-s for Far East Textiles 2021-12-08 - BY ASHMOND NZIMA MBABANE ??? Eswatini giant textile firm Far East Textiles has to shake off strong competitio-n from seven countries in the Regional Exporter Awards. After winning big in the inaugural National Exporter Awards a few months ago, the company led by businesswo



Riding on the east wind of the development of the new energy industry, the development pace of the Far East battery is accelerating. According to statistics, from January to June this year, the ???

# ESWATINI FAR EAST BATTERY



The company is registered according to the Government laws of Eswatini; incorporated on the 15 November 2008, Registration No. 1429 of 2008. These Batteries are administered by TQM Investments (PTY) LTD, and free of defects in material and workmanship under normal use and service conditions, and in terms of correct application.



MBABANE ??? After winning big in the inaugural National Exporter Awards a few months ago, eyes are on Matsapha-based Far East Textiles next week Wednesday. The company led by businesswoman Tokky Hou, who is a trailblazer in the textile industry, will compete in the Southern Africa Regional Exporters Awards. The countries are Eswatini, ???



The tiny Southern African kingdom of Eswatini has diplomatic ties with Israel going back over five decades, Anadolu Agency reports. Today, as Israel faces growing international isolation for its



Find company research, competitor information, contact details & financial data for FAR EAST TEXTILES(PROPRIETARY) LIMITED of MANZINI, Manzini. Get the latest business insights from Dun & Bradstreet.



The Kingdom of Eswatini, formerly known as Swaziland, is a small country bordered by Mozambique to the north-east and South Africa to the north, west and south. At no more than 200kms north to south and 130kms east to west, Eswatini is one of the smallest countries in Africa; despite this, its climate and topography are diverse, ranging from a



How far is it from East London to Eswatini? The distance between East London and Eswatini is 1034 km. The road distance is 1142.9 km. Get driving directions. Rome2Rio makes travelling from East London to Eswatini easy. Rome2Rio is a door-to-door travel information and booking

# ESWATINI FAR EAST BATTERY

---

engine, helping you get to and from any location in the world

# ESWATINI FAR EAST BATTERY



FAR EAST TEXTILES (PTY) LTD Matsapha Ind Sites Matsapha Eswatini. SearchInAfrica - Business Directory and online map for information on business, community, government, entertainment & recreation for Africa Eswatini Contact Details Phone: +268 251.., +268 251.., +268 251.. Directions: FROM HERE | TO HERE Business categories: Textiles



This project includes a 200kWh battery energy storage system (BESS) and is one of several ongoing projects by the Eswatini Electricity Company to improve the country's electricity access rates. This profile was published in the African Power & Energy Elites 2023. Read the full mobile-friendly magazine here.



Find company research, competitor information, contact details & financial data for FAREAST TEXTILE of MATSAPHA, Manzini. Get the latest business insights from Dun & Bradstreet.



FAR EAST BATTERY. Stock Code . Honor. About us Company Profile Honor Development Course FEB Culture. Product Center Battery Cells RESS Utility ESS Video Center Download Center. Social Responsibility. Contact us. Core Competence R & D Strength Quality Control Smart manufacturing. News Center Company News.



MBABANE ??? Eswatini Investment Promotion Authority (EIPA) and Far East Textiles are urging more emaSwati to increase their participation in the textile industry. Based in Matsapha, Far East Textiles is one of the biggest textile firms in the country and it is managed by Business Women of Eswatini (BWE) Chairperson Tokky Hou.

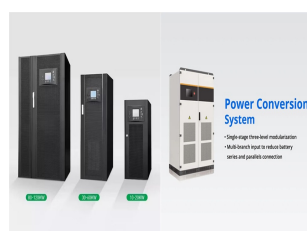


Second day at the 38th anniversary strategic annual meeting of Far East Battery. ???? With an eye on the future, we revealed our strategic vision and plans to help pave the way for the future of new energy. ???? Check out the video to catch a glimpse of the excitement! #NewEnergyFuture

# ESWATINI FAR EAST BATTERY



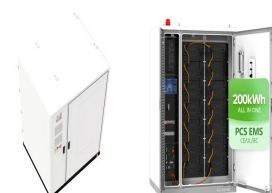
THE BATTERY CENTRE Matsapha Eswatini. SearchInAfrica - Business Directory and online map for information on business, community, government, entertainment & recreation for Africa. Eswatini Contact Details Phone: +268 251.. Directions: FROM HERE | TO HERE Business categories: Battery Dealers: All:



The Batemo Cell Model of the lithium-ion battery cell TENPOWER ICR18650-20SG1 is a high-precision, physical cell model with global validity. By clicking the ???Send Message" button you agree that Batemo forwards the information you provided to Far East Battery Jiangsu Co., Ltd, No.8, Keji Avenue, Gaocheng Town, Yixing City, 214200 Wuxi



This scenic route takes you through some of Eswatini's most rural communities. From Mbabane head north to Piggs Peak, taking in the scenery at Malolotja and stopping for lunch Maguga Dam. Head east after Piggs Peak, passing back down into the Nkomati Valley heading for Manzini.



The Batemo Cell Model of the lithium-ion battery cell Lishen LR1865LA is a high-precision, physical cell model with global validity. By clicking the ???Send Message" button you agree that Batemo forwards the information you provided to Far East Battery Jiangsu Co., Ltd, No.8, Keji Avenue, Gaocheng Town, Yixing City, 214200 Wuxi/Jiangsu