

# FACTORY INSTALLATION OF PHOTOVOLTAIC ENERGY STORAGE



Where can I find a report on photovoltaic system performance? IEC 61724-2 Photovoltaic system performance - Part 2: Capacity evaluation method IEC TS 61724-3 Photovoltaic system performance - Part 3: Energy evaluation method 138 This report is available at no cost from the National Renewable Energy Laboratory (NREL) at IEC 63019 Information Model for Availability (pending).



Can ice be used for installation of grid connected PV systems? ICE for Installation of Grid Connected PV Systems with Battery Energy Storage Systems Copyright 2020 While all care has been taken to ensure this guideline is free from omission and error, no responsibility can be taken for the use of this infor



How should a PV system be designed & installed? PV systems should be designed and installed with such possibilities in mind, and measures should have been incorporated such as two-column racks (rather than post-strut), thick or non-glass covers, rigid backsheets, and through-bolted clamps. The designer should specify PV modules with high ratings for both uplift and down-force pressure.



What is a PV system to be maintained? The definition of the PV system to be maintained shall include PV modules, the support structure, disconnects, inverter(s), monitoring equipment, and all other appurtenances to make the PV system complete, grid-connected, and operational.??? Example Description of Maintenance Services for Commercial Rooftop Installations



How to maintain a solar facility? Preventive Maintenance 1 Visual inspection of Solar Facility???s general site conditions, PV arrays, electrical equipment, mounting structure, fence, shading, trackers, vegetation, animal damage, erosion, corrosion, and discolored panels. 1x per year 2

# FACTORY INSTALLATION OF PHOTOVOLTAIC ENERGY STORAGE



How much of a PV module can be recycled? Demonstration projects at SolarWorld and commercial-scale recycling operations at First Solar have shown that 84% to 90% by weight of a PV module can be recycled (Larsen 2009). If a system transfers ownership, it is important to consider how warranties are handled.



What is commercial battery storage? Solar batteries, a key component in industrial battery storage, are large energy storage units typically found outside a building that charge up during sunny periods if linked up to a solar PV system, ???



Core Applications of BESS. The following are the core application scenarios of BESS: Commercial and Industrial Sectors ??? Peak Shaving: BESS is instrumental in managing abrupt surges in energy usage, effectively ???



Tesla has officially announced the start of production at its Shanghai energy storage factory, the company's first Megapack manufacturing facility outside the United States. While the public announcement came on ???



When the photovoltaic power generation does not meet the load use, the load is powered by photovoltaic + energy storage; If the photovoltaic + energy storage does not fully meet the use of the load, it will be introduced by ???

# FACTORY INSTALLATION OF PHOTOVOLTAIC ENERGY STORAGE



This study analyzed on-site installation cost and in-factory installation cost through factory information modeling, as well as job safety. Results reveal that integrating solar-plus ???



Our solar energy storage system stores excess photovoltaic generation for emergencies. Invest in your own distributed battery solar energy storage system to power your industrial business ???



Off grid energy storage systems rely on solar energy to generate electricity, batteries store electricity, and charge and discharge management and voltage regulation through controllers and inverters. Off grid energy storage ???



The hydrogen fuel cell generators have also been optimised for the amount of energy used at the factory. A 760kW solar power generation system was installed on the factory roof last year???a proportion of this generation is ???



Romania relaunches call for investment in battery storage for solar photovoltaic facilities. By Andy Colthorpe. February 9, 2024. Europe. Grid Scale, Connected Technologies. having got its first grid-scale BESS installation ???

# FACTORY INSTALLATION OF PHOTOVOLTAIC ENERGY STORAGE



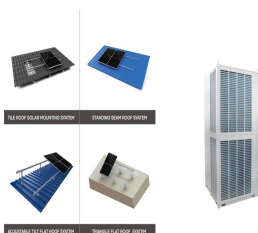
In addition, for users who purchase our photovoltaic energy products, wind turbine products, solar all in one street led light products, and solar air conditioning products, we will provide the paper version of installation ???



This project explored factory-installed solar plus storage (FISS) 1 to overcome first cost and installation barriers and bring this resiliency solution to scale for single-family ???



Sustainable energy procurement just got easier. Comau's patented Hyperflex mobile factory is an all-in-one system that automatically installs solar trackers (solar blades) directly in the photovoltaic field ??? at a rate of up to 30% more ???



Portuguese energy company EDP will test the construction of its first photovoltaic solar park in real-life, large-scale installation conditions in Spain using its Hyperflex automation technology.