

# FLAT NEW SOLAR PHOTOVOLTAIC PANELS



Flat roof solar PV for new build and retrofit projects. BauderSOLAR F and F XL. Range of solar PV panels to suit client's needs and budget. Lightweight system 9-12.5.kg/sq m, depending on the module selected. Single source for integrated design of waterproofing and PV.



Solar panel brackets. Solar panel inverter. Solar panel brackets. Installation i.e. labour costs of the installer. Cost of the solar battery storage system (although this is optional). Short answer: the average UK cost of a new domestic solar install is somewhere between ?5,000 and ?10,000. How much is a single solar panel in the UK?



Flat roof solar panel mounting is usually done with ballasts, which can also incur extra costs during purchase. Ballasts can be around ?60 to ?120 per kilowatt on average but prices can vary based on sizes and whether they offer "universal" mounting or only mount certain panel systems. They can also be quicker to install making them cheaper in terms of the ???



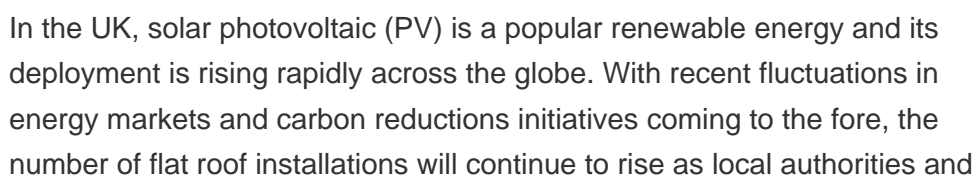
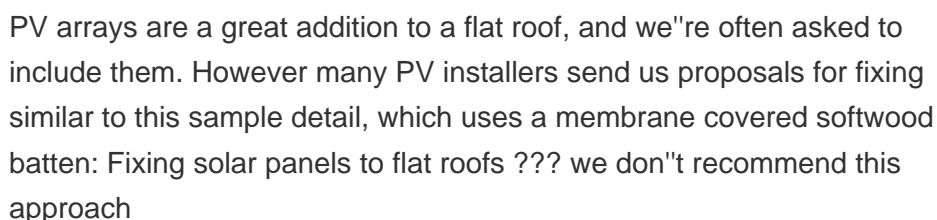
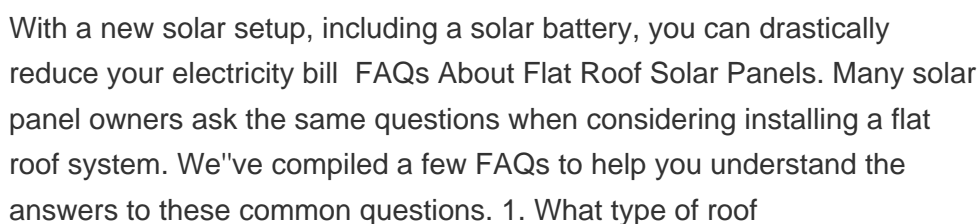
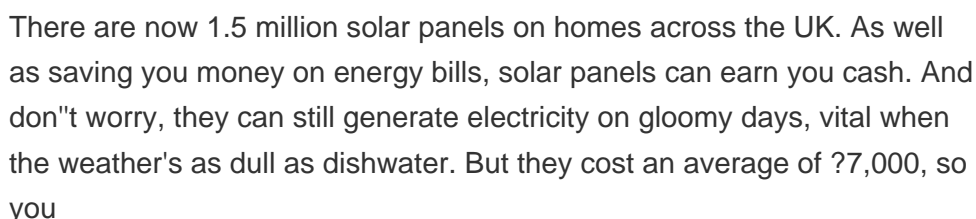
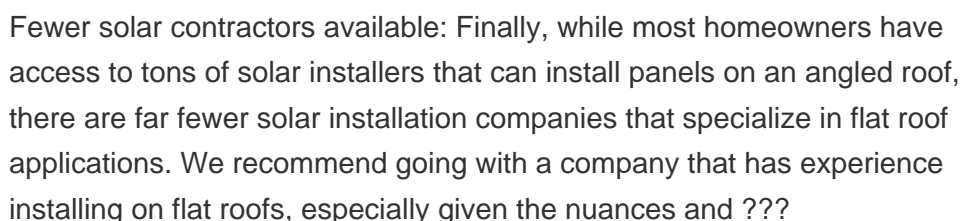
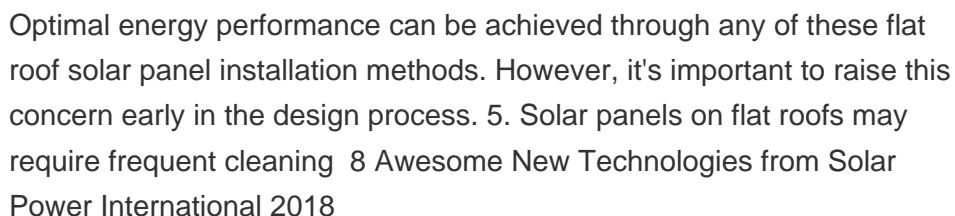
- BSEN 61853-1 Defining Solar Photovoltaics Power - BSEN 1991-1-4 Wind Actions on Structures - BRE Digest DG 489 rev 2014; BauderSOLAR PV solutions. Solar PV solutions for renewable energy generation on both new build and retrofit flat roof projects. Discover more. BauderSOLAR G ???



The flat roof solar panel array that is installed uses the same type of solar panel as a traditional system, but certain considerations need to be made. The array needs to be able to self-clean during rainy weather (pitched) and also avoid damage during strong winds.



For new builds and self-builds, you'll likely be looking at solar photovoltaic panels and/or solar hot water (solar thermal) systems. Instead of looking at options to traditional heating systems, solar panel installations can be added to new builds to improve the EPC and overall energy efficiency.



# FLAT NEW SOLAR PHOTOVOLTAIC PANELS

---

businesses look to reduce their carbon footprint and gain energy security  
for ???

# FLAT NEW SOLAR PHOTOVOLTAIC PANELS



A typical residential solar panel covers about 1.5 square metres, so even a small flat roof can accommodate a few panels. However, the more space you have, the more energy you can produce. Best type of solar panels for flat roofs. For the installation of solar photovoltaic panels on flat roofs, monocrystalline solar panels are often the best



Can you have solar panels on a flat roof? Solar panels work very effectively on flat roofs, but you'll need to make sure that you install them with the right mounting equipment to make the system efficient. Although flat ???



Maintenance of Solar Panels for a Flat Roof. Solar panels need some maintenance to ensure their best performance and longevity, even though they are a low-maintenance energy source. An installation of solar panels on a flat roof requires the following maintenance: Cleaning and Inspection. Solar panels' efficiency can be decreased over time by



A solar panel system is designed to capture sunlight for energy production, and the orientation of your roof will determine how much sunlight it receives throughout the day. The ideal orientation for a solar panel system in the northern hemisphere is south-facing, allowing the panels to receive maximum exposure to sunlight.



Solar Panel Installation Cost. The cost of a solar panel installation in NYC can vary depending on a number of factors, and it's not as straightforward as it may be in other areas of the country (even Long Island or New Jersey!). Making solar work on homes in the City is a science, and there's no one-size-fits-all solution.



While it's a bit more complicated than attaching panels to a house, your flat can benefit from solar panels if installed correctly. Installing a solar panel setup that covers all your energy costs is a major investment which can cost roughly ???

# FLAT NEW SOLAR PHOTOVOLTAIC PANELS



Solar panel prices have also dropped consistently over the past decade along with the advent of various solar panel grants and schemes that help you ease the purchase and installation costs. It's an ideal time to buy new panels, especially if you plan to keep living costs down, as they can alleviate more than £1,005 annually on your electricity bills in some cases (assuming they ???)



When installing Solar panels on a flat roof, this is easily achieved. As the Solar Panels are installed onto a bracket which tilts the panel to around 30 degrees. Flat Roof Solar panels are usually mounted onto a tub, ???



The total cost of installing solar panels typically ranges from \$12,000 to \$30,000. Of this 10% ??? 15% account for labor and installation costs. These costs are lower on a flat roof since it is safer and easier to access without the need for safety equipment.



Well, the answer is simple. The labour costs for flat roof solar panel installations is lower than a pitched roof. Approximately 10% of the cost of installing solar panel systems is attributed to the cost of labour and safety ???



The tables below reveal how much you should expect to pay for the supply and installation of a new, typical standard design solar PV system, including all fixings, inverter and control system. Are solar panels getting cheaper? Solar panel prices have increased over the past few years. The cost of a small scale solar installation (0-4kW

# FLAT NEW SOLAR PHOTOVOLTAIC PANELS



New methods in solar panel recycling have made great strides in avoiding harmful chemicals. 9Tech, an Italian startup, has developed an innovative method that recovers 99% of solar panel components while avoiding harmful emissions. designed to capture up to 66% more daylight than conventional flat cells. These solar cells feature small



Avoid the cost of tilting solar panels (but beware, the "specialised" flat solar panel cost might outweigh these savings). The Best Orientation And Tilt For Solar Panels In New Zealand. To get maximum solar generation in New Zealand, over a year, solar panels need to be facing north, tilted to a 25-degree slope in the North Island, and



Solar Panels for New Builds; SolarEdge Ecosystem; Solar Panel Car Port; Building Integrated Photovoltaics; We mainly use GSE integration and Solar Century kits. An in-roof solar panel system sits on top of the roofs battens and is then tiled or slated around. Installing solar panels on flat roofs is fairly simple to do. Generally, there



However, there are various considerations unique to flat roof solar panels. Exploring solar panel installation on flat roofs and the benefits and challenges to expect can ensure you make an informed decision. Quick Takeaways: Installing solar panels on flat roofs is possible and beneficial; You no longer need planning permission for the



Instead of simply laying solar panels flat on a sloped roof, your solar installer will likely use angled mounts. These mounts tilt your solar panels, exposing them to the sun for as much of the day as possible. The extra equipment typically results in a higher price tag for flat-roof solar panel systems.