

FLYWHEEL EFFECT ENERGY STORAGE



Flywheel is a rotating mechanical device used to store kinetic energy. It usually has a significant rotating inertia, and thus resists a sudden change in the rotational speed (Bitterly 1998; Bolund et al. 2007). With the increasing problem in environment and energy, flywheel energy storage, as a special type of mechanical energy storage technology, has extensive ???



One energy storage technology now arousing great interest is the flywheel energy storage systems (FESS), since this technology can offer many advantages as an energy storage solution over the



These systems work by having the electric motor accelerate the rotor to high speeds, effectively converting the original electrical energy into a stored form of rotational energy (i.e., angular momentum). The flywheel continues to store energy as long as it continues to spin; in this way, flywheel energy storage systems act as mechanical energy



Energy storage flywheel systems are mechanical devices that typically utilize an electrical machine (motor/generator unit) to convert electrical energy in mechanical energy and vice versa. Energy is stored in a fast-rotating mass known as the flywheel rotor. The rotor is subject to high centripetal forces requiring careful design, analysis, and fabrication to ensure the safe ???



The flywheel schematic shown in Fig. 11.1 can be considered as a system in which the flywheel rotor, defining storage, and the motor generator, defining power, are effectively separate machines that can be designed accordingly and matched to the application. This is not unlike pumped hydro or compressed air storage whereas for electrochemical storage, the ???

FLYWHEEL EFFECT ENERGY STORAGE



The flywheel storage technology is best suited for applications where the discharge times are between 10 s to two minutes. With the obvious discharge limitations of other electrochemical storage technologies, such as traditional capacitors (and even supercapacitors) and batteries, the former providing solely high power density and discharge times around 1 s ???



One energy storage technology now arousing great interest is the flywheel energy storage systems (FESS), since this technology can offer many advantages as an energy storage solution over the alternatives. For example, the potter's wheel was used as a rotatory object using the flywheel effect to maintain its energy under its own inertia



REVIEW OF FLYWHEEL ENERGY STORAGE SYSTEM Zhou Long, Qi Zhiping Institute of Electrical Engineering, CAS Qian yan Department, P.O. box 2703 Beijing 100080, China zhoulong@mail.iee.ac.cn, qzp@mail.iee.ac.cn ABSTRACT As a clean energy storage method with high energy density, flywheel energy storage (FES) rekindles wide range



In the field of flywheel energy storage systems, only two bearing concepts have been established to date: 1. Rolling bearings, spindle bearings of the & #x201C;High Precision Series& #x201D; are usually used here.. 2. Active magnetic bearings, usually so-called HTS (high-temperature superconducting) magnetic bearings.. A typical structure consisting of rolling ???



This can be achieved by high power-density storage, such as a high-speed Flywheel Energy Storage System (FESS). It is shown that a variable-mass flywheel can effectively utilise the FESS useable capacity in most transients close to optimal. Novel variable capacities FESS is proposed by introducing Dual-Inertia FESS (DIFESS) for EVs.

FLYWHEEL EFFECT ENERGY STORAGE



The core element of a flywheel consists of a rotating mass, typically axisymmetric, which stores rotary kinetic energy E according to (Equation 1) $E = \frac{1}{2} I \omega^2$ [J], where E is the stored kinetic energy, I is the flywheel moment of inertia [kgm²], and ω is the angular speed [rad/s]. In order to facilitate storage and extraction of electrical energy, the rotor ???



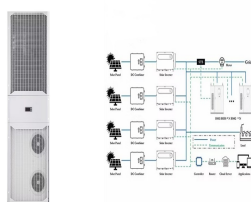
Energy storage systems (ESSs) are the technologies that have driven our society to an extent where the management of the electrical network is easily feasible. The flywheel works under the effect of maintaining its energy by its inertia. 43 Potter's wheel is an example used as a rotatory object that undergoes the effect. More of it, such as



A flywheel energy storage (FES) system can be easily constructed using various components illustrated in Fig. 4. The FES system is split into three major sections generation using renewable energy, storage, and the electrical load. Geometry modification of flywheels and its effect on energy storage. Int. J. Energy Res., 2015 (6) (2015), pp



Traditional flywheel energy storage uses permanent magnet motor as the driving motor, full power converter and a large amount of non-ferrous and rare metal requirements, which greatly increases the investment cost. which achieves the expected effect. In addition, the hybrid energy storage based on double-fed flywheel and lithium battery can



This concise treatise on electric flywheel energy storage describes the fundamentals underpinning the technology and system elements. Steel and composite rotors are compared, including geometric effects and not just specific strength. A simple method of costing is described based on separating out power and energy showing potential for low power cost ???



Flywheel energy storage systems are feasible for short-duration applications, which are crucial for the reliability of an electrical grid with large renewable energy penetration. Fossil fuel depletion and the environmental effects of global warming are the main drivers behind the

FLYWHEEL EFFECT ENERGY STORAGE

rapid penetration of renewables, such as wind and solar, in

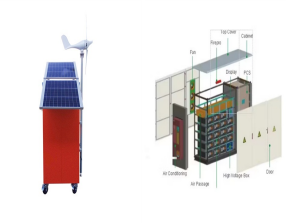
FLYWHEEL EFFECT ENERGY STORAGE



Thanks to the unique advantages such as long life cycles, high power density, minimal environmental impact, and high power quality such as fast response and voltage stability, the flywheel/kinetic energy storage system (FESS) is gaining attention recently. There is noticeable progress made in FESS, especially in utility, large-scale deployment for the ???



Electrical energy is generated by rotating the flywheel around its own shaft, to which the motor-generator is connected. The design arrangements of such systems depend mainly on the shape and type



As a stable and effective energy storage device, the FESS has recently found a widespread application in renewable energy fields such as wind power generation, photovoltaic power generation, electric vehicles, fuel cells and other distributed power generation systems, mainly to solve the problems of transient power output imbalance and slow dynamic response ???



In physics, a flywheel is a rotating disk that stores kinetic energy in its momentum and then spins that energy out to a nearby engine. In the context of business, as the flywheel rotates, it

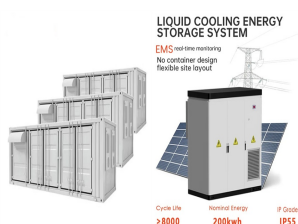


Today, flywheel energy storage systems are used for ride-through energy for a variety of demanding applications surpassing chemical batteries. Power brownouts, surges and outages can have devastating effects on MRI equipment. Often, electricity from the power substation to a hospital is not consistent for MRI and CT operations as voltage

FLYWHEEL EFFECT ENERGY STORAGE



2. Description of Flywheel Energy Storage System 2.1. Background The flywheel as a means of energy storage has existed for thousands of years as one of the earliest mechanical energy storage systems. For example, the potter's wheel was used as a rotatory object using the flywheel effect to maintain its energy under its own inertia [21].



The hybrid energy storage system consists of 1 MW FESS and 4 MW Lithium BESS. With flywheel energy storage and battery energy storage hybrid energy storage, In the area where the grid frequency is frequently disturbed, the flywheel energy storage device is frequently operated during the wind farm power output disturbing frequently.



This review presents a detailed summary of the latest technologies used in flywheel energy storage systems (FESS). This paper covers the types of technologies and systems employed within FESS, the range of materials used in the production of FESS, and the reasons for the use of these materials. Furthermore, this paper provides an overview of the



Flywheel energy storage From Wikipedia, the free encyclopedia Flywheel energy storage (FES) works by accelerating a rotor efficiency 2.4 Energy storage effects 2.5 Effects of angular momentum in vehicles 3 Applications 3.1 Transportation 3.2 Uninterruptible power supplies 3.3 Laboratories



An overview of system components for a flywheel energy storage system. Fig. 2. A typical flywheel energy storage system [11], which includes a flywheel/rotor, an electric machine, bearings, and power electronics. Fig. 3. The Beacon Power Flywheel [12], which includes a composite rotor and an electric machine, is designed for frequency



With the increasing pressure on energy and the environment, vehicle brake energy recovery technology is increasingly focused on reducing energy consumption effectively. Based on the magnetization effect of permanent magnets, this paper presents a novel type of magnetic

FLYWHEEL EFFECT ENERGY STORAGE

coupling flywheel energy storage device by combining flywheel energy storage with ???

FLYWHEEL EFFECT ENERGY STORAGE



This question is not simple to answer since there are other changes taking place which will greatly affect the future with great interdependency. Taking first the technical front, the predicted mass take up of electric vehicles will have a substantial effect on grid balancing. "A Review of Flywheel Energy Storage System Technologies and



The flywheel is the main energy storage component in the flywheel energy storage system, and it can only achieve high energy storage density when rotating at high speeds. There is also one investigation on different design approaches, choices of subsystems, and the effects on performance, cost, and applications [6, 21].



The main components of a typical flywheel. A typical system consists of a flywheel supported by rolling-element bearing connected to a motor???generator. The flywheel and sometimes motor???generator may be enclosed in a vacuum chamber to reduce friction and energy loss.. First-generation flywheel energy-storage systems use a large steel flywheel rotating on mechanical ???



The operation of the electricity network has grown more complex due to the increased adoption of renewable energy resources, such as wind and solar power. Using energy storage technology can improve the stability and quality of the power grid. One such technology is flywheel energy storage systems (FESSs). Compared with other energy storage systems, ???