

FLYWHEEL ENERGY STORAGE 039



This paper presents an overview of the flywheel as a promising energy storage element. Electrical machines used with flywheels are surveyed along with their control techniques. Loss minimization



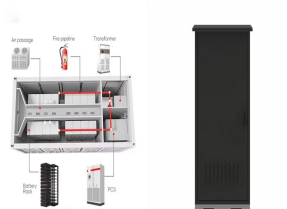
Flywheel energy storage (FES) is a technology that stores kinetic energy through rotational motion. The stored energy can be used to generate electricity when needed. Flywheels have been used for centuries, but modern FES systems use advanced materials and design techniques to achieve higher efficiency, longer life, and lower maintenance costs.



The cost invested in the storage of energy can be levied off in many ways such as (1) by charging consumers for energy consumed; (2) increased profit from more energy produced; (3) income increased by improved assistance; (4) reduced charge of demand; (5) control over losses, and (6) more revenue to be collected from renewable sources of energy



A flywheel energy storage system employed by NASA (Reference: wikipedia) How Flywheel Energy Storage Systems Work? Flywheel energy storage systems employ kinetic energy stored in a rotating mass to store energy with minimal frictional losses. An integrated motora??generator uses electric energy to propel the mass to speed. Using the same



Switzerland-headquartered battery and storage system provider Leclanche emailed Energy-Storage.news this week to announce that what began as a small-scale pilot of the twinned technologies has now gone to grid part-owned by flywheel manufacturer and supplier S4 Energy. S4's partner in the JV is a local government-owned entity

FLYWHEEL ENERGY STORAGE 039



OverviewMain componentsPhysical characteristicsApplicationsComparison to electric batteriesSee alsoFurther readingExternal links



OXTO will install an 800kW flywheel energy storage system for a tea manufacturing company in Kenya. The OXTO flywheel will operate as UPS system by covering both power and voltage fluctuation and diesel genset trips to increase productivity. The system will also create power system stability and enable less diesel fuel consumption.



Flywheel Energy Storage (FES) systems refer to the contemporary rotor-flywheels that are being used across many industries to store mechanical or electrical energy. Instead of using large iron wheels and ball bearings, advanced FES systems have rotors made of specialised high-strength materials suspended over frictionless magnetic bearings



The anatomy of a flywheel energy storage device. Image used courtesy of Sino Voltaics . A major benefit of a flywheel as opposed to a conventional battery is that their expected service life is not dependent on the number of charging cycles or age. The more one charges and discharges the device in a standard battery, the more it degrades.



One of the main problems of introducing energy systems using renewable energy sources is its dependence on climatic conditions during the year. The instability of incoming energy leads to significant fluctuations in power, voltage and frequency of alternating current in the network. Modern technologies do not yet allow achieving sustainable energy a?|



The core element of a flywheel consists of a rotating mass, typically axisymmetric, which stores rotary kinetic energy E according to (Equation 1) $E = \frac{1}{2} I \omega^2$ [J], where E is the stored kinetic energy, I is the flywheel moment of inertia [kgm²], and ω is the angular speed [rad/s]. In order to

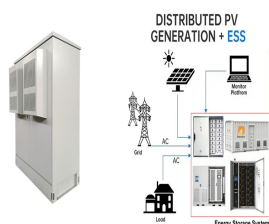
FLYWHEEL ENERGY STORAGE 039

facilitate storage and extraction of electrical energy, the rotor a?|

FLYWHEEL ENERGY STORAGE 039



The flywheel energy storage system (FESS) offers a fast dynamic response, high power and energy densities, high efficiency, good reliability, long lifetime and low maintenance requirements, and is particularly suitable for applications where high power for short-time bursts is demanded. FESS is gaining increasing attention and is regarded as a



Design of flywheel energy storage system Flywheel systems are best suited for peak output powers of 100 kW to 2 MW and for durations of 12 seconds to 60 seconds . The energy is present in the flywheel to provide higher power for a shorter duration, the peak output designed for 125 kw for 16 seconds stores enough energy to provide 2 MW for 1



The main components of a typical flywheel. A typical system consists of a flywheel supported by rolling-element bearing connected to a motor/generator. The flywheel and sometimes motor/generator may be enclosed in a vacuum chamber to reduce friction and energy loss.. First-generation flywheel energy-storage systems use a large steel flywheel rotating on mechanical shafts



NASA G2. i 1/4 ?i 1/4 ? Flywheel energy storage,i 1/4 ?FESi 1/4 ?,i 1/4 ?i 1/4 ?,a?? ,,i 1/4 ?,



Video Credit: NAVAJO Company on The Pros and Cons of Flywheel Energy Storage. Flywheels are an excellent mechanism of energy storage for a range of reasons, starting with their high efficiency level of 90% and estimated long lifespan. Flywheels can be expected to last upwards of 20 years and cycle more than 20,000 times, which is high in a?

FLYWHEEL ENERGY STORAGE 039



The ecological and sustainable energy storage. The ENERGIESTRO flywheel is the ideal storage for large solar power plants in desert areas. The VOSS project has received funding from the European Union's Horizon 2020 research and a?|



2MW / 5MWh
Customizable



The flywheel schematic shown in Fig. 11.1 can be considered as a system in which the flywheel rotor, defining storage, and the motor generator, defining power, are effectively separate machines that can be designed accordingly and matched to the application. This is not unlike pumped hydro or compressed air storage whereas for electrochemical storage, the a?|



Flywheel energy storage systems are feasible for short-duration applications, which are crucial for the reliability of an electrical grid with large renewable energy penetration. Flywheel energy storage system use is increasing, which has encouraged research in design improvement, performance optimization, and cost analysis.



Energy storage systems (ESSs) are the technologies that have driven our society to an extent where the management of the electrical network is easily feasible. The balance in supply a?|



2MW / 5MWh
Customizable

Lets check the pros and cons on flywheel energy storage and whether those apply to domestic use ():Compared with other ways to store electricity, FES systems have long lifetimes (lasting decades with little or no maintenance;[2] full-cycle lifetimes quoted for flywheels range from in excess of 10 5, up to 10 7, cycles of use),[5] high specific energy (100a??130 a?|

FLYWHEEL ENERGY STORAGE 039



The flywheel stores energy in a spinning rotor that is connected to an electric motor that converts electrical energy into mechanical energy. To recover the energy, the motor is electrically reversed and used as a generator to slow down the flywheel converting the mechanical energy back into electrical energy. Amber Kinetics will improve the



Today, flywheel energy storage systems are used for ride-through energy for a variety of demanding applications surpassing chemical batteries. A flywheel system stores energy mechanically in the form of kinetic energy by spinning a mass at high speed. Electrical inputs spin the flywheel rotor and keep it spinning until called upon to release



Energy storage flywheel systems are mechanical devices that typically utilize an electrical machine (motor/generator unit) to convert electrical energy in mechanical energy and vice versa. Energy is stored in a fast-rotating mass known as the flywheel rotor. The rotor is subject to high centripetal forces requiring careful design, analysis, and fabrication to ensure the safe a?|



In electric vehicles (EV) charging systems, energy storage systems (ESS) are commonly integrated to supplement PV power and store excess energy for later use during low generation and on-peak periods to mitigate utility grid congestion. Batteries and supercapacitors are the most popular technologies used in ESS. High-speed flywheels are an emerging a?|



Forming Network (PFN) energy storage candidates are capacitors and pulse generators (e.g. compulsator) with flywheel energy storage . The cyclic capability of the [8] flywheel may also allow for recovery and re-use of energy that remains in the rails and bus work. It may be possible to have an energy storage system based

FLYWHEEL ENERGY STORAGE 039



The flywheel energy storage system (FESS) offers a fast dynamic response, high power and energy densities, high efficiency, good reliability, long lifetime and low maintenance requirements, and is



In supporting the stable operation of high-penetration renewable energy grids, flywheel energy storage systems undergo frequent chargea??discharge cycles, resulting in significant stress fluctuations in the rotor core. This paper investigates the fatigue life of flywheel energy storage rotors fabricated from 30Cr2Ni4MoV alloy steel, attempting to elucidate the a?|