

# FLYWHEEL ENERGY STORAGE FIJI



What is a flywheel energy storage system? A flywheel energy storage system is a mechanical device used to store energy through rotational motion. When excess electricity is available, it is used to accelerate a flywheel to a very high speed. The energy is stored as kinetic energy and can be retrieved by slowing down the flywheel, converting the motion back into electricity.



Could flywheels be the future of energy storage? Flywheels, one of the earliest forms of energy storage, could play a significant role in the transformation of the electrical power system into one that is fully sustainable yet low cost.



What is the difference between a flywheel and a battery storage system? Flywheel Systems are more suited for applications that require rapid energy bursts, such as power grid stabilization, frequency regulation, and backup power for critical infrastructure. Battery Storage is typically a better choice for long-term energy storage, such as for renewable energy systems (solar or wind) or home energy storage.



Are flywheel systems a good choice for solar power generation? Flywheel systems are ideal for this form of energy time-shifting. Here's why: Solar power generation peaks in the middle of the day, but energy demand peaks in the late afternoon and early evening. Flywheels can quickly absorb excess solar energy during the day and rapidly discharge it as demand increases.



How much energy does a flywheel store? Indeed, the development of high strength, low-density carbon fiber composites (CFCs) in the 1970s generated renewed interest in flywheel energy storage. Based on design strengths typically used in commercial flywheels,  $\sigma_{max}$  is around 600 kNm/kg for CFC, whereas for wrought flywheel steels, it is around 75 kNm/kg.

# FLYWHEEL ENERGY STORAGE FIJI



How does a flywheel work? Here's a breakdown of the process:

**Energy Absorption:** When there's surplus electricity, such as when the grid is overproducing energy, the system uses that excess power to accelerate the flywheel. This energy is stored as kinetic energy, much like how the figure skater speeds up their spin by pulling in their arms.



Flywheel energy storage systems are feasible for short-duration applications, which are crucial for the reliability of an electrical grid with large renewable energy penetration.



Asia Pacific Flywheel Energy Storage Market Size, 2024 (USD Million) ,  
???



**Pic Credit: Energy Storage News** A Global Milestone. This project sets a new benchmark in energy storage. Previously, the largest flywheel energy storage system was the Beacon Power flywheel station in Stephentown, New York.



The Torus Station's hardware includes flywheel and battery energy storage technologies. Image: Torus Inc. Real estate development company Gardner has signed an agreement with technology provider Torus to build a 100MW/4-hour energy storage system.



The flywheel energy storage system is useful in converting mechanical energy to electric energy and back again with the help of fast-spinning flywheels. This system is composed of four key parts: a solid rotor, a high-speed motor, a power electronics converter, and a control system.

# FLYWHEEL ENERGY STORAGE FIJI



Article "A Flywheel Energy Storage System in a Microgrid for Powering Small Villages in Remote Islands in the South Pacific" Detailed information of the J-GLOBAL is a service based on the ???



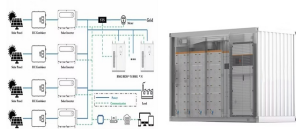
Torus" Nova Spin flywheel energy storage system. Image: Torus. Utility Rocky Mountain Power (RMP) and technology provider Torus have signed a memorandum of understanding (MOU) outlining a strategic partnership and ???



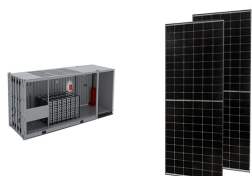
Flywheel Energy Storage Systems (FESS) work by storing energy in the form of kinetic energy within a rotating mass, known as a flywheel. Here's the working principle explained in simple way, Energy Storage: The system ???



Pictured above, it has a total installed capacity of 30MW with 120 high-speed magnetic levitation flywheel units. Every 12 units create an energy storage and frequency regulation unit, the firm said, with the 12 combining to ???



In a flywheel energy storage system, electrical energy is used to spin a flywheel at incredibly high speeds. The flywheel, made of durable materials like composite carbon fiber, stores energy in the form of rotational kinetic energy. ???



The flywheel energy storage system (FESS) offers a fast dynamic response, high power and energy densities, high efficiency, good reliability, long lifetime and low maintenance requirements, and is

# FLYWHEEL ENERGY STORAGE FIJI

---



A flywheel energy storage system stores energy mechanically rather than chemically. It operates by converting electrical energy into rotational kinetic energy, where a heavy rotor (the flywheel) spins at high speed within a ???



Optimized flywheel performance, electro-mechanical coupling, safety and environmental impact are all addressed in the development, alongside other crucial technical consideration and state ???



The flywheel energy storage operating principle has many parallels with conventional battery-based energy storage. The flywheel goes through three stages during an operational cycle, like all types of energy storage systems: ???