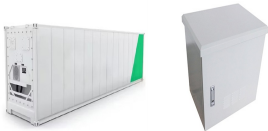


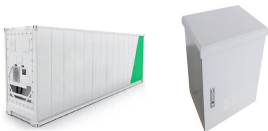
FLYWHEEL ENERGY STORAGE IS INSUFFICIENT



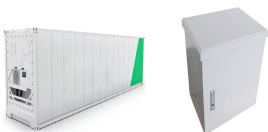
What is the performance of Flywheel energy storage systems? The performance of flywheel energy storage systems operating in magnetic bearing and vacuum is high. Flywheel energy storage systems have a long working life if periodically maintained (>25 years). The cycle numbers of flywheel energy storage systems are very high (>100,000).



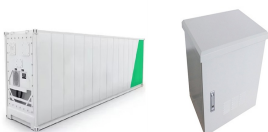
What are the disadvantages of Flywheel energy storage systems? One of the most important issues of flywheel energy storage systems is safety. As a result of mechanical failure, the rotating object fails during high rotational speed poses a serious danger. One of the disadvantages of these storage systems is noise. It is generally located underground to eliminate this problem.



Can small applications be used instead of large flywheel energy storage systems? Small applications connected in parallel can be used instead of large flywheel energy storage systems. There are losses due to air friction and bearing in flywheel energy storage systems. These cause energy losses with self-discharge in the flywheel energy storage system.

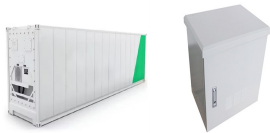


Could flywheels be the future of energy storage? Flywheels, one of the earliest forms of energy storage, could play a significant role in the transformation of the electrical power system into one that is fully sustainable yet low cost.

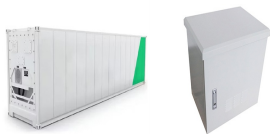


What are the advantages of flywheel ESS (fess)? Flywheel energy storage systems (FESS) have several advantages, including being eco-friendly, storing energy up to megajoules (MJ), high power density, longer life cycle, higher rate of charge and discharge cycle, and greater efficiency.

FLYWHEEL ENERGY STORAGE IS INSUFFICIENT



What are the components of a flywheel energy storage system? A typical flywheel energy storage system includes a flywheel/rotor, an electric machine, bearings, and power electronics. Fig. 3. The Beacon Power Flywheel, which includes a composite rotor and an electric machine, is designed for frequency regulation.



Overview of Control System Topology of Flywheel Energy Storage System in Renewable Energy Application for Alternative Power Plant. wind turbine or battery or other source can stabilize the power conditioning to ???



The performance of flywheel energy storage is the topic of the article. We will provide some solutions to improve the performance of flywheel energy storage. where the issue of insufficient energy density is prominent. | Heat Dissipation ???



This paper studies the cooperative control problem of flywheel energy storage matrix systems (FESMS). The aim of the cooperative control is to achieve two objectives: the ???

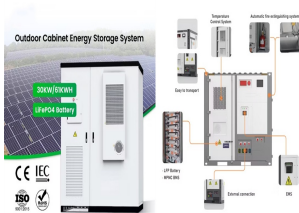


This concise treatise on electric flywheel energy storage describes the fundamentals underpinning the technology and system elements. Steel and composite rotors are compared, including geometric effects and not just ???

FLYWHEEL ENERGY STORAGE IS INSUFFICIENT



Flywheel Energy Storage Systems (FESS) work by storing energy in the form of kinetic energy within a rotating mass, known as a flywheel. Here's the working principle explained in simple way, Energy Storage: The system ???



Flywheel energy storage has significant advantages, including fast response speed, high power density, long lifespan, and environmental friendliness. Compared with traditional chemical batteries, flywheel energy storage ???



A flywheel energy storage system stores energy mechanically rather than chemically. It operates by converting electrical energy into rotational kinetic energy, where a heavy rotor (the flywheel) spins at high speed within a ???



Electrical flywheels are kept spinning at a desired state of charge, and a more useful measure of performance is standby power loss, as opposed to rundown time. Standby power loss can be minimized by means of a good ???

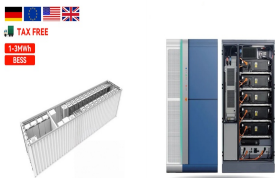


If we have access to more energy than we need at a given time, it is often beneficial to store the extra energy for future use. This process is called energy storage most cases, electricity is converted to another form of energy (such ???)

FLYWHEEL ENERGY STORAGE IS INSUFFICIENT



Flywheel energy storage systems are feasible for short-duration applications, which are crucial for the reliability of an electrical grid with large renewable energy penetration. ???



In essence, a flywheel stores and releases energy just like a figure skater harnessing and controlling their spinning momentum, offering fast, efficient, and long-lasting energy storage. Components of a Flywheel Energy Storage ???