

FLYWHEEL ENERGY STORAGE VOLTAGE

SUPPORT REAL-TIME ONLINE
MONITORING OF SYSTEM STATUS



What is a flywheel energy storage system? A flywheel energy storage system for fault ride through support of grid-connected VSC HVDC-based offshore wind farms. IEEE Trans. Power Syst. 2015, 31, 1671???1680. [Google Scholar] [CrossRef] Taraft, S.; Rekioua, D.; Aouzellag, D. Wind power control system associated to the flywheel energy storage system connected to the grid.

SUPPORT REAL-TIME ONLINE
MONITORING OF SYSTEM STATUS



What is a flywheel/kinetic energy storage system (fess)? Thanks to the unique advantages such as long life cycles, high power density, minimal environmental impact, and high power quality such as fast response and voltage stability, the flywheel/kinetic energy storage system (FESS) is gaining attention recently.

SUPPORT REAL-TIME ONLINE
MONITORING OF SYSTEM STATUS



Why do flywheel energy storage systems have a high speed? There are losses due to air friction and bearing in flywheel energy storage systems. These cause energy losses with self-discharge in the flywheel energy storage system. The high speeds have been achieved in the rotating body with the developments in the field of composite materials.

SUPPORT REAL-TIME ONLINE
MONITORING OF SYSTEM STATUS



What are control strategies for flywheel energy storage systems? Control Strategies for Flywheel Energy Storage Systems Control strategies for FESSs are crucial to ensuring the optimal operation, efficiency, and reliability of these systems.

SUPPORT REAL-TIME ONLINE
MONITORING OF SYSTEM STATUS



How long does a flywheel energy storage system last? Flywheel energy storage systems have a long working life if periodically maintained (>25 years). The cycle numbers of flywheel energy storage systems are very high (>100,000). In addition, this storage technology is not affected by weather and climatic conditions. One of the most important issues of flywheel energy storage systems is safety.

FLYWHEEL ENERGY STORAGE VOLTAGE

SUPPORT REAL-TIME ONLINE
MONITORING OF SYSTEM STATUS



Can small applications be used instead of large flywheel energy storage systems? Small applications connected in parallel can be used instead of large flywheel energy storage systems. There are losses due to air friction and bearing in flywheel energy storage systems. These cause energy losses with self-discharge in the flywheel energy storage system.

SUPPORT REAL-TIME ONLINE
MONITORING OF SYSTEM STATUS



Energy Storage Systems (ESSs) play a very important role in today's world, for instance next-generation of smart grid without energy storage is the same as a computer without a hard drive [1]. Several kinds of ESSs are used in electrical system such as Pumped Hydro Storage (PHS) [2], Compressed-Air Energy Storage (CAES) [3], Battery Energy Storage (BES) ???



This review presents a detailed summary of the latest technologies used in flywheel energy storage systems (FESS). This paper covers the types of technologies and systems employed within FESS, the range of materials used in the production of FESS, and the reasons for the use of these materials. Furthermore, this paper provides an overview of the ???



A series voltage injection type flywheel energy storage system is used to mitigate voltage sags. The basic circuit flywheel energy storage system and with a power converter interface using



balance in supply-demand, stability, voltage and frequency lag control, and improvement in power quality are the significant attributes that fascinate the world toward the ESS technology. However, being one of the oldest ESS, the fly- PHESS, pumped hydro energy storage system; FESS, flywheel energy storage system; UPS, uninterruptible power

FLYWHEEL ENERGY STORAGE VOLTAGE



This can be achieved by high power-density storage, such as a high-speed Flywheel Energy Storage System (FESS). It is shown that a variable-mass flywheel can effectively utilise the FESS useable capacity in most transients close to optimal. Novel variable capacities FESS is proposed by introducing Dual-Inertia FESS (DIFESS) for EVs.



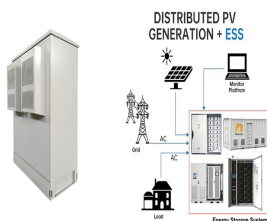
Low-voltage ride-through control strategy for flywheel energy storage system. Xuechen Zheng, Xuechen Zheng. With the wide application of flywheel energy storage system (FESS) in power systems, especially under changing grid conditions, the low-voltage ride-through (LVRT) problem has become an important challenge limiting their performance.



This paper presents design, optimization, and analysis of a flywheel energy storage system (FESS) used as a Dynamic Voltage Restorer (DVR). The first purpose of the study was to design a flywheel with a natural resonance frequency outside the operating frequency range of the FESS. The second purpose of the study was to show that a matrix ???



The core element of a flywheel consists of a rotating mass, typically axisymmetric, which stores rotary kinetic energy E according to (Equation 1) $E = \frac{1}{2} I \omega^2$ [J], where E is the stored kinetic energy, I is the flywheel moment of inertia [kgm²], and ω is the angular speed [rad/s]. In order to facilitate storage and extraction of electrical energy, the rotor ???



The flywheel energy storage system (FESS) offers a fast dynamic response, high power and energy densities, high efficiency, good reliability, long lifetime and low maintenance ???



Abstract The direct current (DC)-link voltage control of the flywheel energy storage system plays an important role in realizing high-quality grid connection. With the traditional proportional-inte

FLYWHEEL ENERGY STORAGE VOLTAGE



This paper establishes the flywheel energy storage organization (FESS) in a long lifetime uninterruptible power supply. The Flywheel Energy Storage (FES) system has emerged as one of the best options.



Section 3 analyzes the impact of grid voltage dips on the flywheel energy storage grid-connected system, mathematically models the machine-side converter and the grid-side converter, and ???



Our flywheel will be run on a number of different grid stabilization scenarios. KENYA ??? TEA FACTORY. OXTO will install an 800kW flywheel energy storage system for a tea manufacturing company in Kenya. The OXTO flywheel will operate as UPS system by covering both power and voltage fluctuation and diesel genset trips to increase productivity.



The mechanical flywheel energy storage system would in turn effectively power a 12-volt DC appliance. However, due to voltage spikes from the flywheel motor assembly being rejected by the AC-DC inverter, the load was changed to a 12-volt ???



Thanks to the unique advantages such as long life cycles, high power density and quality, and minimal environmental impact, the flywheel/kinetic energy storage system (FESS) is gaining steam recently.

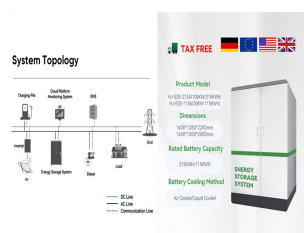
FLYWHEEL ENERGY STORAGE VOLTAGE



DOI: 10.1109/IEMDC.2003.1210699 Corpus ID: 110739062; Modeling and analysis of a flywheel energy storage system for voltage sag correction @article{Samineni2003ModelingAA, title={Modeling and analysis of a flywheel energy storage system for voltage sag correction}, author={Satish Samineni and B.K. Johnson and Herbert L. Hess and Joseph Law}, ???



The flywheel energy storage system (FESS) has been attracting the attention of national and international academicians gradually with its benefits such as high Reference 18 applied the ADRC technique to the control strategy of a microgrid with hybrid energy storage to decrease the DC bus voltage swings and improve the grid connection



The new-generation Flywheel Energy Storage System (FESS), which uses High-Temperature Superconductors (HTS) for magnetic levitation and stabilization, is a novel energy storage technology. Due to its quick response time, high power density, low losses, and large number of charging/discharging cycles, the high-speed FESS is especially suitable for enhancing power ???



Energy storage systems (ESSs) are the technologies that have driven our society to an extent where the management of the electrical network is easily feasible. The balance in supply ???



Since the flywheel energy storage system requires high-power operation, when the inductive voltage drop of the motor increases, resulting in a large phase difference between the motor terminal voltage and the motor counter-electromotive force, the angle is compensated and corrected at high power, so that the active power can be boosted.

FLYWHEEL ENERGY STORAGE VOLTAGE



Energy storage Flywheel Renewable energy Battery Magnetic bearing A B S T R A C T Thanks to the unique advantages such as long life cycles, high power density, minimal environmental impact, and high power quality such as fast response and voltage stability, the flywheel/kinetic energy storage system (FESS) is gaining attention recently.



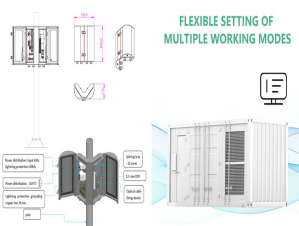
Ein Schwungrad-Energiespeichersystem (Flywheel Energy Storage System, FESS) kann schnell grosse Leistungsmengen einspeisen oder aufnehmen, um das Netz nach einer abrupten Änderung der Erzeugung oder des Verbrauchs zu unterstützen. Integration of Flywheel Energy Storage Systems in Low Voltage Distribution Grids. Karrari, Shahab; Noe, M



Flywheel energy storage has fast charge and discharge speed, and it is capable of discharge huge power in a very short time. So it has become a wise choice to solve power quality problems. This paper describes a Dynamic Voltage Restorer (DVR) using flywheel energy storage (FES) to protect the critical load from voltage sags in distribution network. The flywheel unit is ???



A Photovoltaic solar system is used as a primary source from which the required DC voltage is obtained through an SPWM-based DC-DC converter. This power is fed to an arrangement consisting of a BLDC machine as prime mover, which drives a mass of flywheel. A flywheel energy storage (FES) system can be easily constructed using various



1 Introduction. Among all options for high energy store/restore purpose, flywheel energy storage system (FESS) has been considered again in recent years due to their impressive characteristics which are long cyclic endurance, high power density, low capital costs for short time energy storage (from seconds up to few minutes) and long lifespan [1, 2].

FLYWHEEL ENERGY STORAGE VOLTAGE



The components of a flywheel energy storage systems are shown schematically in Fig. As for the system response time to a step change in load, the DC bus voltage regulated by the flywheel system will drop momentarily and then recover to the voltage level that existed prior to the application of the load. The drop will be on the order of 10 s



The LVRT criterion is elaborated, and the relationship of power flow and the variation of DC bus voltage of flywheel energy storage grid-connected system in the face of grid voltage dips are analyzed in detail. (2) The control concept of the model predictive current is explained. The MPCC is proposed based on the conventional machine-grid side



Using a 2.9 kWh/725 kW FESS, light rail vehicles can save up to 31% of their energy [133]. By connecting the FESS to the DC power grid, it is possible to save 21.6% of the energy, reduce ???