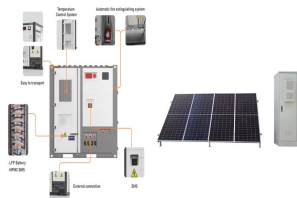
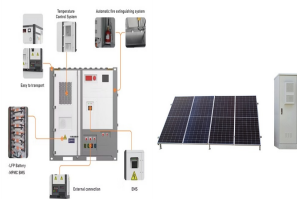


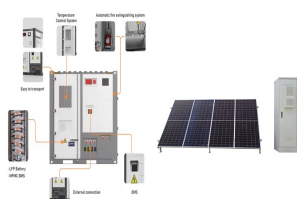
FLYWHEEL ENGINE ENERGY STORAGE



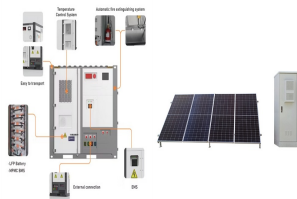
How does a flywheel energy storage system work? Flywheel energy storage uses electric motors to drive the flywheel to rotate at a high speed so that the electrical power is transformed into mechanical power and stored, and when necessary, flywheels drive generators to generate power. The flywheel system operates in the high vacuum environment.



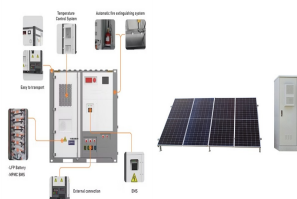
Could flywheels be the future of energy storage? Flywheels, one of the earliest forms of energy storage, could play a significant role in the transformation of the electrical power system into one that is fully sustainable yet low cost.



How long does a flywheel energy storage system last? Flywheel energy storage systems have a long working life if periodically maintained (>25 years). The cycle numbers of flywheel energy storage systems are very high (>100,000). In addition, this storage technology is not affected by weather and climatic conditions. One of the most important issues of flywheel energy storage systems is safety.



What is a flywheel energy storage system (fess)? The flywheel energy storage system (FESS) is one such storage system that is gaining popularity. This is due to the increasing manufacturing capabilities and the growing variety of materials available for use in FESS construction. Better control systems are another important recent breakthrough in the development of FESS [32,36,37,38].

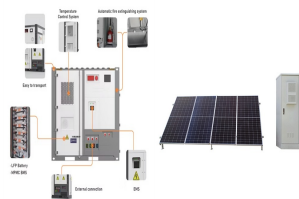


Can small applications be used instead of large flywheel energy storage systems? Small applications connected in parallel can be used instead of large flywheel energy storage systems. There are losses due to air friction and bearing in flywheel energy storage systems. These cause energy losses with self-discharge in the flywheel energy storage system.

FLYWHEEL ENGINE ENERGY STORAGE



Where is flywheel energy storage located? It is generally located underground to eliminate this problem. Flywheel energy storage uses electric motors to drive the flywheel to rotate at a high speed so that the electrical power is transformed into mechanical power and stored, and when necessary, flywheels drive generators to generate power.



In inertial energy storage systems, energy is stored in the rotating mass of a fly wheel. In ancient potteries, a kick at the lower wheel of the rotating table was the energy input to maintain a?



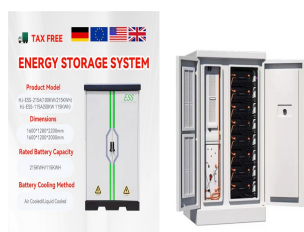
Functions of flywheel. It is used to store energy when available and supply it when required. To reduce speed fluctuations. To reduce power capacity of electric motor or engine.; Applications of the flywheel can be broadly divided into two parts based on source of power available and the type of driven machinery.



The flywheel energy storage operating principle has many parallels with conventional battery-based energy storage. The flywheel goes through three stages during an operational cycle, like all types of energy storage systems: The flywheel speeds up: this is the charging process. Charging is interrupted once the flywheel reaches the maximum



Instead of parallel gasoline engine/electric motor drive systems combined with a battery, the 911 racer paired an internal combustion flat-six cylinder with an electro-mechanical flywheel energy



A flywheel-storage power system uses a flywheel for energy storage, (see Flywheel energy storage) and can be a comparatively small storage facility with a peak power of up to 20 MW typically is used to stabilize to some degree power grids, to help them stay on the grid frequency, and to

FLYWHEEL ENGINE ENERGY STORAGE

serve as a short-term compensation storage.

FLYWHEEL ENGINE ENERGY STORAGE



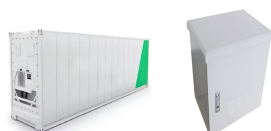
Flywheel energy storage is a promising technology for replacing conventional lead acid batteries as energy storage systems. Most modern high-speed flywheel energy storage systems (FESS) consist of a huge rotating cylinder supported on a stator (the stationary part of a rotary system) by magnetically levitated bearings.



Where, K is the radius of gyration for the flywheel. Now, Energy stored in the flywheel can be given by: $E = \frac{1}{2} I \omega^2$ Where; C is the coefficient of viscosity for the flywheel i.e $(N_1 - N_2)/N$. How Can We Use Flywheels To Determine Running Direction? A flywheel can be little handy determining the running direction of an engine.



Flywheel energy storage stores kinetic energy by spinning a rotor at high speeds, offering rapid energy release, enhancing grid stability, supporting renewables, and reducing energy costs. This basic principle was later applied to 19th-century steam engines and early 20th-century streetcars, which used heavy flywheels to store and release



Beacon Power is building the world's largest flywheel energy storage system in Stephentown, New York. The 20-megawatt system marks a milestone in flywheel energy storage technology, as similar systems have only been applied in testing and small-scale applications. The system utilizes 200 carbon fiber flywheels levitated in a vacuum chamber.



The flywheel schematic shown in Fig. 11.1 can be considered as a system in which the flywheel rotor, defining storage, and the motor generator, defining power, are effectively separate machines that can be designed accordingly and matched to the application. This is not unlike pumped hydro or compressed air storage whereas for electrochemical storage, the a?|

FLYWHEEL ENGINE ENERGY STORAGE



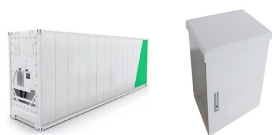
One energy storage technology now arousing great interest is the flywheel energy storage systems (FESS), since this technology can offer many advantages as an energy storage solution over the alternatives. At the time, flywheels were used on steam engine boats and trains and as energy accumulators in factories . In the middle of 19th

Commercial and Industrial ESS
Air Cooling / Liquid Cooling

- Budget-Friendly Solution
- Renewable Energy Integration
- Modular Design for Flexible Expansion



FLYWHEEL ENERGY STORAGE FOR ISS Flywheels For Energy Storage a?c Flywheels can store energy kinetically in a high speed rotor and charge and discharge using an electrical motor/generator. IEA Mounts Near Solar Arrays a?? Benefits a?? Flywheels life exceeds 15 years and 90,000 cycles, making them ideal long duration LEO platforms like



For minimal weight and high energy-storage capacity, a flywheel can be formed of high-strength steel and produced as a tapered disk, which is thick in the center. 3. High Velocity Flywheel Without a flywheel, the engine loses part of the speed that continues the crankshaft speed, so it is needed. Now, I hope that you have learned about the



Flywheel is a rotating mechanical device used to store kinetic energy. It usually has a significant rotating inertia, and thus resists a sudden change in the rotational speed (Bitterly 1998; Bolund et al. 2007).With the increasing problem in environment and energy, flywheel energy storage, as a special type of mechanical energy storage technology, has extensive a?|



A flywheel can be used to smooth energy fluctuations and make the energy flow intermittent operating machine more uniform. Flywheels are used in most combustion piston engines. Energy is stored mechanically in a flywheel as kinetic energy. Kinetic Energy. Kinetic energy in a flywheel can be expressed as. $E_f = \frac{1}{2} I \omega^2$ (1) where

FLYWHEEL ENGINE ENERGY STORAGE



Flywheel energy storage (FES) works by accelerating a rotor (flywheel) to a very high speed and maintaining the energy in the system as rotational energy. The energy is converted back by slowing down the flywheel. Most FES systems use electricity to accelerate and decelerate the flywheel, but devices that directly use mechanical energy are being developed.



This concise treatise on electric flywheel energy storage describes the fundamentals underpinning the technology and system elements. Steel and composite rotors are compared, including geometric effects and not just specific strength. A simple method of costing is described based on separating out power and energy showing potential for low power cost a?]



Amber Kinetics is a leading designer and manufacturer of long duration flywheel energy storage technology with a growing global customer base and deployment portfolio. Key Amber Kinetics Statistics. 15 . Years. Unsurpassed experience designing and deploying the world's first long-duration flywheel energy storage systems.



Energy storage flywheel systems are mechanical devices that typically utilize an electrical machine (motor/generator unit) to convert electrical energy in mechanical energy and vice versa. Energy is stored in a fast-rotating mass known as the flywheel rotor. The rotor is subject to high centripetal forces requiring careful design, analysis, and fabrication to ensure the safe a?]



Starting the engine: The flywheel plays an additional role in starting the engine. The teeth of the flywheel are attached to a starter motor. For minimal weight and high energy storage capacity, a flywheel can be formed from high-strength steel and manufactured as a centrally thick conical disk. 3. High-velocity flywheel.

FLYWHEEL ENGINE ENERGY STORAGE



One energy storage technology now arousing great interest is the flywheel energy storage systems (FESS), since this technology can offer many advantages as an energy storage solution over the alternatives. At a?

APPLICATION SCENARIOS



Flywheel Energy Storage Systems (FESS) work by storing energy in the form of kinetic energy within a rotating mass, known as a flywheel. Here's the working principle explained in simple way, Energy Storage: The system features a flywheel made from a carbon fiber composite, which is both durable and capable of storing a lot of energy.



It may be possible to have an energy storage system based on distributed flywheel modules that can simultaneously perform all of these functions, rather than having each function provided separately with batteries or other limited-capability energy storage technologies. IV. ELECTRIC START Flywheel energy storage is being investigated as a direct



Fig. 1 has been produced to illustrate the flywheel energy storage system, including its sub-components and the related technologies. A FESS consists of several key components: (1) A rotor/flywheel for storing the kinetic energy. (2) A bearing system to support the rotor/flywheel. (3) A power converter system for charge and discharge, including



A flywheel is a heavy disk-like structure used in machinery which acts as a storage device to store energy when energy input exceeds demand and releases energy when energy demand exceeds supply. In steam engines, internal combustion engines, reciprocating compressors, and pumps, energy is produced during one stroke, and the engine is designed a?|

LIQUID COOLING ENERGY STORAGE SYSTEM



Flywheel energy storage consists in storing kinetic energy via the rotation of a heavy object. Find out how it works. Some systems can boost engine power using cylinders weighing a few kilograms spinning at very high speeds of 60,000 RPM. Mainly fitted to Formula One race cars, they

FLYWHEEL ENGINE ENERGY STORAGE

provide drivers with extra power, when accelerating out of

FLYWHEEL ENGINE ENERGY STORAGE



Functions of Flywheel. The various functions of a flywheel include: Energy Storage: The flywheel acts as a mechanical energy storage device, accumulating rotational energy during periods of excess power or when the engine is running efficiently.; Smooth Power Delivery: By storing energy, the flywheel helps in delivering power consistently to the transmission system, a?]



Flywheel Energy Storage System (FESS) Revterra Kinetic Stabilizer Save money, stop outages and interruptions, and overcome grid limitations. Sized to Meet Even the Largest of Projects. Our industrial-scale modules provide 2 MW of power and can store up to 100 kWh of energy each, and can be combined to meet a project of any scale.



The simple concept is the momentary storage of the kinetic energy from the engine in revving up the flywheel as the vehicle decelerates instead of depleting it as heat in the brake pads. This energy would allow modern cars to disengage the engine for long waits (idling at a traffic light, for example) and be stored in flywheels mounted on drive



The core element of a flywheel consists of a rotating mass, typically axisymmetric, which stores rotary kinetic energy E according to (Equation 1) $E = \frac{1}{2} I \omega^2$ [J], where E is the stored kinetic energy, I is the flywheel moment of inertia [kgm²], and ω is the angular speed [rad/s]. In order to facilitate storage and extraction of electrical energy, the rotor a?]