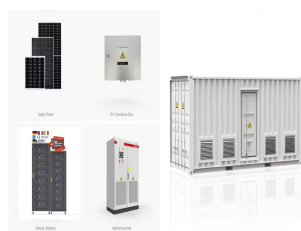


FRENCH SOUTHERN TERRITORIES T



Port-aux-Français has an ocean-moderated mild tundra climate (Köppen climate classification ET). [1] Temperatures (without windchill) tend to remain fairly stable throughout the year, rarely reaching over 18 °C (64 °F) or falling below -8 °C ???



They are among the most isolated places on Earth, with the closest territory being the Heard Island and McDonald Islands territory of Australia located at roughly 450 km (240 nmi), and the nearest inhabited territory being Madagascar at more than 1000 km.



French Southern and Antarctic Territories, French overseas territory consisting of the islands of Saint-Paul and Nouvelle Amsterdam and the island groups of Kerguelen and Crozet in the southern Indian Ocean, as well as the French Southern and Antarctic Territory (TAAF).



French Southern and Antarctic Territories (TAAF) is a French overseas territory consisting of the islands of Saint-Paul and Nouvelle Amsterdam and the island groups of Kerguelen and Crozet in the southern Indian Ocean, as well as the French Southern and Antarctic Territory (TAAF).



These are very special French territories, as much for their biodiversity as for their administrative system, whose specific features reflect these "marginal lands at the heart of territorial issues".



Overview History Grande Terre Islands Economy Geology Climate Flora and fauna

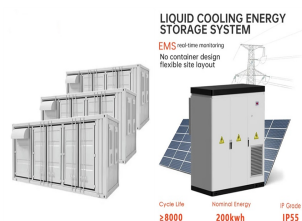
FRENCH SOUTHERN TERRITORIES T



In 2006, the French Southern Territories Nature Reserve was created around the Crozet archipelago and the Kerguelen, Saint-Paul and Amsterdam islands. This reserve, which by 2022 will cover an area of 1.6 ???



The Southern Lands consist of two archipelagos, Iles Crozet and Iles Kerguelen, and two volcanic islands, Ile Amsterdam and Ile Saint-Paul. They have no permanent inhabitants and are visited only by researchers studying ???



French Southern and Antarctic Lands (French: Terres australes et antarctiques fran?aises, or TAAF;) are a group of islands of the Indian Ocean, about equidistant between Africa, Antarctica, and mainland Australia along with a narrow strip of Antarctica, known as Ad?lie Land.



The Kerguelen Islands (/ k ??r ?? ?? e?? l ?? n / or / ?? k ?????r ?? ??l ?? n /; [2] in French commonly ?les Kerguelen but officially Archipel Kerguelen, [3] pronounced [k??????el??n]), also known as the Desolation Islands (?les de la D?solation in ???



Photos of French Southern and Antarctic Lands. There are no photos for French Southern and Antarctic Lands. Country Flag. View Details. Country Map. View Details. Special Country Products. Country Factsheet. Locator Map. View Details. Contents Introduction. Geography. People and Society. Environment. Government



Background. In February 2007, the Iles Eparses became an integral part of the French Southern and Antarctic Lands (TAAF). The Southern Lands are now divided into five administrative districts, two of which are ???

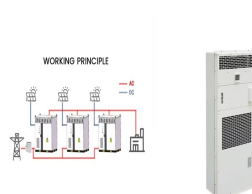
FRENCH SOUTHERN TERRITORIES T



This aerial view shows the research station at Martin-de-Vivi?s on ?le Amsterdam, part of the five administrative districts of the French Southern and Antarctic Territories, on December 31, 2022.



The French Southern and Antarctic Territories (TAAF) are a French overseas territory (OCT) located in the Indian Ocean. The OCT has no permanent population but is home to scientific and technical staff. The TAAF are of ???



Photos of French Southern and Antarctic Lands. There are no photos for French Southern and Antarctic Lands. Country Flag. View Details. Country Map. View Details. Special Country Products. Country Factsheet. ???



In February 2007, the Iles Eparses became an integral part of the French Southern and Antarctic Lands (TAAF). The Southern Lands are now divided into five administrative districts, two of which are archipelagos, Iles Crozet and Iles Kerguelen; the third is a district composed of two volcanic islands, Ile Saint-Paul and Ile Amsterdam; the fourth, Iles Eparses, consists of five scattered



Excluding the district of Ad?lie Land, where French sovereignty is effective de jure by French law, but where the French exclusive claim on this part of Antarctica is frozen by the Antarctic Treaty (signed in 1959), overseas France covers a ???

FRENCH SOUTHERN TERRITORIES T



The French Southern and Antarctic Lands [6] (French: Terres australes et antarctiques fran aises, TAAF) is an overseas territory (French: Territoire d'outre-mer or TOM) of France. It consists of: Ad lie Land (Terre Ad lie), the French claim on the continent of Antarctica.



French Southern and Antarctic Territories, French overseas territory consisting of the islands of Saint-Paul and Nouvelle Amsterdam and the island groups of Kerguelen and Crozet in the southern Indian Ocean, as well as the Ad lie Coast on the Antarctic continent.



These are very special French territories, as much for their biodiversity as for their administrative system, whose specific features reflect these "marginal lands at the heart of territorial issues".