

# GENERAL LITHIUM BATTERY ENERGY STORAGE POWER STATION CAPACITY



Are lithium-ion batteries suitable for grid-scale energy storage? This paper provides a comprehensive review of lithium-ion batteries for grid-scale energy storage, exploring their capabilities and attributes. It also briefly covers alternative grid-scale battery technologies, including flow batteries, zinc-based batteries, sodium-ion batteries, and solid-state batteries.



What are the key technical parameters of lithium batteries? Learn about the key technical parameters of lithium batteries, including capacity, voltage, discharge rate, and safety, to optimize performance and enhance the reliability of energy storage systems. Lithium batteries play a crucial role in energy storage systems, providing stable and reliable energy for the entire system.



What is the battery storage capacity in the US? US battery storage capacity . By 2022, the total nameplate power capacity of the implemented BESS was around 8,842 MW and the total energy capacity was 11,105 MWh .



What is the specific energy capacity of a lithium ion battery? The specific energy capacity of these batteries is 150-220 Wh/kg. The charge C-rate for these batteries is around 0.5C and if charged above 1C, the battery life degrades. However, the discharge rate could be around 2C. The cycle life for these batteries is 1000-2000 cycles .



Are lithium-ion batteries a viable energy storage option? The industry currently faces numerous challenges in utilizing lithium-ion batteries for large-scale energy storage applications in the grid. The cost of lithium-ion batteries is still relatively higher compared to other energy storage options.

# GENERAL LITHIUM BATTERY ENERGY STORAGE POWER STATION CAPACITY



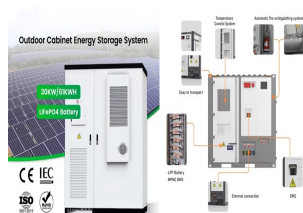
Why are lithium batteries important for energy storage systems? Lithium batteries play a crucial role in energy storage systems, providing stable and reliable energy for the entire system. Understanding the key technical parameters of lithium batteries not only helps us grasp their performance characteristics but also enhances the overall efficiency of energy storage systems.



Battery energy storage is becoming increasingly important to the functioning of a stable electricity grid. As of 2023, the UK had installed 4.7GW / 5.8GWh of battery energy storage systems,[1] with significant additional ???



Lithium-ion battery storage is a type of energy storage power station that uses a group of batteries to store electrical energy. Battery storage is the fastest responding dispatchable source of ???



Based on cost and energy density considerations, lithium iron phosphate batteries, a subset of lithium-ion batteries, are still the preferred choice for grid-scale storage. More energy-dense chemistries for lithium-ion batteries, ???



China Central Television (CCTV) recently aired the documentary Cornerstones of a Great Power, which vividly describes CATL's efforts in the technological breakthrough of long-life batteries. The Jinjiang 100 MWh ???

# GENERAL LITHIUM BATTERY ENERGY STORAGE POWER STATION CAPACITY



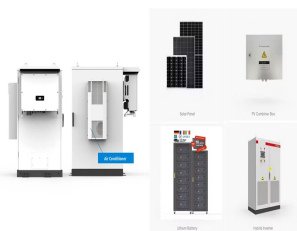
U.S. battery storage capacity has been growing since 2021 and could increase by 89% by the end of 2024 if developers bring all of the energy storage systems they have planned on line by their intended commercial ???



Battery capacity is a critical indicator of lithium battery performance, representing the amount of energy the battery can deliver under specific conditions (such as discharge rate, temperature, and cutoff voltage), ???



Among several battery technologies, lithium-ion batteries (LIBs) exhibit high energy efficiency, long cycle life, and relatively high energy density. In this perspective, the properties ???



Additionally, four flywheel energy storage systems are operational, with a combined power capacity of 47 MW and 17 MWh of energy capacity, serving various purposes including ???



Zhongmei main product Energy Storage, Portable power station, UPS Power Supply, Solar Battery Storage, Lifepo4 Battery Cells, Lithium Ion Marine Batteries, ect. Energy Storage|Portable power station|UPS Power Supply|Solar ???

# GENERAL LITHIUM BATTERY ENERGY STORAGE POWER STATION CAPACITY



Principal Analyst ??? Energy Storage, Faraday Institution. Battery energy storage is becoming increasingly important to the functioning of a stable electricity grid. As of 2023, the UK had installed 4.7GW / 5.8GWh of battery ???



The relative charging capacity is represented by the ratio of the AC side charging capacity of the power station energy storage unit to the rated capacity of the power station ???



A battery storage power station is a type of energy storage power station that uses a group of batteries to store electrical energy. Battery storage is the fastest responding dispatchable source of power on grids, and it is used to stabilize ???



Situated in Moss Landing, California, the Moss Landing Energy Storage Facility stands as a cutting-edge lithium-ion battery energy storage system, boasting a capacity of 100 MW and 400 MWh. Developed by Vistra ???



Imagine harnessing the full potential of renewable energy, no matter the weather or time of day. Battery Energy Storage Systems (BESS) make that possible by storing excess energy from solar and wind for later use. As ???

# GENERAL LITHIUM BATTERY ENERGY STORAGE POWER STATION CAPACITY



In addition, the aggressive expansion of battery production capacity by the producers also contributed to the cost reduction. The fully commissioned battery-cell manufacturing capacity of 3.1 terawatt-hours ???



That is to say, under the same weight, the energy density of the ternary lithium battery is 1.7 times that of the lithium iron phosphate battery. The lower energy density makes its power storage capacity not as high as that of ???