

GIBRALTAR ATES ENERGY GROUP



Gibraltar's semi-wild population of barbary macaques are found on the Rock, and while they do spend a lot of time in and around the top they are mostly found at their den, not too far from the middle cable car station. How they got here is subject to many myths, with the most prevailing being that they were introduced in order to entertain



Considered by vacationers to be the top attraction of Gibraltar, the Gibraltar monkeys attract attention where ever they are seen. During early mornings and late evenings, whilst approaching St Michael's Cave after entering the Upper Rock Nature Reserve at Jews Gate, you will be sure to come into contact with a first group of monkeys.



Firma ATES ENERGY GROUP zosta??a za??o?o 1/4 ona 2017-05-04 i obecnie mie??ci si?? przy 769, PL-36-007, MALAWA. G???wna dzia??alno???? firmy to urz??dzenia grzewcze. Inne dzia??ania prowadzone przez firm?? obejmuj?? pozosta??a dzia??alno????, prace elektroinstalacyjne, sieci in? 1/4 ynieryjne i techniczne, us??ugi budowlane, us??ugi finansowe.



Considered by vacationers to be the top attraction of Gibraltar, the Gibraltar monkeys attract attention where ever they are seen. During early mornings and late evenings, whilst approaching St Michael's Cave after entering the Upper ???



The Energy Vision Group has won the Energy Globe Award Gibraltar 2024. The awards recognise efforts to drive sustainable practice, at a local and international level. EVG will now compete at the global level for the top award, and will be included in an international database of environmental solutions.

GIBRALTAR ATES ENERGY GROUP



ATES ENERGY GROUP wywodzi si?? z sektora rynku OZE buduj??c du? 1/4 e grona zadowolonych klient?w, tworz??c inwestycje dla sp???ek, firm jak i klient?w indywidualnych. Wykonujemy darmowe audyty, kt?re oceniaj?? mo? 1/4 liwo??ci monta? 1/4 owe oraz op??acalno???? inwestycji.



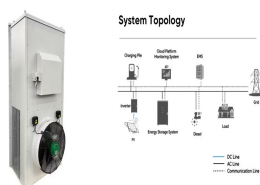
Considered by vacationers to be the top attraction of Gibraltar, the Gibraltar monkeys attract attention where ever they are seen. During early mornings and late evenings, whilst approaching St Michael's Cave after entering the Upper Rock Nature Reserve at Jews Gate, you will be sure to come into contact with a first group of monkeys.



Ates Energy Group Sp. z o.o. jest sp???k?? w Polska z g???wn?? siedzib?? w Malawa. Dzia??a w sektorze Wykonawcy instalacji sanitarnych, grzewczych i klimatyzacyjnych. Sp???ka zosta??a za??o? 1/4 ona/wpisana do rejestru 04 maja 2017. Siedziba g???wna Malawa 769



ATES ENERGY GROUP sp. z o.o. Malawa 769. 36-007 Krasne. NIP: 5170381630. Je? 1/4 eli masz pytania dotycz??ce publikacji Twoich danych w zwi??zku z Wizyt?wk?? Pracodawcy, chcesz je usun????, poprawi?? lub skorzysta?? z innych Twoich praw, skontaktuj si?? z nami pod adresem: lub naszym Inspektorem Ochrony Danych pod adresem: [email



The Energy Efficiency Directive (EED) came into force in 2012 and is the most comprehensive directive on energy efficiency. The EED establishes a common framework of measures for improving energy efficiency throughout the European Union (EU) Member States and to ensure that the EU achieves its energy saving target of 20% by 2020.

GIBRALTAR ATES ENERGY GROUP



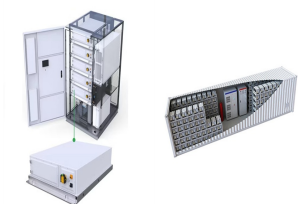
Opis: Firma zmieniła nazwę na ATES ENERGY GROUP SP. z o.o. z OGRANICZONĄ ODPOWIEDZIALNOŚCIĄ. Stara nazwa firmy to OBII-BUS 1 SP. z o.o. z OGRANICZONĄ ODPOWIEDZIALNOŚCIĄ. Sygnatura akt: RZ.XII NS-REJ.KRS/7650/23/719 Oznaczenie sedy: SED REJONOWY W RZESZOWIE, XII WYDZIAŁ GOSPODARCZY KRAJOWEGO



One of Gibraltar's most iconic attractions, the Barbary Macaque, normally only seen in North Africa are a main feature of the Upper Rock Nature Reserve. Their presence in Gibraltar is said to date from the early days of the British Garrison. Many legends surround the Macaques such as, should they ever disappear, the British will leave Gibraltar.



Driving to Gibraltar From Malaga 1 hour and 45 minutes, 80 miles; Driving to Gibraltar From Cadiz 1 hour and 30 minutes, 70 miles away; How to Get Around Gibraltar. Unlike the rest of the UK, Gibraltar drives on the right side of the road. This means that if you're traveling by car, the transition from Spain to Gibraltar is smooth.



Ates Energy Group to firma, która specjalizuje się w instalacji pomp ciepła. Nasza ekipa składa się z doświadczonych specjalistów, którzy dbają o każdy detal podczas montażu pomp ciepła, gwarantując najwyższą jakość usług. Wykorzystujemy najnowocześniejsze technologie i sprawdzone rozwiązania, aby zapewnić naszym klientom



Ates Energy Group Sp. z o.o. is an enterprise based in Poland. Its main office is in Malawa. It operates in the Plumbing, Heating, and Air-Conditioning Contractors sector. Ates Energy Group Sp. z o.o. was incorporated on May 04, 2017. Headquarters Malawa 769

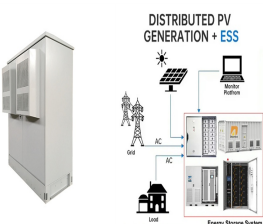
GIBRALTAR ATES ENERGY GROUP



The demand for renewable forms of energy, such as solar, has never been greater. Our technology enables customers and utilities to harness energy efficiently??? wherever they choose to build. We are expanding the possibilities ???



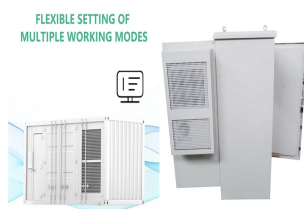
ATES ENERGY S.r.l. nasce nel 2011 con l'obiettivo di fornire alle aziende un servizio di assistenza nel settore della manutenzione di impianti fotovoltaici e industriali. Un supporto tecnico-gestionale basato su soluzioni personalizzate che si integri con i servizi gi? presenti presso il cliente. Per questo l'azienda ? interlocutore unico per tutte le fasi della gestione ???



Considered by vacationers to be the top attraction of Gibraltar, the Gibraltar monkeys attract attention where ever they are seen. During early mornings and late evenings, whilst approaching St Michael's Cave after entering the Upper Rock Nature Reserve at Jews Gate, you will be sure to come into contact with a first group of monkeys.



ATES systems can be integrated with minimal impact on existing energy infrastructure. Its reduced dependence on the conventional grid ensures that the supply of energy for heating and cooling during peak demand ???



ATES Energy specializes in "On Site Power Generation" with its qualified technical personnel and unique engineering knowledge. Our company designs permanent and reliable systems in accordance with international standards by cooperating with the world's leading institutions and organizations. Our service group is gathered in three main

GIBRALTAR ATES ENERGY GROUP



Research led by Imperial College London found the technology, known as Aquifer Thermal Energy Storage (ATES), can provide heating for 25 per cent cheaper than a gas boiler and 40 per cent less