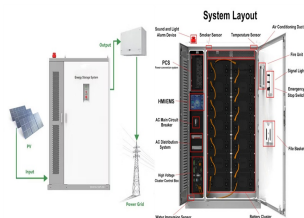


GLOBAL LARGE ENERGY STORAGE POWER STATION



Simplified electrical grid with energy storage Simplified grid energy flow with and without idealized energy storage for the course of one day. Grid energy storage (also called large-scale energy storage) is a collection of methods used for energy storage on a large scale within an electrical power grid. Electrical energy is stored during times when electricity is plentiful and inexpensive



China has connected to the grid its first large-scale standalone flywheel energy storage project in Shanxi Province's city of Changzhi. The Dinglun Flywheel Energy Storage ???



In October 2020, China set the goal of peaking CO₂ emissions by 2030 and neutralizing CO₂ emissions by 2060. The application of renewable or clean energy has become an important way of energy conservation and emission reduction in the context of global low-carbon economy, especially under the goal of "carbon neutrality" and "carbon peak" [1]. The ???



Globally, communities are converting to renewable energy because of the negative effects of fossil fuels. In 2020, renewable energy sources provided about 29% of the world's primary energy. However, the intermittent nature of renewable power, calls for substantial energy storage. Pumped storage hydropower is the most dependable and widely used option ???



3. Modeling of key equipment of large-scale clustered lithium-ion battery energy storage power stations. Large-scale clustered energy storage is an energy storage cluster composed of distributed energy storage units, with a power range of several KW to several MW [13]. Different types of large-scale energy storage clusters have large differences in parameters ???

GLOBAL LARGE ENERGY STORAGE POWER STATION



The Ffestiniog Power Station, as shown in Figure 1, is an exemplar for closed-loop, off-river systems. This site has good head (300 m), low separation keeping tunnels short (1.3 km), small reservoir areas (10 and 30 Ha) and limited upper reservoir catchment (160 Ha). While global databases of large reservoirs do exist, 20 examination of the



MW/200 MWh installation is the first phase of the Longquan Energy Storage project, funded and constructed by state-owned utility Power China. The project has a total planned capacity of



The optimal configuration of energy storage capacity is an important issue for large scale solar systems. a strategy for optimal allocation of energy storage is proposed in this paper. First various scenarios and their value of energy storage in PV applications are discussed. Then a double-layer decision architecture is proposed in this article. Net present value, investment payback period

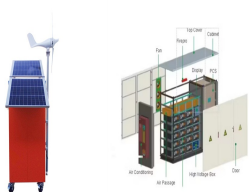


The energy storage project includes 42 energy storage warehouses and 21 machines integrating energy boosters and converters, using large-capacity sodium-ion batteries of 185 ampere-hours, with a 110-kilovolt booster station as a supporting facility, according to information HiNa Battery Technology, which provides it with sodium-ion batteries



Under the trend of large capacity of global pumped storage power stations, small and medium-sized pumped storage power stations in various countries have not received much attention. so it is a mature energy storage method with high economy and large capacity [27]. The energy storage optimization of the power station mainly involves the

GLOBAL LARGE ENERGY STORAGE POWER STATION



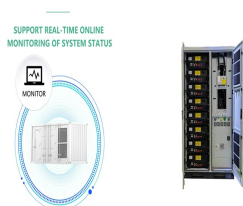
State energy regulators today gave Con Edison and partner 174 Power Global approval to place a large battery system at the site of a former fossil fuel plant near the East River in Astoria, Queens. 174 Power Global is a leading solar and energy storage company that is wholly owned by the Hanwha Group, with offices in NYC and in California.



Spain's Andasol Solar Power Station Melted salt thermal storage is a feature of Large-scale energy storage requirements can be met by LDES solutions thanks to projects like the Bath County Pumped Storage Station, and the versatility of technologies like CAES and flow batteries to suit a range of use cases emphasizes the value of flexibility



U.S. Large-Scale BES Power Capacity and Energy Capacity by Chemistry, 2003-2017 .. 19 Figure 16. generation and utilization, reducing cycling, and improving plant efficiency. Co-located energy storage has the potential to provide direct benefits arising DOE Global Energy Storage Database (Sandia 2020), as of February 2020.



Drost proposed a coal fired peaking power plant using molten salt storage in 1990 112. Conventional power plant operation with a higher flexibility using TES was examined in research projects (e.g., BMWi funded projects FleGs 0327882 and FLEXI-TES 03ET7055). (PtGtP) is a major concept for large-scale energy storage.



When power failure occurs due to system breakdown, battery energy storage station can transmit power to the key load of the local grid, to prevent losses due to power outage. Battery energy storage station could improve the utilization rate of UHV lines and ensure the safe and stable operation of UHV grids because it could be deployed flexibly.

GLOBAL LARGE ENERGY STORAGE POWER STATION

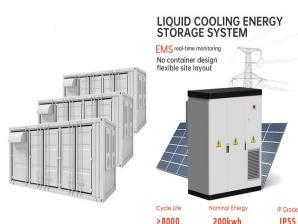


TES thermal energy storage UPS uninterruptible power source

Cumulative (2011???2019) global CAES energy storage deployment .. 31

Figure . Cumulative (2011???2019) global CAES power deployment..31

Figure 36. U.S. CAES Active and planned ???



With the rapid development of renewable energy such as wind energy and solar energy, more and more intermittent and fluctuating energy sources bring a series of unprecedented challenges to the safe and stable operation of power grid. Energy storage technology provides an effective way to solve the problems of frequency modulation and peak ???



In the concentrated area of the UHV receiver stations, the building of multi-energy-coupled new-generation pumped-storage power stations can provide large-capacity reactive power support to stabilize the voltage of the power grid. 3.3 Load center areas Because of the variable-speed unit, optical storage, and chemical energy storage battery, the



Battery energy storage (BESS) offer highly efficient and cost-effective energy storage solutions. BESS can be used to balance the electric grid, provide backup power and improve grid stability. From renewable energy producers, conventional thermal power plant operators and grid operators to industrial electricity consumers, and offshore



In the past few decades, electricity production depended on fossil fuels due to their reliability and efficiency [1]. Fossil fuels have many effects on the environment and directly affect the economy as their prices increase continuously due to their consumption which is assumed to double in 2050 and three times by 2100 [6] g. 1 shows the current global ???

GLOBAL LARGE ENERGY STORAGE POWER STATION



Energy Storage Technologies Empower Energy Transition report at the 2023 China International Energy Storage Conference. The report builds on the energy storage-related data released by the CEC for 2022. Based on a brief analysis of the global and Chinese energy storage markets in terms of size and future development, the publication delves into the



A battery energy storage system (BESS) is an electrochemical device that charges (or collects energy) from the grid or a power plant and then discharges that energy at a later time to provide electricity or other grid services when needed. Several battery When starting up, large generators need an external source



The electricity Footnote 1 and transport sectors are the key users of battery energy storage systems. In both sectors, demand for battery energy storage systems surges in all three scenarios of the IEA WEO 2022. In the electricity sector, batteries play an increasingly important role as behind-the-meter and utility-scale energy storage systems that are easy to ???



Electrical Energy Storage (EES) refers to systems that store electricity in a form that can be converted back into electrical energy when needed. 1 Batteries are one of the most common forms of electrical energy storage. The first battery???called Volta's cell???was developed in 1800. 2 The first U.S. large-scale energy storage facility was the Rocky River Pumped Storage plant in ???



The statistical data covers the period from 2013 to 2023. In 2011, the National Demonstration Energy Storage Power Station for Wind and Solar was put into operation, marking the beginning of exploratory verification of EES capabilities. But in the first few years, there was a lack of publicly available official industry statistics.

GLOBAL LARGE ENERGY STORAGE POWER STATION



This was a concrete embodiment of the 5G base station playing its peak shaving and valley filling role, and actively participating in the demand response, which helped to reduce the peak load adjustment pressure of the power grid. Fig. 5 Daily electricity rate of base station system 2000 Sleep mechanism 0, energy storage ??????low charges and