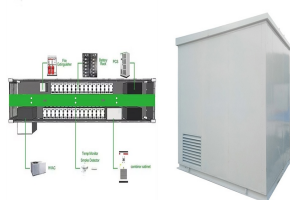


GREEN AND LOW-CARBON FLYWHEEL ENERGY STORAGE



High-Speed Flywheel Designs: Innovations in materials and design are enabling the development of flywheels that can spin at higher speeds, increasing energy storage capacity and power output. Magnetic Bearings: Magnetic bearings eliminate friction and wear, improving efficiency and extending the lifespan of FES systems. Composite Flywheel Materials: Carbon fiber ???



Growing Up Green: The Promise of Renewable Energy in Vertical Agriculture; The Future of Work: How Renewable Energy is Creating New Jobs Flywheel energy storage (FES) is a technology that stores kinetic energy through rotational motion. The high energy density and low maintenance requirements make it an attractive energy storage option



Flywheel has low storage capacity and can be employed only for grids with a lower range. So, more study on the hybridization of FESS as a farm with other appropriate systems must be ???



Dai Xingjian et al. [100] designed a variable cross-section alloy steel energy storage flywheel with rated speed of 2700 r/min and energy storage of 60 MJ to meet the technical requirements for energy and power of the energy storage unit in the hybrid power system of oil rig, and proposed a new scheme of keyless connection with the motor



double the energy density level when compared to typical designs. The shaftless flywheel is further optimized using finite element analysis with the magnetic bearing and motor/generators" design considerations. Keywords: Battery, Energy storage flywheel, Shaft-less flywheel, Renewable energy, Stress analysis, Design optimization Introduction

GREEN AND LOW-CARBON FLYWHEEL ENERGY STORAGE



In July 2021 China announced plans to install over 30 GW of energy storage by 2025 (excluding pumped-storage hydropower), a more than three-fold increase on its installed capacity as of 2022. The United States' Inflation Reduction Act, passed in August 2022, includes an investment tax credit for stand-alone storage, which is expected to



FESS is gaining popularity lately due to its distinctive benefits, which include a long life cycle, high power density, minimal environmental impact and instantaneous high power density [6]. Flywheel Kinetic Energy Recovery System (KERS) is a form of a mechanical hybrid system in which kinetic energy is stored in a spinning flywheel, this technology is being trialled ???



Flywheel energy storage is a promising replacement for conventional lead acid batteries. FESS utilise kinetic energy stored in a rotational mass with low frictional losses. The kinetic energy of the system is described by the equation $E_k = \frac{1}{2} I \omega^2$. AZoCleantech interviews Carbon Limit's Founder and CEO about the company's mission to reduce one



Flywheel technology has the potential to be a key part of our Energy Storage needs, writes Prof. Keith Robert Pullen: Electricity power systems are going through a major transition away from centralised fossil and nuclear based generation towards renewables, driven mainly by substantial cost reductions in solar PV and wind.



Energy storage flywheel systems are mechanical devices that typically utilize an electrical machine (motor/generator unit) to convert electrical energy in mechanical energy and vice versa. Energy is stored in a fast-rotating mass known as the flywheel rotor. The rotor is subject to high centripetal forces requiring careful design, analysis, and fabrication to ensure the safe ???

GREEN AND LOW-CARBON FLYWHEEL ENERGY STORAGE



The heat from solar energy can be stored by sensible energy storage materials (i.e., thermal oil) [87] and thermochemical energy storage materials (i.e., $\text{CO}_3\text{O}_4/\text{CoO}$) [88] for heating the inlet air of turbines during the discharging cycle of LAES, while the heat from solar energy was directly utilized for heating air in the work of [89].



The flywheel energy storage system (FESS) offers a fast dynamic response, high power and energy densities, high efficiency, good reliability, long lifetime and low maintenance requirements, and is



The study provides a study on energy storage technologies for photovoltaic and wind systems in response to the growing demand for low-carbon transportation. Energy storage systems (ESSs) have become an emerging area of renewed interest as a critical factor in renewable energy systems. The technology choice depends essentially on system ???

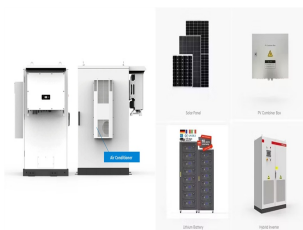


A review of energy storage types, applications and recent developments. S. Koohi-Fayegh, M.A. Rosen, in Journal of Energy Storage, 2020 2.4 Flywheel energy storage. Flywheel energy storage, also known as kinetic energy storage, is a form of mechanical energy storage that is a suitable to achieve the smooth operation of machines and to provide high power and energy ???



The core element of a flywheel consists of a rotating mass, typically axisymmetric, which stores rotary kinetic energy E according to (Equation 1) $E = \frac{1}{2} I \omega^2$ [J], where E is the stored kinetic energy, I is the flywheel moment of inertia [kgm^2], and ω is the angular speed [rad/s]. In order to facilitate storage and extraction of electrical energy, the rotor ???

GREEN AND LOW-CARBON FLYWHEEL ENERGY STORAGE



The operation of the electricity network has grown more complex due to the increased adoption of renewable energy resources, such as wind and solar power. Using energy storage technology can improve the stability and quality of the power grid. One such technology is flywheel energy storage systems (FESSs). Compared with other energy storage systems, ???



This concise treatise on electric flywheel energy storage describes the fundamentals underpinning the technology and system elements. Steel and composite rotors are compared, including geometric effects and not just specific strength. A simple method of costing is described based on separating out power and energy showing potential for low power cost ???



FLYWHEEL ENERGY STORAGE FOR ISS Flywheels For Energy Storage ??? Flywheels can store energy kinetically in a high speed rotor and charge and discharge using an electrical motor/generator. IEA Mounts Near Solar Arrays ??? Benefits ??? Flywheels life exceeds 15 years and 90,000 cycles, making them ideal long duration LEO platforms like



The main components of a typical flywheel. A typical system consists of a flywheel supported by rolling-element bearing connected to a motor???generator. The flywheel and sometimes motor???generator may be enclosed in a vacuum chamber to reduce friction and energy loss.. First-generation flywheel energy-storage systems use a large steel flywheel rotating on mechanical ???



Discover the innovative technology of flywheel energy storage and its impact on the energy sector. and a containment system. The rotor, typically made from advanced materials like carbon fiber, is enclosed in a vacuum chamber to minimize air friction. There are two types of flywheel storage systems. Low-speed flywheels typically operate

GREEN AND LOW-CARBON FLYWHEEL ENERGY STORAGE



Storage has always been an obstacle on the road to a fully electric future ??? batteries tend to be costly, cumbersome and dreadful for the environment. Not exactly ideal in pursuit of green energy solutions. Flywheels, however, are low-carbon, have a lifespan of 30 years, are safe, compact and low-maintenance.



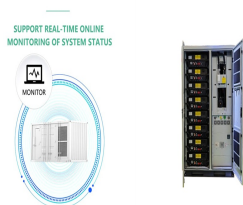
Kinetic Energy-Based Flywheel Energy Storage (FES): A flywheel is a rotating mechanical device that stores rotating energy. When a flywheel needs energy, it has a rotating mass in its core that is powered by an engine. The spinning force propels a tool that generates energy, like a slow-moving turbine.



Become a member. Membership of Energy UK is open to organisations within the energy sector, as well as those who wish to provide a service to the sector. As the leading trade association in the energy policy arena, we provide crucial insight to topical issues, act as a key focal point for providing industry views to government and offer a platform for sharing best ???



The fall and rise of Beacon Power and its competitors in cutting-edge flywheel energy storage. Advancing the Flywheel for Energy Storage and Grid Regulation by Matthew L. Wald. The New York Times (Green Blog), January 25, 2010. Another brief look at Beacon Power's flywheel electricity storage system in Stephentown, New York.

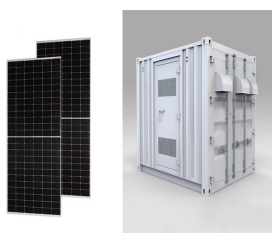


Some of the key advantages of flywheel energy storage are low maintenance, long life (some flywheels are capable of well over 100,000 full depth of discharge cycles and the newest configurations are capable of even more than that, greater than 175,000 full depth of discharge cycles), and negligible environmental impact.

GREEN AND LOW-CARBON FLYWHEEL ENERGY STORAGE



energy storage, could play a significant role in the transformation of the electrical power system into one that is fully sustainable yet low cost. This article describes the major components that



The flywheel schematic shown in Fig. 11.1 can be considered as a system in which the flywheel rotor, defining storage, and the motor generator, defining power, are effectively separate machines that can be designed accordingly and matched to the application. This is not unlike pumped hydro or compressed air storage whereas for electrochemical storage, the



Flywheel and supercapacitor storage have several benefits for the transition to a low-carbon and circular economy. They can help integrate more renewable energy sources into the grid, by providing



More advanced flywheel designs are made of carbon fiber materials, stored in vacuums to reduce drag, and employ magnetic levitation instead of conventional bearings, enabling them to revolve at speeds up to 60,000 RPM. Some of the key advantages of flywheel energy storage are low maintenance, long life (some flywheels are capable of well



Pumped hydro energy storage (PHES) [16], thermal energy storage systems (TESS) [17], hydrogen energy storage system [18], battery energy storage system (BESS) [10, 19], super capacitors (SCs) [20], and flywheel energy storage system (FESS) [21] are considered the main parameters of the storage systems. PHES is limited by the environment, as it

GREEN AND LOW-CARBON FLYWHEEL ENERGY STORAGE



In response to the increased demand for low-carbon transportation, this study examines energy storage options for renewable energy sources such as solar and wind. The primary electrolyte component for high-capacity green production electrical energy storage devices is anticipated to be the organic compounds from the Moringa plant