

GRID-CONNECTED PHASE-LOCKED PHOTOVOLTAIC INVERTER



What is a phase-locked loop control strategy for a grid-connected photovoltaic inverter? Based on that, a phase-locked loop control strategy for the grid-connected photovoltaic inverter is designed on the customized IP core technology of FPGA. The strategy realizes real-time tracking and adjustment of the phase difference between the photovoltaic inverter system and the grid.



How to synchronize an inverter with a grid? To synchronize the inverter with a grid, the phase-locked loop plays a major role in the inverter control. Generally, a basic synchronous reference frame based phase-locked loop is used. The basic SRF phase-locked loop tracks the input signal phase and frequency using the closed-loop feedback control loop.



How a solar photovoltaic system is connected to a grid? The solar photovoltaic system is connected to the grid through a DC/DC converter and an IGBT-based inverter. To synchronize the inverter with a grid, the phase-locked loop plays a major role in the inverter control. Generally, a basic synchronous reference frame based phase-locked loop is used.



Can a solar PV Grid connected system (closed loop) be synchronized? This paper proposes a simulation model of the Solar PV grid connected system (closed loop) using sinusoidal pulse width modulation and Phase lock loop for grid synchronization. The proposed scheme is verified in MATLAB. References is not available for this document.



Are grid-connected inverters under weak grids unstable? In summary, this article takes grid-connected inverters under weak grids as the research object, establishes an inverter output impedance model based on full feedforward control of capacitor voltage and takes phase-locked loop into account, and analyzes locks in weak grids. The phase loop causes the system to be unstable.

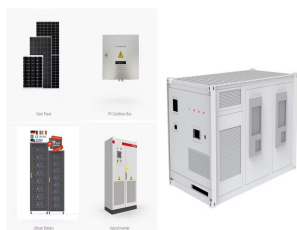
GRID-CONNECTED PHASE-LOCKED PHOTOVOLTAIC INVERTER



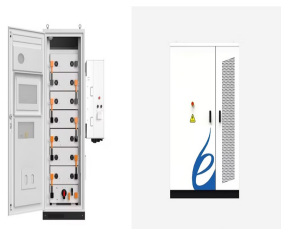
What is the future of PV Grid-Connected inverters? The future of intelligent, robust, and adaptive control methods for PV grid-connected inverters is marked by increased autonomy, enhanced grid support, advanced fault tolerance, energy storage integration, and a focus on sustainability and user empowerment.



link. The second stage features a current-controlled voltage source inverter (VSI) for grid interface. The PV source, in this paper, is a string configuration which consists of ten KD135SX_UPU PV modules connected in series. The PV array specifications, in addition to the system design, are listed in Appendix 1 TABLE I;



single-phase grid-connected photovoltaic multi-inverter systems ISSN 1752-1416 Received on 15th October 2019 Revised 14th November 2020 Accepted on 17th November 2020 E-First on 16th February 2021 doi: 10.1049/iet-rpg.2019.1183 Fadila Barkat¹, Ali Cheknane¹, Josep M. Guerrero², Abderezak Lashab², Marcel Istrate³, Ioan Viorel Banu³



In order to reduce the sampling delay and improve bandwidth, stability margin, and the robustness of the active damping in LCL-filtered grid-connected inverters, real-time sampling provides a convenient method. ???



This paper focuses on the control of a three-phase grid connected PV inverter system that comprises a regulated boost DC-DC converter and a Heterojunction with Intrinsic Thin Layer (HIT) PV array.

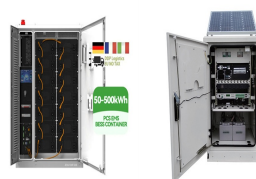
GRID-CONNECTED PHASE-LOCKED PHOTOVOLTAIC INVERTER



PLL Based Photovoltaic System of LCL Three-Phase Grid Connected Inverter with and Without SVPWM Technique a phase locked loop (PLL) based algorithm and a current control feedback technique is employed in the circuit with the help of Direct-Quadrature (dq) theory and PWM techniques like Space vector pulse width modulation (SVPWM) and



Proposed Enhanced PLL enables faster synchronization during inverter start-up. It is used in high power master-slave based centralized inverters which are being used in large PV power plant. ???



Phase-locked loops, inverters, AC-DC dynamics, VSC control. Abstract . The increasing number of power electronic inverters connected to the utility grid means their synchronization to the ???



the use of a phase locked loop to measure the microgrid frequency at the inverter terminals, and to facilitate regulation of the in-verter phase relative to the microgrid. This control strategy allows microgrids to seamlessly transition between grid-connected and autonomous operation, and vice versa. The controller has been



In the grid-connected inverter, both the phase-locked loop (PLL) and dc-voltage loop (DVL) can lead to the frequency coupling in the weak grid. Instabilities caused by PLL frequency coupling have been widely discussed. For DVL, past studies have analyzed the effect of DVL parameters on the degree of frequency coupling, but it is quite unclear how DVL parameters affect the ???

GRID-CONNECTED PHASE-LOCKED PHOTOVOLTAIC INVERTER



. This thesis focuses on the boost converter and single phase VSI used with photovoltaic electricity generating systems in grid tied applications. A simple power control method is proposed. The control of time variant systems is more complicated compared to ???



The basic block diagram of the grid-connected photovoltaic system is shown in Figure 1a. The solar photovoltaic system is connected to the grid through a DC/DC converter and an IGBT-based inverter. To synchronize ???



In residential applications, typically a single-phase grid-connected inverter is used as the interface between the PV arrays and the single-phase utility grid. To achieve high efficiency, low cost, small size and lightweight, transformerless PV inverters are becoming a popular solution. However, without the galvanic isolation of the



In this paper a phase lock loop-based grid-tied solar inverter is designed and verified in MATLAB. Here PLL has been utilized so as to synchronize the yield voltage of inverter with framework voltage [3]. Thus, to achieve the same a sinusoidal reference is generated from PLL Output which generates PWM signal which is controlled by grid voltage [7]. This paper proposes a ???



In this study, the design of output low-pass capacitive???inductive (CL) filters is analyzed and optimized for current-source single-phase grid-connected photovoltaic (PV) inverters. Four different CL filter configurations with varying damping resistor placements are examined, evaluating performance concerning the output current's total harmonic distortion ???

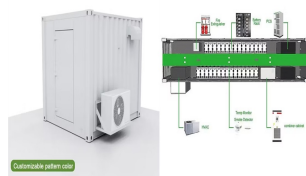
GRID-CONNECTED PHASE-LOCKED PHOTOVOLTAIC INVERTER



The inverter is connected to the PV array to obtain a DC active power, P so that the system would have a close-loop feedback from the PV to Inverter and then to the Grid. This paper proposes a combination of hysteresis and PQ theory to create the gating pulses for the inverter and to provide synchronization between the PV and grid parameters.



Typically grid connected PV systems require a two-stage conversion vis-?-vis dc- dc converter followed by a dc-ac inverter. But these types of systems require additional circuits which result in conduction losses, sluggish transient response and higher cost [].An alternative could be eliminating the dc-dc converter and connecting the PV output directly to ???



An array of solar panels is connected to the mains through a three-phase active voltage-source inverter and a step-up transformer. The inverter synchronizes to the grid by means of a robust phase-locked loop (PLL), using input's quadrate method, and a multi-variable filter removes voltage harmonics caused by unbalance and distortion. The PWM active inverter ???



Abstract This paper proposes a modified PQ method integrated with hysteresis current control (HCC) used in a grid-connected single-phase inverter for photovoltaic (PV) renewable energy system. The main aim is to achieve a smooth control of unidirectional power flow from the solar PV to the inverter and then from the inverter to the load, and yet ???

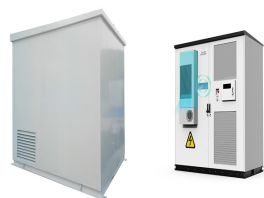


3 ? Zhang Z et al (2021) Domain of attraction's estimation for grid connected converters with phase-locked loop. IEEE Trans Power Syst 37(2):1351???1362. Article Google Scholar ???

GRID-CONNECTED PHASE-LOCKED PHOTOVOLTAIC INVERTER



1 Introduction. Islanding is a condition in which a part of the utility system containing both load and distributed generations (DGs) remains stimulated while disconnected from the rest of the utility grid [1, 2]. The islanding detection is an obligatory element for the photovoltaic (PV) inverters as indicated in global standards and rules [1].



Download scientific diagram | Three phase grid connected inverter control for PV system A. Phase Locked Loop (PLL): from publication: Dynamics of voltage source converter in a grid connected solar



This paper proposes a single-stage, 5-L common-ground-based inverter for grid-connected photovoltaic (PV) applications. The suggested design is able to enhance the PV input voltage by charging and discharging the capacitors in sequence. In order to achieve this, a peak current controller-based method that controls both the active and reactive powers that are ???



Assuming the initial DC-link voltage in a grid-connected inverter system is 400 V, $R = 0.01 \Omega$, $C = 0.1 F$, the first-time step $i=1$, a simulation time step Δt of 0.1 seconds, and constant grid voltage of 230 V use the formula below to get the voltage fed to the grid and the inverter current where the power from the PV arrays and the output provided to the grid are ???



The growing integration of photovoltaic (PV) power into the grid has brought on challenges related to grid stability, with the boost converter and the inverter introducing harmonics and instability, especially under non-linear loads and environmental changes. Therefore, conducting practical testing on grid-connected PV systems under various conditions can be ???

GRID-CONNECTED PHASE-LOCKED PHOTOVOLTAIC INVERTER



An array of solar panels is connected to the mains through a three-phase active voltage-source inverter and a step-up transformer. The inverter synchronizes to the grid by means of a robust phase



inverter input side and the PV array and is then connected to the grid through the transformer as Energies 2020, 13, 4185; doi:10.3390 / en13164185 / journal / energies Energies



of inverter with electrical grid are discussed. A. Phase Locked Loop (PLL) A Phase Locked Loop (PLL) is an electronic circuit with a voltage or current driven oscillator that is constantly adjusted to match in phase with the (and thus lock on) the frequency of an input signal. The PLL is used



This paper presents a control scheme for single phase grid connected photovoltaic (PV) system operating under both grid connected and isolated grid mode. The control techniques include voltage and current control of grid-tie PV inverter. During grid connected mode, grid controls the amplitude and frequency of the PV inverter output voltage, and the ???



Grid-connected PV inverters have traditionally been thought as active power sources with an emphasis on maximizing power extraction from the PV modules. While maximizing power transfer remains a top priority, utility grid stability is now widely acknowledged to benefit from several auxiliary services that grid-connected PV inverters may offer.