

THE PUMPED STORAGE POWER STATION LOCATION



The Snowy 2.0 expansion involves the construction of a 2,000-MW underground pumped-storage hydroelectric power plant that will link two existing water reservoirs. The project features 27 km of tunnels a?? waterways, auxiliary and access tunnels - and an underground power station measuring 22 m wide, 50 m high, 250 m long and located beneath



Figure 2: The plot above visualises (logarithmic scale used) the estimated discharge durations relative to installed capacity and energy storage capacity for some 250 pumped storage stations currently in operation, based on information from IHA's Pumped Storage Tracking Tool. The vast majority of pumped storage stations have a discharge duration longer a?|



87 . The following page lists all pumped-storage hydroelectric power stations that are larger than 1,000 MW in installed generating capacity, which are currently operational or under construction. Those power stations that are smaller than 1,000 MW, and those that are a?|



Guangzhou Pumped Storage Power Station has a total capacity of 1,200MW and was developed in two stages (1993-1994 & 1999-2000). Hong Kong Pumped Storage Development Company, Limited (PSDC) is wholly-owned by CLP, which has the contractual rights to use the equivalent of half of the first stage of the project (600MW) for 40 years until 2034.



Pumped storage hydropower (PSH) is a type of hydroelectric energy storage. It is a configuration of two water reservoirs at different elevations that can generate power as water moves down from one to the other (discharge), passing through a turbine.

HE PUMPED STORAGE POWER STATION LOCATION



The pumped storage power station is flexible to start, can realize effective storage of electric energy, and has superior peak and frequency modulation effects, which is beneficial to provide



The power station was a pure pumped-storage facility, using the Pacific Ocean as its lower reservoir, with an effective drop of 136 m and maximum flow of 26 m³/s. [2] Its pipelines and pump turbine were installed underground. [2] Its maximum output was approximately 2.1% of the maximum power demand in the Okinawa Island recorded on August 3, 2009. [4]The upper a?|



Pumped storage hydropower (PSH) is a form of clean energy storage that is ideal for electricity grid reliability and stability. PSH complements wind and solar by storing the excess electricity a?|

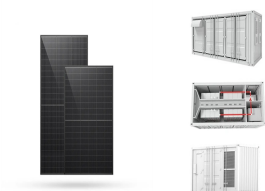


Concept. Pumped-storage power plants are structured around two bodies of water, an upper and a lower reservoir 1 (see the diagram below).. At times of very high electricity consumption on the grid, the water from the upper reservoir, carried downhill by a penstock, drives a turbine and a generator to produce electricity, which is used to meet the increased a?|



The construction of pumped storage power stations using abandoned mines would not only overcome the site-selection limitations of conventional pumped storage power stations in terms of height difference, water source, environment, etc. [18,19], but would also have great significance for the smooth availability of green energy, thus improving

HE PUMPED STORAGE POWER STATION LOCATION



Advantages and disadvantages of pumped storage schemes Pumped storage schemes (and hydro-electrical stations) respond very quickly to changes in the demand for electricity. Coal-fired power station requires several hours from cold start before it can start generate power, therefore pumped storage schemes are preferred as "peaking" stations.



It will be created by a 100.6m-high CFRD and have an adjusted storage capacity of 12.03Mcm. Henan Tianchi pumped storage power plant make-up. The Henan Tianchi pumped storage hydroelectric power plant will comprise an underground powerhouse equipped with four single-stage, vertical shaft Francis reversible pump turbine units of 300MW capacity a?]



The pumped storage power station realizes grid connected power generation through the conversion between the potential energy of surface water and mechanical energy. It has become the strategic resource of UHV power grid with its low valley peak regulation and emergency standby function. The green basic design and design of the pumped storage



One of the largest pumped storage power stations in the world. First Class Hydro Power Station award in PRC in 1996. Unmanned operation in 2001. Selected as one of 100 projects to commemorate the 60th anniversary of the founding of New China. The first station in the Mainland to be awarded NOSA 5 Stars for Safety Management.



The following page lists all pumped-storage hydroelectric power stations that are larger than 1,000 MW in installed generating capacity, which are currently operational or under construction. Those power stations that are smaller than 1,000 MW, and those that are decommissioned or only at a planning/proposal stage may be found in regional lists, listed at the end of the page.

HE PUMPED STORAGE POWER STATION LOCATION



Location. Zhen'an County, Shaanxi province, China. Capacity. 1,400MW. Construction Started. August 2016. Estimated Investment. JPY8.85bn (\$1.32bn) Expected Completion. 2023. The major structures of the pumped storage power station include upper and lower reservoirs, water delivery system, underground powerhouse, and switchyards.



Pumped-storage hydroelectricity (PSH), or pumped hydroelectric energy storage (PHES), is a type of hydroelectric energy storage used by electric power systems for load balancing. A PSH system stores energy in the form of gravitational potential energy of water, pumped from a lower elevation reservoir to a higher elevation. Low-cost surplus off-peak electric power is typically a?



GE was selected in 2017 by Anhui Jinzhai Pumped Storage Power Co., LTD, one of the divisions of State Grid Xin Yuan, to supply four new 300MW pumped storage turbines, generator motors as well as the balance of plant equipment for the Anhui Jinzhai pumped storage power plant located in the Jinzhai County, Anhui Province, China.



Optimizing peak-shaving and valley-filling (PS-VF) operation of a pumped-storage power (PSP) station has far-reaching influences on the synergies of hydropower output, power benefit, and carbon dioxide (CO₂) emission reduction. However, it is a great challenge, especially considering hydro-wind-photovoltaic-biomass power inputs.

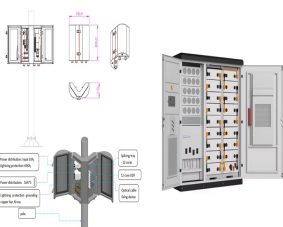


Bistrice Pumped Storage hydroelectric plant is a hydroelectric power plant in pre-construction in Bistrice, Leskovac, Jablanica District, Serbia. Project Details The map below shows the approximate location of the hydroelectric power plant:

THE PUMPED STORAGE POWER STATION LOCATION



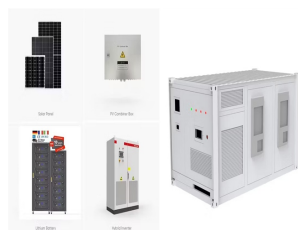
The Nant de Drance pumped storage power plant is located 600 m below ground in a cavern between the Emosson and Vieux Emosson reservoirs in the canton of Valais. The power plant works like a gigantic battery: during demand peaks, a?



Large scale renewable energy, represented by wind power and photovoltaic power, has brought many problems for the safe and stable operation of power system. Firstly, this paper analyzes the main problems brought by large-scale wind power and photovoltaic power integration into the power system. Secondly, the paper introduces the basic principle and engineering a?



1 Introduction. In the context of global energy structure transformation, pumped storage power plants play a crucial role in the power system (Zhang et al., 2024a).As renewable energies such as wind and solar power become more widely used, the balance between supply and demand in the power system faces unprecedented challenges (Jia et al., 2024).With their a?



Hydroelectric and pumped storage, rather than coal-fired, power stations are preferred as "peaking" power stations. They can be brought on-stream within three minutes, whereas a coal-fired power station requires several hours from cold start before it can start generating power.



The Bath County Pumped Storage Station has a maximum generation capacity of more than 3 gigawatts (GW) and total storage capacity of 24 gigawatt-hours (GWh), the equivalent to the total, yearly electricity use of about 6000 homes.. Construction began in March 1977 and upon completion in December 1985, the power station had a generating capacity of a?

THE PUMPED STORAGE POWER STATION LOCATION



Introduction. Pumped storage power plants are a type of hydroelectric power plant; they are classified as a form of renewable (green) power generation.. Pumped storage plants convert potential energy to electrical energy, or, electrical energy to potential energy.They achieve this by allowing water to flow from a high elevation to a lower elevation, or, by pumping water from a a?|



OverviewBasic principleTypesEconomic efficiencyLocation requirementsEnvironmental impactPotential technologiesHistory



The Steenbras Power Station, also Steenbras Hydro Pump Station, is a 180 MW pumped-storage hydroelectric power station commissioned in 1979 in South Africa.The power station sits between the Steenbras Upper Dam and a small lower reservoir on the mountainside below. [1] It acts as an energy storage system, by storing water in the upper reservoir during off-peak hours and a?|



Small and medium-sized pumped storage power station is the collective name of medium and small pumped storage power station, which refers to the pumped storage power station with a total storage capacity of less than 100 million cubic meters in the reservoir area and an installed capacity of less than 300,000 kW, and the approval and construction time of such a?|



the Dniester Pumped Storage Power Station (Dniester . PSPS) is the most important factor in the participation of . Ukraine in ensuring the state energy independence at the . global level.

HE PUMPED STORAGE POWER STATION LOCATION



The pumped-storage power station working together with the energy storage battery can increase the response speed more quickly, improve the fault ability, achieve multi-time scale coordinated control, and greatly improve the comprehensive performance of pumped-storage power stations.

2.2.3 Key technology of combined operation According to the



Pumped storage: underground challenges. As Europe's push for wind and solar drives pumped storage, part of the design and maintenance challenge for hydro lies underground. In its announcement, Strabag said at the time the estimated investments to build either power station were more than Euro750 million and Euro450 million, respectively



Power plant details for Fairfield Pumped Storage, a hydroelectric power plant located in Jenkinsville, SC. View the monthly generation and consumption, generator details, and more for Fairfield Pumped Storage

Plant Name	Plant Location	Annual Generation
#91	Wolf Creek:	
Jamestown, KY:		470.5 GWh
#92	Narrows (NC)	
Badin, NC:		462.5 GWh
#93	Jaybird	