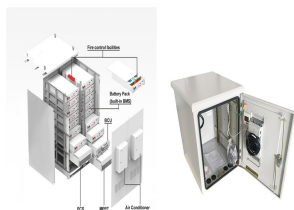
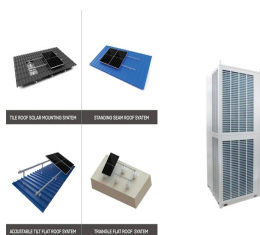


# HEARD AND MCDONALD ISLANDS

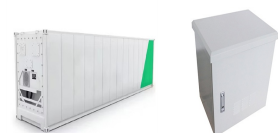
## AMPLENESS 10KW



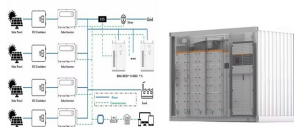
?????????? 3/4 ?? ???u???? ?, ? 3/4 ??????? 3/4 ?????? ??????????  
 3/4 ??? 1/2 ???>???? (??? 1/2 ???>>. Heard Island and McDonald  
 Islands, ??? 3/4 ????????????? 1/2 ? 1/2 ? 3/4 HIMI) ??? ? 1/2 ?u??? 3/4  
 ?>????? 3/4 ?? ? 1/2 ?u? 3/4 ???,?????u? 1/4 ????? [1]  
 ???????,???u?>???? ?? ?????? 1/2 ? 3/4 ?? ??????????, ??? 1/2  
 ???,???????? 3/4 ??? 3/4 ? 3/4 ???u??? 1/2 ??,??? 3/4 ?????? 3/4 ?,??  
 ?,?? ????????? ? 3/4 ??? 1/2 ? 3/4 ??? 1/2 ????? ? 3/4 ??????? 3/4 ???  
 3/4 ?? ??? ???u???? ?, ?????????? 3/4 ? 1/2 ???>????, ?? ??????????u  
 ?,??



Commonwealth of Australia since 1953. The Heard Island and McDonald  
 Islands Act 1953 provides the legislative basis for the Territory's  
 administration. Administration of the Territory is the responsibility of the  
 Australian Government department that administers the Heard Island and  
 McDonald Islands Act 1953. This responsibility has



? 1/4 ?? 1/4 ? Heard Island and McDonald Islands,? 1/4 ?HIMI? 1/4  
 ?,1947 ,1997? 1/4 ?????? 1/4 ????? 1600? 1/4 ?1000,3700



Management plans also explain what the objectives are for managing the  
 area, and what the managers will do to help meet those objectives.. It is a  
 requirement of the Environment Protection and Biodiversity Conservation  
 Act 1999 (the EPBC Act), under which the Heard Island and McDonald  
 Islands (HIMI) Marine Reserve was declared, that a management plan be  
 prepared ???



? 1/4 ?? 1/4 ? Heard Island and McDonald Islands,? 1/4 ?HIMI? 1/4  
 ?,1947 ,1997? 1/4 ?????? 1/4 ????? 1600? 1/4 ?1000,3700

# HEARD AND MCDONALD ISLANDS

## AMPLENESS 10KW



A Ilha Heard e as Ilhas McDonald (nome oficial: Territ rio das Ilhas Heard e McDonald), [1] [2] [3]   um territ rio externo australiano que compreende um grupo vulc nico de ilhas ant rticas in spitas e desabitadas, localizadas no oceano  ndico, a cerca de dois ter os do caminho de Madag scar para a Ant rtida. A  rea total do grupo   de 372 km  e tem 101,9 km de litoral.



(  1/4   Heard Island and McDonald Islands,   1/4   HIMI),, 1947, 1997 (       



Las Islas Heard y McDonald son un conjunto de islas deshabitadas que forman un territorio externo de Australia desde 1947, situadas en el oc ano  ndico.. La isla Heard es monta osa, dominada por el pico Mawson, un volc n de 2745 m de altura. Con esta altura, el pico Mawson se erige como la monta a m s alta de Australia vecina, la isla McDonald es peque a y rocosa.



Heard  v ostrov nikdo nenav  t vil a  3/4 do poloviny 50. let 19. stolet . Pravd  podobn   jej jako prvn  spat  il britsk  lovec tule     Peter Kemp dne 27. listopadu 1833. Kemp cestoval lod  Magnet z Kerguelen   do Antarktidy a  dajn   jej zanesl do n mo  n ch map.. 25. listopadu 1853 ostrov uvid  l americk  lovec tule     a kapit n obchodn  lodi Oriental John Heard p  i cest   z



The Territory of Heard Island and McDonald Islands (HIMI) is an Australian external territory comprising a volcanic group of mostly barren Antarctic islands, about two-thirds of the way from Madagascar to Antarctica. The    

# HEARD AND MCDONALD ISLANDS

## AMPLENESS 10KW



? 1/4 ?Heard Island? 1/4 ?,3800,2000,40,???1953,???1997??????????  
???



Located in the Southern Ocean, this Australian external territory comprises mainly two volcanic islands, Heard Island and the McDonald Islands, featuring stark volcanic landscapes, glaciers, and the highest mountain in Australian territory, Mawson Peak. Significance.



Heard Island and McDonald Islands. Antarctica. Page last updated: November 27, 2024. Photos of Heard Island and McDonald Islands. view 3 photos. Country Flag. View Details. Country Map. View Details. Locator Map. View Details. Contents. Introduction. Geography. People and Society



OverviewGeographyHistoryWildlifeAdministration and economySee alsoFurther readingExternal links



Heard and McDonald Islands Ethernet, Heard and McDonald Islands. 40 likes. Business & Residential Broadband, Ethernet, Hosted PBX & VoIP, MPLS Networking, Data Center Colocation, Mobile Management &

# HEARD AND MCDONALD ISLANDS

## AMPLENESS 10KW



Heard Island and McDonald Islands is the only sub-Antarctic island group with almost no human-introduced species. Beyond "the shallows" ??? the case for expanding the reserve When the original reserve was designed it was noted that future management should consider whether sufficient representation of the different kinds of habitats



Les ?les Heard-et-MacDonald, en anglais Heard and McDonald Islands et Territory of Heard Island and McDonald Islands [1], sont un territoire ext?rieur de l'Australie situ? dans le sud de l'oc?an Indien, sur la plaque antarctique. Il est constitu? d'un petit archipel, les ?les McDonald, ainsi que d'une ?le isol?e, l'?le Heard. Situ? ? 422 km au sud-sud-est des ?les Kerguelen, ? 1 ???

114KWh ESS



Satellitbild av sydspetsen av Heard Island. Kap Arkona ses p? v?nster sida av bilden, med Lied Glacier strax ovanf?r och Gotley Glacier strax nedanf?r. Big Ben Volcano och Mawson Peak ses l?ngst ned till h?ger p? bilden. Heard- och McDonald?arna, Heard and McDonald Islands, ?r en obobodd australisk ?grupp i s?dra Indiska oceanen.



Heard Island and McDonald Islands Heard Island and McDonald Islands are uninhabited, barren, Subantarctic islands in the Southern Ocean, far due south of India and roughly 400 km southeast of Kerguelen of the French Southern and Antarctic Lands.



? 1/4 ?? 1/4 ? Heard Island and McDonald Islands, ? 1/4 ? HIMI ? 1/4 ?, 1947, 1997 ? 1/4 ????? 1/4 ????? 1600 ? 1/4 ? 1000, 3700, ??? 80%, ???

# HEARD AND MCDONALD ISLANDS

## AMPLENESS 10KW



De Heard en McDonaldeilanden (Engels: Heard Island and McDonald Islands (HIMI)) zijn een onbewoonde onherbergzame subantarktische eilandengroep in het zuiden van de Indische Oceaan op de breedtegraad van Vuurland en op dezelfde lengtegraad als Mumbai. Ze liggen op 1700 km van Antarctica en op 4100 km zuidwestelijk van Perth eilanden vallen onder de ???



Heard Island and McDonald Islands in the Southern Ocean A map of Heard Island and McDonald Islands. Heard Island, by far the largest of the group, is a 368-square-kilometre (142 sq mi) mountainous island covered by 41 glaciers [21] (the island is 80% covered with ice [1]) and dominated by the Big Ben massif has a maximum elevation of 2,745 metres (9,006 ft) at ???



Heard Island and McDonald Islands are located in the Southern Ocean, approximately 1,700 km from the Antarctic continent and 4,100 km south-west of Perth. As the only volcanically active subantarctic islands they "open a window into the earth", thus providing the opportunity to observe ongoing geomorphic



????,??,??,?????,(R)?,??,?????,?????,??,??,<?,,?????????,??,??,??  
 ???,??,??,??,-?,??,??,??,????? (?,-?,??,??,??,??,(C): Heard Island and  
 McDonald Islands) ?,??,??,?????,-?,??,??,??,??,??,??,?????,?  
 ?,??,??,?????,??,?????,??,??,?????,(R)?,??,?????,?????,??,??,<?,,??,  
 ?????????,??,??,?????,??,??,??,-?,??,??,??,????? (Territory of Heard  
 Island and McDonald Islands) [1] [2] ?????,?????,??,??,??,?????,??,?



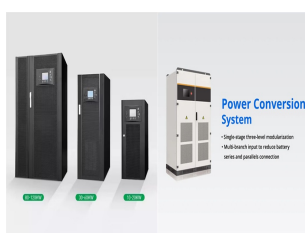
The first sighting of the larger island, Heard, is attributed to the British captain Peter Kemp in 1833, but also to the American captain John J. Heard, in 1853. Much smaller McDonald island, 27 mi (43.5 km) to the west, was spotted a ???

# HEARD AND MCDONALD ISLANDS

## AMPLENESS 10KW



**History & Geography.** In the late 1850s, the islands were discovered by United Kingdom, and in 1910 were formally annexed with the raising of the Union Jack.. They are now administered by Australia. Nowadays, only some people can visit the island, as it is a protected nature reserve, and a place for scientific research. Surprisingly, Heard Island and ???



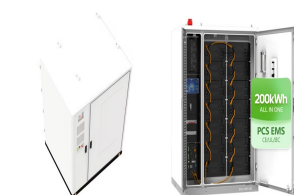
Heard Island and McDonald Islands are uninhabited, barren, Subantarctic islands in the Southern Ocean, far due south of India and roughly 400 km southeast of Kerguelen of the French Southern and Antarctic Lands. The islands are administered by Australia and listed as a UNESCO World Heritage site. Although it's administered by Australia, the islands are approximately 4,000 ???



**Heard and McDonald Islands** This is one of the wildest and remotest places on earth. Heard Island is dominated by Big Ben, Australia's highest mountain and an active volcano, under a deep mantle of snow and glaciers. On the horizon, the volcanic McDonald Islands rise precipitously out of the world's stormiest waters.



The barren island of Heard and McDonald were once under the United Kingdom before it became a territory of Australia. The UK union jack flag is considered the only previous flag to have been used on the Heard and McDonald Islands. It was first hoisted on the island in 1910. Later on, in 1947, the island fell into Australian authority, and since



McDonald Island is much smaller (2.5 km<sup>2</sup>), about 100 000 years old and totally ice-free, and is predominantly composed of phonolitic rocks. 9, 10 During the campaign, signs of volcanic activity