

# HOW BIG IS THE 48V PHOTOVOLTAIC PANEL



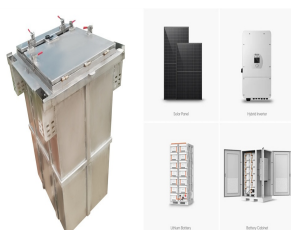
UK 2024 Solar Panels : 500 watt Solar Panels How much power can a 500-watt solar panel generate, devices it can power, and how to increase its efficiency. You can also increase the voltage to 36V or 48V, dependent on your need. Please keep in mind that if you are connecting many solar panels, you must ensure that they are all grounded and



This complete solar power system offers an all-in-one solution for off-grid living, providing reliable energy independence. The complete solar panel kits designed to meet the needs of both residential and commercial applications. The 48V solar system is optimized for high-efficiency performance, featuring a powerful 12kW inverter and a robust solar panel kit with 5400W panels.



Step 1: Turn on all the appliances and devices you want to power with the solar panel system. Step 2: Use a clamp meter to measure the current consumption in amps (A) by clamping it around the phase wire of your electric meter. Step 3: The clamp meter will display the current consumption in amps. Step 4: Multiply the amps by the system voltage (e.g., 120V in ???)



With a 48V battery, your solar panel voltage must be higher than 48 volts to produce a charge. By connecting solar panels in a series you can increase its voltage. Take 3 x 350W 24V solar panels and you get 72 volts, the ideal number for a 48V system ( $24V \times 3 = 72V$ ). A 100 watt solar panel can provide 500 watts on a clear, sunny day, but



To find the solar panel output, use the following solar power formula:  

$$\text{output} = \text{solar panel kilowatts} \times \text{environmental factor} \times \text{solar hours per day}$$
. The output will be given in kWh, and, in practice, it will depend on how sunny it is since the number of solar hours per day is just an average.

# HOW BIG IS THE 48V PHOTOVOLTAIC PANEL



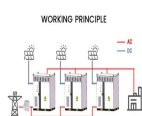
Most panels on the market have a capacity of 300 watts, making it the ideal choice for achieving the desired capacity. If you need different power requirements, check out 7 kW solar systems. How Big is a 8 kW Solar ???



The voltage from your solar panels varies all of the time as the intensity of the sun changes, although it does remain relatively consistent. If you have a nominally 12-volt solar panel, its actual output will range from 16 to 18 volts.



A highly popular name in portable solar products, EcoFlow is the only reputed brand that offers a single, foldable 400 W solar panel (unlike Renogy's multi-solar-panel kit). The panel impresses not only with its ???



ECO-WORTHY 600W 12V Solar Panel Off Grid RV Boat Kit: 4pcs 150W Solar Panels + 12V 40A MPPT Charger Controller + Bluetooth Module 5.0 + 16Ft Solar Cable + Z Mounting Brackets Check Price Step 3: Calculate the capacity of the Solar Battery Bank



1- Solar panel wattage: This is the watts rating on each of your solar panels. But even with a 150/35 model, you can still add another panel if you add a battery and upgrade to a 48V battery bank. However, if you do get a 150/45 model, you'll be able to add up to 3 more panels later if you want, as long as you upgrade to a 48V battery

# HOW BIG IS THE 48V PHOTOVOLTAIC PANEL



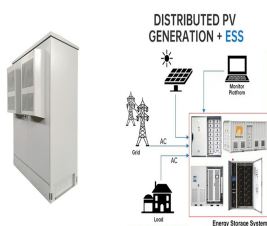
Result: You need about 500 watt solar panel to charge a 12v 200ah lithium battery in 6 peak sun hours using an MPPT charge controller. What Size Solar Panel To Charge 200ah Battery? Here are some charts on what size solar panel you need to charge 12v and 24v 200ah lead acid or lithium (LiFePO4) battery.



Big solar panel system: 1kW, 4kW, 5kW, 10kW system. These include several solar panels connected together in a system (2 ??? 50 solar panels). Now, we need to understand what these "maximum power ratings" actually mean. These are the solar panel outputs at ideal conditions. These ideal solar conditions are known as STC or Standard Test



Some common solar panel system sizes include a 3kW solar panel system, a 4 kilowatt solar panel system and a 5kW solar panels. For instance, a typical 2kW solar panel system suited for 1-3 people will need ???



For example, a 12v solar panel might put out up to 19 volts. While a 12v battery can take up to 14 or 15 volts when charging, 19 volts is simply too much and could lead to damage from overcharging. Solar charge ???



48 volt solar panel for sale | Best prices.48v solar panel buy now at best prices | 48v solar panels choose now and save money - A1 Solar Store. Menu; Store. Store; Solar panels . Back. Generally, if you want your system to produce more than 5 kW, it is best to go for 48v solar panels. Nowadays, big houses, especially off-grid, tend to use

# HOW BIG IS THE 48V PHOTOVOLTAIC PANEL



Suppose the solar panel array has 30A (amp) output current. In that case, the charge controller selected will have to cope with a minimum of 30 A. 2400W on 36V (66.67A) or 3200W on 48V battery bank (66.67A) A 100A MPPT charge controller can support 1300W solar input for a 12V battery bank (108.33A) or 2600W on a 24V battery bank (108.33A)



That's basically a 66x39 solar panel. But what is the wattage? That is unfortunately not listed at all. 72-cell solar panel size. The dimensions of 72-cell solar panels are as follows: 77 inches long, and 39 inches wide. That's a 77x39 solar panel; basically, a longer panel, mostly used for commercial solar systems. 96-cell solar panel size.



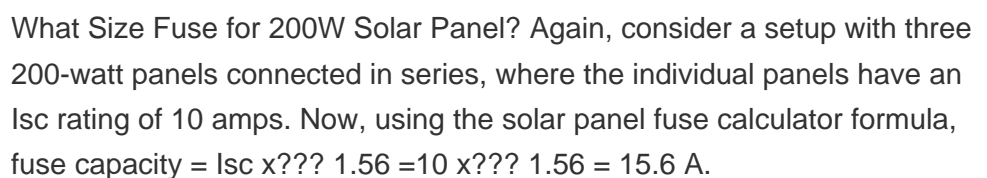
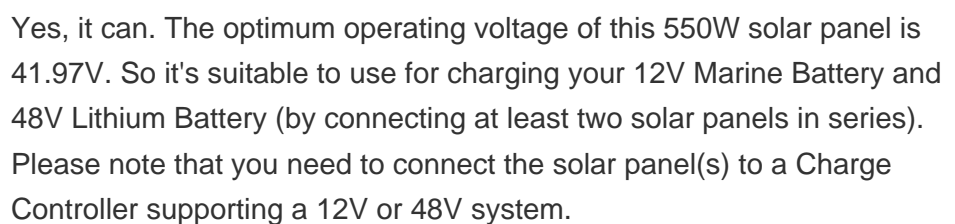
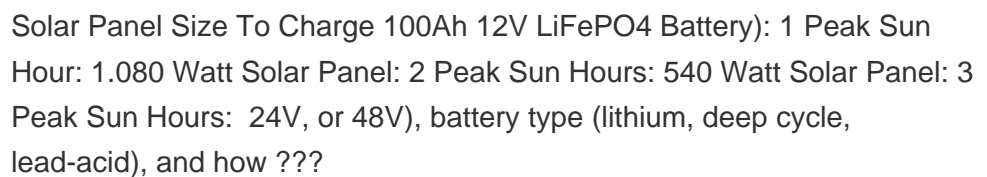
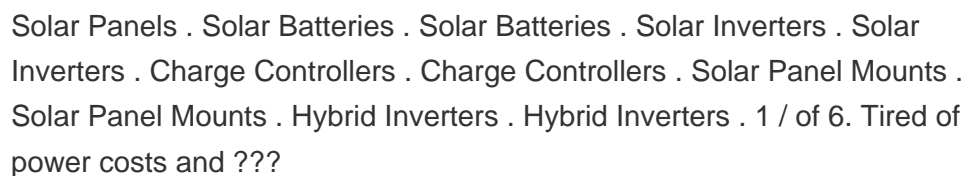
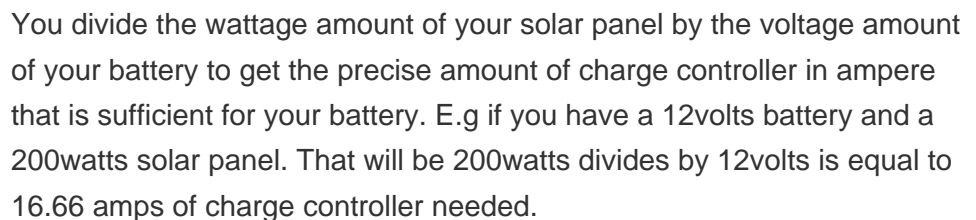
MPPT stands for Maximum Power Point Tracker; these are far more advanced than PWM charge controllers and enable the solar panel to operate at its maximum power point, or more precisely, the optimum voltage and current for maximum power output. Using this clever technology, MPPT solar charge controllers can be up to 30% more efficient, depending on the ???



The Open Circuit Voltage (Voc) rating of a solar panel, on the other hand, indicates the voltage measured across the panel's terminals under ideal conditions when no load is connected. For instance, as shown in the image above, my solar panel has a Voc of 22.5 Volts. This means that under Standard Testing Conditions, the panel should measure



500 W solar panels are used mainly on large-scale installations where the panel's physical size doesn't matter. But they're not ideal for a solar panel system on the roof of your home. When someone makes a cost-effective 500 W panel in a more reasonably sized 120 half-cell module, sign me up. What is the best solar panel wattage for your home?



# HOW BIG IS THE 48V PHOTOVOLTAIC PANEL



Solar Panel Charge Time Calculator: Find out how fast your solar panel will charge your battery bank. Solar Panel Angle Calculator: Find the best solar panel angle for your location. References. Global Horizontal Irradiation Map ???



A 20A MPPT charge controller can be enough for a small solar panel system, typically handling around 300-400 watts of solar panel capacity. How many panels can a 30 amp MPPT charge controller handle? A 30 amp MPPT charge controller can handle around 400-600 watts of solar panel capacity, so the number of panels depends on their individual wattage.



Review your solar panel system's capacity and output. Consider the energy demands of specific appliances. Analyze how options like the Tesla Powerwall 2 fit with your energy goals. This means, for a 6kW solar array ???



The most common solar panel sizes for residential installations are between 250W and 400W, while larger commercial installations may use panels up to 500W or more. How Big Are Solar Panels in the UK? As you can imagine, you can get almost any size solar panel you desire, from single tiles to ones that cover the entire roof.