

HOW DOES THE ENERGY STORAGE STATION WORK OFFLINE



What is a battery energy storage system? A battery energy storage system (BESS) is an electrochemical device that charges (or collects energy) from the grid or a power plant and then discharges that energy at a later time to provide electricity or other grid services when needed.



Can a grid energy storage system store energy? Yes, residential grid energy storage systems, like home batteries, can store energy from rooftop solar panels or the grid when rates are low and provide power during peak hours or outages, enhancing sustainability and savings. Loading Grid energy storage is discussed in this article from HowStuffWorks. Learn about grid energy storage.



What is energy storage & how does it work? Today's power flows from many more sources than it used to???and the grid needs to catch up to the progress we've made. What is energy storage and how does it work? Simply put, energy storage is the ability to capture energy at one time for use at a later time.



Why is electricity storage system important? The use of ESS is crucial for improving system stability, boosting penetration of renewable energy, and conserving energy. Electricity storage systems (ESSs) come in a variety of forms, such as mechanical, chemical, electrical, and electrochemical ones.



How ESS is used in energy storage? In order to improve performance, increase life expectancy, and save costs, HESS is created by combining multiple ESS types. Different HESS combinations are available. The energy storage technology is covered in this review. The use of ESS is crucial for improving system stability, boosting penetration of renewable energy, and conserving energy.

HOW DOES THE ENERGY STORAGE STATION WORK OFFLINE



How can energy storage strengthen the grid? The job of the grid is to deliver electricity to every customer at 120 volts and 60 hertz. This is accomplished by adding or removing current from the grid. A storage device helps by adding or removing current exactly when needed. Read on to learn how energy storage can strengthen the grid.



A residential battery energy storage system can provide a family home with stored solar power or emergency backup when needed. Commercial Battery Energy Storage. Commercial energy storage systems are larger, typically from 30 kWh to 2000 kWh, and used in businesses, municipalities, multi-unit dwellings, or other commercial buildings and



How do battery energy storage systems work? Simply put, utility-scale battery storage systems work by storing energy in rechargeable batteries and releasing it into the grid at a later time to deliver electricity or other grid services. Without energy storage, electricity must be produced and consumed at exactly the same time.



Battery storage is a technology that enables power system operators and utilities to store energy for later use. A battery energy storage system (BESS) is an electrochemical device that charges (or collects energy) from the grid or a power plant and then discharges that energy at a later time

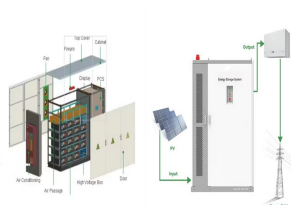


So, how does energy storage work? It works by accumulating excess energy ??? often generated from renewable sources ??? and storing it in various forms, such as chemical, kinetic, or thermal energy. This energy is eventually converted back into electrical power or its original form on demand, helping to stabilize the grid, reduce energy wastage

HOW DOES THE ENERGY STORAGE STATION WORK OFFLINE



The company is working with Snapping Shoals Electric Membership Corporation (SSEMC), a consumer-owned, non-profit cooperative utility provider in one of the nation's fastest-growing areas, to



7. Remember that you can listen to your offline stations in airplane mode, in areas with limited or no internet connectivity, or when you don't want to use your mobile data. By having the ability to listen to your downloaded offline stations, Pandora provides you with a seamless and uninterrupted music experience.



As we move to a time when clean energy is a must, the solar power story is inspiring. Fenice Energy, with 20 years of experience, is leading the way to a bright, clean energy future. It's working to light up homes and make countries more competitive in solar power. This is a win not just for one country, but for all of us.



OverviewConstructionSafetyOperating characteristicsMarket development and deploymentSee also

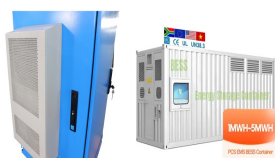


Fig.1. pumped storage plant with generation and pumping cycle. When the plants are not producing power, they can be used as pumping stations which pump water from tail race pond to the head race pond (or high-level reservoir).

HOW DOES THE ENERGY STORAGE STATION WORK OFFLINE



Overview of Battery Energy Storage Systems. A battery energy storage system consists of multiple battery packs connected to an inverter. The inverter converts direct current (DC) from the batteries into alternating current (AC), which is suitable for grid-connected applications or for powering electric loads.



Hi @ASH420hull, thanks for posting to community!. I moved your message over to a thread that I think is more similar to what is happening with you: Downloading Offline Stations Can you try disabling the offline listening feature and re ???



The idea behind thermal energy storage is that it off-sets the coincident peak that utilities see during the summer from HVAC electric demand. In a sense, a thermal energy system acts as a battery for a building's HVAC unit. How does thermal energy storage work? A thermal energy storage system utilizes the compressors in chillers, or RTUS, to



The term "energy storage tolling agreement" refers to a long-term PPA-type structure. In this article we will explore the term and its origins further, as well as providing links to two sample battery & energy storage tolling agreements???an Energy Storage Facility Agreement from Ontario ISO and an Energy Storage System Power Purchase Tolling Agreement from ???



The stations can ramp up power and produce energy quickly. In some cases, such as Sarpy County, energy can be produced in as little as 15 minutes. During the hottest days of summer, when demand is at its highest ??? usually in the late afternoon ??? more electricity is needed to feed the grid.

HOW DOES THE ENERGY STORAGE STATION WORK OFFLINE



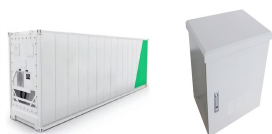
the energy production efficiency of biomass power plants; the use of biomass fuels in liquid fossil fuels. Biomass power plants have several advantages over conventional fossil fuels, and they are, crucially, a renewable means of generating energy. Let's ???



Storage technologies include pumped hydroelectric stations, compressed air energy storage and batteries, each offering different advantages in terms of capacity, speed of deployment and environmental impact. They're "super" because they store more energy than traditional capacitors, but they work the same way. When there's extra electricity



Battery storage, or battery energy storage systems (BESS), are devices that enable energy from renewables, like solar and wind, to be stored and then released when the power is needed most.. Lithium-ion batteries, which are used in mobile phones and electric cars, are currently the dominant storage technology for large scale plants to help electricity grids ???



As offline control photovoltaic (PV) plants are not equipped with online communication and remote control systems, they cannot adjust their power in real-time. Therefore, in a distribution network saturated with offline control ???



Finding the proper types of battery energy storage systems ensures the function of many commercial and residential applications. Understanding how the storage systems work can give you the best return on your system. The Basics of Battery Energy Storage. Battery energy storage consists of three primary steps. 1. Charge

HOW DOES THE ENERGY STORAGE STATION WORK OFFLINE



The hardware that delivers energy from an electrical source to charge an EV battery is an electric vehicle supply equipment (EVSE). EV charging stations work by supplying electricity to an EV's battery using either AC or DC power. Charging an EV's battery can be broken down into three main stages: connection, communication, and charging



Battery energy storage systems, or BESS, are a type of energy storage solution that can provide backup power for microgrids and assist in load leveling and grid support. There are many types of BESS available depending on your needs and preferences, including lithium-ion batteries, lead-acid batteries, flow batteries, and flywheels.



Hi @marypat1947,. To listen offline from an iOS device: Tap the Profile tab and then the Settings gear in the top right corner.; Toggle Offline Mode on.; Once Offline Mode has been enabled, you will see only the content in ???



The supercharger stations have both solar power and grid power to assist with charging needs from drivers. However, the primary source is through grid power from local companies. Tesla does the best they can to work with renewable energy companies when powering their charging stations.



A: Electricity is a secondary energy source which means that we get it from the conversion of other sources of energy, like coal, natural gas, oil, nuclear power and other natural sources, which are called primary sources. The energy sources we use to make electricity can be renewable (such as wind or solar) or non-renewable, but electricity

HOW DOES THE ENERGY STORAGE STATION WORK OFFLINE



Although using energy storage is never 100% efficient???some energy is always lost in converting energy and retrieving it???storage allows the flexible use of energy at different times from when it was generated. So, storage can increase system efficiency and resilience, and it can improve power quality by matching supply and demand.



Types of power plants Steam turbine. Most traditional power plants make energy by burning fuel to release heat. For that reason, they're called thermal (heat-based) power plants. Coal and oil plants work much as I've shown in the artwork above, burning fuel with oxygen to release heat energy, which boils water and drives a steam turbine. This basic design is ???



Another company that has put a lot of work into making solar work when the grid goes down is Enphase. The company's Ensemble energy management system works together with its microinverters to provide "grid-agnostic" solar power. That means it can send power to your appliances from your solar panels as long as the sun is shining brightly



Energy can be stored in batteries for when it is needed. The battery energy storage system (BESS) is an advanced technological solution that allows energy storage in multiple ways for later use. Given the possibility that an energy supply can experience fluctuations due to weather, blackouts, or for geopolitical reasons, battery systems are vital for utilities, businesses and ???



Powerwall gives you the ability to store energy for later use and works with solar to provide key energy security and financial benefits. Each Powerwall system is equipped with energy monitoring, metering and smart controls for owner customization using the Tesla app. The system learns and adapts to your energy use over time and receives over-the-air updates to add new ???

HOW DOES THE ENERGY STORAGE STATION WORK OFFLINE



A UPS or uninterruptible power supply is a device used to maintain power during power disturbances such as power dips and power outages. A UPS essentially acts like a power bank for your computer but with an automatic transfer switch (ATS) that provides instant power should a power failure occur.. A UPS is often used in business facilities, hospitals, schools, ???



Toggle Offline Mode off, and confirm that you'd like to remove the content from your device. Toggle Offline Mode on again, to reset the download process. Keep the Pandora app in the foreground of your device while your offline stations re-download. I hope this helps. Feel free to let me know how downloading your offline stations go. ????