

HOW HIGH CAN PHOTOVOLTAIC PANELS BE MOUNTED



Can solar panels be mounted on the ground? While most solar arrays are installed on rooftops, ground mounted solar panels make use of land space for optimal and high-volume generation, or in cases where a suitable roof isn't available. As most residential homes don't have tons of spare land, ground mounted PV is most often chosen for commercial properties or utility solar farms ???



The impact of direction on solar panel output. Your solar panel system's direction is one of the biggest factors in determining its output. This chart below uses an average of 26 arrays in Yorkshire that all have peak power ???



The fixing system used to hold solar PV panels on your roof must be strong enough to support the weight of the panels in all weather conditions, including strong wind. They also need to be able to withstand a wide range of temperatures and



Under typical UK conditions, 1m² of PV panel will produce around 100kWh electricity per year, so it would take around 2.5 years to "pay back" the energy cost of the panel. PV panels have an expected life of least 25 to 30 years, so ???



Becoming very popular over the last few years. Having an East/West system means that the ballast required is very low because we can mount the panels back to back, reducing wind resistance. It also means you can get much more power in a limited space. Many people are surprised as they think Solar PV panels must be south facing.

HOW HIGH CAN PHOTOVOLTAIC PANELS BE MOUNTED



There are several ways to secure a solar panel to a roof without drilling. You can use adhesive or industrial-strength magnets to attach the panel to the roof. You can also use roof-mounted racks or rail systems that do not require drilling. Finally, you can use ballasted racks to hold the solar panel in place without using screws or bolts.



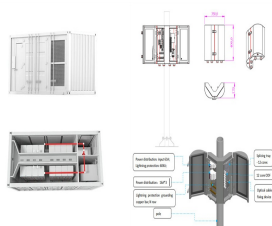
Advantages: The PVKIT HUR is the first rail-less PV mounting system designed for high wind uplift performance of installed solar panels, such as coastal communities and other high-wind and hurricane zone areas. It's the first metal roof PV mounting system to achieve FM Approvals toughest PV Standard???FM4478. IronRidge Tilt Mount supports



Properties in countries at high latitudes, such as the UK, are also better candidates for wall-mounted solar panels than properties in areas closer to the equator. another type of vertical solar panel system. How much do wall-mounted solar panels cost? A homeowner in a typical three-bedroom house in the UK can expect to pay around ?7,026



Green Akku, a German-based solar panel supplier, provides solar panel fencing kits that can mount to pre-existing fences. These kits include PV modules, micro-inverters and mounting material. However, you would need to apply for planning permission if you are erecting a fence that is over 1 metre high and is adjacent to a road used by



Finding an unshaded spot is best, but sometimes shading is unavoidable. Some solar panel systems can minimise the impact of shading using "optimisers". Solar optimisers help improve the overall performance of your solar panel system. So, if one panel is shaded, it doesn't impact how much electricity the other panels can generate.

HOW HIGH CAN PHOTOVOLTAIC PANELS BE MOUNTED

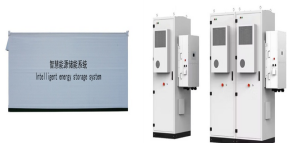


For these reasons, it is more common that ground-mounted solar panel systems are used for commercial solar projects or large-scale solar farms.

The panels are taller than 4m high; The solar panels are less than 5 meters from the boundary of the property; The solar panels take up more than 9 meters squared; The solar panels are facing



Renogy's Bifacial 550-watt Monocrystalline Solar Panel can capture sunlight from both sides, providing up to 30% more energy than traditional solar panels. Determine the Installation Expense. The upfront investment in installing the solar panel can be expensive; therefore, specify the amount you can spend on setting up a solar system.



Solar panel mounts secure solar panels either to your roof or on the ground. Solar panel mounts typically account for 10% of the total solar panel installation cost. IronRidge and Unirac are the best options for roof and ground mount solar ???



Solar panel arrays can be mounted in many ways, so it's important to understand considerations like materials, costs, and orientation before deciding on a mounting system. Settling for a flawed system can put you at risk of experiencing damage to your solar system during high winds or weather events ??? and the last thing you want is to



Unlike typical solar panel systems, ground-mounted panels are fixed into the floor, instead of on the roof. Although they're commonly used for solar farms, they can also be used in domestic solar panel setups. Increased panel efficiency, due to high levels of ventilation ; Cons. More susceptible to accidental damage ; Higher potential for

HOW HIGH CAN PHOTOVOLTAIC PANELS BE MOUNTED



Setting up the modules on an old or damaged roof creates a high risk of collapse, so if you're not sure about the safety of a rooftop mounted solar system, give thought to installing ground mount solar panels. In this sense, ground installations are safer, as with a ground solar panel system, you won't have to worry that your roof is on the



No-frills fixed mount panels like these are the lowest costing ground-mount solar panels. If you are looking for a solution that also provides aesthetic and functional enhancements to your backyard, a solar panel shade structure like a solar pergola or solar panel patio cover may be the fixed mount system for you. While these structures provide



As the Solar Panels are installed onto a bracket which tilts the panel to around 30 degrees. Flat Roof Solar panels are usually mounted onto a tub, and weighed down by ballast (gravel, paving slabs, bricks, rocks etc) in order to resist high winds. Or alternatively, the panels are mounted onto metal frames.



In the past I've written about solar panel clamping zones which determine where, on a solar panel's edge, you can place the clamps that attach the modules to their mounting rails. What I didn't do was go into just where on ???



A wall-mounted solar panel may be your best option, especially if you opt for a smaller panel like a 100W rigid solar panel. If you have a wall that receives significant direct sunlight during the day, wall mounting may be a good option and can augment a rooftop PV array. [How to Mount Solar Panels Yourself](#)

HOW HIGH CAN PHOTOVOLTAIC PANELS BE MOUNTED



Choosing materials for solar panel mounting. When choosing solar panel mounting materials, you can consider factors like: Weight: Weight is the primary consideration when mounting solar panels on the roof. Steel, aluminum, and stainless steel are the common construction materials, with aluminum being the lightest and is easily adjustable.



Solar panels should be mounted at a height of 3.75??? to 5.25??? from the roof's surface to ensure optimal performance. This measurement takes into account the seam of the SSMR, typically 1.5??? to 3??? in height, the mounting hardware, ???



Pole-mounted panels can stand up to just about anything that ground-mounted solar panels can with a good enough system. Ground-mounted solar system cost The cost of a ground-mounted solar system can vary widely ???



Multi-pole Solar Panel Mounts. Large Solar Generator Systems. Whether roof mount, ground mount, top of pole mount, side of pole mount, tower mount or custom solar panel mounting, we can accommodate your requirements. Call ???

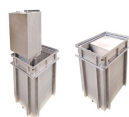


By optimizing panel placement and orientation, incorporating energy storage systems, and taking advantage of incentives and rebates, you can make the most of your solar panel roof mount system. It's crucial to work with an experienced installer who can guide you through the process and ensure that your system is designed and installed to maximize ???

HOW HIGH CAN PHOTOVOLTAIC PANELS BE MOUNTED



Solar panel size refers to the total amount of power a solar panel can generate over a period of time; Solar panel dimensions refers to the physical size of a solar panel; Solar panel sizes and wattage range from 250W to 450W, taking up 1.6 to 2 square metres per panel.



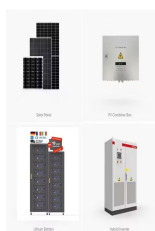
This means you have to buy a heat pump or high-retention storage heaters at the same time. Find out about energy suppliers' solar panel packages and how much solar panels cost. a small computer to the size of a washing machine. Greater capacity means a bigger and heavier battery. Small systems can be wall-mounted, while larger ones sit



Currently, there are two primary types of flexible solar panels available on the market. The first kind of flexible solar panel is a thin-film solar panel that contains photovoltaic material printed directly onto a flexible surface. The second type of flexible solar panel is made from crystalline silicon cells.



The size of a solar panel is measured in watts, which indicates the amount of power it can generate. The most common solar panel sizes for residential installations are between 250W and 400W, while larger commercial installations may use panels up to 500W or more. You can also opt for high-efficiency solar panels that have conversion rates



Ground-mounted solar panel installations are typically 15-20% more expensive than roof-mounted systems, because of the extra materials, labour, and groundwork required. According to Spirit Energy, a 10 kilowatt ???

HOW HIGH CAN PHOTOVOLTAIC PANELS BE MOUNTED



Whether you are having a domestic or a commercial solar panel installation, it is important to understand the factors involved in finding the ideal location for your panels to get the most out of your system. The direction and ???



South-facing panels give you the most bang for your buck because the sun crosses the sky in the south, giving the panels more sunlight. "We tell people that a solar panel costs the same amount regardless of what orientation it gets installed in," says Aaron Nitzkin, executive vice president of solar at Citadel Roofing and Solar in California (another ???