

# HOW IS RILIN ELECTRONICS PHOTOVOLTAIC PANEL



Photovoltaic Lamps: Lighting solutions powered by solar energy, ideal for areas without access to traditional electricity. Photovoltaic Modules: Solar panels that convert sunlight into electricity, used in residential, commercial, and industrial applications. Accessories



A photovoltaic cell is an electronic component that converts solar energy into electrical energy. This conversion is called the photovoltaic effect, which was discovered in 1839 by French physicist Edmond Becquerel<sup>1</sup>. It was not until the 1960s that photovoltaic cells found their first practical application in satellite technology. Solar panels, which are made up of PV a?|



Photovoltaic power generation is an important clean energy alternative to fossil fuels. To reduce CO<sub>2</sub> emissions, the Chinese government has ordered the construction of a large number of photovoltaic (PV) panels to generate power in the past two decades; many are located in desert areas because of the sufficient light conditions. Large-scale PV construction in desert a?|



The following Figure 5 [3] s ho ws a PV system wit h dc-dc modul e used to interface the PV panels. The PV modules consists of several solar cells which co nvert the energy of the sunlight d



A photovoltaic (PV) system is composed of one or more solar panels combined with an inverter and other electrical and mechanical hardware that use energy from the Sun to generate electricity. PV systems can vary greatly in size from small rooftop or portable systems to massive utility-scale generation plants. Although PV systems can operate by themselves as off-grid PV a?|

# HOW IS RILIN ELECTRONICS PHOTOVOLTAIC PANEL



Over 90% of the photovoltaic market uses silicon as a raw material to manufacture a solar panel. It is believed to be the 2nd most abundant element on the planet, after oxygen. The earth's crust



Nowadays, despite the significant potential of sunlight for supplying energy, solar power provides only a very small fraction (of about 0.5%) of the global energy demand. In order to increase the



Photovoltaic modules: a photovoltaic system captures the energy radiated by the sun thanks to the use of special components called photovoltaic modules that is able to produce electricity when hit by sunlight. Support structures of the modules: these structures support the modules by fixing them to the roof the case of flat roofing, support structures exist that can also modify the



Ningbo Rilin Electrical Co; Ltd is a high-tech corporation specialized in solar panel& module. Established in March 2008, Rilin is growing rapidly under the joint effort of the leaders and all a?|



One of the biggest causes of worldwide environmental pollution is conventional fossil fuel-based electricity generation. The need for cleaner and more sustainable energy sources to produce power is growing as a result of the quick depletion of fossil fuel supplies and their negative effects on the environment. Solar PV cells employ solar energy, an endless and a?|

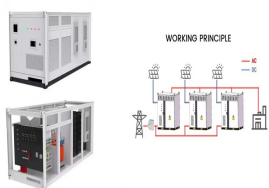
# HOW IS RILIN ELECTRONICS PHOTOVOLTAIC PANEL



Ningbo Rilin Electrical Co; Ltd is a high-tech corporation specialized in solar panel& module. Established in March 2008, Rilin is growing rapidly under the joint effort of the leaders and all members.



Explore how solar panels work with Bigwit Energy's in-depth blog. Understand the science behind photovoltaic cells, from silicon use to electricity generation and integration into the grid. Discover future solar innovations and real-world applications of this sustainable technology. Dive into the potential of solar energy with Bigwit Energy today.



The average global increase of PV power is in line with the needed trend to reach the levels envisioned in the SDS, which will require a mean annual growth of 15% between 2019 and 2030 [1] addition, PV is also a key technology in the development of distributed generation and smart grids, thanks to its modularity and easy adaptability on buildings and a?]



However, results pertaining to the impact of water droplets on the PV panel had an inverse effect, decreasing the temperature of the PV panel, which led to an increase in the potential difference and improved the power output by at least 5.6%. Moreover, dust accumulation reduced the power output by 8.80% and the efficiency by 11.86%, while



A fuzzy logic controller was employed to determine the suitable time to track the sun. Sunlight voltage and solar cell current were used as inputs to the fuzzy logic system, and the output was the motor motion. The fuzzy controller employed the produced current in the solar panel to determine the suitable time to move the solar panel by the motor.

# HOW IS RILIN ELECTRONICS PHOTOVOLTAIC PANEL



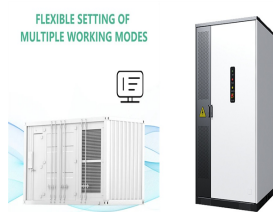
Photovoltaic is one of the popular technologies of renewable DG units, especially in the MGs. The photovoltaic panel is a solar system that utilizes solar cells or solar photovoltaic arrays to turn directly the solar irradiance into electrical power. In other words, photons of light are absorbed in photovoltaic arrays and thus electrons are released in the panel.



Since photovoltaics are adversely affected by shade, any shadow can significantly reduce the power output of a solar panel. The performance of a solar panel will vary, but in most cases, guaranteed power output life expectancy is between 10 years and 25 years. Solar panel power output is measured in watts.



Key learnings: Solar Cell Definition: A solar cell (also known as a photovoltaic cell) is an electrical device that transforms light energy directly into electrical energy using the photovoltaic effect.; Working Principle: The working of solar cells involves light photons creating electron-hole pairs at the p-n junction, generating a voltage capable of driving a current across a?



S. Buso, G. Spiazzi - Power Electronics in Photovoltaic Applications - CERN, January 2010 26 Dual-Stage Configurations The DC-DC stage controls the PV string so as to operate at the MPP and works under a constant output voltage  $V_{DC}$  The DC-AC inverter injects a sinusoidal current into the grid at a



What is photovoltaic (PV) technology and how does it work? PV materials and devices convert sunlight into electrical energy. A single PV device is known as a cell. An individual PV cell is usually small, typically producing about 1 or 2 watts of power. These cells are made of different semiconductor materials and are often less than the thickness of four human hairs.

# HOW IS RILIN ELECTRONICS PHOTOVOLTAIC PANEL



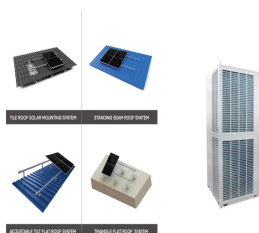
Photovoltaic (PV) systems are increasingly becoming a vital source of renewable energy due to their clean and sustainable nature. However, the power output of PV systems is highly dependent on environmental factors such as solar irradiance, temperature, shading, and aging. To optimize the energy harvest from PV modules, Maximum Power Point a?|



In Japan, solar panel waste recycling is under the control of the Japanese environment ministry and solar panel manufacturers participate with local companies in research on recycling technology that relates to recycling technology in Europe [13]. Moreover, the European PV organization and Shell Oil Company (Japan) have entered into an association.



The first approach to build the performance of a photovoltaic solar panel is to use a maximum power point tracker in rapidly changing climatic conditions and use a DC-DC converter to maximize the



The settings of the PV panel in the experiment, including the specific height and angle of panel, was according to the typical PV panel installations in Northern China (also similar to some installations in other arid and semi-arid regions), but this may be not representative of some modern PV panel setups which allow the panels to dynamically track the sun.



Solar panels are generally quite reliable. Many owners don't experience technical faults in over a decade of ownership. Nearly seven in 10 owners had had no problems with their solar panels in our survey of over 2,000 owners.\* The most common a?? and most serious a?? problem owners face is with the

# HOW IS RILIN ELECTRONICS PHOTOVOLTAIC PANEL



PV panels vary in size and in the amount of electricity they can produce. Electricity-generating capacity for PV panels increases with the number of cells in the panel or in the surface area of the panel. PV panels can be connected in groups to form a PV array. A PV array can be composed of as few as two PV panels to hundreds of PV panels. The



Solar array mounted on a rooftop. A solar panel is a device that converts sunlight into electricity by using photovoltaic (PV) cells. PV cells are made of materials that produce excited electrons when exposed to light. The electrons flow through a circuit and produce direct current (DC) electricity, which can be used to power various devices or be stored in batteries.



(Telecommunication Computing Electronics and Control), 20 (1), pp:166-172 In January, the solar panel tested the effect of solar radiation, shading, and tilt angle on the output power and its