

HOW LITHIUM BATTERY EXITS ENERGY STORAGE MODE



What is storage mode on Shure rechargeable lithium-ion batteries? Shure Rechargeable Lithium-Ion Batteries. One such feature is the Storage mode option (see section 4 for more details). As SOC can affect the loss of Recovery Capacity, Shure added the Storage mode



What is a lithium-ion battery? The lithium-ion battery, which is used as a promising component of BESS that are intended to store and release energy, has a high energy density and a long energy cycle life.



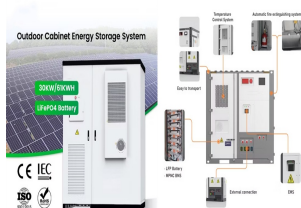
How does a lithium-ion battery pack work? However, a battery pack with such a design typically encounters charge imbalance among its cells, which restricts the charging and discharging process. Positively, a lithium-ion pack can be outfitted with a battery management system (BMS) that supervises the batteries' smooth work and optimizes their operation.



How can lithium-ion batteries improve battery performance? The expanding use of lithium-ion batteries in electric vehicles and other industries has accelerated the need for new efficient charging strategies to enhance the speed and reliability of the charging process without decaying battery performance indices.



How do lithium ion batteries work? Li-ion batteries typically use ether (a class of organic compounds) as an electrolyte. Lithium ions are stored within graphite anodes through a mechanism known as intercalation, in which the ions are physically inserted between the 2D layers of graphene that make up bulk graphite.



Parts of a lithium-ion battery ((C) 2019 Let's Talk Science based on an image by ser_igor via iStockphoto).. Just like alkaline dry cell batteries, such as the ones used in clocks and TV remote controls, lithium-ion batteries provide power through the movement of ions. Lithium is extremely reactive in its elemental form. That's why lithium-ion batteries don't use elemental ???

HOW LITHIUM BATTERY EXITS ENERGY STORAGE MODE



These so-called accelerated charging modes are based on the CCCV charging mode newly added a high-current CC or constant power charging process, so as to achieve the purpose of reducing the charging time Research has shown that the accelerated charging mode can effectively improve the charging efficiency of lithium-ion batteries, and at the



This rechargeable battery uses lithium ions to pump out energy. No wonder they're often called the MVPs of energy storage. Take regular batteries, for example, which can store around 100-200 watt-hours per kilogram (Wh/kg) of energy. But lithium ones? They can pack a massive 250-670 Wh/kg. Impressive, huh?



It is a chemical process that releases large amounts of energy. Thermal runaway is strongly associated with exothermic chemical reactions. If the process cannot be adequately cooled, an escalation in temperature will occur fueling the reaction. Lithium-ion batteries are electro-chemical energy storage devices with a relatively high energy density.



Electrical energy storage for transportation???approaching the limits of, and going beyond, lithium-ion batteries . The escalating and unpredictable cost of oil, the concentration of major oil resources in the hands of a few politically sensitive nations, and the long-term impact of CO2 emissions on global climate constitute a major challenge for the 21st century.



Flexible, manageable, and more efficient energy storage solutions have increased the demand for electric vehicles. A powerful battery pack would power the driving motor of electric vehicles. The battery power density, longevity, adaptable electrochemical behavior, and temperature tolerance must be understood. Battery management systems are essential in ???

HOW LITHIUM BATTERY EXITS ENERGY STORAGE MODE



Batteries are energy storage devices, as such, they can be thought of them as you would an From the moment a lithium-ion battery exits the production line it starts to age. most likely to be seen given an average of the voltage curve of a particular battery. The Storage mode Charge Voltage is chosen based on what is roughly a mid-point



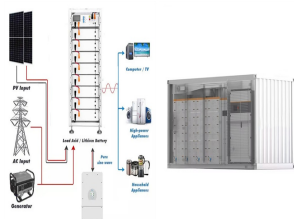
A lithium-ion or Li-ion battery is a type of rechargeable battery that uses the reversible intercalation of Li + ions into electronically conducting solids to store energy. In comparison with other commercial rechargeable batteries, Li-ion batteries are characterized by higher specific energy, higher energy density, higher energy efficiency, a longer cycle life, and a longer ???



Lithium-ion batteries are pivotal in powering modern devices, utilizing lithium ions moving across electrodes to store energy efficiently. They are preferred for their long-lasting charge and minimal maintenance, though they must be managed carefully due to potential safety and environmental challenges.



Large lead-acid batteries are used around the country and world in cars and as stationary storage systems, and only over the past decade or so has the deployment of lithium-ion batteries accelerated. Lithium-ion technologies are the fastest-growing segment of energy storage options available, a trend many analysts expect to continue for many years.



The applications of lithium-ion batteries (LIBs) have been widespread including electric vehicles (EVs) and hybridelectric vehicles (HEVs) because of their lucrative characteristics such as high energy density, long cycle life, environmental friendliness, high power density, low self-discharge, and the absence of memory effect [[1], [2], [3]] addition, other features like ???

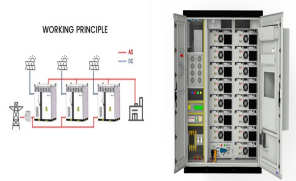
HOW LITHIUM BATTERY EXITS ENERGY STORAGE MODE



-L Wall Mounted 48V IP65 Lithium Battery 208Ah 10.65Kwh LifePo4 LFP Solar Battery Pack Energy Storage System. Communication mode: Seplos 48V 210Ah 10Kwh Sodium Ion Battery Pack Energy Storage SIB Batteries For Household Off Grid Systems. Room 102, Building one, No. 147, Qingfeng Road, Qingxi Town, Dongguan, Guangdong Province



fully charged. The state of charge influences a battery's ability to provide energy or ancillary services to the grid at any given time. ??? Round-trip efficiency, measured as a percentage, is a ratio of the energy charged to the battery to the energy discharged from the battery. It can represent the total DC-DC or AC-AC efficiency of



Unlike traditional power plants, renewable energy from solar panels or wind turbines needs storage solutions, such as BESSs to become reliable energy sources and provide power on demand [1]. The lithium-ion battery, which is used as a promising component of BESS [2] that are intended to store and release energy, has a high energy density and a long energy ???



It also has been used for energy storage in hybrid electric vehicle fields. As lithium-ion batteries discharge during use, it's important for users to understand the battery SOE (state of energy) ??? or how much charge is remaining. Devices powered by a low-energy lithium-ion battery may experience reduced performance. For example



CleanTechnica has spilled plenty of ink on solid-state EV battery technology, which represents the next step up from conventional lithium-ion batteries for mobile energy storage (see more solid

HOW LITHIUM BATTERY EXITS ENERGY STORAGE MODE



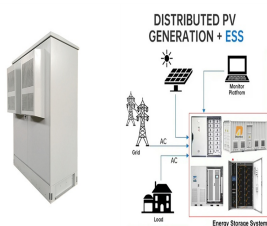
2.2 Energy Storage Battery (LiFePO4 VS Lead-Acid Battery) The battery is recommended to use lithium batteries. Lithium batteries are made of lithium metal or lithium alloy as the negative electrode material and use non-aqueous electrolyte solutions. They have many advantages such as high energy, long service life, and light weight.



FAQ about lithium battery storage. For lithium-ion batteries, studies have shown that it is possible to lose 3 to 5 percent of charge per month, and that self-discharge is temperature and battery performance and its design dependent. In general, self-discharge is ???



How lithium-ion batteries work. Like any other battery, a rechargeable lithium-ion battery is made of one or more power-generating compartments called cells. Each cell has essentially three components: a positive electrode (connected to the battery's positive or + terminal), a negative electrode (connected to the negative or ??? terminal), and a chemical ???



Lithium batteries are becoming increasingly important in the electrical energy storage industry as a result of their high specific energy and energy density. The literature provides a comprehensive summary of the major advancements and key constraints of Li-ion ???

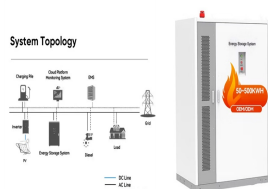


Lithium Iron Phosphate (LFP) and Lithium Nickel Manganese Cobalt Oxide (NMC) are the leading lithium-ion battery chemistries for energy storage applications (80% market share). Compact and lightweight, these batteries boast high capacity and energy density, require minimal maintenance, and offer extended lifespans.

HOW LITHIUM BATTERY EXITS ENERGY STORAGE MODE



Paper studies the charging strategies for the lithium-ion battery using a power loss model with optimization algorithms to find an optimal current profile that reduces battery energy losses and, consequently, maximizes the ???



1 INTRODUCTION. Renewable and clean energy sources are necessary to assist in developing sustainable power that supplies plenty of possible innovative technologies, such as electric vehicles (EVs), solar and wind power systems [1, 2]. They must reduce our current reliance on some limited sources of energy such as fossil fuel and uranium to alleviate worries ???



A battery energy storage system (BESS) captures energy from renewable and non-renewable sources and stores it in rechargeable batteries (storage devices) for later use. A battery is a Direct Current (DC) device and when needed, the electrochemical energy is discharged from the battery to meet electrical demand to reduce any imbalance between