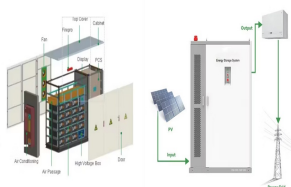
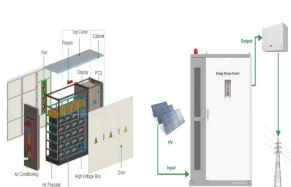


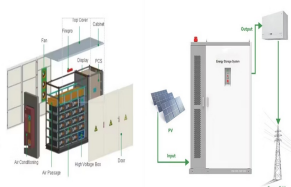
HOW MANY AMPERES ARE THERE IN A PHOTOVOLTAIC PANEL



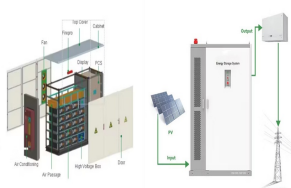
How many amps does a solar panel produce? This translates to each of my solar panels, after accounting for a 14% system loss and operating at an adjusted power output of 258W, producing an average daily current of 7.17 amperes. How Many Amps Does a 100-Watt Solar Panel Produce? A 100W solar panel produces about 3.5 amps under ideal conditions. How Many Amps Can a 200W Solar Panel Produce?



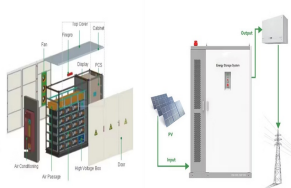
How many amps does a 100W solar panel produce? In this guide you will learn how to do these calculations quickly. A 100W solar panel generates about 5.5 amps, a 200W solar panel 11.1 amps and 2 x 150W solar panels 16.6 amps. Divide your solar panel's VMPP by its rated watt output and you get the amps. A 100W 12V solar panel with an 18V VMPP can produce up to 5.5 amps ($100 / 18 = 5.5$).



How many amps does a 200 watt solar panel produce? 200-watt solar panel will produce 8.85 amps under standard test conditions (STC). How do I calculate solar panel amps? To calculate the amps from watts use this formula. 100-watt solar panel will store 8.3 amps in a 12v battery per hour. 300-watt solar panel will store 25 amps in a 12v battery per hour.

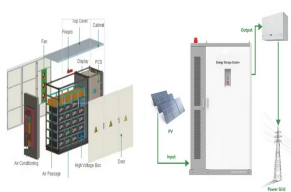


How many amps does a 12V solar panel use? So if you have 2 x 100W 12V solar panels with an 18V VMPP connected in parallel, the amp output is up to 11.1 amps. If you have a 24V 330W solar panel its amp output is around 9.16 amps. Just like with their 12V counterparts, these are estimates based on ideal conditions.

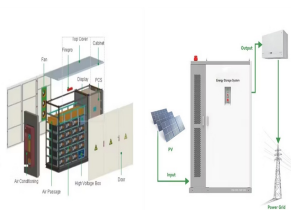


How important are Watts & amps when sizing a solar panel? Both are important. Amps determine how many watts a solar panel produces. That said, when it comes to sizing solar panels, watts is a more useful measure. That's because it tells you how much power the solar panel produces and how quickly it can charge a battery.

HOW MANY AMPERES ARE THERE IN A PHOTOVOLTAIC PANEL



How many amps does a 500 watt solar panel produce? A 500-watt solar panel will produce 3.25 amperes of AC current in the US with 120 volts or 1.7 amps in places with 230 volts AC grid (like Europe). It will supply your 12-volt battery bank with 36.67 amps, 18.3 amps for the 24-volt battery bank, 12.2 amps for the 36-volt battery bank, and 9.16 amps for the 48-volt battery bank.



300-watt Solar Panel How Many Amps and volts? 12v 300 watt solar panel will produce about 16.2 amps and 18.5 volts under ideal conditions (STC). That is why you need a 30A charge controller with 300 watt solar panel, which will regulate the voltage output of the solar panel to safely charge a 12 or 24-volt battery.



As we can see, those 60-cell, 72-cell, and 96-cell solar panel dimensions are a bit theoretical. These are the practical solar panel dimensions by wattage from solar panels that are actually sold on the market (made by SunPower, Panasonic, QCells, REC Solar, Renogy, Bluetti, and so on).. Note: You can allow for up to a 5% difference in both length and width due to different solar a?]



A typical 250w solar panel will receive around 4 to 5 hours of sun each day. By using solar panels, you will be on the fast track to generating renewable energy for your home. How many amps should my 250w solar panel put out? The average-sized 100-watt solar panel produces roughly 5-amps.



We know that power is 100 watts (P) and that we have a 12-volt circuit (V). We just plug these two figures in the equation and we get how many does 100-watt solar panel produce: $100\text{-watt panel amps} = 100\text{W} / 12\text{V} = 8.33\text{ amps}$. There you have it; a 100-watt solar panel produces 8.33 amps. But that's only at ideal conditions for a solar panel (77

HOW MANY AMPERES ARE THERE IN A PHOTOVOLTAIC PANEL



For example, a 250-to 400-watt solar panel could produce around 14-24 amps in ideal conditions. Conserving these amps in the form of a solar battery can increase the ability of your system to control and create an energy reserve a?|



Now you can just read the solar panel daily kWh production off this chart. Here are some examples of individual solar panels: A 300-watt solar panel will produce anywhere from 0.90 to 1.35 kWh per day (at 4-6 peak sun hours locations).; A 400-watt solar panel will produce anywhere from 1.20 to 1.80 kWh per day (at 4-6 peak sun hours locations).; The biggest 700 a?|



In order to calculate the amps produced by a 100-watt solar panel, you will have to divide the watts of power by the maximum power voltage (V_{mp}) of the solar panel. Final Thoughts Although there is an estimated amount of amps that should be produced by 100-watt solar panels, it's very difficult to say for sure what your actual output will be, and it may differ a?|



If you know the number of PV cells in a solar panel, you can, by using 0.58V per PV cell voltage, calculate the total solar panel output voltage for a 36-cell panel, for example. You only need to sum up all the voltages of the individual photovoltaic cells (since they are wired in series, instead of wires in parallel).



On the other hand, there is another form of 200-watt solar panel on the market, leading me to bring up the 18-volt solar panel which can produce approximately 11 amps of energy. We hope you found the information useful and have now a clearer idea of how many amps does a 200-watt solar panel produce and what are the factors that define the

HOW MANY AMPERES ARE THERE IN A PHOTOVOLTAIC PANEL



If you have a 100W solar panel with a maximum power voltage of 18.6V, the solar panel's max amps will be $100/18.6$, which is 5.3 amps. In real life, however, the amps produced by the solar panel will be slightly lower. What is more important, watts or amps? Both are important. Amps determine how many watts a solar panel produces.



watt solar panel amp output. To calculate the amp output of a 170W solar panel, divide voltage by watts. A 36 cell, 170W solar panel can generate up to 18 volts, the calculation looks like this: $170 / 18 = 9.4$. Under ideal conditions, the solar panel can generate up to 9.4 amps. If your solar panel has 60 cells, its voltage can reach



What size solar panel do I need? Solar Panels power generation is commonly given in Watts e.g. 120 Watts. To calculate the energy it can supply the battery with, divide the Watts by the Voltage of the Solar Panel. $120 \text{ Watts} / 18\text{v} = 6.6 \text{ Amps}$ Please note that Solar Panels are not 12v, I repeat Solar Panels are not 12v.



One aspect of designing a solar PV system that is often confusing, is calculating how many solar panels you can connect in series per string. This is referred to as string size. If you are unfamiliar with the terms "series" and "string", it could be a?



How Many Amps Are Produced By a 100-Watt Solar Panel? Amps, on the other hand, are a measure of current flow. The amount of amps produced by a 100-watt solar panel depends on various factors such as temperature and shading.

HOW MANY AMPERES ARE THERE IN A PHOTOVOLTAIC PANEL



How to Use This Calculator. 1. Find the technical specifications label on the back of your solar panel. Note: If your panel doesn't have a label, you can usually find its technical specs in its product manual or on its online product page. There should be a label on the back of your solar panel that lists its key technical specs.



Do 100-Watt Solar Panels Require Charge Controller? If a 100-Watt solar panel is used to power a battery, a solar charge controller is necessary. Some small solar systems include only a single 100-watt panel and a battery. These systems need solar charge controllers to regulate the current entering the battery.



How Many Amps Does a 100 Watt Solar Panel Produce. It can ideally generate 100 watts (5.5 to 8.33 amps) of direct current (DC) power and a maximum voltage output of approximately 18V to 12V under optimal a?|



The calculated amps from watts and voltage are 10 to 12 amps per hour for a 200-watt solar panel. The assumed sunlight per day for this calculation is 6 hours. A digital multimeter is used to directly measure the amps.



When the positive and negative terminals of a solar panel are connected, a current called short circuit current (I_{sc}) is produced. I_{sc} is used to calculate how many amps a solar panel can safely take when connected to a load. It displays the maximum current that a solar panel can produce without harming the panel itself 5. For example, in CS3L

HOW MANY AMPERES ARE THERE IN A PHOTOVOLTAIC PANEL



Understanding Solar Panel Current. The best way to calculate the amps produced by a solar panel is by using a digital multimeter. Begin by connecting the positive and negative probes of the multimeter to the positive a?|



Now, the house has a gable roof, and one side of it is usually in the shade, so a solar panel power output there would be close to zero. It's better to exclude this bit completely. If the total roof area was 1750 ft², halving it means that we have approximately 875 ft² a?|



Solar Panel Fuse Calculator is a useful tool that helps determine the correct fuse size required for a power system. with each panel having an Isc rating of 8.2 amps. Now, according to the solar panel fuse calculator, the total fuse capacity needed would be $(8.2 \times 1.56) = 12.79$ amps. what size fuse should go there on the line



A 100W solar panel can produce 8 amps per hour and up to 40 amps a day. A 12V 100W solar panel has a maximum power capacity of 18 volts but variable weather conditions can affect the final output. A 24V 100W solar panel produces 4.1 amps an hour. How to Calculate 100W Solar Panel Amp Output. The formula is watts / volts = amps. A typical solar



A 200W solar panel produces 8-10 amps per hour (on average) if the solar panel is a 20V-24V, 200W solar panel system. You can calculate the amp output of your solar panel with this formula: Watt Rating / Volts = Amps. This article will help you estimate the number of amps that a particular solar panel can produce when under full-sun conditions.

HOW MANY AMPERES ARE THERE IN A PHOTOVOLTAIC PANEL



How Much Power Does A 10 Watt Solar Panel Produce? A 10 watt solar panel typically produces about 3 amps on a good day. If your 12V device uses more than 3 amps in a day, you may want to consider going with a larger panel. 10 watts at 14.4 charging volts is only 0.7 amps, so it would take quite a few hours of sunlight to charge a large battery.



200 Watt Solar Panel How Many Amps. In addition, there are many types of solar panels designed specifically for camping and RVs. Can be mentioned as solar panels for vans, flexible solar panels, and foldable solar panels. To determine if a 200 W solar panel is suitable for you, you must understand the alternatives and how much power 200W



Most home solar panels that installers offer in 2024 produce between 350 and 450 watts of power, based on thousands of quotes from the EnergySage Marketplace. Each of these panels can produce enough power to run appliances like your TV, microwave, and lights. To power an entire home, most solar panel owners need 17 to 30 solar panels.. The amount of a?|



For example, a 200-watt solar panel operating at 12 volts can produce approximately 16-17 amps ($200 \text{ watts} / 12 \text{ volts} = 16.67 \text{ amps}$). This calculation showcases the direct relationship between wattage, voltage, and a?|



Use our solar panel size calculator to find out the ideal solar panel size to charge your lead acid or lithium battery of any capacity and voltage. For example, 50ah, 100ah, 200ah, 120ah. There are no devices drawing a?|